



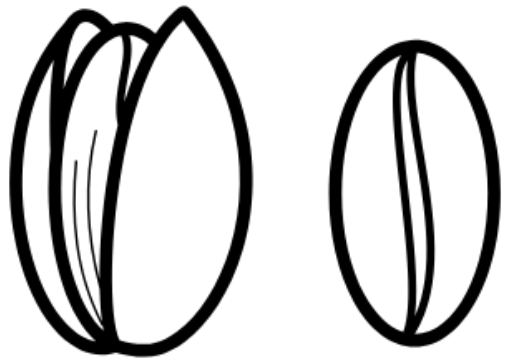
Mapping Vermont's Impervious Surfaces

Jarlath O'Neil-Dunne
University of Vermont





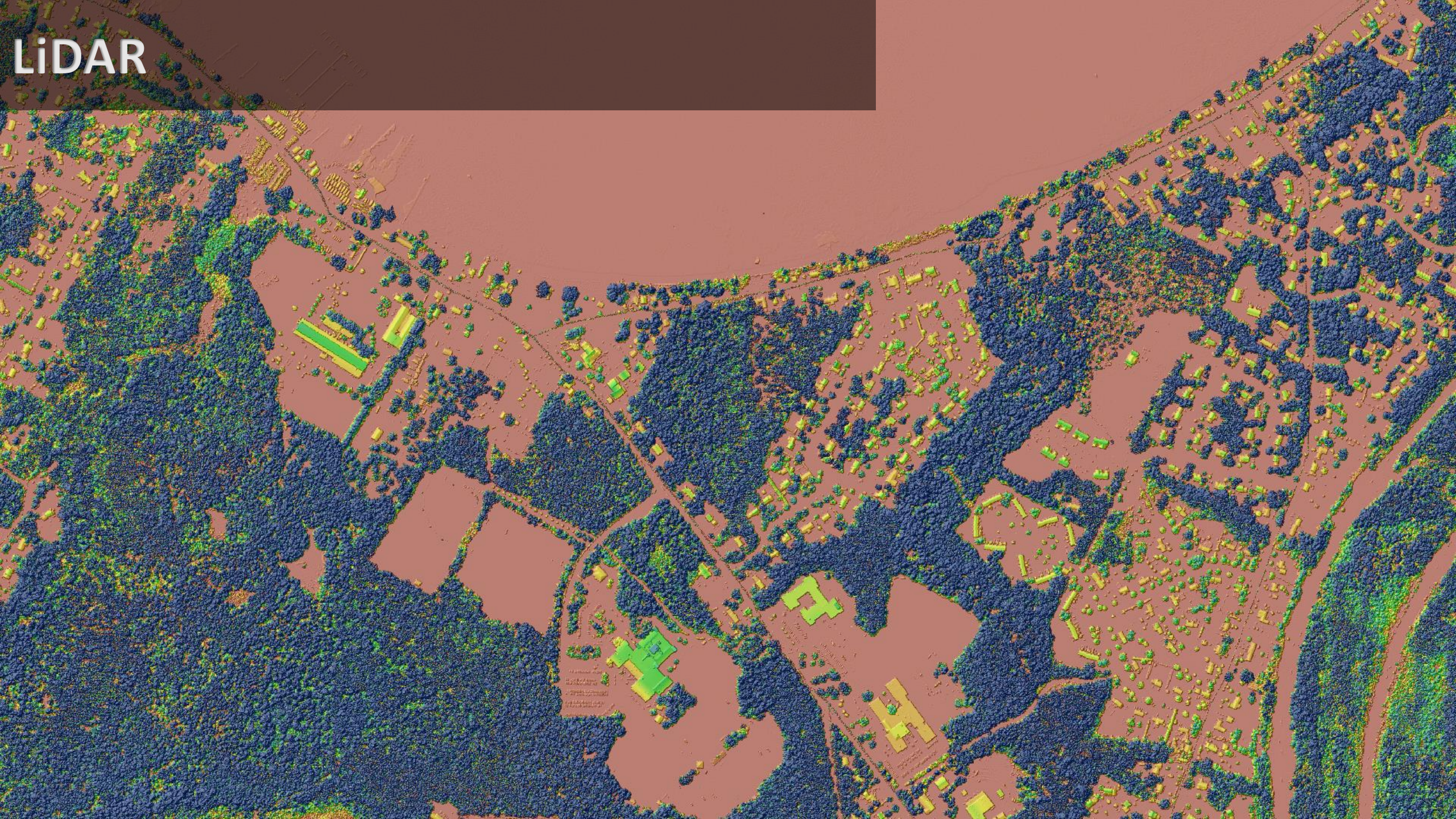




This Project in
a Nutshell

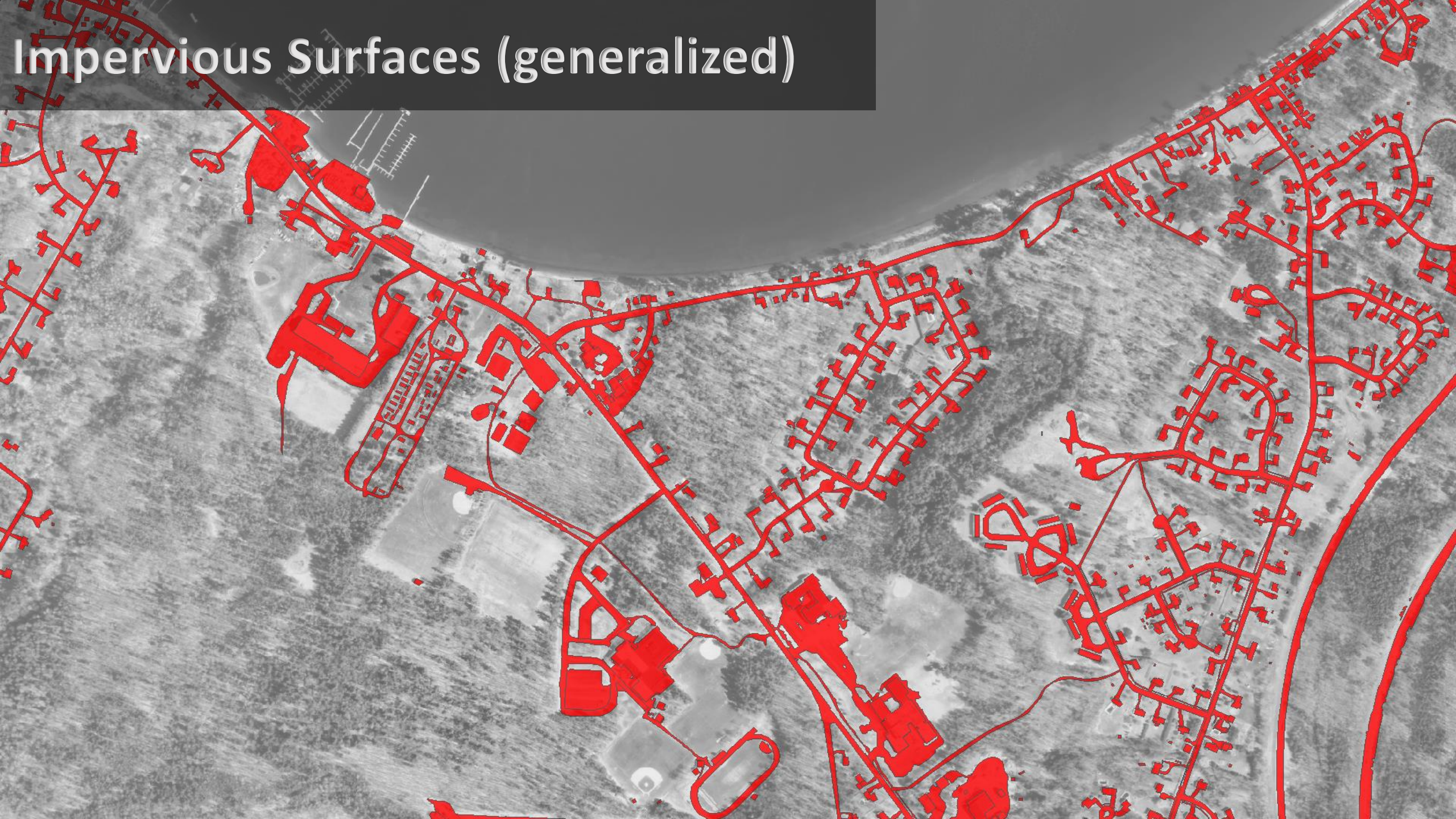


Imagery



LiDAR

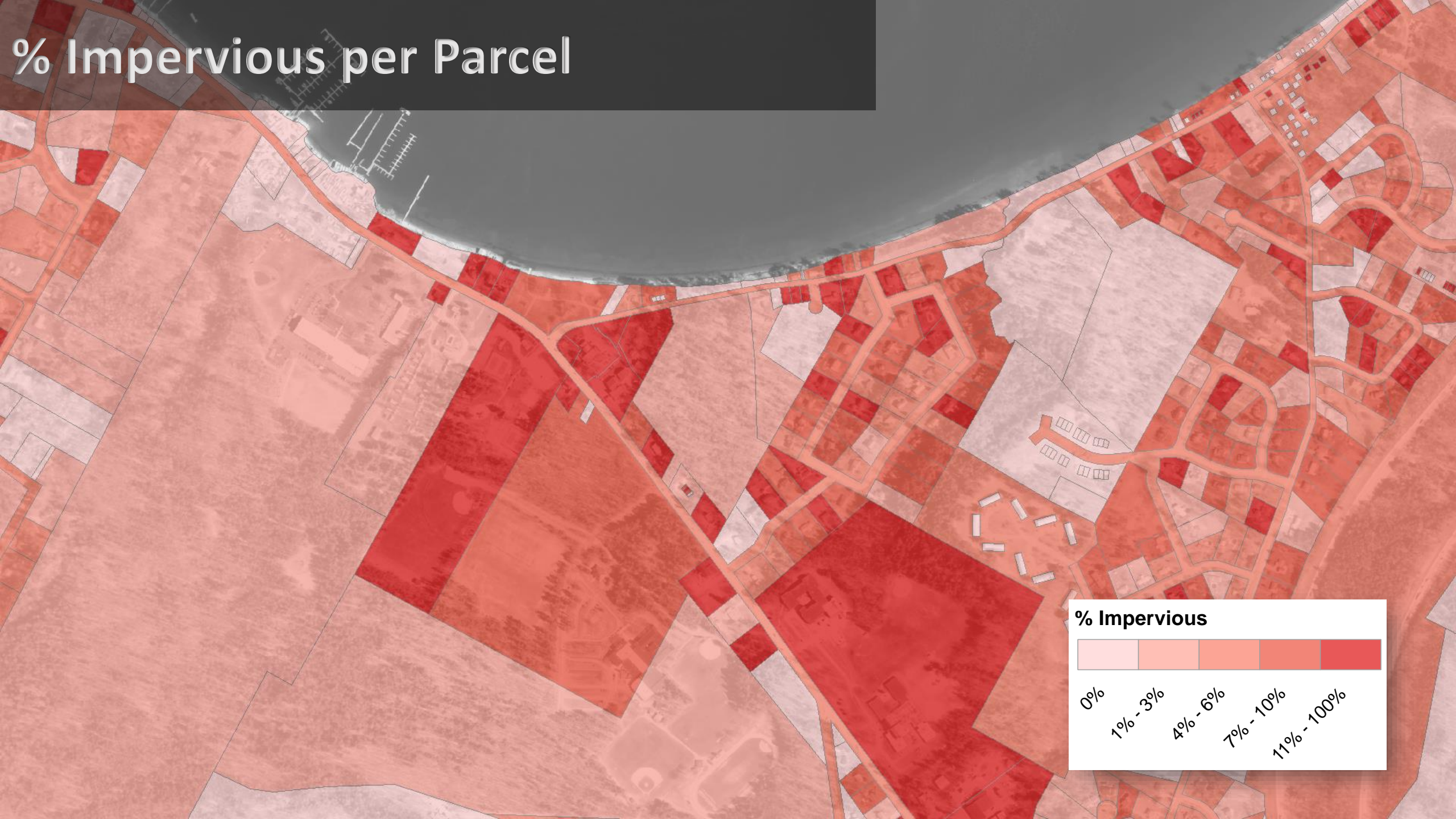
Impervious Surfaces (generalized)





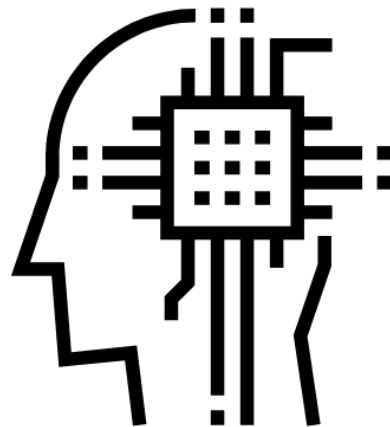
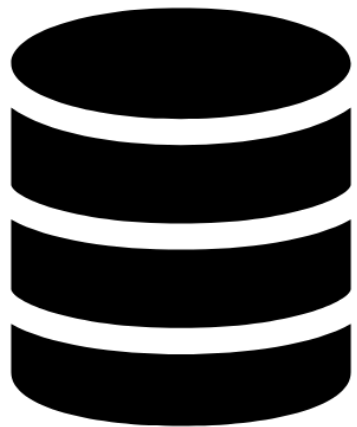
Parcels

% Impervious per Parcel



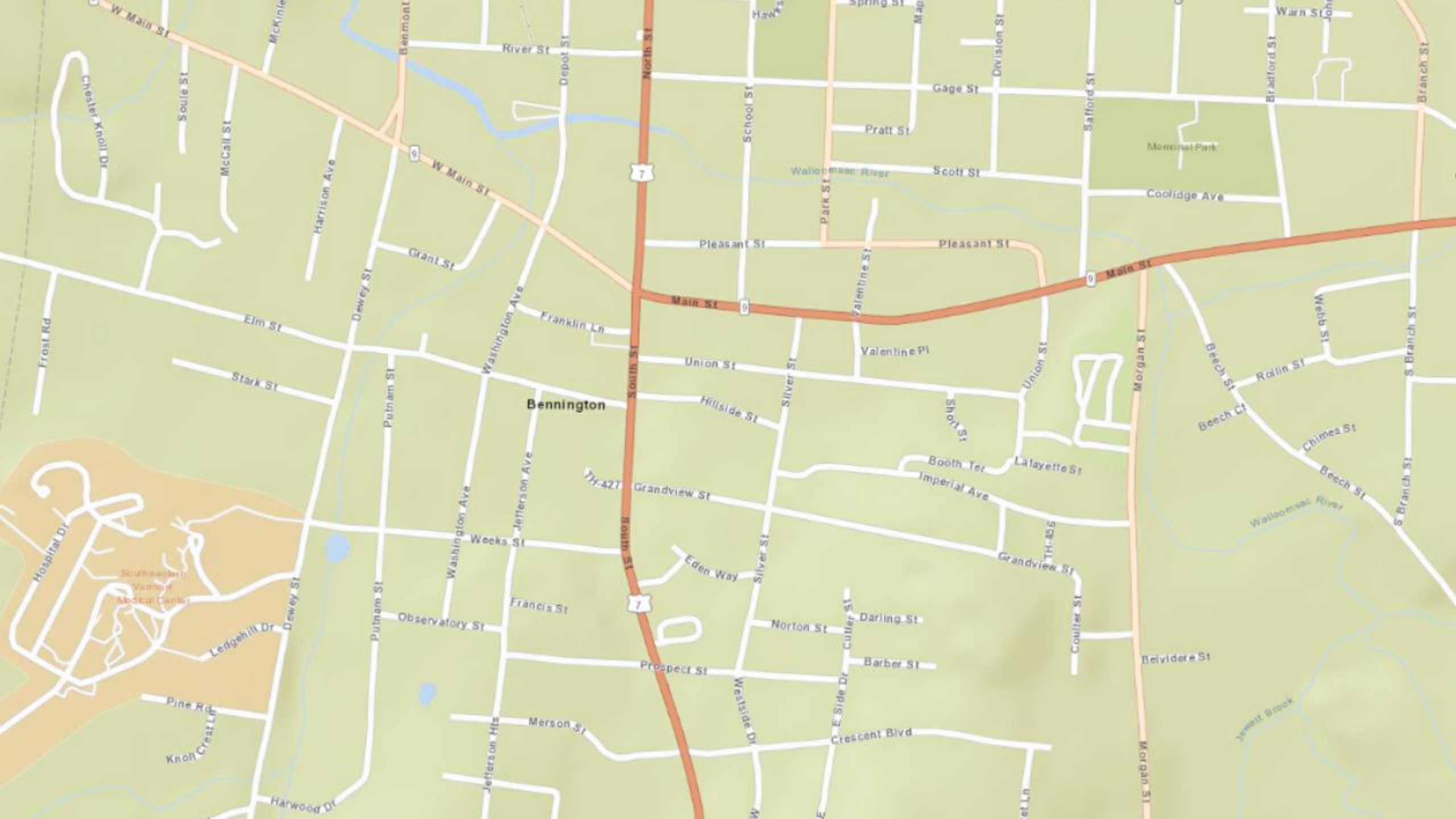
2016

0.5 meters



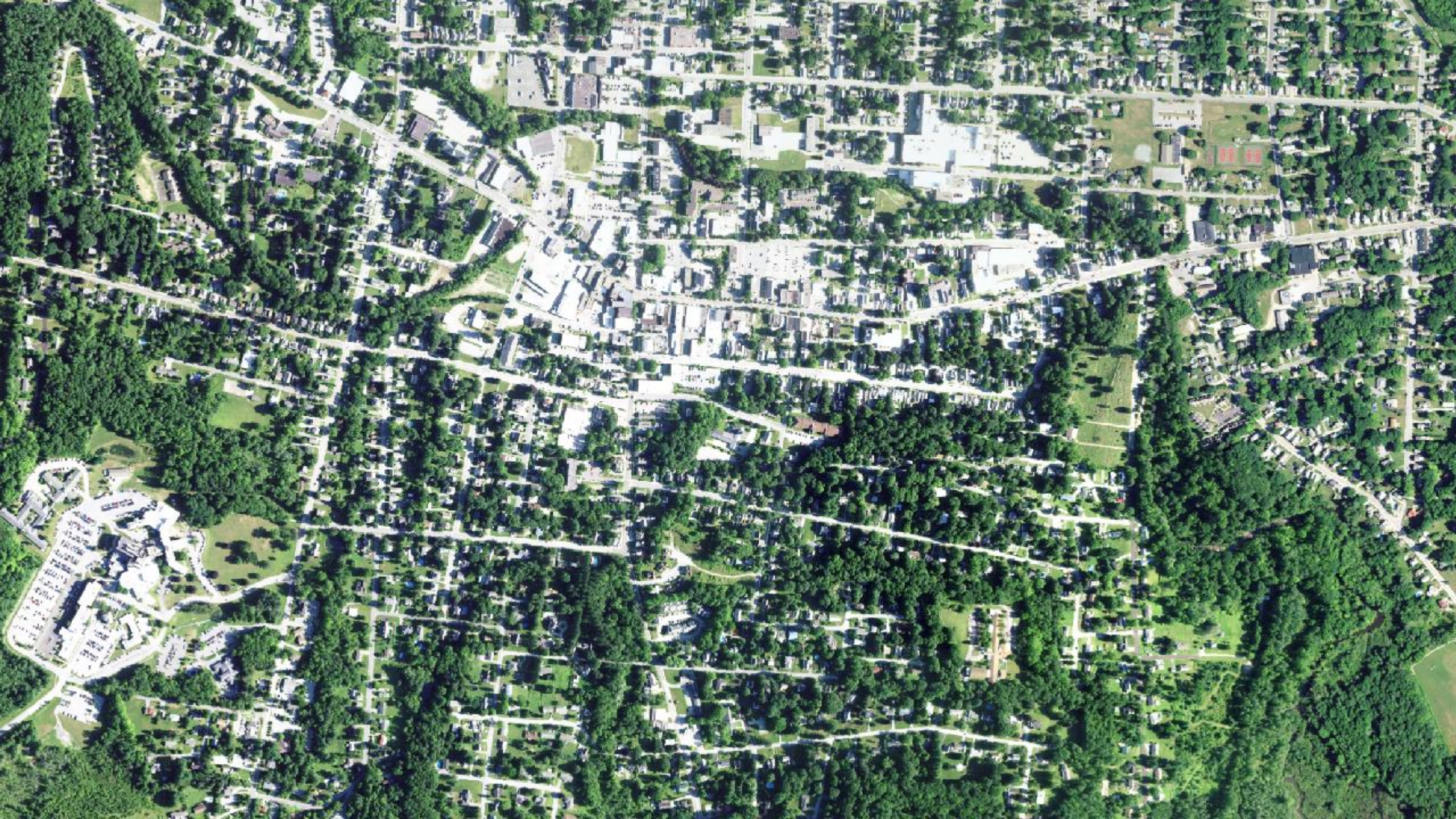


Sample
Output



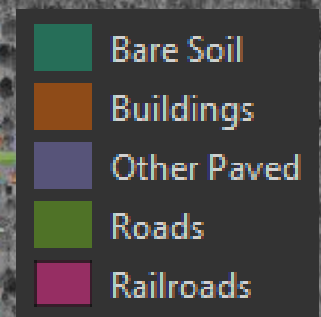






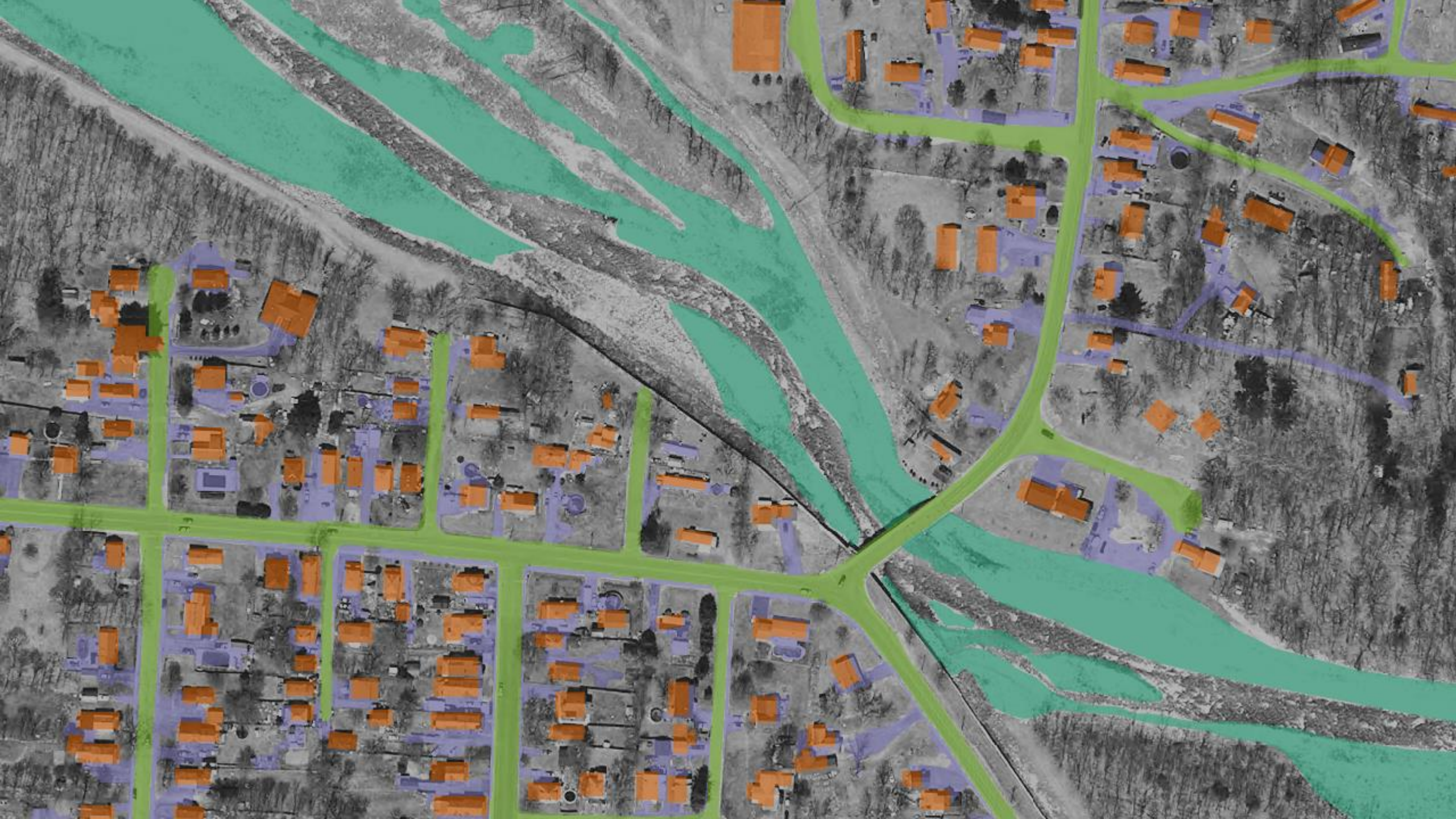






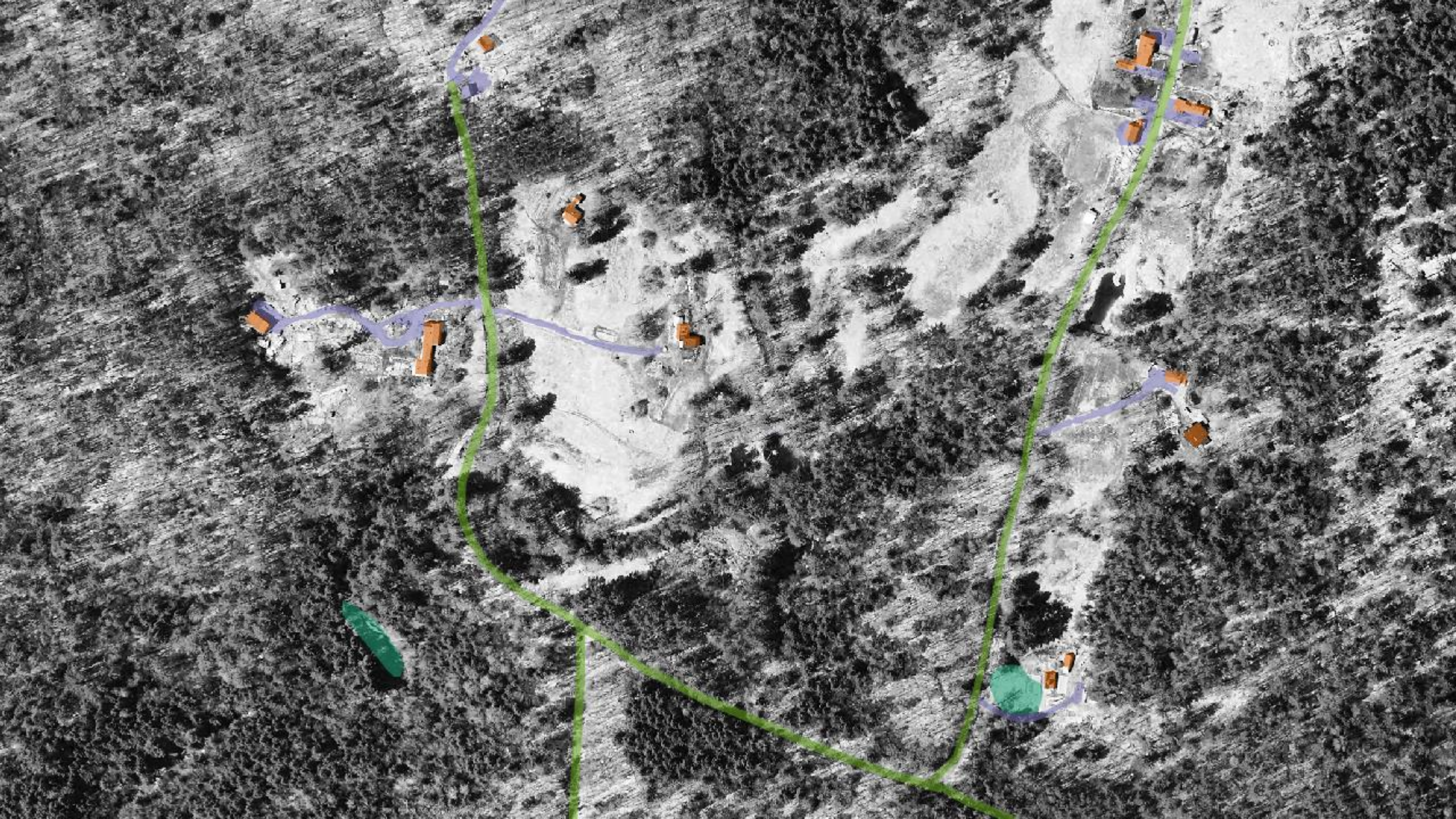














Project Status



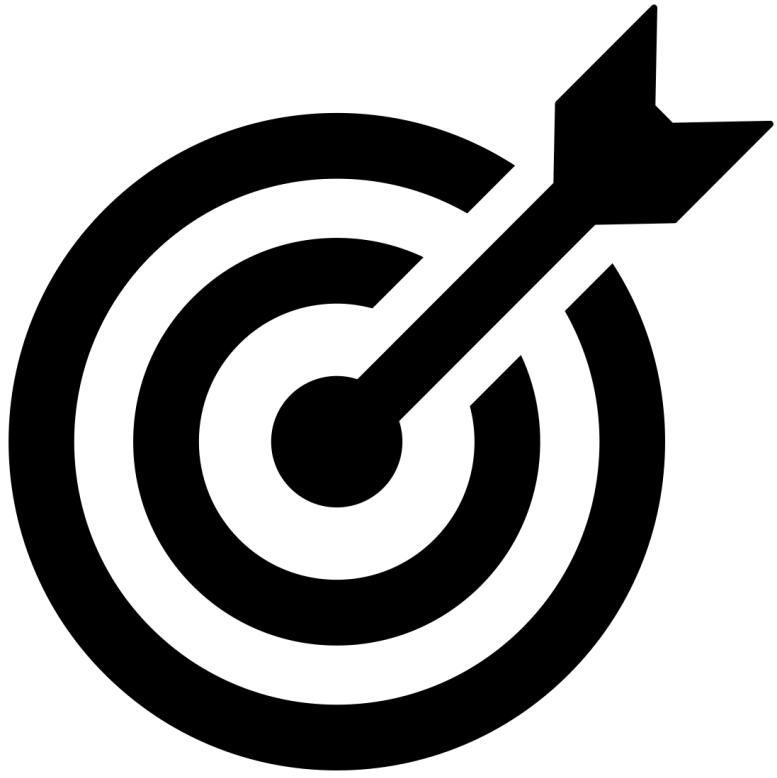
Initial Map



Review Period



Final Map



How accurate
is the
mapping?



How do we update
the product?





How much
will it cost?

\$40k



Analytics

