

From: Hill, Matt [Matt.Hill@state.vt.us]

Sent: Wednesday, May 27, 2015 10:25 AM

Subject: VT Department of Labor April 2015 Unemployment and Jobs Press Release

Attachments: vt_ur_Apr_2015_final.pdf



For Immediate Release
May 27, 2015

Contact: Mathew Barewicz, (802) 828-4153
 Mathew.Barewicz@state.vt.us

Vermont Unemployment Rate Decreases to 3.6 percent in April

The Vermont Department of Labor announced today that the seasonally-adjusted statewide unemployment rate for April was 3.6 percent. This represents a decrease of two-tenths of a percentage point from the revised March rate (3.8 percent). The national average in April was 5.4 percent, which experienced a decrease of one-tenth of a percentage point from the previous month's estimate. As of the prior month's initial data, Vermont's unemployment rate was tied for sixth lowest in the country. April represents the seventh consecutive month without an increase to the unemployment rate.

Commissioner's Message

"Like the national economy, the Vermont economy is reporting continued overall economic improvement. With a declining number of unemployed Vermonters and Vermont businesses reporting record high employment levels, the Vermont economy continues to improve. Over the year, the private sector in Vermont is reporting an employment growth rate of 2.5 percent. This rate of growth is above Vermont's current population growth. The tightening of the available labor market creates opportunities for advancement for Vermonters at all skill levels. If you are looking for a job, to switch fields or advance your career, visit a job counselor at your local Vermont Department of Labor office", said Annie Noonan, Commissioner of Labor.

Chart 1. Unemployment Rate, seasonally adjusted

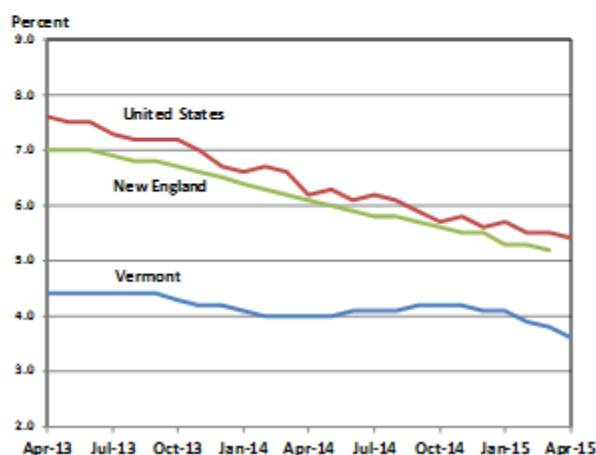
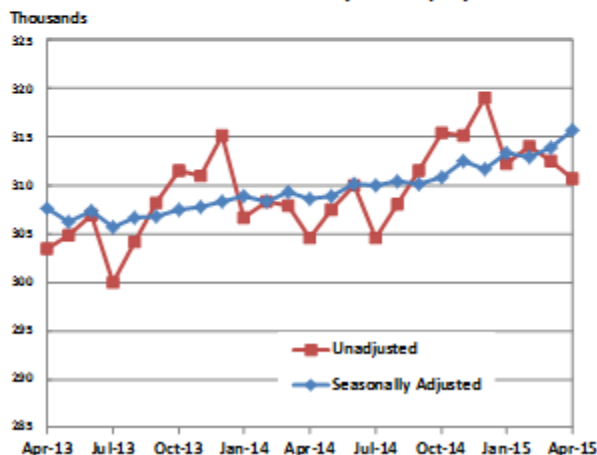


Chart 2. Vermont Nonfarm Payroll Employment



State of Vermont Overview

The Vermont seasonally adjusted unemployment rate decreased by two-tenths of a percentage point in April to a statewide average of 3.6 percent. The comparable rate for the United States (5.4 percent) decreased one-tenth of a percentage point from the revised March estimate. The seasonally adjusted Vermont data for April show the Vermont civilian labor force increased by 50 from the prior month estimate. The number of employed increased by 600 and the number of unemployed decreased by 550. The over-the-month changes to the number of unemployed and the unemployment rate were statistically significant in the seasonally-adjusted series.

April unemployment rates for Vermont's 17 labor market areas ranged from 2.6 percent in Burlington-South Burlington to 6.8 percent in Derby (note: local labor market area unemployment rates are not seasonally adjusted). For comparison, the April unadjusted unemployment rate for Vermont was 3.7 percent which reflects a decrease of two-tenths of a percentage point from the revised March level and a decrease of six-tenths of a percentage point from a year ago.

Analysis of Job Changes by Industry

Not Seasonally Adjusted

The preliminary 'not-seasonally-adjusted' jobs estimates for April show a decrease of 1,800 jobs when compared to the revised March numbers. There was an increase of 300 jobs between the preliminary and the revised March estimates due to the inclusion of more data. The monthly decrease seen in the April numbers was attributable to seasonal decreases related to leisure and hospitality. The broader economic trends can be detected by focusing on the over-the-year changes in this data series. As detailed in the preliminary 'not-seasonally-adjusted' April data, Total Private industries have increased by 5,400 jobs (2.2 percent) and Government employment increased by 800 jobs (1.4 percent) in the past year.

Seasonally Adjusted

The seasonally adjusted data for April reports an increase of 1,800 jobs from the revised March data. As with the 'not-seasonally-adjusted' data, this over-the-month change is from the revised March numbers which experienced a 300 job increase from the preliminary estimates. The seasonally adjusted over-the-month changes in April were varied at the sectorial level. Those with a notable percent increase include: Leisure and Hospitality (+1,300 jobs or +3.6%), Other Services (+200 jobs or 1.9%) and Manufacturing (+400 jobs or +1.3%). Industries with a notable percent decrease include: Construction (-700 jobs or -4.6%) and Professional and Business Services (-300 jobs or -1.1%).

ANNOUNCEMENT: As of January 2015, the Bureau of Labor Statistics (BLS) has implemented changes to the statistical methodology for the Local Area Unemployment Statistics program and regional definitions for all BLS programs. For additional information, please visit: <http://www.bls.gov/lau/lauschanges2015.htm>

The Unemployment and Jobs Report for May is scheduled to be released on Friday, June 19, 2015 at 10:00 a.m.

For Immediate Release
May 27, 2015

Contact: Mathew Barewicz, (802) 828-4153
 Mathew.Barewicz@state.vt.us

Vermont Unemployment Rate Decreases to 3.6 percent in April

The Vermont Department of Labor announced today that the seasonally-adjusted statewide unemployment rate for April was 3.6 percent. This represents a decrease of two-tenths of a percentage point from the revised March rate (3.8 percent). The national average in April was 5.4 percent, which experienced a decrease of one-tenth of a percentage point from the previous month's estimate. As of the prior month's initial data, Vermont's unemployment rate was tied for sixth lowest in the country. April represents the seventh consecutive month without an increase to the unemployment rate.

Commissioner's Message

"Like the national economy, the Vermont economy is reporting continued overall economic improvement. With a declining number of unemployed Vermonters and Vermont businesses reporting record high employment levels, the Vermont economy continues to improve. Over the year, the private sector in Vermont is reporting an employment growth rate of 2.5 percent. This rate of growth is above Vermont's current population growth. The tightening of the available labor market creates opportunities for advancement for Vermonters at all skill levels. If you are looking for a job, to switch fields or advance your career, visit a job counselor at your local Vermont Department of Labor office", said Annie Noonan, Commissioner of Labor.

Chart 1. Unemployment Rate, seasonally adjusted

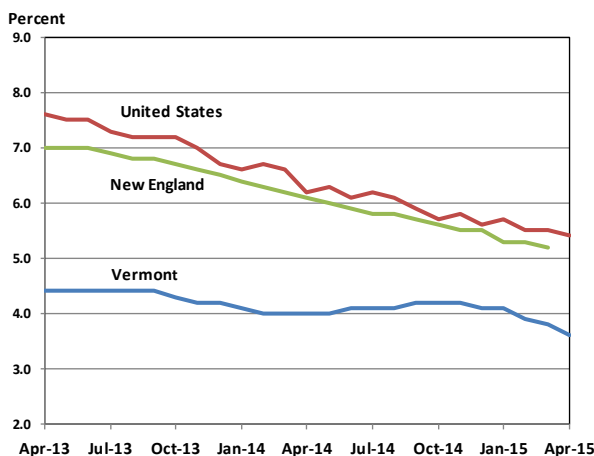
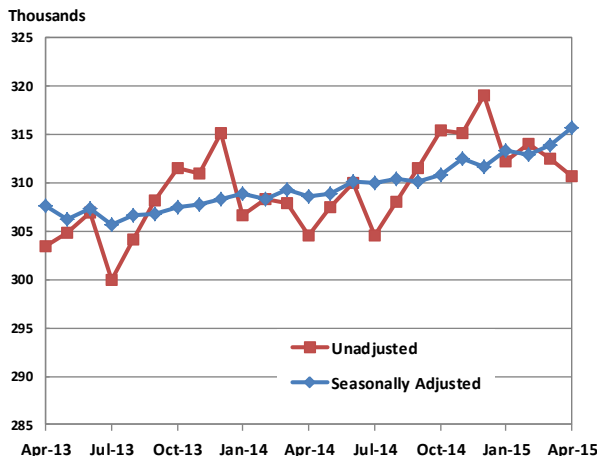


Chart 2. Vermont Nonfarm Payroll Employment



State of Vermont Overview

The Vermont seasonally adjusted unemployment rate decreased by two-tenths of a percentage point in April to a statewide average of 3.6 percent. The comparable rate for the United States (5.4 percent) decreased one-tenth of a percentage point from the revised March estimate. The seasonally adjusted Vermont data for April show the Vermont civilian labor force increased by 50 from the prior month estimate. The number of employed increased by 600 and the number of unemployed decreased by 550. The over-the-month changes to the number of unemployed and the unemployment rate were statistically significant in the seasonally-adjusted series.

April unemployment rates for Vermont's 17 labor market areas ranged from 2.6 percent in Burlington-South Burlington to 6.8 percent in Derby (note: local labor market area unemployment rates are not seasonally adjusted). For comparison, the April unadjusted unemployment rate for Vermont was 3.7 percent which reflects a decrease of two-tenths of a percentage point from the revised March level and a decrease of six-tenths of a percentage point from a year ago.

Analysis of Job Changes by Industry

Not Seasonally Adjusted

The preliminary 'not-seasonally-adjusted' jobs estimates for April show a decrease of 1,800 jobs when compared to the revised March numbers. There was an increase of 300 jobs between the preliminary and the revised March estimates due to the inclusion of more data. The monthly decrease seen in the April numbers was attributable to seasonal decreases related to leisure and hospitality. The broader economic trends can be detected by focusing on the over-the-year changes in this data series. As detailed in the preliminary 'not-seasonally-adjusted' April data, Total Private industries have increased by 5,400 jobs (2.2 percent) and Government employment increased by 800 jobs (1.4 percent) in the past year.

Seasonally Adjusted

The seasonally adjusted data for April reports an increase of 1,800 jobs from the revised March data. As with the 'not-seasonally-adjusted' data, this over-the-month change is from the revised March numbers which experienced a 300 job increase from the preliminary estimates. The seasonally adjusted over-the-month changes in April were varied at the sectorial level. Those with a notable percent increase include: Leisure and Hospitality (+1,300 jobs or +3.6%), Other Services (+200 jobs or 1.9%) and Manufacturing (+400 jobs or +1.3%). Industries with a notable percent decrease include: Construction (-700 jobs or -4.6%) and Professional and Business Services (-300 jobs or -1.1%).

ANNOUNCEMENT: As of January 2015, the Bureau of Labor Statistics (BLS) has implemented changes to the statistical methodology for the Local Area Unemployment Statistics program and regional definitions for all BLS programs. For additional information, please visit: <http://www.bls.gov/lau/lauschanges2015.htm>

The Unemployment and Jobs Report for May is scheduled to be released on Friday, June 19, 2015 at 10:00 a.m.

Table 1. Vermont Labor Force Estimates, seasonally adjusted

	Change From:				
	April 2015	March 2015	April 2014	March 2015	April 2014
Civilian Labor Force	348,300	348,250	348,800	50	-500
Employed	335,650	335,050	334,750	600	900
Unemployed	12,650	13,200	14,000	-550	-1,350
Unemployment Rate (%)	3.6	3.8	4.0	-0.2	-0.4

Vermont's labor force, employment and unemployment statistics are produced from a combination of a Statewide survey of households and statistical modeling. The data are produced by the Local Area Unemployment Statistics Program (LAUS), a cooperative program with the US Department of Labor, Bureau of Labor Statistics (www.bls.gov/lau) and the Vermont Department of Labor (www.vtlmi.info/labforce).

Table 2. Vermont Labor Market Areas, Labor Force Estimates

not seasonally adjusted

Labor Market Area ¹	April-15			Unemployment Rate ² (%)		
	Civilian Labor Force	Employed	Unemployed	April 2015	March 2015	April 2014
Vermont Total	343,950	331,200	12,750	3.7	3.9	4.3
Barre-Montpelier	25,800	24,900	900	3.5	4.3	4.4
Bennington	11,350	10,850	500	4.6	4.8	5.2
Brattleboro	22,250	21,350	900	4.0	3.7	4.5
Burlington-South Burlington	124,400	121,150	3,300	2.6	2.9	3.2
Derby	12,750	11,850	850	6.8	7.5	7.8
Highgate	10,100	9,700	400	3.9	4.7	4.7
Manchester	11,250	10,700	550	5.0	4.3	5.0
Middlebury	18,500	17,800	700	3.7	4.1	4.3
Morristown-Waterbury	17,050	16,150	900	5.4	5.5	6.4
Newbury	2,750	2,650	100	4.3	5.3	5.6
Northfield-Waitsfield	6,800	6,600	200	3.2	3.6	3.9
Randolph	7,400	7,100	300	3.9	4.3	4.7
Rutland	22,000	21,050	950	4.3	4.0	4.8
Springfield	11,050	10,650	450	4.0	3.7	4.8
St. Johnsbury	13,750	13,050	700	5.2	5.6	5.4
White River Junction	19,600	19,000	600	3.0	3.1	3.4
Woodstock	3,950	3,750	200	4.7	3.3	4.5

1- The area names above are common language titles; for official names of areas including encompassing cities and towns please refer to the Vermont Labor Market Area map (<http://www.vtlmi.info/lmadef2015.pdf>)

2 - Rate is the unrounded estimates for the number of unemployed divided by total labor force, expressed as a percent.

Source: Local Area Unemployment Statistics Program (LAUS) produced by the Vermont Department of Labor (www.vtlmi.info/labforce.cfm) in cooperation with the U.S. Bureau of Labor Statistics (www.bls.gov/lau).

Table 3. Vermont Nonfarm Employment, seasonally adjusted (thousands)

NAICS Industry	Apr-15	Mar-15	Apr-14	Change From:		% Change From:	
	Prelim	Revised	Revised	Mar-15	Apr-14	Mar-15	Apr-14
Statewide, Total Nonfarm¹	315.7	313.9	308.6	1.8	7.1	0.6	2.3
Total Private	259.0	257.6	252.8	1.4	6.2	0.5	2.5
Construction	14.6	15.3	14.6	-0.7	0.0	-4.6	0.0
Manufacturing	31.3	30.9	31.2	0.4	0.1	1.3	0.3
Durable Goods	20.1	19.9	20.5	0.2	-0.4	1.0	-2.0
Non-Durable Goods	11.2	11.0	10.7	0.2	0.5	1.8	4.7
Trade, Transportation and Utilities	56.8	56.7	55.7	0.1	1.1	0.2	2.0
Wholesale Trade	9.5	9.5	9.2	0.0	0.3	0.0	3.3
Retail Trade	38.7	38.5	38.0	0.2	0.7	0.5	1.8
Trans., Warehousing & Utilities	8.6	8.7	8.5	-0.1	0.1	-1.1	1.2
Financial Activities	12.3	12.2	12.1	0.1	0.2	0.8	1.7
Finance & Insurance	9.2	9.1	9.1	0.1	0.1	1.1	1.1
Real Estate, Rental & Leasing	3.1	3.1	3.0	0.0	0.1	0.0	3.3
Professional and Business Services	26.3	26.6	26.3	-0.3	0.0	-1.1	0.0
Professional & Technical Services	13.5	13.5	13.8	0.0	-0.3	0.0	-2.2
Administrative & Waste Services	10.6	10.7	10.4	-0.1	0.2	-0.9	1.9
Education and Health Services	63.8	63.4	62.2	0.4	1.6	0.6	2.6
Private Education Services	13.4	13.4	13.1	0.0	0.3	0.0	2.3
Health Care & Social Assistance	50.4	50.0	49.1	0.4	1.3	0.8	2.6
Leisure and Hospitality	37.6	36.3	35.0	1.3	2.6	3.6	7.4
Arts, Entertainment & Recreation	5.0	5.1	4.2	-0.1	0.8	-2.0	19.0
Accommodation & Food Services	32.6	31.2	30.8	1.4	1.8	4.5	5.8
Other Services	10.6	10.4	10.1	0.2	0.5	1.9	5.0
Government	56.7	56.3	55.8	0.4	0.9	0.7	1.6
Federal	6.8	6.8	6.7	0.0	0.1	0.0	1.5
State	19.8	19.4	19.1	0.4	0.7	2.1	3.7
Local	30.1	30.1	30.0	0.0	0.1	0.0	0.3
Burlington-S. Burlington Metro (NECTA)							
Total Nonfarm	124.9	125.0	121.9	-0.1	3.0	-0.1	2.5

1 - Statewide Total Nonfarm is a summed total. Mining & Logging and Information are not published seasonally adjusted because the seasonal component, which is small relative to the trend-cycle and irregular components, cannot be separated with sufficient precision.

Source: Current Employment Statistics Program (CES) produced by the Economic and Labor Market Information Division, Vermont Department of Labor (www.vtlmi.info/ces.cfm) in cooperation with the U.S Bureau of Labor Statistics (www.bls.gov/sae).

Estimates are preliminary and subject to revision. See Annual Summary for details.

Table 4. Vermont Nonfarm Employment, not seasonally adjusted

NAICS Industry	Apr-15	Mar-15	Apr-14	Change From:		% Change From:	
	Prelim	Revised	Revised	Mar-15	Apr-14	Mar-15	Apr-14
TOTAL NONFARM	310,700	312,500	304,500	-1,800	6,200	-0.6	2.0
TOTAL PRIVATE	251,700	254,200	246,300	-2,500	5,400	-1.0	2.2
GOODS-PRODUCING	44,700	43,600	44,600	1,100	100	2.5	0.2
MINING & LOGGING	700	700	700	0	0	0.0	0.0
CONSTRUCTION	13,000	12,400	13,000	600	0	4.8	0.0
MANUFACTURING	31,000	30,500	30,900	500	100	1.6	0.3
Durable Goods	19,900	19,600	20,300	300	-400	1.5	-2.0
Computer & Electrical Equipment Mfg.	6,300	6,400	6,900	-100	-600	-1.6	-8.7
Fabricated Metal Products Mfg.	2,400	2,400	2,400	0	0	0.0	0.0
Non-Durable Goods	11,100	10,900	10,600	200	500	1.8	4.7
Food Mfg.	5,300	5,300	5,100	0	200	0.0	3.9
SERVICE-PROVIDING	266,000	268,900	259,900	-2,900	6,100	-1.1	2.3
TRADE, TRANSPORTATION AND UTILITIES	55,600	55,400	54,500	200	1,100	0.4	2.0
Wholesale Trade	9,300	9,400	9,100	-100	200	-1.1	2.2
Retail Trade	37,900	37,500	37,100	400	800	1.1	2.2
Food & Beverage Stores	9,800	9,800	9,700	0	100	0.0	1.0
General Merchandise Stores	3,200	3,200	3,200	0	0	0.0	0.0
Transportation, Warehousing & Utilities	8,400	8,500	8,300	-100	100	-1.2	1.2
Transportation & Warehousing	6,700	6,800	6,600	-100	100	-1.5	1.5
Utilities	1,700	1,700	1,700	0	0	0.0	0.0
INFORMATION	5,000	5,000	4,800	0	200	0.0	4.2
FINANCIAL ACTIVITIES	12,100	12,100	11,900	0	200	0.0	1.7
Finance & Insurance	9,100	9,100	9,000	0	100	0.0	1.1
Real Estate, Rental & Leasing	3,000	3,000	2,900	0	100	0.0	3.4
PROFESSIONAL AND BUSINESS SERVICES	25,900	25,500	26,000	400	-100	1.6	-0.4
Professional & Technical Services	13,500	13,500	13,800	0	-300	0.0	-2.2
Administrative & Waste Services	10,200	9,700	10,200	500	0	5.2	0.0
EDUCATION AND HEALTH SERVICES	64,200	63,800	62,200	400	2,000	0.6	3.2
Educational Services	13,800	13,900	13,400	-100	400	-0.7	3.0
Colleges and Universities	9,100	9,000	8,800	100	300	1.1	3.4
Health Care & Social Assistance	50,400	49,900	48,800	500	1,600	1.0	3.3
Ambulatory Health Care Services	16,700	16,500	16,100	200	600	1.2	3.7
Hospitals	13,500	13,400	13,100	100	400	0.7	3.1
Nursing & Residential Care Facilities	7,400	7,300	7,300	100	100	1.4	1.4
Social Assistance	12,800	12,700	12,300	100	500	0.8	4.1
LEISURE AND HOSPITALITY	33,800	38,600	32,300	-4,800	1,500	-12.4	4.6
Arts, Entertainment & Recreation	4,300	4,600	3,600	-300	700	-6.5	19.4
Accommodation & Food Services	29,500	34,000	28,700	-4,500	800	-13.2	2.8
Accommodation	10,600	14,700	10,000	-4,100	600	-27.9	6.0
Hotels & Motels	9,500	13,400	9,200	-3,900	300	-29.1	3.3
Food Services & Drinking Places	18,900	19,300	18,700	-400	200	-2.1	1.1
OTHER SERVICES	10,400	10,200	10,000	200	400	2.0	4.0
GOVERNMENT	59,000	58,300	58,200	700	800	1.2	1.4
Federal Government	6,800	6,700	6,700	100	100	1.5	1.5
State Government Education	10,900	10,600	10,500	300	400	2.8	3.8
Other State Government	9,700	9,700	9,400	0	300	0.0	3.2
Local Government Education	24,400	24,100	24,500	300	-100	1.2	-0.4
Other Local Government	7,200	7,200	7,100	0	100	0.0	1.4

Source: Current Employment Statistics Program (CES) produced by the Economic and Labor Market Information Division, Vermont Department of Labor (www.vtلمي.info/ces.cfm) in cooperation with the U.S Bureau of Labor Statistics (www.bls.gov/sae).

Estimates are preliminary and subject to revision. See Annual Summary for details.