



Population Estimates & Legislative Reapportionment

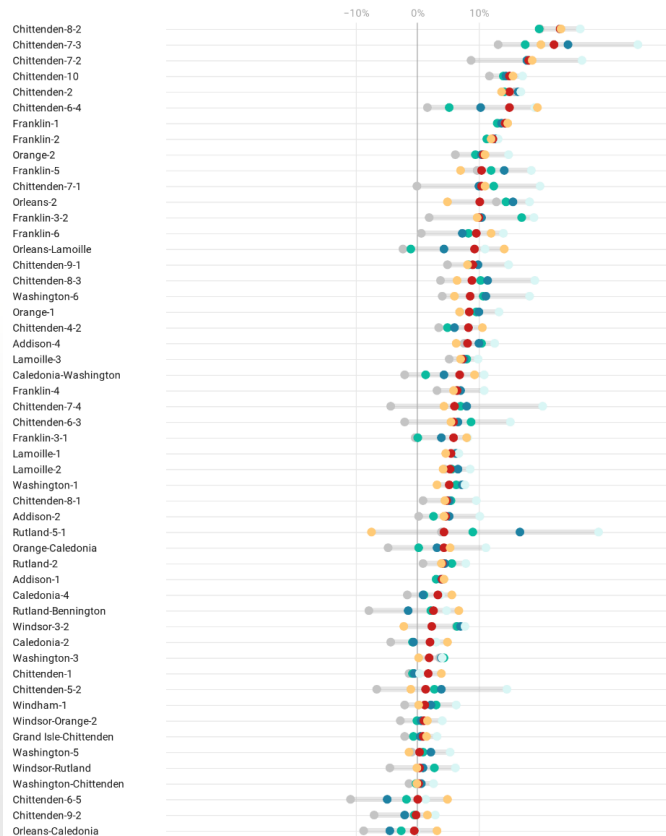
JOHN E. ADAMS

HOUSE COMMITTEE ON GOVERNMENT OPERATIONS
JANUARY 15, 2021

Estimated % Deviation from Ideal Population for House Districts

Table shows % for various population estimates. ACS 'high' and 'low' estimates calculated using margin of error at 90% confidence level.

● ACS 2019 5YR Low ● ACS 2018 5YR ● ACS 2019 5YR ● ACS 2019 5YR High ● Composite ● ESRI 2020

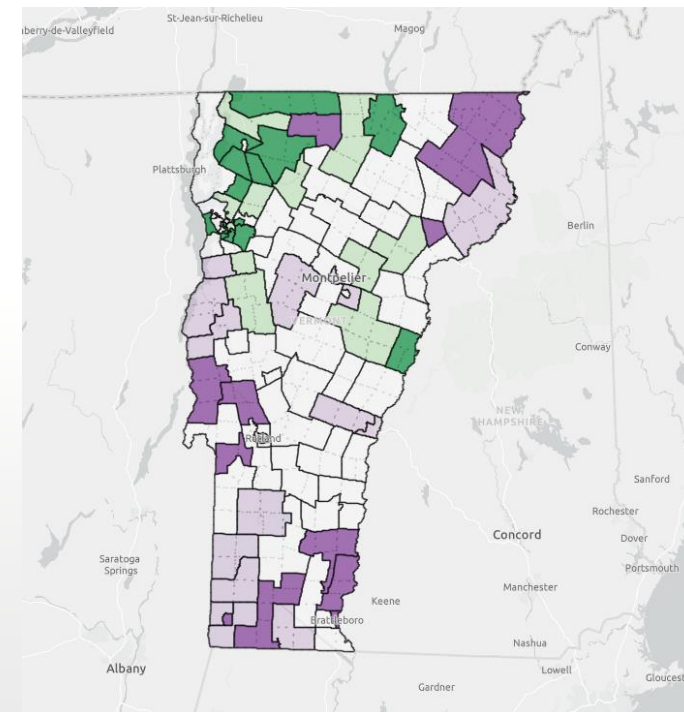


Search in table

Page 1 of 6

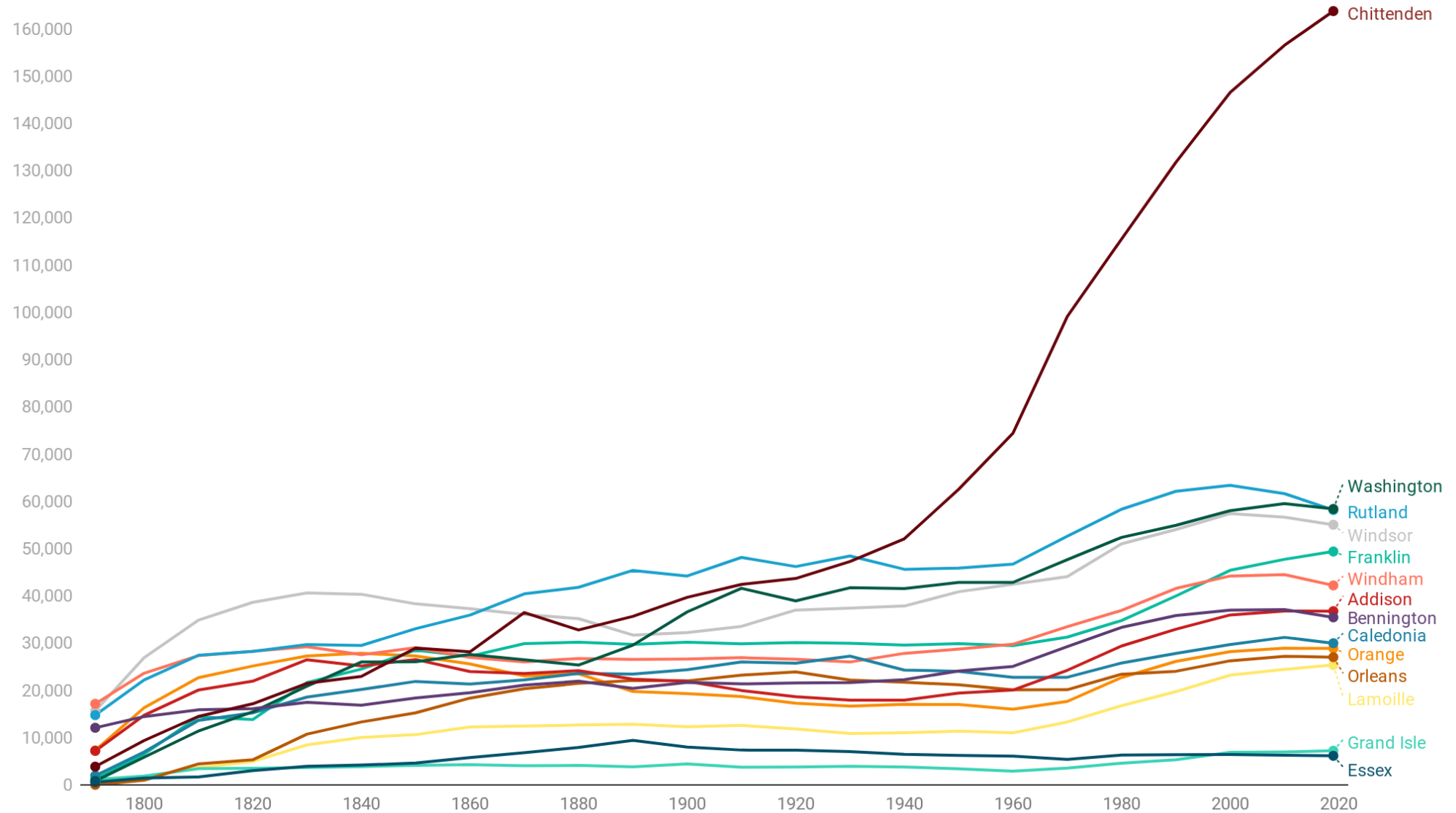
NAME	MEMBERS	AREA	2010 – 2019	DEVIATION (POP)	%
Addison Rutland	1	155.0	3,990 → 3,722	-510	-12.1%
Addison-1	2	39.1	8,496 → 8,812	348	4.1%
Addison-2	1	188.8	4,496 → 4,430	-198	-4.7%
Addison-3	2	143.4	7,897 → 7,911	553	-6.5%
Addison-4	2	168.6	8,922 → 9,159	695	8.2%
Addison-5	1	105.2	3,778 → 3,842	390	-9.2%
Bennington-1	1	94.2	3,951 → 3,880	-352	-8.3%
Bennington-2-1	2	33.8	7,997 → 7,826	-638	-7.5%
Bennington-2-2	2	8.7	7,767 → 7,349	-1,115	-13.2%
Bennington-3	1	126.9	3,840 → 3,838	-394	-9.3%
Bennington-4	2	132.8	7,827 → 7,856	-608	-7.2%
Bennington-Rutland	1	179.4	4,130 → 3,937	-295	-7.0%
Caledonia-1	1	119.8	4,162 → 4,165	-67	-1.6%
Caledonia-2	1	90.3	4,161 → 4,322	90	2.1%
Caledonia-3	2	36.7	7,603 → 7,490	-974	-11.5%
Caledonia-4	2	112.0	8,763 → 8,750	286	3.4%
Caledonia-Washington	1	147.0	4,361 → 4,525	293	6.9%
Chittenden-1	1	32.7	4,081 → 4,306	74	1.7%
Chittenden-10	2	30.9	9,039 → 9,734	1,270	15.0%
Chittenden-2	2	30.5	8,698 → 9,734	1,270	15.0%

Created with Datawrapper



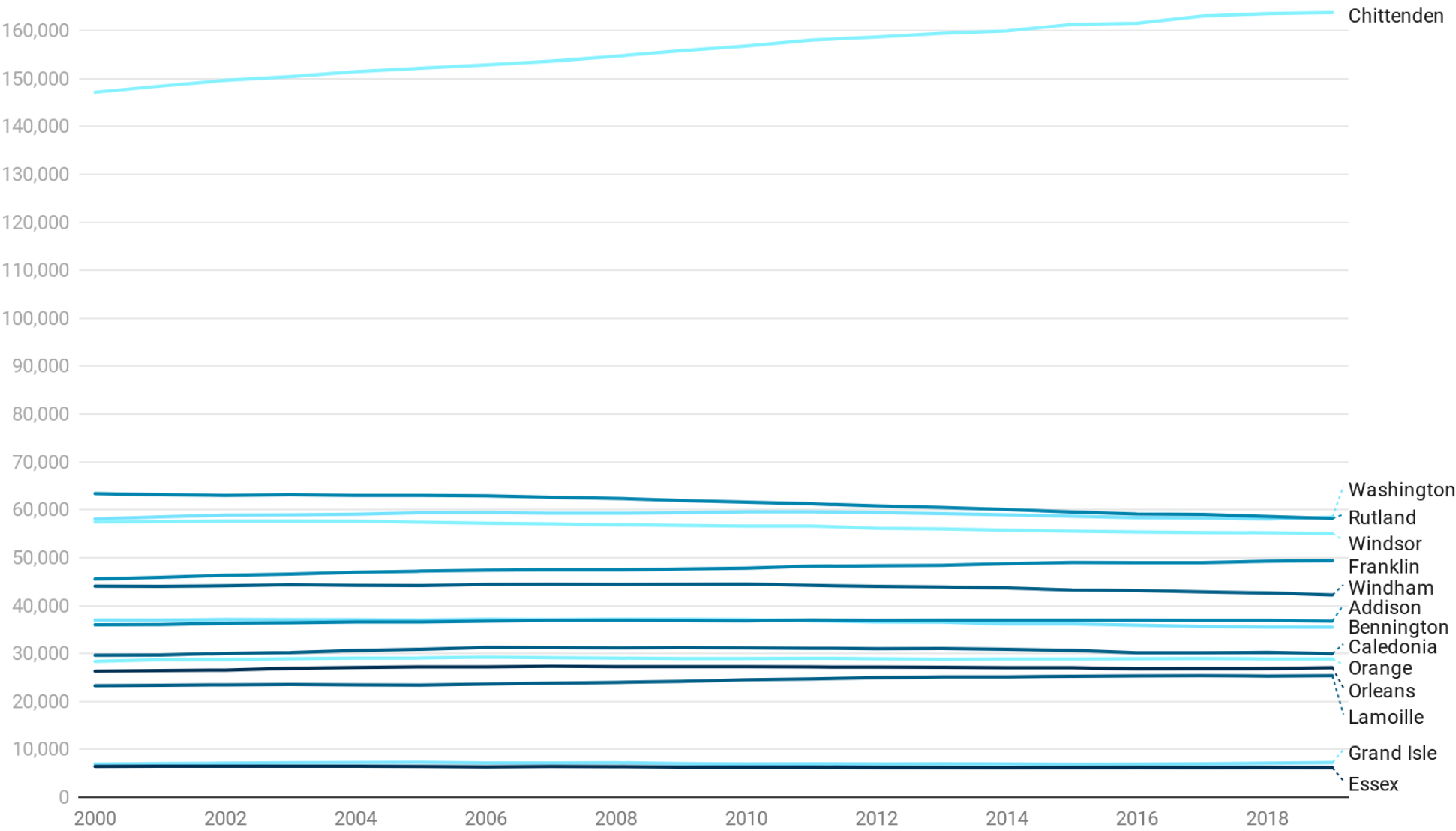
lab.mapvt.com

VT County Population: 1791-2019



VT County Population Estimates

2000-2019

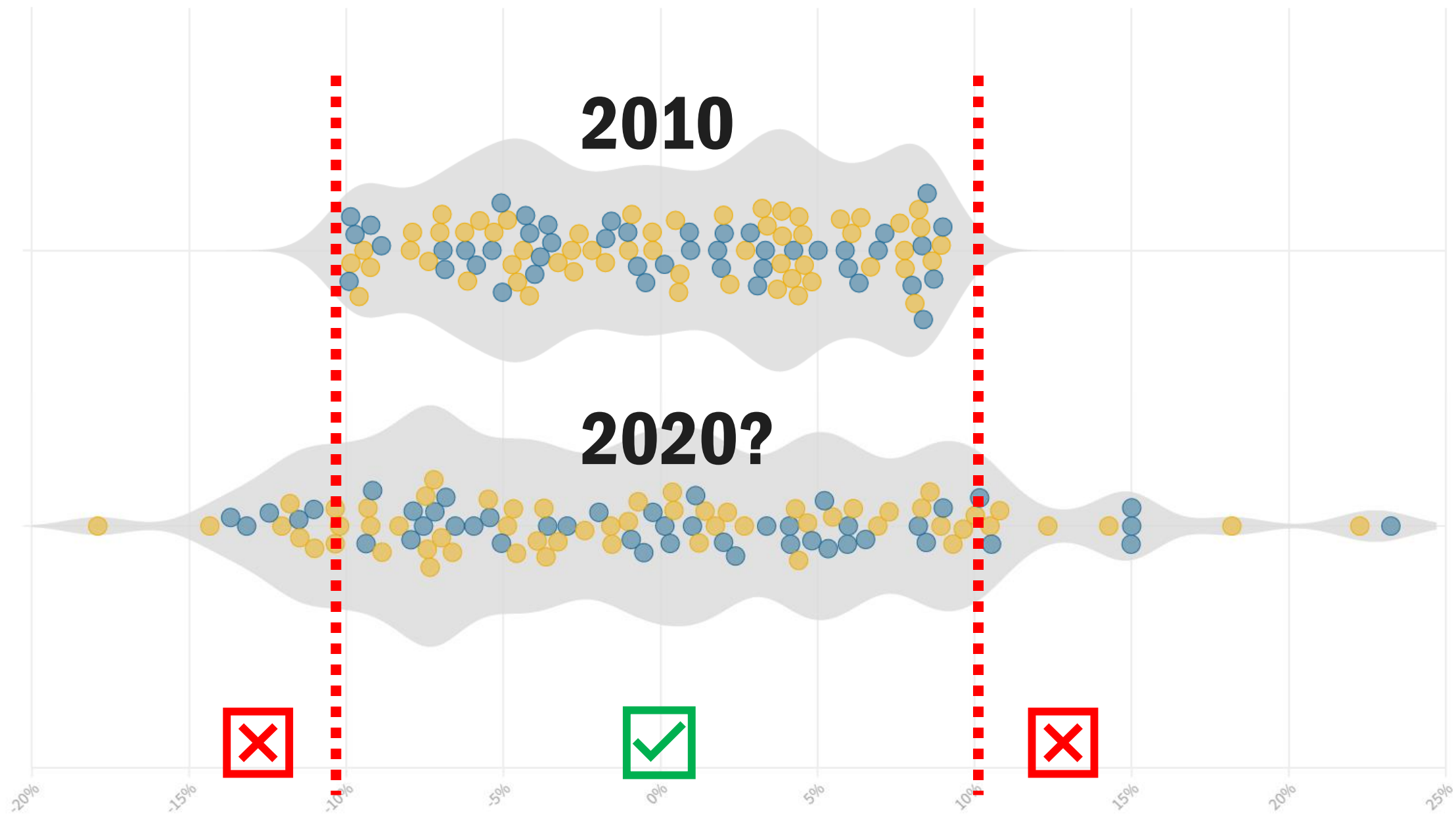




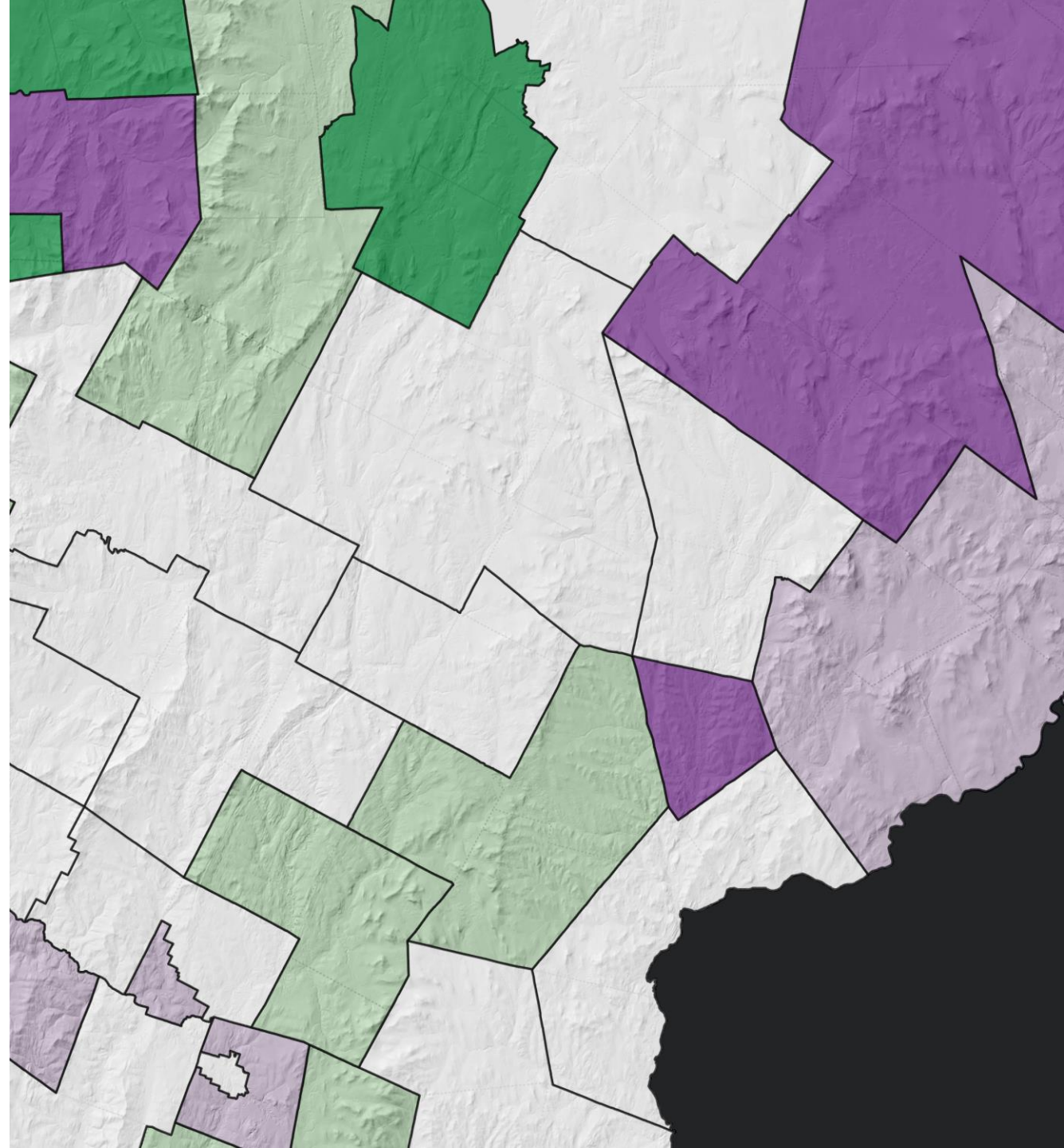
4,162

estimated 'Ideal' population per member

Members ● 2 ● 1



Population estimates used are a composite of American Community Survey 2015-2019 (5-year) and ESRI population projections for July 1, 2020 (June 2020 release). ESRI projections use Experian; the US Postal Service (USPS); Metrostudy, and Axiometrics.



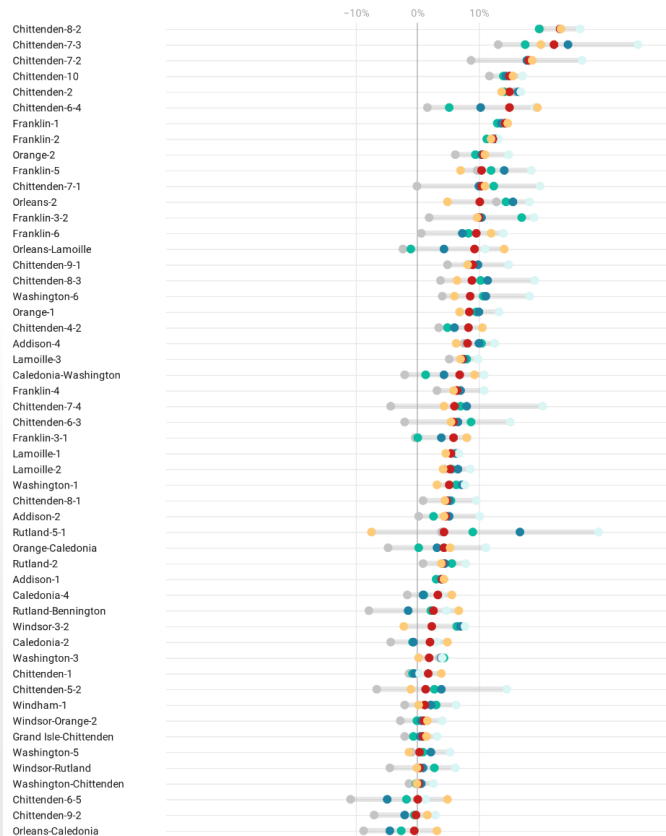


**SOME OF THE ESTIMATES
WILL BE OFF**

Estimated % Deviation from Ideal Population for House Districts

Table shows % for various population estimates. ACS 'high' and 'low' estimates calculated using margin of error at 90% confidence level.

● ACS 2019 5YR Low ● ACS 2018 5YR ● ACS 2019 5YR ● ACS 2019 5YR High ● Composite ● ESRI 2020

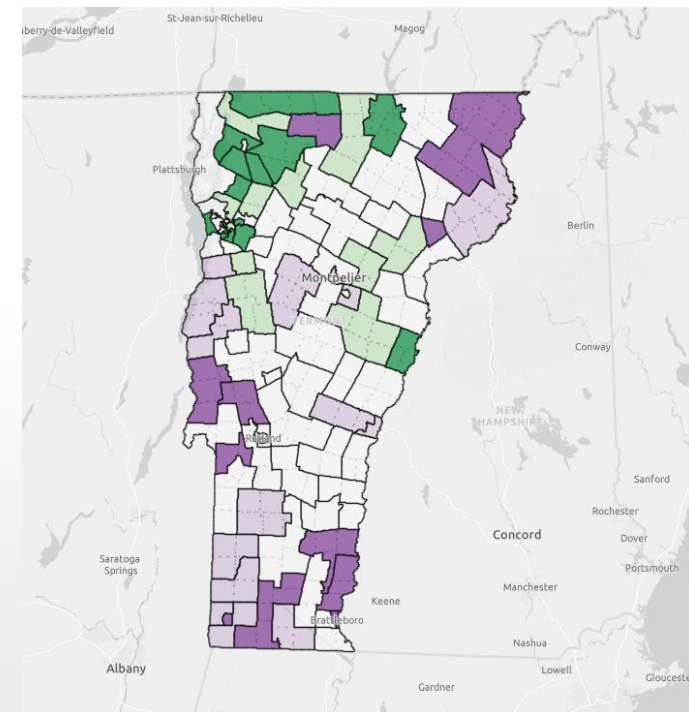


Search in table

Page 1 of 6

NAME	MEMBERS	AREA	2010 – 2019	DEVIATION (POP)	%
Addison Rutland	1	155.0	3,990 → 3,722	-510	-12.1%
Addison-1	2	39.1	8,496 → 8,812	348	4.1%
Addison-2	1	188.8	4,496 → 4,430	-198	-4.7%
Addison-3	2	143.4	7,897 → 7,911	553	-6.5%
Addison-4	2	168.6	8,922 → 9,159	695	8.2%
Addison-5	1	105.2	3,778 → 3,842	390	-9.2%
Bennington-1	1	94.2	3,951 → 3,880	-352	-8.3%
Bennington-2-1	2	33.8	7,997 → 7,826	-638	-7.5%
Bennington-2-2	2	8.7	7,767 → 7,349	-1,115	-13.2%
Bennington-3	1	126.9	3,840 → 3,838	-394	-9.3%
Bennington-4	2	132.8	7,827 → 7,856	-608	-7.2%
Bennington-Rutland	1	179.4	4,130 → 3,937	-295	-7.0%
Caledonia-1	1	119.8	4,162 → 4,165	-67	-1.6%
Caledonia-2	1	90.3	4,161 → 4,322	90	2.1%
Caledonia-3	2	36.7	7,603 → 7,490	-974	-11.5%
Caledonia-4	2	112.0	8,763 → 8,750	286	3.4%
Caledonia-Washington	1	147.0	4,361 → 4,525	293	6.9%
Chittenden-1	1	32.7	4,081 → 4,306	74	1.7%
Chittenden-10	2	30.9	9,039 → 9,734	1,270	15.0%
Chittenden-2	2	30.5	8,698 → 9,734	1,270	15.0%

Created with Datawrapper



lab.mapvt.com

Learn More

- [2020 Year in Review](#)
- [Census: High Cost of a Low Count](#)
- [Interactive Map Viewer](#)
- [Tax Parcel Data Viewer](#)
- [Geodata Portal](#)
- vcgi.vermont.gov

john.e.adams@vermont.gov

