

Spelling

A Plan of Marlborough in the Province of New Hampshire layd out on May 1762 and all the Numbers marked at the West end of their Respective Lots by Joseph Allen Jun. Surveyor

Eleazer Clapp  
 Bregman  
 Joel Strong  
 Timothy Parsons } Tenants

Small Beach and Stones Mark

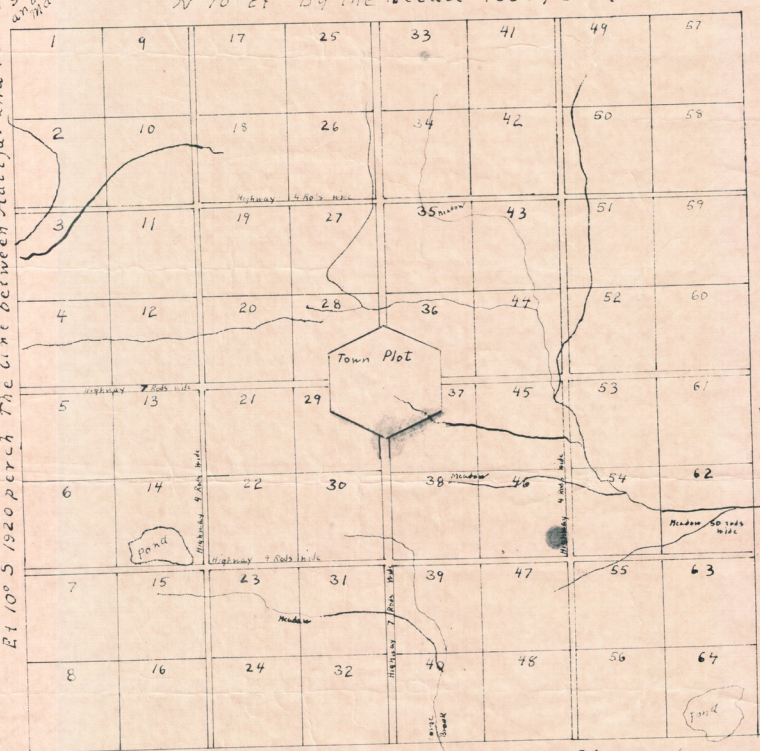
N 10° E: By the Veeale 1820 perch

E 1 10° S 1920 perch The line between Halifax and Marlborough

Halifax

North

Marlborough



The line Between Brattleborough and Marlborough N 10° E 6 miles

N.B.S. Plan Contains a Particular Draft of all the Rivers and Brooks of any bigness in 5 Townships and Drafted according their Courses. The town plot is layd out and contains 64 acres all being come by order of Samuel Mather } Committee  
 Joseph Allen  
 Eleazer Clapp

Protracted by a Scale of one litch and half to a mile  
 Joseph Allen Jr.  
 Copied by Hites 1946

M.H. Tree and Stones Mark N 10° E 6 miles

Dunsmuir

19-1316

Marlboro

Windham Co. 1311