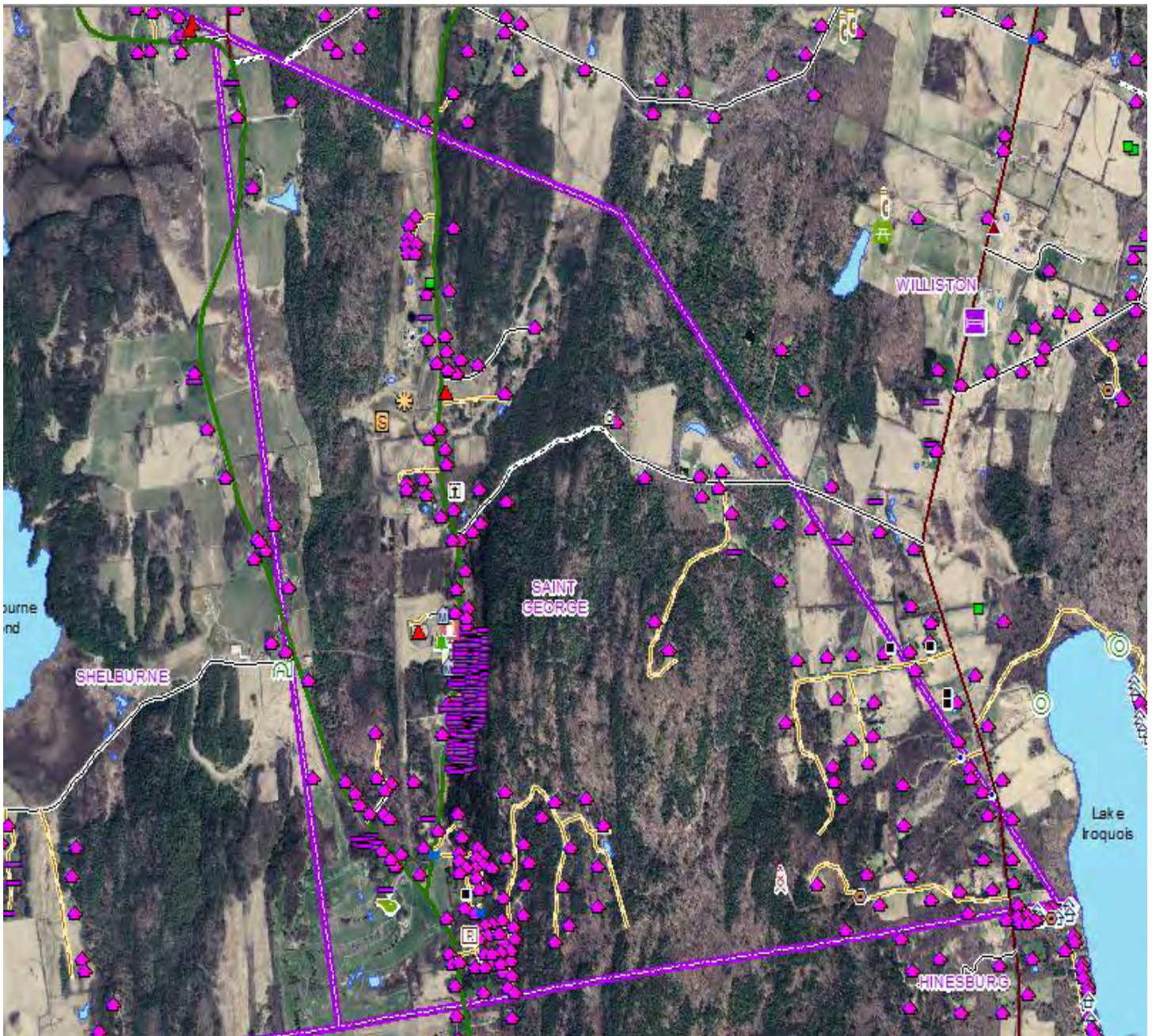


ST. GEORGE, VERMONT ANNUAL REPORT



Fiscal Year July 1, 2015 to June 30, 2016

Town Meeting • Tuesday March 7, 2017

Little Red Schoolhouse

35 Barber Road

6:00 p.m.

PLEASE BRING YOUR ANNUAL REPORT & A HINESBURG FOOD SHELF DONATION

Dog Licenses

Dogs six months or older must be licensed by **April 1st** each year to avoid a penalty.

License fees are as follows:

	By April 1st	After April 1st
Spayed or Neutered	\$10.00	\$12.00
Not Spayed or Neutered	\$14.00	\$16.00

You will need to bring a copy of your dog's current rabies vaccination and certificate of neutering or spaying if applicable to the Town Clerk's Office to license your dog.

If you lose your dog please call Ed Waite, Animal Control Officer, at 802-343-0760. According to St. George's Animal Control Ordinance, any impounded domestic pet or wolf-hybrid not redeemed within seven (7) business days may be destroyed or given up for adoption.

RABIES ALERT!



- Don't feed or touch wild animals, or animals you don't know – even baby animals.
- Get rabies shots for all your pets, even cats.
- Call your doctor right away if you are bitten, or get animal saliva in a cut, eyes, nose, or mouth.



Vermont Rabies Hotline: 1-800-4-RABIES

If you have contact with an animal that may have rabies, call the Vermont Department of Health at 1-800-640-4374 or 863-7240 (8 to 4:30 Mon-Fri)

Table of Contents

TOWN MEETING	PAGE
2016 Elected Officers & 2016 Appointed Officers	1-2
2016 Selectboard Report	3
Local Roads Expenditures Report with Five Year Comparison	4
Town Meeting Warning	5-6
Town of St. George FY 2017-2018 General Fund Budget	7-10
Appendix A	11
Capital Improvement Program	12
2016 Annual Town Meeting Minutes	13-16
Town of St. George Compilation Report & Financial Statements	17-28
St. George Planning Commission	29
St. George Development Review Board	30
Town of St. George Year-End Zoning Report	31-32
St. George Cemetery Commission	33
Green Up Day 2016	34
Auditors Report	35
St. George Assessor's Report	36
Youth Program	37-38
St. George Town Park	39
St. George Community Garden	40
Saint George Historic & Conservation Trust	41
Chittenden Solid Waste District	42-43
Chittenden County Regional Planning Commission	44-47
Chittenden Unit for Special Investigations	48
Committee on Temporary Shelter	49-50
Dorothy Alling Memorial Library	51-52
Greater Burlington Industrial Corporation	53
Lake Iroquois Association	54
Hinesburg Community Resource Center	55
Vermont Center for Independent Living	56
Visiting Nurse Association	57
Steps to End Domestic Violence	58
American Red Cross	59
VT Alert Public Portal	60
E-911	61
Age Well	62-64
Vermont Department of Health Report for St. George VT	65
SCHOOL DISTRICT MEETING	
Reference Page for Additional School Budget Materials	66
Warning St. George Town School District Annual Meeting	67
Abstract of 2015 Annual Meeting	68-70
Board of Educator's Annual Report and Transportation Reimbursement	71-72
Audit Notice	73
Superintendent of School's Annual Report	74
Schedule of Student Enrollment	75

2016 ELECTED OFFICERS

MODERATOR

Steve Faust
Steve Faust

Town Meeting
School District Meeting

TOWN CLERK/TREASURER

April Pillsbury

Term expires 2018

SELECTBOARD

Nina Friscia
Jeff Pillsbury
Charles Scott
Wayne Ring
Harry Bowen

Term expires 2017
Term expires 2017
Term expires 2018
Term expires 2018
Term expires 2019

LISTERS

Lori Ring
Sarah Tischler
Bill Hickson

Term expires 2017
Term expires 2018
Term expires 2019

AUDITORS

Andrei Leontiev
Joan Landon
Vacant

Term expires 2017
Term expires 2018
Term expires 2019

SCHOOL DIRECTORS

Eric Hunter
Carol Blakely
Kelly Bowen

Term expires 2017
Term expires 2018
Term expires 2019

CEMETERY COMMISSIONERS

Mary Alice Favro
Richard Kalagher
Brian Vaughan

Term expires 2017
Term expires 2018
Term expires 2019

CONSTABLE

Vacant

AGENT TO PROSECUTE & DEFEND SUITS

Vacant

TOWN GRAND JUROR

Vacant

JUSTICES OF THE PEACE

Sandra Dubois
Mary Alice Favro
Debra Kobus
April Pillsbury
Judith Pillsbury

2016 APPOINTED OFFICERS

TOWN SERVICE OFFICER	Maggie Kerrin
EMERGENCY MANAGEMENT DIRECTOR	Al Barber
CHITTENDEN COUNTY REGIONAL PLANNING COMMISSION (CCRPC) REPRESENTATIVE	Jeff Pillsbury Maggie Kerrin, <i>alternate</i>
CHITTENDEN SOLID WASTE DIVISION (CSWD) REPRESENTATIVE	Nina Friscia Maggie Kerrin, <i>alternate</i>
DELINQUENT TAX COLLECTOR	April Pillsbury
DRIVEWAY PERMIT OFFICER	E.W. Hanson
E911	Maggie Kerrin
FIRE WARDEN	Ed Waite
GREEN UP CHAIR	Mary Alice Favro
HEALTH OFFICER	Wayne Ring
ANIMAL CONTROL OFFICER	Ed Waite
LAKE IROQUOIS REPRESENTATIVE	Nina Friscia Maggie Kerrin, <i>alternate</i>
ROAD COMMISSIONER	Neil Boyden
TREE WARDEN	Vacant
ZONING ADMINISTRATOR	E.W. Hanson
ASSESSOR	Vermont Appraisal Company
YOUTH PROGRAM	Caroline Jalbert
DEVELOPMENT REVIEW BOARD	Scott Baker Andrei Leontiev Connie Kendall Corey Kennedy Marie Mastro, <i>alternate</i> Matt Palmer, <i>alternate</i>
PLANNING COMMISSION	Scott Baker Connie Kendall Lisa Dillon Beliveau Dan Pillsbury

Town of Saint George
2016 Selectboard Report

This last year has been a busy year for the Town of St. George. All of our Boards and Commissions have been very active and much has been accomplished. Here are some of the highlights:

- We have a **new Town Administrator**. Maggie Kerrin replaced Barbara Young who moved to Nevada. Maggie is doing an outstanding job and, as with Barbara, has made life for the Select Board efficient, effective, and a lot easier. Maggie is joined by the other staff: April Pillsbury who is our Town Clerk, Town Treasurer, and Delinquent Tax Collector; Ed Hanson, our Zoning Administrator; and Neil Boyden our Road Commissioner.
- Being very concerned about rabies being found just on our border with Williston, we have passed a **new and stricter Animal Control Ordinance**. We encourage all residents to get their dogs vaccinated and to get their dog licenses each spring. We have had to increase the consequences if you do not. We also had a couple of incidences of dog bites in town. We now have a greater ability to impound dogs and fine the owners than we have had in the past. And we have a new and experienced Animal Control Warden to enforce the new ordinance.
- The large **Schoolhouse Place proposed development** at the Town Center has been discontinued. The developer has given up his option with the Town. The Planning Commission will be looking at the current zoning to see if it should be modified in any way.
- Town Residents overwhelmingly voted for St. George to enter into **the new Champlain Valley School District outlined by Act 46**. We congratulate our school board and its Chair, Kelly Bowen, for their tireless work on all of this. By being part of the largest school district in the State, this move should reduce St. George education taxes significantly. It is estimated that the cost per student to St. George residents will be reduced by around \$2,000 per student while maintaining the excellent education they receive.
- We held our second **All Boards Meeting** to encourage discussion and communication by bringing together for one evening the Select Board, the Planning Commission, the Development Review Board, the School Board, the Cemetery Commission, the Youth Program, Emergency Management, Police and Fire Departments (which we contract for), Animal Control, Listers, Auditors, Green up Committee, Lake Iroquois Representative, and others. It was an informative and positive evening. As we, the smallest town in Vermont, begin our 2017-2018 fiscal year, the All Boards meeting was a good reminder of **how fortunate we have always been for the volunteer service of residents over our 254 year history**.

Sincerely,

Your Select Board:

Charles Scott, Chair

Nina Frisca, Vice Chair

Wayne Ring, Clerk

Harry Bowen

Jeff Pillsbury

Local Roads Expenditures Report with Five Year Comparison

Road Maintenance

House-holds	Road	Mileage	FY 11-12	FY 12-13	FY 13-14	FY 14-15	FY 15-16	5 YR Total	Average Annual Cost
4	Ayer Road	0.11	\$1,400	\$5,160	\$4,800	\$225	\$4,115	\$15,700	\$3,140
0	Ayer - Class 4	0.60	\$0	\$7,100	\$700	\$2,632	\$825	\$11,257	\$2,251
4	Ayer Total	0.71	\$1,400	\$12,260	\$5,500	\$2,857	\$4,940	\$26,957	\$5,391
5	Barber	0.20	\$0	\$14,900	\$457	\$350	\$1,034	\$16,741	\$3,348
5	Goose Creek	0.37	\$0	\$0	\$0	\$597	\$405	\$1,002	\$200
13	Oak Hill	0.30	\$1,600	\$1,777	\$11,944	\$72,619	\$1,200	\$89,140	\$17,828
	(Grant Money)					(\$50,834)			
13	Oak Hill Total	0.30	\$1,600	\$1,777	\$11,944	\$21,785	\$1,200	\$38,306	\$7,661
15	Willow Brook	0.47	\$6,250	\$91	\$3,447	\$4,567	\$3,623	\$17,978	\$3,596
8	Winterbottom	0.15	\$300	\$800	\$350	\$500	\$855	\$2,805	\$561
50	Total	2.20	\$9,550	\$29,828	\$21,698	\$30,656	\$12,057	\$103,789	\$20,757

Plowing & Sanding

House-holds	Road	Mileage	FY 11-12	FY 12-13	FY 13-14	FY 14-15	FY 15-16	5 YR Total	Average Annual Cost
4	Ayer Road	0.11	\$2,046	\$3,060	\$3,876	\$3,864	\$1,620	\$14,466	\$2,893
0	Ayer - Class 4	0.60	closed	closed	closed	closed	closed	closed	\$0
4	Ayer Total	0.71	\$2,046	\$3,060	\$3,876	\$3,864	\$1,620	\$14,466	\$2,893
5	Barber	0.20	\$2,310	\$5,032	\$4,650	\$3,864	\$1,440	\$17,296	\$3,459
5	Goose Creek	0.37	\$2,046	\$3,196	\$4,012	\$4,209	\$1,500	\$14,963	\$2,993
13	Oak Hill	0.30	\$1,104	\$1,127	\$1,143	\$1,161	\$1,161	\$5,696	\$1,139
15	Willow Brook	0.47	\$1,104	\$1,127	\$1,143	\$1,161	\$1,161	\$5,696	\$1,139
8	Winterbottom	0.15	\$2,376	\$3,332	\$4,080	\$4,485	\$1,500	\$15,773	\$3,155
50	Total	2.20	\$10,986	\$16,874	\$18,904	\$18,744	\$8,382	\$73,890	\$14,778

COMBINED EXPENDITURES

House-holds	Road	Mileage	FY 11-12	FY 12-13	FY 13-14	FY 14-15	FY 15-16	5 YR Total	Average Annual Cost
4	Ayer Road	0.11	\$3,446	\$8,220	\$8,676	\$4,089	\$5,735	\$30,166	\$6,033
0	Ayer - Class 4	0.60	\$0	\$7,100	\$700	\$2,632	\$825	\$11,257	\$2,251
4	Ayer Total	0.71	\$3,446	\$15,320	\$9,376	\$6,721	\$6,560	\$41,423	\$8,285
5	Barber	0.20	\$2,310	\$19,932	\$5,107	\$4,214	\$2,474	\$34,037	\$6,807
5	Goose Creek	0.37	\$2,046	\$3,196	\$4,012	\$4,806	\$1,905	\$15,965	\$3,193
13	Oak Hill	0.30	\$2,704	\$2,904	\$13,087	\$22,946	\$2,361	\$44,002	\$8,800
15	Willow Brook	0.47	\$7,354	\$1,218	\$4,590	\$5,728	\$4,784	\$23,674	\$4,735
8	Winterbottom	0.15	\$2,676	\$4,132	\$4,430	\$4,985	\$2,355	\$18,578	\$3,716
50	Total	2.20	\$20,536	\$46,702	\$40,602	\$49,400	\$20,439	\$177,679	\$35,536

TOWN MEETING WARNING

The legal voters of the Town of Saint George, Vermont are hereby warned and notified to meet at the Little Red Schoolhouse, 35 Barber Road, Saint George, Vermont on Tuesday, March 7, 2017 at 6:00 p.m. to transact the following:

- | | |
|------------|---|
| Article 1 | To elect a moderator |
| Article 2 | To elect a Selectperson for a two-year term that expires in 2019 |
| Article 3 | To elect a Selectperson for a three-year term that expires in 2020 |
| Article 4 | To elect a Lister for a three-year term that expires in 2020 |
| Article 5 | To elect an Auditor to finish two years of a three year term that expires in 2019 |
| Article 6 | To elect an Auditor for a three-year term that expires in 2020 |
| Article 7 | To elect a Cemetery Commissioner for a three-year term that expires in 2020 |
| Article 8 | To authorize the Selectboard to appoint a Collector of Delinquent Taxes |
| Article 9 | To authorize the Town Clerk to approve additions to the voter checklist pursuant to Title 17, Vermont Statutes Annotated, Section 21 44 (b) |
| Article 10 | To authorize the collection of personal and real estate taxes as provided by law and as set forth below: <ul style="list-style-type: none">a. Taxes to be collected; one-half on October 2, 2017 and the remaining one-half on April 2, 2018b. Interest to be charged on unpaid taxes at the rate of one percent (1%) per month (or fraction thereof) for the first three months, and one and a half percent (1.5%) per month for late payments more than three months from due date |

- c. In addition to interest, a penalty of eight percent (8%) of the tax bill shall be imposed for any late payment. A postmark of October 2, 2017 and April 2, 2018 is acceptable as on time for payment of taxes. Taxpayers are responsible for ensuring that taxes are paid from mortgage escrow accounts
- d. A service charge of twenty-five dollars (\$25) will be assessed for checks returned for insufficient funds

Article 11 To authorize the imposition of property taxes to raise the funds to satisfy the Town budget as warned or as may be amended at Town meeting

Article 12 To authorize the Selectboard to accept the generous gift of the Little Red Schoolhouse; land and building, from the St. George Historic and Conservation Trust

Article 13 To transact any other business properly brought before the meeting

Dated at Saint George, Vermont effective the 11th day of January, 2017



Charles Scott, Chair



Nina Friscia, Vice Chair



Wayne Ring



Jeff Pillsbury



Harry Bowen

Town of St. George
FY 2017-2018 General Fund Budget

		FY 2015-2016	FY 2015-2016	FY 2016-2017	FY 2017-2018	NOTES
	REVENUES	Budget	Actual	Budget	Proposed	
10100	Interest- Money Market	250	417	280	350	
10200	Interest - CD	228	235	212	212	
NEW	Interest-Late Taxes	-	-	-	2,970	
10500	Recording Fees	7,600	7,683	8,700	8,700	(Previously Fees)
10505	Pavilion Rental	60	-	60	60	(Previously Pavillion)
10520	Highway State Aid	3,700	3,680	3,400	3,128	
10530	Traffic/Other Fines	5,000	5,036	5,000	5,000	(Previously Fines)
10540	Truck Permits	145	220	170	200	(Previously Permits)
10555	State of Vt Reappraisal	3,350	3,518	3,300	3,200	
11000	Dog License Fees	200	384	320	320	
11100	Liquor/Tobacco License Fees	185	185	185	185	
11300	Zoning Permit Fees	2,000	2,525	2,000	2,250	
16490	State of Vt Current Use	6,623	7,014	6,600	4,700	
17378	Delinquent Tax/Other Penalties	2,731	2,067	2,480	2,480	Offset by 20750 (Previously Penalties)
17600	Cemetery Income	-	250	-	-	
17800	Green Up Day	500	326	-	500	Offset by 26520 (Previously Community Clean Up)
18000	Assessor Education	386	-	250	-	See 2016 Legislative Wrap-Up page 6
18500	Additional Revenue (Grants/Other)	7,500	-	-	-	\$7500 offset by expense A/C 23401 (Previously Other Revenue)
	TOTAL REVENUE	40,458	33,540	32,957	34,255	
	EXPENSES					
	PAYROLL, BOARD & RELATED					
19000	Town Administrator Salary	22,880	22,543	21,434	21,863	(Previously Town Administrator (TA) Salary)
19010	Town Administrator Expenses	500	486	500	500	2015-2016 TA background check (Previously TA Expenses)
20100	Town Clerk Salary	9,288	9,288	9,428	9,617	(Previously Clerk Salary)
20200	Town Treasurer Salary	9,288	9,288	9,428	9,617	(Previously Treasurer Salary)
20201	Assistant Clerk Salary	2,000	1,077	2,500	1,000	
NEW	General Index Statutes	-	-	-	5,000	State Requirement
20750	Delinquent Tax Collector Salary	2,731	2,731	2,480	2,708	Offset by 17378
20300	Payroll Taxes	3,750	3,731	3,866	3,926	7.65% of salary
NEW	Board Stipends	-	-	-	3,400	(Previously included in Selectboard Expenses)
20400	Selectboard Expenses	2,000	1,800	3,600	200	
20560	Assessor Services	5,498	5,000	5,000	5,000	
20500	Assessor Expenses	250	185	250	-	15-16 New property photos for lister files
20560	Planning Commission Expenses	2,000	-	2,950	1,000	Brandy Saxton - Place Sense

Town of St. George
FY 2017-2018 General Fund Budget

		FY 2015-2016	FY 2015-2016	FY 2016-2017	FY 2017-2018	NOTES
		Budget	Actual	Budget	Proposed	
20570	Development Review Board Expenses	720	-	200	225	
20900	Meeting Minutes	2,800	968	2,500	1,800	(Previously Secretarial)
NEW	All Boards Annual Meeting	-	-	-	325	
20590	Cemetery Commission Expenses	500	-	500	400	
20700	Animal Control Expenses	500	-	500	300	
20800	Zoning Administrator Salary	3,671	4,669	3,727	5,700	
20810	Zoning Administrator Expenses	778	569	345	450	Mileage based on IRS rate (Previously ZA Expenses)
20850	Road Commissioner Salary	1,800	1,350	1,827	2,000	Based on 100 hours
20860	Road Commissioner Expenses	150	130	150	150	Mileage based on IRS rate (Previously RC Expenses)
21100	Board/Staff Training	1,500	524	1,500	1,500	(Previously Training)
	TOTAL PAYROLL, BOARD & RELATED	72,604.00	64,339	72,685	76,681	
	TOWN OFFICES & RELATED					
20650	Tax Map Update/GIS Mapping/Map Imagery	-	-	-	500	CCRPC Map Imagery FY 17-18 (1x fee)
22200	Telephone	1,356	1,094	1,300	1,200	
22250	Copier Maintenance	327	600	330	330	
22350	Postage	1,100	1,109	1,300	1,200	
22365	Microfilm	350	9	350	300	
22400	Office Supplies	1,750	2,013	1,188	1,500	(Previously Supplies)
22425	Rubbish Removal	348	377	400	400	
22500	Computer and Technical Support	3,900	4,012	4,500	4,500	Supports Grand List (Previously Computer & Support)
22550	Office Furniture & Equipment	500	344	1,700	1,700	
22600	Electricity	650	843	1,200	1,200	
22650	Fuel	4,000	1,470	2,600	2,000	
22680	Accounting Services	4,000	3,000	5,000	5,000	
22800	Elections & Town Meeting	1,650	1,829	2,750	1,830	
23400	Building & Grounds Maintenance	2,000	5,885	2,400	2,400	(Previously Maintenance)**Moved \$3000 from Building Improvement to paint interior of TH
23500	Building & Grounds Improvements	3,000	3,000	3,000	3,000	(Previously Building Improvements)**Moved to Building Maintenance topaint TH interior
NEW	Building Cleaning	-	-	-	720	
NEW	Handyman/Repairs	-	-	-	500	
23650	Town Hall Mowing	1,650	1,350	2,400	2,475	Extended section of community/park area
23700	Cemetery Mowing	1,200	1,310	1,400	1,400	Includes cemetery cleanup 2x/year
24000	PACIF/Workers Comp/VERB/Other Insurance	5,185	5,082	4,800	7,578	See Appendix A (Previously insurance)
24600	Attorney Fees	11,000	11,802	11,000	10,000	
24700	Notices - Publications	1,000	381	1,100	1,200	(Previously Notices)
22510	Website Maintenance	1,940	1,944	1,945	1,800	(Previously Website)

Town of St. George

FY 2017-2018 General Fund Budget

		FY 2015-2016	FY 2015-2016	FY 2016-2017	FY 2017-2018	NOTES
		Budget	Actual	Budget	Proposed	
26520	Green Up Day	500	326	-	500	Offset by 17800 (Previously Community Clean Up)
NEW	Vault Supplies	-	-	-	600	
	TOTAL TOWN OFFICES & RELATED	47,406	47,454	50,663	53,833	
	TOWN CENTER ASSOCIATION					
22605	Electricity	1,170	404	750	800	
22625	Water Testing	1,000	1,159	881	1,100	
23401	Maintenance	8,925	120	650	200	\$7,500 offset by revenue A/C 18500
23403	Septic	500	499	500	500	
24500	Town Center Insurance - Pumphouse	600	566	575	600	(Previously Insurance)
	TOTAL TOWN CENTER ASSOCIATION	12,195	2,748	3,356	3,200	
	DUES AND ASSESSMENTS					
26510	Chittenden County Regional Planning	785	808	808	800	
26530	Chittenden County Treasurer	2,997	3,470	3,290	3,200	
26540	Lake Iroquois Recreational District	125	125	125	120	
26580	Vt League of Cities & Towns	1,500	1,546	1,623	1,704	
	TOTAL DUES AND ASSESSMENTS	5,407	5,949	5,846	5,824	
	DONATIONS					
26550	Age Well	600	600	600	600	(Previously Champlain Valley Agency on Aging)
26590	Vt Center for Independent Living	100	100	100	100	
26850	Visiting Nurse Association	1,188	1,188	1,224	1,224	
26860	Committee on Temporary Shelter	500	500	500	500	
26870	Greater Burlington Industrial Corporation	150	150	150	150	
26871	Hinesburg Community Resource Center	1,000	1,000	1,000	1,000	
26875	Steps to End Domestic Violence	200	200	250	250	(Previously Women Helping Battered Women)
26890	Dorothy Alling Library	4,000	4,000	4,000	4,000	
26892	Youth Program	5,159	5,159	10,000	10,000	
27302	Chittenden Unit for Special Investigations	1,000	1,000	1,018	1,018	
26535	Front Porch Forum	-	-	120	120	
26895	St. George Historic & Conservation Trust	4,841	4,841	3,160	3,160	
26501	American Red Cross	-	-	250	250	(Previously Red Cross)
	TOTAL DONATIONS	18,738	18,738	22,372	22,372	

Town of St. George
FY 2017-2018 General Fund Budget

		FY 2015-2016 Budget	FY 2015-2016 Actual	FY 2016-2017 Budget	FY 2017-2018 Proposed	NOTES
	FIRE RESCUE & POLICE SERVICES					
27100	Hinesburg Fire & Rescue	29,500	26,773	29,500	29,500	
27370	Police Services	4,500	2,493	4,500	4,500	
	TOTAL FIRE RESCUE & POLICE SERVICES	34,000	29,266	34,000	34,000	
	ROADS & RELATED					
27400	Signage	1,000	818	1,000	1,000	
27500	Road Maintenance	26,500	12,284	25,000	18,665	
27501	Street Sign Upgrades	2,500	2,872	2,500	2,500	Fed compliance 3-5 year project (Previously Sign Replacement)
27700	Plowing & Sanding	25,000	9,882	25,000	20,000	
	TOTAL ROADS & RELATED	55,000	25,856	53,500	42,165	
22450	ADDITIONAL EXPENSES	800	373	1,220	1,200	(Previously Miscellaneous)
29000	CONTINGENCY	5,000	-	3,000	5,000	
	TOTAL GENERAL FUND EXPENSES	251,150	194,723	246,642	244,275	
	NET INCOME (loss)	(210,692)	(161,183)	(213,685)	(210,020)	
	CAPITAL IMPROVEMENT PROGRAM BUDGET					See Capital Improvement Program FY 2017-2018
NEW	Capital Improvement Program Revenue				36,350	Use of prior General Fund Balance
NEW	Generator	-	-	-	8,000	Plan to purchase in 2017
NEW	Stormwater Permit Improvements	-	-	-	1,000	Annually - New - State Mandated
NEW	Photocopier	-	-	-	1,000	5 year plan
NEW	Willow Brook Lane Upgrade	-	-	-	26,350	Subject to Grant Approval
	TOTAL CAPITAL IMPROVEMENT PROGRAM	-	-	-	36,350	Offset by Capital improvement Revenue

Appendix A

Additional Notes

Town of St. George General Fund FY 2017-2018 Budget

24000 Insurance

	FY 2015-2016 Actuals	FY 2016-2017 Budget	FY 2017-2018 Proposed
Insurance Claims	300	0	0
Workers' Comp	210	210	211
Distribution credit	0	(198)	(119)
Property & Casualty Intermunicipal Fund (PACIF)	4,620	4,689	3,916
VLCT VERB (Unemployment Insurance Program)	265	231	270
Employee Health Insurance	-	-	3,300
Other	0	78	90
Total Insurance	5395	5010	7,668

24600 Attorney Fees

	FY 2015-2016 Actuals	FY 2016-2017 Budget	FY 2017-2018 Proposed
General Municipal	4,000	3,480	2850
Schoolhouse Place	4,000	4,320	0
Solar Installation	3,000	3,200	0
Vermont Gas	0	0	0
Town Center Water System	0	0	0
Goose Creek/Winterbottom Road Discontinuance	0	0	7150
Total Attorney Fees	11,000	11,000	10,000

TOWN OF ST GEORGE
CAPITAL IMPROVEMENT PROGRAM • FISCAL YEARS 2018-2023
SUMMARY

1. Project Costs:

	Projects	2018	2019	2020	2021	2022	2023
1	Barber Rd		18,000				
2	Stormwater Permit Improvements	1,000	1,000	1,000	12,000		
3	Willow Brook Lane	26,350					
4	Natural Gas Burner		4,800				
5	Photocopier	1,000	1,000	1,000	1,000	1,000	1,000
6	Generator	8,000					
	Grand Total by Year	36,350	24,800	2,000	13,000	1,000	1,000

2. Proposed Funding Sources:

	2018	2019	2020	2021	2022	2023
General Fund						
Stormwater Permit Improvements	1,000	1,000	1,000	2,000		
Natural Gas Burner		4,800		4,000		
Photocopier	1,000	1,000	1,000	1,000	1,000	1,000
State Grant						
Stormwater Permit Improvements				10,000 (3)		
Willow Brook Lane Generator	21,080 (2) 4,000 (3)					
Federal Grant						
Sinking Fund						
Willow Brook Lane Generator	5,270 (2) 4,000 (3)					
Other						
Barber Rd		18,000				
Total	36,350	24,800	2,000	17,000	1,000	1,000

(1) Town Highway Class 2 Roadway Program (VTrans)

(2) Vermont Better Backroads (VTrans)/Road Maintenance; Sinking Fund Balance FYE June 30, 2016 \$23,392.68

(3) State Grant is Division of Emergency Management & Homeland Security; Building Improvement Sinking Fund Balance FYE June 30, 2016 \$3,944

**TOWN OF ST. GEORGE
2016 ANNUAL TOWN MEETING
ST GEORGE RED SCHOOLHOUSE
MARCH 1, 2016**

SELECTBOARD: Wayne Ring, Jeff Pillsbury, Nina Friscia, Henry Bowen. (Charles Scott was absent.)

MODERATOR: Steve Faust.

Steve Faust called the St. George 2016 Annual Town Meeting to order at 6 PM and read the meeting warning.

Article 1. To elect a Moderator

MOTION by Phil Gingrow, SECOND by Kelly Bowen, to nominate Steve Faust as Moderator. There were no other nominations.

VOTING ON ARTICLE 1: unanimous; motion carried. Article 1 is passed.

Steve Faust is Moderator.

LEGISLATIVE UPDATE

Senator Ginny Lyons, Senator Michael Sirokin, and Representative Joan Lenes encouraged the public to contact them at any time to discuss issues/concerns. An update was given on legislative activity on Act 46 (consolidation), education spending caps, opiate addiction/treatment programs, improvement of connections between health care services and integration of community support services, giving more voice to towns through town plans/ordinances or having a citizen advocate involved with siting energy facilities (solar, wind, telecommunications, natural gas lines). Copies of the legislative newsletter and the Doyle survey were provided.

Article 2. To elect a Selectperson for a three year term that expires in 2019

MOTION by Nina Friscia, SECOND by Caroline Jalbert, to nominate Henry Bowen to the Selectboard for a three year term that expires in 2019. There were no other nominations.

VOTING ON ARTICLE 2: The clerk was instructed to cast one ballot for Henry Bowen as a member of the Selectboard for a three year term that expires in 2019. Article 2 is passed.

Henry Bowen is elected to the Selectboard for a three year term expiring in 2019.

Article 3. To elect a Selectperson for a two year term that expires in 2018

MOTION by Nina Friscia, SECOND by Caroline Jalbert, to nominate Wayne Ring to the Selectboard for a two year term that expires in 2018. There were no other nominations.

VOTING ON ARTICLE 3: The clerk was instructed to cast one ballot for Wayne Ring as a member of the Selectboard for a two year term that expires in 2018. Article 3 is passed.

Wayne Ring is elected to the Selectboard for a two year term expiring in 2018.

Article 4. To elect a Cemetery Commissioner for a term of three years that expires in 2019

MOTION by Nina Friscia, **SECOND** by Caroline Jalbert, to nominate Brian Vaughan as Cemetery Commissioner for a term of three years that expires in 2019.

There were no other nominations.

VOTING ON ARTICLE 4: unanimous; motion carried. Article 4 is passed.

Brian Vaughan is elected to the Cemetery Commission for a term of three years expiring in 2019.

Article 5. To elect a Lister to finish two years of a three year term that expires in 2018

MOTION by Connie Kendall, **SECOND** by Kelly Bowen, to nominate Sarah Tischler as Lister to finish two years of a three year term that expires in 2018. There were no other nominations.

VOTING ON ARTICLE 5: The clerk was instructed to cast one ballot for Sarah Tischler as Lister to finish two years of a three year term that expires in 2018.

Article 5 is passed.

Sarah Tischler is elected as a Lister to finish two years of a three year term that expires in 2018.

Article 6. To elect a Lister for a three year term that expires in 2019

MOTION by Mary Alice Favro, **SECOND** by Caroline Jalbert, to nominate Bill Hickson as Lister for a three year term that expires in 2019. There were no other nominations.

VOTING ON ARTICLE 6: The clerk was instructed to cast a single ballot for Bill Hickson as Lister for a three year term that expires in 2019. Article 6 is passed.

Bill Hickson is Lister for a three year term that expires in 2019.

Article 7. To elect an Auditor to finish two years of a three year term that expires in 2018

MOTION by Caroline Matte, **SECOND** by Caroline Jalbert, to nominate Joan Landon as Auditor to finish two years of a three year term that expires in 2018.

There were no other nominations.

VOTING ON ARTICLE 7: The clerk was instructed to cast one ballot for Joan Landon as Auditor to finish two years of a three year term that expires in 2018.

Article 7 is passed.

Joan Landon is Auditor to finish two years of a three year term that expires in 2018.

MOTION by Phil Gingrow, SECOND by Phil Beliveau, to recess the 2016 Town Meeting to convene the 2016 School Meeting. VOTING: unanimous; motion carried.

Town Meeting was recessed at 6:40 PM and reconvened at 7:26 PM.

Article 8. To elect an Auditor for a three year term that expires on 2019

There were no nominations. The position will be held open.

Article 9. To authorize the Selectboard to appoint a Collector of Delinquent Taxes

MOTION by Phil Gingrow, SECOND by Mary Alice Favro, to approve Article 9 as read.

DISCUSSION: None.

VOTING ON ARTICLE 9: unanimous; motion carried. Article 9 is passed.

Article 10. To authorize the Town Clerk to approve additions to the voter checklist pursuant to Title 17, Vermont Statutes Annotated, Section 21 44 (b)

MOTION by Phil Beliveau, SECOND by Phil Gingrow, to approve Article 10 as read.

DISCUSSION: None.

VOTING ON ARTICLE 10: unanimous; motion carried. Article 10 is passed.

Article 11. To authorize collection of personal and real estate taxes as provided by law and as set forth below:

- a. Taxes to be collected one-half on October 1, 2016 and the remaining one-half of balance on April 1, 2017.**
- b. Interest to be charged on unpaid taxes at the rate of one percent (1%) per month (or fraction thereof) for the first three months and one and one-half percent (1.5%) per month for late payments more than three months from due date.**
- c. In addition to interest, a penalty of eight percent (8%) of the tax bill shall be imposed for any late payment. A postmark date of April 1 and October 1 is acceptable as on-time payment of taxes. Taxpayers are responsible for ensuring taxes are paid from mortgage escrow accounts.**
- d. A service charge of Twenty Five dollars (\$25) will be assessed for checks returned for insufficient funds.**

MOTION by Phil Gingrow, SECOND by Lori Ring, to approve Article 11 with correction to subsection (d) to read: “....checks returned for insufficient funds”.

VOTING ON ARTICLE 11: unanimous; motion carried. Article 11 is passed.

Article 12. To authorize the imposition of property taxes necessary to raise the funds to satisfy the town budget as warned or as may be amended at Town Meeting

MOTION by Phil Gingrow, SECOND by Caroline Jalbert, to approve Article 12 as read.

DISCUSSION: The following items were mentioned/discussed:

- **Donation to the Vermont Historic Conservation Trust Fund to finish the work at the schoolhouse.**

- Funding for maintenance (repairs) and building improvements (new items).
- The use of microfilm for the land records.
- Including an itemized fire/rescue/police report in the annual town report.
- Sinking fund line item used to plow/maintain two dead-end private roads, but can be used to cover other items.
- Green Up Day reminder is charged to the postage line item in the budget.
- Town general fund contains restricted funds and uncommitted funds. A percentage of the fund balance is held as a cushion for unforeseen expenses.

VOTING ON ARTICLE 12: unanimous; motion carried. Article 12 is passed.

Article 13. To transact any other business properly brought before the meeting

- Paving on Oak Hill Road and the new town signs are great.
- Well wishes for a speedy recovery were sent to Charles Scott.
- Members are needed on the Development Review Board and Planning Commission. Rewrite of the town plan is due in 2017. A development application for the town center is currently being reviewed by the DRB.
- A sign on the pavilion will be posted noting the donors.
- Thanks to the schoolhouse team for renovating the schoolhouse.

ADJOURNMENT

MOTION by Phil Beliveau, SECOND by Mary Alice Favro, to close the 2016 St. George town meeting. VOTING: unanimous; motion carried.

The St. George 2016 Annual Town Meeting was adjourned at 8:17 PM.

Minutes respectfully submitted by M.R.Riordan, Recording Secretary.

TOWN OF ST. GEORGE, VERMONT
COMPILATION REPORT AND FINANCIAL STATEMENTS
TABLE OF CONTENTS
JUNE 30, 2016

	Page #
INDEPENDENT ACCOUNTANT'S COMPILATION REPORT	1 - 2
BASIC FINANCIAL STATEMENTS	
GOVERNMENT-WIDE FINANCIAL STATEMENTS	
Statement of Net Position	Exhibit A 3
Statement of Activities	Exhibit B 4
FUND FINANCIAL STATEMENTS	
Balance Sheet – Governmental Funds	Exhibit C 5
Reconciliation of the Governmental Funds Balance Sheet to the Statement of Net Position	Exhibit D 6
Statement of Revenues, Expenditures and Changes in Fund Balances - Governmental Funds	Exhibit E 7
Reconciliation of the Governmental Funds Statement of Revenues, Expenditures and Changes in Fund Balances to the Statement of Activities	Exhibit F 8
SUPPLEMENTARY INFORMATION	
Statement of Revenues, Expenditures and Change In Fund Balance Compared to Budget – General Fund	Schedule 1 9 - 11

FOTHERGILL SEGALE & VALLEY

Certified Public Accountants



John E. (Jeff) Fothergill, CPA
Michael L. Segale, CPA
Sheila R. Valley, CPA
Teresa H. Kajenski, CPA
Donald J. Murray, CPA

INDEPENDENT ACCOUNTANT'S COMPILATION REPORT

To the Selectboard Members
Town of St. George, Vermont
St. George, Vermont

Management is responsible for the accompanying financial statements of the governmental activities and each major fund of the Town of St. George, Vermont as of and for the year ended June 30, 2016, which collectively comprise the Town's basic financial statements as listed in the Table of Contents, in accordance with accounting principles generally accepted in the United States of America. We have performed a compilation engagement in accordance with Statements on Standards for Accounting and Review Services promulgated by the Accounting and Review Services Committee of the AICPA. We did not audit or review the financial statements nor were we required to perform any procedures to verify the accuracy or completeness of the information provided by management. Accordingly, we do not express an opinion, a conclusion, nor provide any form of assurance on these financial statements.

Management has elected not to record property and equipment as assets in governmental activities. Generally accepted accounting principles require that property and equipment be disclosed in governmental activities. The amount by which this departure would affect the assets of the governmental activities is not reasonably determinable.

Management has elected to omit substantially all of the disclosures required by accounting principles generally accepted in the United States of America. If the omitted disclosures were included in the financial statements, they might influence the user's conclusions about the Town's financial position, results of operations, and cash flows. Accordingly, the financial statements are not designed for those who are not informed about such matters.

Management has omitted the management's discussion and analysis that accounting principles generally accepted in the United States of America require to be presented to supplement the basic financial statements. Such missing information, although not a part of the basic financial statements, is required by the Governmental Accounting Standards Board, who considers it to be an essential part of financial reporting and for placing the basic financial statements in an appropriate operational, economic, or historical context.

Accounting principles generally accepted in the United States of America require that the budgetary comparison information on Schedule 1, be presented to supplement the basic financial statements. Such information, although not a part of the basic financial statements, is required by the Governmental Accounting Standards Board who considers it to be an essential part of financial reporting and for placing the basic financial statements in an appropriate operational, economic, or historical context. This information is the representation of management. This information was subject to our compilation engagement; however, we have not audited or reviewed the required supplementary information, and accordingly, do not express an opinion, a conclusion, nor provide any form of assurance on such information.

Respectfully submitted,

Fothergill Segale & Valley CPAs
FOTHERGILL SEGALE & VALLEY, CPAs
Montpelier, Vermont
Vermont Public Accountancy License #110

September 16, 2016

STATEMENT OF NET POSITION

JUNE 30, 2016

	Governmental Activities	
ASSETS		
Cash	\$ 258,644	
Certificate of deposit	67,335	
Accounts receivable	4,185	
Delinquent taxes receivable	<u>22,783</u>	
Total assets		352,947
LIABILITIES		
Accounts payable	<u>10,648</u>	
Total liabilities		<u>10,648</u>
NET POSITION		
Restricted	31,972	
Unrestricted	<u>310,327</u>	
Total net position		<u>\$ 342,299</u>

STATEMENT OF ACTIVITIES

YEAR ENDED JUNE 30, 2016

<u>Functions/Programs</u>	<u>Expenses</u>	<u>Charges for Services</u>	<u>Operating Grants and Contributions</u>	<u>Net (Expense) Revenue and Change in Net Position</u>
Governmental Activities:				
General government	\$ 113,869	\$ 15,032	\$ 10,197	\$ (88,640)
Road maintenance	25,856	0	3,680	(22,176)
Fire and rescue	29,266	0	0	(29,266)
Assessments	20,028	0	0	(20,028)
Youth program	5,159	0	0	(5,159)
Total governmental activities	<u>\$ 194,178</u>	<u>\$ 15,032</u>	<u>\$ 13,877</u>	<u>(165,269)</u>
General Revenues				
Property taxes				217,384
Earnings on investments				652
Miscellaneous				<u>1,270</u>
Total general revenues				<u>219,306</u>
Change in net position				54,037
Net position - July 1, 2015				<u>288,262</u>
Net position - June 30, 2016				<u>\$ 342,299</u>

See Independent Accountant's Compilation Report.

BALANCE SHEET

GOVERNMENTAL FUNDS

JUNE 30, 2016

	Major Funds		Totals
	General Fund	Capital Projects Fund	
ASSETS			
Cash	\$ 206,599	\$ 52,045	\$ 258,644
Certificate of deposit	0	67,335	67,335
Accounts receivable	4,185	0	4,185
Delinquent taxes receivable	22,783	0	22,783
Due from General Fund	0	6,500	6,500
Total assets	<u>\$ 233,567</u>	<u>\$ 125,880</u>	<u>\$ 359,447</u>
LIABILITIES, DEFERRED INFLOWS OF RESOURCES AND FUND BALANCES			
LIABILITIES			
Accounts payable	\$ 10,648	\$ 0	\$ 10,648
Due to Capital Projects Fund	6,500	0	6,500
Total liabilities	<u>17,148</u>	<u>0</u>	<u>17,148</u>
DEFERRED INFLOWS OF RESOURCES			
Unavailable revenue - property taxes	<u>19,564</u>	<u>0</u>	<u>19,564</u>
FUND BALANCES			
Restricted:			
Reappraisal	31,972	0	31,972
Committed:			
Capital improvements	0	125,880	125,880
Building improvements	3,869	0	3,869
Road maintenance	23,393	0	23,393
Plowing/sanding	24,100	0	24,100
Unassigned	113,521	0	113,521
Total fund balances	<u>196,855</u>	<u>125,880</u>	<u>322,735</u>
Total liabilities, deferred inflows of resources and fund balances	<u>\$ 233,567</u>	<u>\$ 125,880</u>	<u>\$ 359,447</u>

TOWN OF ST. GEORGE, VERMONT
RECONCILIATION OF THE GOVERNMENTAL FUNDS
BALANCE SHEET TO THE STATEMENT OF NET POSITION

EXHIBIT D

JUNE 30, 2016

TOTAL FUND BALANCES - GOVERNMENTAL FUNDS	\$ 322,735
--	------------

Amounts reported for governmental activities in the
statement of net position are different because:

Unavailable property taxes are recognized on an accrual basis in the statement of net position, not the modified accrual basis.	<u>19,564</u>
--	---------------

TOTAL NET POSITION - GOVERNMENTAL ACTIVITIES	<u><u>\$ 342,299</u></u>
--	--------------------------

See Independent Accountant's Compilation Report.

STATEMENT OF REVENUES, EXPENDITURES
AND CHANGES IN FUND BALANCES

GOVERNMENTAL FUNDS

YEAR ENDED JUNE 30, 2016

	Major Funds		Totals
	General Fund	Capital Projects Fund	
REVENUES			
Property taxes	\$ 210,872	\$ 0	\$ 210,872
Land use	7,014	0	7,014
Intergovernmental	6,863	0	6,863
Licenses, fees and permits	15,032	0	15,032
Interest and penalties	4,545	0	4,545
Interest income	365	287	652
Miscellaneous income	270	1,000	1,270
Total revenues	<u>244,961</u>	<u>1,287</u>	<u>246,248</u>
EXPENDITURES			
Current:			
General government	113,869	0	113,869
Fire and rescue	29,266	0	29,266
Road maintenance	25,856	0	25,856
Dues and assessments	20,028	0	20,028
Youth program	5,159	0	5,159
Total expenditures	<u>194,178</u>	<u>0</u>	<u>194,178</u>
NET CHANGE IN FUND BALANCES	50,783	1,287	52,070
FUND BALANCES - JULY 1, 2015	<u>146,072</u>	<u>124,593</u>	<u>270,665</u>
FUND BALANCES - JUNE 30, 2016	<u>\$ 196,855</u>	<u>\$ 125,880</u>	<u>\$ 322,735</u>

TOWN OF ST. GEORGE, VERMONT
RECONCILIATION OF THE GOVERNMENTAL FUNDS STATEMENT
OF REVENUES, EXPENDITURES AND CHANGES IN FUND BALANCES
TO THE STATEMENT OF ACTIVITIES
YEAR ENDED JUNE 30, 2016

TOTAL NET CHANGE IN FUND BALANCES - GOVERNMENTAL FUNDS	\$	52,070
--	----	--------

Amounts reported for governmental activities in the statement of
activities are different because:

Some property taxes will not be collected for several months after
the Town's year end; they are not considered "available" revenues
in the governmental funds.

1,967

CHANGE IN NET POSITION OF GOVERNMENTAL ACTIVITIES

\$	54,037
----	--------

See Independent Accountant's Compilation Report.

TOWN OF ST. GEORGE, VERMONT
STATEMENT OF REVENUES, EXPENDITURES AND
CHANGE IN FUND BALANCE COMPARED TO BUDGET
GENERAL FUND
YEAR ENDED JUNE 30, 2016

SCHEDULE 1

	Original and Final Budget	Actual	Variance Favorable (Unfavorable)
REVENUES			
Property taxes	\$ 210,692	\$ 210,872	\$ 180
State - Land use	6,623	7,014	391
Intergovernmental	7,436	6,863	(573)
Town Clerk fees, licenses and permits	15,130	15,032	(98)
Interest and penalties on delinquent taxes	2,731	4,545	1,814
Interest income	250	365	115
Miscellaneous income	560	270	(290)
Total revenues	<u>243,422</u>	<u>244,961</u>	<u>1,539</u>
EXPENDITURES			
Current:			
General government			
Town officers			
Town Clerk	9,288	9,288	0
Treasurer	9,288	9,288	0
Town Administrator	23,380	23,029	351
Trainee/Assistant	2,000	1,077	923
Payroll taxes	3,750	5,446	(1,696)
Delinquent tax collector	2,731	2,731	0
Selectboard expenses	2,000	1,800	200
Zoning administrator	4,449	5,238	(789)
Road commissioner	1,950	1,480	470
Planning commission	2,000	0	2,000
DRB expenses	720	0	720
Cemetery commission expenses	500	0	500
Animal control expenses	500	0	500
Secretarial	2,800	968	1,832
Training	1,500	524	976
Total town officers	<u>66,856</u>	<u>60,869</u>	<u>5,987</u>
Town office			
Telephone	1,356	1,094	262
Copier lease/maintenance	327	600	(273)
Professional services	4,000	3,000	1,000
Postage	1,100	1,109	(9)
Microfilm	350	9	341
Supplies	1,750	2,013	(263)
Rubbish removal	348	377	(29)
Miscellaneous	2,740	2,318	422
Computer and support	3,900	4,012	(112)
Office furniture/equipment	500	344	156
Electricity	650	843	(193)
Fuel and furnace repair	4,000	1,470	2,530

See Independent Accountant's Compilation Report.

TOWN OF ST. GEORGE, VERMONT
STATEMENT OF REVENUES, EXPENDITURES AND
CHANGE IN FUND BALANCE COMPARED TO BUDGET
GENERAL FUND
YEAR ENDED JUNE 30, 2016

SCHEDULE 1

	Original and Final Budget	Actual	Variance Favorable (Unfavorable)
Building maintenance	2,000	5,885	(3,885)
Building improvements	3,000	0	3,000
Mowing/landscaping	1,650	1,350	300
Mowing - cemetery	1,200	1,310	(110)
Total town office	28,871	25,734	3,137
Town Center			
Water testing	1,000	1,159	(159)
Maintenance	11,195	1,589	9,606
Total town center	12,195	2,748	9,447
Insurance	5,185	5,082	103
Legal			
Attorney fees	11,000	11,802	(802)
Notices	1,000	381	619
Total legal	12,000	12,183	(183)
Listers			
Lister expenses	250	424	(174)
Lister services	5,498	5,000	498
Total listers	5,748	5,424	324
Election & Town Meeting - Printing	1,650	1,829	(179)
Total general government	132,505	113,869	18,636
Youth programs	10,000	5,159	4,841
Dues, assessments and donations			
CCRP/CCMPO	785	808	(23)
County treasurer	2,997	3,470	(473)
Lake Iroquois	125	125	0
Office on Aging	600	600	0
VLCT	1,500	1,546	(46)
VCIL	100	100	0
VNA	1,188	1,188	0
COTS	500	500	0
GBIC	150	150	0
Hinesburg Food Shelf	1,000	1,000	0
Women Helping Battered Women	200	200	0
Carpenter-Carse Library	500	500	0
Dorothy Alling Library	4,000	4,000	0
St. George Historic & Cons Turst	0	4,841	(4,841)
Chittenden Unit for Special Investigation	1,000	1,000	0
Total dues and assessments	14,645	20,028	(5,383)

See Independent Accountant's Compilation Report.

TOWN OF ST. GEORGE, VERMONT
STATEMENT OF REVENUES, EXPENDITURES AND
CHANGE IN FUND BALANCE COMPARED TO BUDGET
GENERAL FUND
YEAR ENDED JUNE 30, 2016

SCHEDULE 1

	Original and Final Budget	Actual	Variance Favorable (Unfavorable)
Fire and Rescue			
Hinesburg Fire Department	29,500	26,773	2,727
Police services	4,500	2,493	2,007
Total fire and rescue	<u>34,000</u>	<u>29,266</u>	<u>4,734</u>
Road maintenance			
Signage	1,000	818	182
Sign replacement	2,500	2,872	(372)
Road maintenance	26,500	12,284	14,216
Plowing and sanding	25,000	9,882	15,118
Total road maintenance	<u>55,000</u>	<u>25,856</u>	<u>29,144</u>
Contingency	5,000	0	5,000
Total expenditures	<u>251,150</u>	<u>194,178</u>	<u>51,972</u>
NET CHANGE IN FUND BALANCE	<u>\$ (7,728)</u>	50,783	<u>\$ 53,511</u>
FUND BALANCE - JULY 1, 2015		<u>146,072</u>	
FUND BALANCE - JUNE 30, 2016		<u>\$ 196,855</u>	

**St. George Planning Commission
2016 Annual Report**

The Planning Commission meets the fourth Tuesday of each month at 7pm

The Planning Commission spent much of 2016 engaged in flood- and erosion-related amendments to both the Town Plan and Land Use Regulations.

Firstly, the PC and Selectboard collaborated with the Chittenden County Regional Planning Commission to improve the flood resiliency language in our Town Plan and to update our All-Hazards Mitigation Plan (AHMP). By incorporating certain required provisions, the town becomes eligible for Emergency Relief & Assistance Funds, thereby reducing the potential liability of taxpayers for flood-damaged roads and other publicly owned property. Furthermore, adoption of the AHMP makes the town eligible for grants to cover culvert repair, protection of existing flood-endangered structures, et cetera.

Secondly, the PC worked with the VT Agency of Natural Resources and FEMA to institute floodplain regulations as part of our Land Use Regulations in order to minimize our insurance rates and maximize our state and federal assistance in the event of a flood-related emergency. Fortunately for St. George, our exposure to flood and erosion damage is very limited. Therefore, we worked (and continue to work) to pare down the required flood regulations to those sections that are applicable to the few conditions within town. At the time of this writing we await final approval from FEMA headquarters for our proposed language and, subsequently, maximum state and federal protection.

The PC in 2016 also experienced the resignation of long-time member Connie Kendall. For more than a decade Connie has championed the causes of Lake Iroquois, protection of our natural resources, and responsible development of our Village Center. Additionally, Connie worked with countless others to realize the SG town Pavilion, the Community Gardens, and our town park. For her tremendous and selfless volunteer efforts we are thrilled that, as homage to her, our town park will forever be known as “Connie’s Park”. We will miss you dearly, Connie, thank you!

Finally, once again I make my annual pitch for additional PC members. The Planning Commission is intended to be a five-member board but we presently have only four. If you are interested in becoming a member and helping to guide our town’s future, please contact me at your convenience.

Thanks to all for your support throughout the year, we hope to see you in 2017!

Respectfully submitted by
Scott Baker, Chair

Present Planning Commission Members:

Scott Baker, Chair
Lisa Dillon Beliveau
Nina Friscia
Maggie Kerrin

St. George Development Review Board 2016 Annual Report

The Development Review Board meets the second Wednesday of each month at 7pm

The Development Review Board engaged in three public hearings during 2016. In addition to hearing an appeal of a decision by the zoning administrator, the Board approved a modest expansion of the existing Breezy Valley Storage facility. The bulk of our time, however, was attributed to the continuation of the Schoolhouse Place application for a mixed-use project proposed for the Village Center. Following years of meetings that commenced in 2013, the application was ultimately withdrawn due to a lack of investment opportunities. I would like to thank the applicant, Rad Romeyn, for his dedication to the project and for his conscientious participation in the public process.

Perhaps the most notable event for the Board in 2016 was the resignation of long-time member Connie Kendall. Connie has been an invaluable contributor to the Board providing wonderful perspective, scrutiny of details, significant institutional memory, diligent research, and fair and reasonable judgment. After more than a decade of tireless volunteer service to our town, Connie will be dearly missed; we wish her and her family only the best in her future endeavors. Thank you, Connie!

Following Connie's departure the Board was fortunate to welcome two new members, Ken Pinkham and Tom Juiffre. We are excited to commence the new year with new members, helping to comprise a broader and more complete Board.

Once again we would like to extend our gratitude to our wonderful zoning administrator, Ed Hanson, for his expert guidance and uplifting humor. Ed's experience and perspective are most welcome in assisting both applicants and the DRB.

The members of the Development Review Board are volunteers and residents committed to the community in which we reside. We are honored to serve the town in this capacity. We welcome all residents at our meetings and input is always appreciated. Please do not hesitate to contact us at drb@stgeorgevt.com.

Respectfully submitted by
Scott Baker, Chair

Present Development Review Board Members:

Scott Baker, Chair
Andrei Leontiev, Vice Chair
Corey Kennedy
Ken Pinkham
Tom Juiffre

TOWN OF SAINT GEORGE YEAR-END ZONING REPORT CALENDAR YEAR 2016

The numbers and the distribution by type of the zoning applications that were received and processed in calendar year (CY) 2016 can be summarized as follows:

<i>New dwellings</i>	
<i>Permanent/seasonal houses</i>	2
<i>Accessory dwellings/apartments</i>	2
<i>Mobile homes</i>	0
<i>Replacements</i>	1
<i>Renovations/additions</i>	
<i>Conversions (conditional uses)</i>	0
<i>Major additions (occupiable living space)</i>	2
<i>Minor additions (external additions, porches, decks)</i>	2
<i>Accessory outbuildings</i>	0
<i>Exempt agricultural outbuildings</i>	0
<i>Ponds/dams/other land development</i>	0
<i>Access curb cuts/roads/drives</i>	0
<i>Temporary uses</i>	0
<i>Signs/fences</i>	0
<i>Subdivisions</i>	
<i>Minor (< 4 lots)</i>	0
<i>Major (≥ 4 lots)</i>	0
<i>Resubdivisions (boundary adjustments)</i>	0
<i>Planned unit developments (PUDs)</i>	2
<i>Major projects (commercial/industrial)</i>	0
<i>Renewals of permit</i>	0
<i>Conditional uses</i>	0
<i>Certificates of compliance</i>	1
<i>Notices of Violation</i>	1
<i>Development Review Board hearing applications</i>	
<i>Conditional uses</i>	1
<i>Variances</i>	0
<i>Waivers</i>	0
<i>Appeals</i>	1
<i>Subdivisions/PUDs</i>	0
<i>Site plan review</i>	0

Twelve zoning applications were received and processed during the year, including **three** hearings that were applied for and convened before the Development Review Board (DRB) in that period. **Six zoning permits** were issued during the calendar year from 1 January 2016 to 31 December 2016. Administration of these activities involved a total invoiced cost of **\$5,474.69** in man-hours and expenses for the Administrative Officer's services, charged against a

total of **\$2,400.00** in permit application fees that were assessed and collected, resulting in a net direct cost of administration of **\$3,074.69** for the calendar year.

These figures do not include the costs incurred in warning and convening hearings before the Development Review Board, nor do they include attorneys' fees, when and if the Town elects to retain their services (as, for instance, to pursue litigation in zoning violation cases before the Environmental Division of the Vermont Superior Court). For a complete summary of the Town's officially-posted zoning administration costs, please refer to the Treasurer's Report on the General Fund in the Annual Report.

Respectfully submitted,

E. W. Hanson
Administrative Officer
2 January 2017.

St. George Cemetery Commission 2016 Report

This was a quiet year...

We have had no burials or sale of rights to be buried. Prices for burial rights remain the same: \$500.00 for rights of burial in a single plot and \$125.00 for rights of burial in a plot for cremated remains. We invite people to consider purchasing rights of burial in a plot for cremated remains if they or a family member are planning on cremation. It is a wise use of our limited cemetery space and less costly for purchase. Also, we would like some stone benches in that section of the cemetery. We invite residents to consider the option of installing stone benches as memorial markers for cremated remains. These can be engraved much like a traditional head or foot stone.

This year, we will install a 911 number on a post at the main entrance. We also plan for some additional tree work to be completed. We offer thanks again to David and Susan Peet for placing flags on the graves of veterans.

Respectfully submitted,

Mary Alice Favro, Cemetery Commissioner
Ric Kalagher, Cemetery Commissioner
Brian Vaughan, Cemetery Commissioner



Green Up Day 2016

Another bright day for Green Up! Most of 2A from north to south and portions of Rt. 116 were cleaned up as well as Ayer Road. We filled 30 green bags and collected the usual amount of scrap metal and no tires. The most interesting finds were a Green Up Day poster and 3 unopened boxes of dog nail covers! Who knew they existed, let alone would appear on the side of a road?

Thanks to Hannafords for providing us with refreshments, VT Coffee Company for coffee, April Pillsbury for mailing and dumpster coordination and to Lou Provost for his truck to pick up bags. Thanks all who participated...**especially** Russ Keihl. Russ now lives in Shelburne and for the years he lived on Ayer Road, he was the first one to appear on Green Up Day having already picked up all of lower Ayer Road! It was great to have you back with us Russ! Welcome to Keeley Higgins-Painter, who recently moved to St. George and first time doing Green Up in town.

Russ Keihl
Steve Faust
Maddie Woodson
Ben Oxender
Lou Phelps

Lisa Beliveau
Grace Thompson
Maya VanderEls
Connie Kendall

Tom Rochelean
Nat VanderEls
Keeley Higgins-Painter
Mary Alice Favro

We look forward to another successful Green Up Day in 2017. Please mark your calendars! It's a great way to meet your neighbors.

Saturday, May 6, 2017
9-11:30 am
Refreshments
Meet at Town Hall

REMINDER: Green Up Day is to collect roadside trash, not your personal trash!
Bags will be at Town Office for pick-up in mid-April.

Please contact me at 578-5328 if you have particular spots you think need cleaning!

Mary Alice Favro, Green Up Day Coordinator

Auditors Report

At the 2016 Town meeting, Joan Landon was elected an auditor for the new 3-year term. Joan joined Andrei Leontiev on the auditor team of the Town of St. George. Andrei's 3-year term ends in 2017.

Continuing with the focus established in 2013, the auditor's work was conducted in the spirit of the Vermont League of Cities and Town's recommendation in their "A Comprehensive Guide for Vermont Auditors" publication to "digest financial information." When reconciling various Town's bank accounts, the auditor focused primarily on two key areas:

- Whether selected financial transactions were properly recorded;
- Identifying areas for possible improvements in accounting practices and procedures.

The auditors performed reconciliation of the Town's accounts for 12 consecutive months of the year and reviewed the authorizations of expenditures issued by the Selectboard.

Town auditors are not expected to perform the services of a professional auditor. Rather, the role of a town auditor is to:

- Ensure local officials are accountable for their expenditures of taxpayers' money;
- Review the accounts of these officials and report the findings directly to taxpayers;
- Present findings to the town's taxpayers.

Thus, the main purpose of auditor's review of bank statements was to evaluate whether there were weaknesses in internal financial controls or incidents of improper or unauthorized use of the Town's money. As of this writing, no findings of this nature were recorded.

With this understanding, in our opinion, the Town's financial records reported in this Annual Report present fairly, in all material respects, the financial position of the Town of St. George as of June 30, 2016 and the results of its operations for the year.

We would like to invite any interested person amongst town residents who would like to contribute to the financial controls of town's operations, to join the auditor team. This will help further enhance town financial controls and promote openness and transparency in town's operations.

Respectfully submitted,

Auditors of the Town of St. George

* Andrei Leontiev

* Joan Landon

St George Assessor's Report

If you have any questions about your property value, we are always available to go over your record. We want to be sure we have accurate information and that we are assessing everyone fairly compared to other like properties.

We inspect every property in town when we are doing a town-wide reappraisal. Between reappraisal years, we only inspect those properties that have changed. If you would like us to take a look at your property, we can do that at any time.

IMPORTANT-REMEMBER TO FILE YOUR HOMESTEAD DECLARATION!!

Everyone who owns and lives in their primary residence in St George must file a homestead declaration before April 15, 2017. Filing your homestead declaration late will result in a penalty.

You must file the homestead declaration even if you do not have to file Vermont income tax.

You must file the homestead declaration on time even if you get an extension for your Vermont income tax filing.

If your property crosses town boundaries and your homestead is in two towns, you must file a homestead declaration for both towns.

You can file the homestead declaration with a paper form or online on the VT.gov website. You will need last year's tax bill. On the bill you will find your Span number, which is a specific identifying number for your property, as well as the housesite information that you will be asked for.

Vermont Appraisal Company
Ted Nelson & Cecile Roy
Assessors

Friends of St. George and Williston Families 2016 Summer Camp Scholarship Program

Program Overview

For three weeks in July, the Friends of Families program provided full scholarships for eligible children from St. George and Williston to attend the Williston Summer Recreation Camp. Campers received two to three weeks tuition, transportation to and from camp, and daily lunch and snacks. All participants were in grades 3 through 9 and qualified for the school's Free and Reduced Lunch program.

With support from our local communities, we were able to achieve the main goals of the program: to bridge the gap in food security created when school-year food assistance ends, and to provide quality recreational opportunities for these children to build life skills and to interact with peers and adults in a safe environment.

Professional Staff

Kaelyn Kohlasch did a fantastic job as the new dedicated Camp Coordinator. Kaelyn was familiar with the workings of camp having been a counselor in prior years. She made sure that all children were set up for success by ensuring that they had what they needed to participate fully in the camp experience.

Rebecca Gove, WCS Teacher, coordinated all pre-camp outreach. She worked with school staff to identify children to participate in the program, and oversaw all initial communication with families.

Lunch Program

Thanks to the Williston Community Food Shelf, we stocked our pantry with healthy snacks and lunch foods. Our super-dedicated volunteers prepared snacks and lunches daily. Fifteen volunteers shopped for groceries, made sandwiches, and baked treats. Fresh fruit and veggies were provided every day, along with homemade desserts such as muffins, brownies, and cookies.

Camp Transportation

Bus transportation was offered daily both to and from the St. George Villa, Porterwood Drive, and Maple Tree Place neighborhoods.

Highlights from 2016

Venture Campers (youth entering grades 3-5) took part in field trips to Lake Iroquois, the Essex Pool and North Beach. The water slide and diving board were fan favorites at the pool, but nothing can quite compare to the snack bar at North Beach! There was also the chance to ice skate at Cairns Arena, and join a baking club to bake homemade pizza, cookies, and even make ice cream! Perler beads turned out to be a big hit at camp. The kids came up with creative ways to create emojis and iPhone apps out of beads. Campers brought home dozens of creations by the end of the summer!

Teen Venture Campers (youth entering grades 6-9) enjoyed beach days, as well as a trip to a swimming hole in Moretown. The teens really enjoyed the thrilling jump off of a 10-foot rock into the water, and took a tour of the Ben and Jerry's factory afterward.

As Kaelyn put it so well: *"Overall, this summer was another success for the Friends of St. George and Williston Families program. It was clear to see that campers had positive experiences meeting new peers and adults, and they certainly stayed busy and active! I am also pleased to share that I received many compliments from fellow counselors regarding the positive and respectful attitudes of this group of campers, making them a joy to spend time with!"*

Support

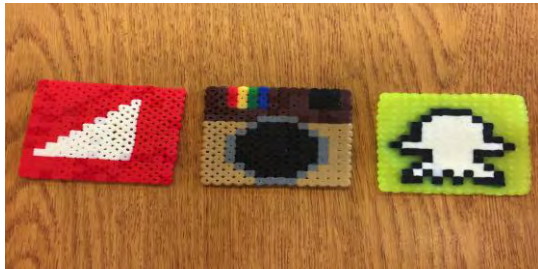
This program receives significant financial support from the local community. Thanks go to the Town of St. George for its ongoing commitment of funds as well as to the Williston Parks & Recreation Department for assisting with tuition and staffing. Additional thanks are owed the Williston School District for the use of the Mentoring Room each summer and to the Williston Federated Church for its deep commitment to this program.

Thank you to all of the following organizations for their generous financial support of our mission: the Williston Community Food Shelf, Williston Federated Church, Williston Central School (WCS) Families as Partners, and the United Church of Christ Department of Mission-VT Conference.

And, finally, many thanks for the ongoing support from our volunteer shoppers, lunch-makers and bakers, without whom this program could not happen!

Respectfully submitted,

Caroline Jalbert , Friends of Families Volunteer Coordinator
Kaelyn Kohlasch, Camp Coordinator
Rebecca Gove, Camp Outreach



ST. GEORGE TOWN PARK

News Update

While our town isn't growing by leaps and bounds, we do have some newcomers. Let me introduce you to your newly formed town park. The park consists of approximately two acres located west of the town office parking lot and south of the schoolhouse. It includes the 250th Anniversary Pavilion built in 2013 to commemorate our town's 250th Anniversary. It also includes the old baseball area and the community garden.

As we sit in the Schoolhouse, on Town Meeting Day, we can view the park through the beautiful bank of windows on the south side of the meeting room. You will notice on the Town Meeting Warning page in this report, one of the Articles gives residents the opportunity to discuss and vote on the transfer of ownership of the schoolhouse from the St. George Historic and Conservation Trust to the Town of St. George. One thing for sure, the Schoolhouse is in the perfect location to enhance the use of our park.

There continues to be plenty of potential for our town park area. Several uses and additions have been discussed; one idea is to install an old-fashioned hand pump to provide water for the community garden. It may prove to be a valuable resource for other purposes as well as it would be a source of water not relying on electricity.

An updated web page for the town park will be created this spring to allow for exchange of ideas and information gathering.

With appreciation,
Connie Kendall



St. George Community Garden

21 Barber Road, Saint George, Vermont 05495

The St. George Community Garden in its 7th season welcomed 3 new members to the Garden. We hope they enjoyed their experience and will return this next season. Mother Nature it seems cannot make up her mind and completely changed her direction from the soggy summer of 2015 to a very dry summer for 2016. Again we would like to thank Ray Barrows for donating his time and the use of his lawn tractor to fill the water barrels and Warren Rotax for using his weed whacker to keep the garden trimmed. As we move into our 8th season, we will be looking at ways to maintain the garden space, as well the upkeep and integrity of the compost bins and shoring up the fence for the raspberry bushes. Applications for the 2017 season will be available at the St George Town office in Early Spring, on our facebook.com page, or through email at St.George_Community_Garden_proj@yahoo.com.

Sincerely

Lisa Hodgkins

Volunteer Garden Coordinator



Saint George Historic & Conservation Trust

35 Barber Road

St. George, Vt. 05495

2016 Annual Report

The Board of SGH&CT has been very busy this year thanks to many generous donations from the town as well as organizations and individuals. We have been able to finish the foundation area around the schoolhouse and closed in the entire lower portion of the building for weatherproofing. We had custom storm windows installed on the original windows that still allow the beauty of the schoolhouse to shine through and still increase our energy savings.

The schoolhouse has started to see some activity and usage with the town meeting, individual groups such as the Rocky Ridge Community Women and a historical presentation by Linda Radtke and pianist. Linda sang historical songs from the 1800's after researching the history of some of the town's residents and visiting our cemetery. Ben and Jerry's provided ice cream for the event and it was a thoroughly enjoyable evening. We hope to have many more events take place in the schoolhouse in 2017.

The schoolhouse is now available for rental and includes use of the kitchen as well as the tables and chairs. We have a handicapped accessible bathroom and space for small events or group meetings. We are still looking at hosting more community events such as a movie night, after school programs and regular meetings for local groups. Information regarding rental availability is available through our website.

We have achieved our goal to move and restore the schoolhouse and we hope it provides years of enjoyment for all the residents of St. George. We are always looking for new members to help ensure that the legacy of the schoolhouse continues far into the future. If you are interested or would like more information, please contact us at www.stgeorgevtschoolhouse.org or our Facebook page at www.facebook.com/SGHCT.

Thank you for your generosity and commitment to help us achieve this goal!

The Board of Saint George Historic & Conservation Trust

CHITTENDEN SOLID WASTE DISTRICT

July 1, 2015 – June 30, 2016

CSWD is a municipality governed by a Board of Commissioners appointed by the 18 towns and cities of Chittenden County. Our mission is to reduce and manage the solid waste generated by our members.

ADMINISTRATION:

CSWD owns and oversees 10 solid waste or recycling facilities in Chittenden County for its 18 member municipalities. A Board of Commissioners, who sets policy and oversees financial matters, governs CSWD. One Commissioner is appointed by each member community.

THE BOARD OF COMMISSIONERS OFFICERS include: Chair Paul Stabler of South Burlington; Vice Chair Michelle DaVia of Westford, and Secretary/Treasurer Alan Nye of Essex. EXECUTIVE BOARD MEMBERS include Paul Stabler, of South Burlington, Michelle DaVia of Westford, Alan Nye of Essex, Craig Abrahams of Williston, and Chapin Spencer of Burlington. General Manager Tom Moreau retired in August of 2016 after twenty-one years of service. Sarah Reeves is the new CSWD General Manager.

FINANCES:

The unaudited FY16 General Fund expenditures were \$9.3 million and the revenues were \$10.4 million. This represents a \$720,000 increase in expenditures (8.4%) and a \$481,000 (4.8%) increase in revenues compared with the FY 15 General Fund operating results. Of the \$720,000 increase in expenditures for the year, approximately \$223,000 was associated with wages and benefits, as the District made small increases in staffing levels in various programs; \$253,000 was related to higher costs of sorting and handling recyclables, organics, and disposal of trash due to higher quantities of incoming materials; \$90,000 related to higher costs for materials used in compost production in conjunction with higher volumes of materials produced in FY16. The \$481,000 revenue increase for FY16 over the prior year is largely attributable to the tipping fee rates for recyclables dropped off at the Materials Recovery Facility (MRF). Effective 7/1/15, the per-ton rates increased from \$6 for In-District materials and \$11 for Out-Of-District materials to \$21 per ton for all incoming materials. This rate increase, along with an approximate 6% increase in quantity of incoming material, generated about \$616,000 more tip fee revenue for MRF operations in FY16; this was partially offset by a reduction of about \$158,000 in material sales revenue due to stagnant world-wide markets for recyclables. Also, product sales revenues at the Green Mountain Compost facility increased by about \$341,000 (81%) in FY16 over FY15, due to greater production volume and increased focus on marketing efforts.

SIGNIFICANT CHANGES/EVENTS:

In FY16 CSWD's major initiatives were: 1) a waste composition study that found that 60% of what our residents throw in the trash could be diverted from disposal through existing recycling, composting, and hazardous waste programs 2) revisions to the CSWD Solid Waste Management Ordinance, including trash disposal bans on asphalt shingles and unpainted/unstained plywood and oriented strand board 3) a new 5-year strategic plan; and 4) a nationwide search for a new General Manager. General Manager Tom Moreau retired after twenty-one years of service. Sarah Reeves was hired in August 2016.

ONGOING OPERATIONS:

DROP-OFF CENTERS located in Burlington, Essex, South Burlington, Milton, Williston, Richmond, and Hinesburg are available to District members who prefer to self-haul their trash and recyclables. Drop-Off Centers collected 3,117 tons of recyclables, an increase of 0.70% from FY15, and, 6,593 tons of household trash during FY16, a 3.79% increase from FY15.

The MATERIALS RECOVERY FACILITY in Williston is owned by CSWD and privately operated by Casella Waste Management. In FY16, 43,206 tons of recyclables were collected, sorted, baled, and shipped to markets. This represents an 8.2% increase from the previous year. The weighted average sale price for materials was \$77.18 per ton, which is a 17.6% decrease over last year's average.

The ENVIRONMENTAL DEPOT and the ROVER are CSWD's hazardous waste collection facilities for residents and businesses. In FY16, 10,135 households and 715 businesses brought in 651,723 pounds of waste that were collected and processed at these facilities. This included 83,640 pounds (8,364 gallons) of latex paint re-blended and sold as "Local Color", and 98,450 pounds (9,845 gallons) of latex paint processed for recycling in Canada.

FY16 was a good year for CSWD's COMPOST facility. Sales and tipping fees were both strong, with total revenues outperforming budgeted goals for the first time in several years. Green Mountain Compost added many new customers in FY16 and made the shift to a full time Sales and Marketing hired position. These moves coupled with some large, one-time construction related projects led to the higher than expected sales. Premium Raised Bed Mix was added to the mix mid-fiscal year and has been met with praise from current and new customers. The quantity of diverted food residuals being composted continues to climb steadily with FY16 totals coming in 20% higher than the previous year. A total of 13,118 tons of material was accepted for composting in FY16 which included 4,679 tons of diverted food residuals, 4,501 of which was traditional food scraps.

BIOSOLIDS - CSWD is in the third year of a 5-year contract with Casella Organics for sewage sludge disposal. CSWD member community sludge that is not eligible for land application is processed at the Grasslands Alkaline Stabilization Facility in Chateaugay, NY, to be treated for Beneficial Reuse as a Class A soil amendment. CSWD brokered 14,586 wet tons of sewage sludge for our member communities in FY16, which is 1.9% more material than last year. The City of South Burlington's thermo-meso anaerobic digestion, 2PAD system, generated class "A" product which was distributed to local farms for land application, beneficial reuse, through FY16. CSWD staff is analyzing options for local treatment of District member sewage sludge with a focus on removing nutrient phosphorus from member waste-water treatment plants and providing a long-term economic benefit for sewage sludge disposal as compared to current options.

MARKETING – The 2016-18 Chuck It Guide was sent out at the end of June, 2016, chock-full of information about the new waste reduction laws. Press releases, TV, radio, and print ads, and social media were used to help residents and businesses understand how to reduce waste and to inform about recycling, composting, and landfill ban changes resulting from Act 148, Act 175, and CSWD's Ordinance. We ran Customer Appreciation Days at each of our seven Drop-Off Centers in the summer of 2015, allowing us to meet residents and businesspeople and discuss what does and doesn't work, and how we can improve our services to all the towns of Chittenden County. Dealer.com sponsored our Art of Recycling project, enabling us to hire artists to turn six of CSWD's recycling roll-off containers into murals, creating a more engaging recycling experience. Two of the containers were featured in the 2016 Mardi Gras parade in Burlington, and continue to be seen on the road and at DOCs. We collaborated with neighboring solid waste entities to create a website, 802recycles.com, where anyone anywhere in the state can find the solid waste entity that serves them.

A variety of EDUCATIONAL PROGRAMS and tools were available to assist residents, schools, municipalities, organizations, businesses, and event planners to reduce and properly manage their wastes. The CSWD Hotline (872-8111); website: (www.cswd.net), e-newsletter, presentations, technical assistance, displays, workshops, facility tours, informational brochures, recycling bins and compost collectors (over 8,200 distributed), signage, discount compost bins, special event container loans, and grants (\$25,684 awarded) are part of this positive community outreach. Tens of thousands of employees, residents, students, and others were impacted by CSWD's business, school and youth, and community outreach programs.

Educational programs were complemented by the ENFORCEMENT PROGRAM with generator, hauler, and facility compliance checks and follow-ups. New procedures and policies were developed in response to CSWD Ordinance amendments and Act 148 requirements. In addition, 69 haulers, processors, scales, and transfer stations were licensed.

RESEARCH AND DEVELOPMENT efforts, which have dual goals of reducing the amount of waste generated and landfilled along with making programs more convenient and cost-effective, focused on recycling and composting incentives and collection, residential waste composition, construction and demolition debris, and markets for recyclables.

CSWD provides funding and staff time to support GREEN UP DAY efforts in Chittenden County. In May, 22.5 tons of litter, 2,599 tires, and 4 cubic yards of scrap metal were collected. CSWD covered the \$5,332 cost for recycling the tires and waived its fee on disposed litter. CSWD also contributed \$4,050 to Green Up Vermont on behalf of its member municipalities for bags, posters, and promotion.

The COMMUNITY CLEAN UP FUND helps members keep their communities clean and litter-free throughout the year. \$15,720 were used by CSWD's member municipalities.



FY2016 ANNUAL REPORT TOWN of ST. GEORGE

The Chittenden County Regional Planning Commission (CCRPC) is a political subdivision of the State created by the municipalities of Chittenden County in 1966 for the development of policies, plans and programs that address regional issues and opportunities in Chittenden County. Its vision is to be a pre-eminent, integrated regional organization that plans for healthy, vibrant communities, economic development, and efficient transportation of people and goods while improving the region's livability. The CCRPC serves as the region's federally designated metropolitan planning organization (MPO) and is responsible to all citizens of the region to ensure the implementation of the best regional and transportation plan for Chittenden County. The CCRPC also provides technical and planning assistance to its member municipalities and the Vermont Agency of Transportation (VTrans).

The CCRPC is governed by a 29-member board consisting of one representative from each of the County's 19 municipalities; transportation representatives from VTrans, Chittenden County Transportation Authority (CCTA), Federal Highway Administration (FHWA), the Federal Transit Administration (FTA), the Burlington International Airport (BIA), and a rail industry representative; and, at-large members representing the interests of agriculture; environmental conservation; business; and housing/socio-economic. The legislative body of each Chittenden County municipality selects its own representative and alternate. The full Commission selects the at-large representatives.

The CCRPC celebrated its 50th anniversary in 2016 and appreciates the continued opportunity to work with its municipal members to plan appropriately for the region's future to protect and improve the special quality of life that is shared throughout Chittenden County. In FY16, the CCRPC invested more than \$4.7 million in regional land use, transportation, emergency management, energy, natural resources, public engagement, training, and technical assistance. The program leverages nearly \$4.3 million in Federal and State investment with \$245,000 in municipal dues and another \$200,000 in local match for specific projects—a **9:1 return on investment**.

Town of St. George representatives to the CCRPC Board and other committees in FY16 were:

- CCRPC representative – Jeff Pillsbury
- CCRPC alternate – Barbara Young
- Transportation Advisory Committee (TAC) – vacant
- Planning Advisory Committee (PAC) – vacant

Specific activities the CCRPC is engaged in with the Town of St. George, as well as some of CCRPC's regional activities, are discussed in the following sections.

TOWN of ST. GEORGE ACTIVITIES

In FY2016, the CCRPC provided assistance to St. George on the following projects and initiatives:

- **Municipal Plan Development** – Completed a data update, provided a flood resilience and water quality section and completed a comprehensive review of the Town Plan. Staff also assisted with the development and review of a Municipal Planning Grant application.
- **National Flood Insurance Program Assistance** – Assisted with efforts to join the NFIP.
- **Ayer Rd Technical Assistance** – Developed a cost estimate analysis to upgrade and maintain a segment of Ayer Road from a Class IV Town Highway to a Class III.
- **VT-116/Winterbottom Rd Technical Assistance** – Collected field data and prepared an intersection sight distance memo for the Town regarding the intersection of VT116 and Winterbottom Rd.
- **Municipal Infrastructure Inventories** – CCRPC interns conducted culvert and sign inventories.

REGIONAL ACTIVITIES

- **50th anniversary** – The CCRPC celebrated its 50th anniversary throughout 2016, and hosted an event as part of its annual meeting in June, during which over 80 representatives of municipal, regional, and state government gathered to celebrate – including guest speaker Governor Peter Shumlin. CCRPC staff also developed a timeline that highlights some significant milestones, events, and other happenings throughout Chittenden County and beyond over the last 50 years. (<http://www.ccrpcvt.org/about-us/news/ccrpc-timeline/>)
- **Legislative Forum** – Hosted the 2nd annual Legislative Breakfast in December as a forum for a short, focused conversation with local legislators and municipal representatives on key issues and high interest topics important to area municipalities for the 2015-2016 legislative session, including: smart growth, water quality, and municipal shared services. (<http://www.ccrpcvt.org/event/chittenden-county-municipal-legislative-breakfast/>)
- **ECOS Plan Annual Report** – The [2015 Annual Report](#) is a summary that highlights a number of regional accomplishments, trends, and high priority actions. The ECOS Plan is the combined Regional Plan, Metropolitan Transportation Plan, and Comprehensive Economic Development Strategy for Chittenden County. The ECOS Scorecard is our online platform that hosts the ECOS Partners' shared measurement system that monitors how Chittenden County is doing with regard to achieving our shared ECOS goals. (<https://app.resultsscorecard.com/Scorecard/Embed/8502>) The ECOS Plan was updated to better address a few state requirements on May 18, 2016. (<http://www.ccrpcvt.org/our-work/our-plans/ecos-regional-plan/>)
- **Supporting the STEM Industry Cluster and Young Professionals** – CCRPC examined these issues and produced a white paper in June 2016. This white paper explains the important role that the STEM cluster and young professionals play in the County's economy; examines the current conditions of the STEM cluster and young professionals in Chittenden County; explores the building blocks necessary for growing the STEM cluster economy; and offers suggestions for

future work that can be undertaken by the CCRPC to help support the STEM economy.
(<http://www.ccrpcvt.org/our-work/economic-development/>)

- **Emergency Management** – CCRPC, with Local Emergency Planning Committee 1 (LEPC 1 <http://www.ccrpcvt.org/about-us/committees/local-emergency-planning-committee/>), served as a key conduit between the City and the State in sharing damage assessment information after disasters, helped with emergency preparedness for hazardous materials incidents, hosted workshops on a wide array of emergency preparedness topics, and facilitated Incident Command System training.
- **All-Hazards Mitigation Plan** – CCRPC staff, in consultation with municipal staff, have been working to develop the 2016-2021 Chittenden County Multi-Jurisdictional All-Hazards Mitigation Plan along with individual Hazard Mitigation Plans for each municipality. These plans outline key municipal actions to address and mitigate against common hazards such as severe rainstorms and flooding. In addition to providing individual assistance to each of the member municipalities, the CCRPC helped to facilitate the Hazard Mitigation Plan Committee to develop comprehensive countywide mitigation strategies. (<http://www.ccrpcvt.org/our-work/emergency-management/hazard-mitigation-plan/>)
- **Transportation Demand Management** – The CCRPC, along with regional and state partners, continued hosting **Go! Chittenden County**, a one-stop-shop for information and advice about our region's transportation resources (www.gochittendencounty.org). The CCRPC continues promoting the annual **Way to Go! Challenge** (www.waytogovt.org) to encourage sustainable transportation (non-single occupant vehicle travel) and demonstrate the environmental and financial benefits. The CCRPC also launched the **Travel Smarter** platform and campaign, a trip planner that provides a side-by-side comparison of the time, costs, distance, and calories associated with driving, biking, walking, and taking the bus. (www.TravelSmarterVT.org)
- The **Intelligent Transportation System Plan** was adopted in January 2016 and describes how to best use telecommunications and technology to boost the efficiency of the transportation system and provide timely information on travel options. (<http://www.ccrpcvt.org/wp-content/uploads/2016/01/ITS-Plan-Update-Architecture-Final.pdf>)
- **Regional Active Transportation Plan** – The CCRPC is updating the Regional Pedestrian-Bicycle Plan to identify and make recommendations for a comprehensive, connected, accessible and safe regional network for walking and biking. (<http://www.ccrpcvt.org/our-work/our-plans/regional-bikeped-plan/>)
- **Diversity & Equity** – The CCRPC continues to use the **2014 Public Participation Plan (PPP)** to guide our focus on diversity and equity in all projects. (<http://www.ccrpcvt.org/our-work/our-plans/public-participation-plan/>)
- **Regional Technical Assistance** – Includes transportation technical assistance, GIS mapping, model municipal plans, bylaw and ordinance revisions, Act 250 application reviews, grant administration, build-out analyses, orthoimagery acquisition, and improving the VT Online Bridge and Culvert Inventory Tool (<http://www.vtculverts.org/>).
- **Education & Training** – The CCRPC held the Planning Commissioners' Summit, Green

Infrastructure trainings, and hosted a Regional Highway Safety Forum with VTrans. We continued hosting meetings and online webinars open to municipalities and regional partners covering topics such as: Equity Issues in Transportation Planning; Achieving Multimodal Networks: Applying Design Flexibility and Reducing Conflicts; Complete Streets policies; VOBCIT/VT Culverts (<http://www.vtculverts.org/>); and the entire 12-webinar series from the Associate of Pedestrian and Bicycling Professionals.

- **Byway** - Developed the Lake Champlain Byway Story map - <http://map.ccrpcvt.org/lcbyway/>
- **Neighbor Rides** – Since Spring 2013, CCRPC has been investing in Neighbor Rides to integrate volunteer drivers into human services transportation in order to increase access to transportation for seniors and persons with disabilities by offering a lower-cost mode of transport. (<http://www.unitedwaynwvt.org/Neighbor-Rides>)
- **Opioid Alliance** – The CCRPC was asked to serve as the backbone for the Chittenden County Opioid Alliance and hired a Program Director. The Opioid Alliance is a unique commitment from state, local government, and non-profit leaders to put forth a comprehensive mutually reinforcing approach to reducing opioid abuse and the ancillary burdens they bring to our community. (<http://www.ecosproject.com/chittenden-county-opioid-alliance>)
- **Building Homes Together** – The CCRPC, Champlain Housing Trust and Housing Vermont are leading a coordinated campaign to strengthen Chittenden County communities by building 3,500 homes by 2021 for people of all incomes, including 700 affordable homes. This campaign began in spring 2016. (<http://www.ecosproject.com/building-homes-together>)
- **Clean Water Advisory Committee** – The CCRPC formed the Clean Water Advisory Committee (CWAC) to oversee CCRPC activities and policy development regarding but not limited to, the Vermont Lake Champlain TMDL Plan and its related plans and programs.

For further information about the CCRPC please visit <http://www.ccrpcvt.org/> or contact CCRPC Executive Director, Charlie Baker, cbaker@ccrpcvt.org, 802-846-4490 x23.

CHITTENDEN UNIT FOR SPECIAL INVESTIGATIONS (CUSI)

The Chittenden Unit for Special Investigations (CUSI) is a multi-agency task force dedicated to providing criminal response to reports of sexual assaults, serious child abuse and child fatalities. For over 21 years, the primary focus has been to protect and support all children, adults and families. CUSI defined what is now known as a true multidisciplinary team (MDT) approach to investigating crimes of this nature. The multidisciplinary team is the heart of CUSI and is composed of six police detectives, a unit director, a victim advocate, an in-house investigator with the Department for Children and Families (DCF), and a dedicated prosecutor from the Chittenden County State's Attorney's Office. We work jointly with mental health providers, medical providers and Department of Corrections. In addition CUSI houses and supports the ***Chittenden Children's Advocacy Center (CAC)***. ***CUSI*** epitomizes community oriented policing. In the year 2016, we have continued to strengthen and expand our contacts with community partners. The success of CUSI is reflected by the statewide recognition that these multidisciplinary styles units do work.

The Chittenden Children's Advocacy Center, working together with CUSI, is a 501(c) (3) nonprofit entity offering a range of services to children and families affected by these crimes. The primary goal of ***The Children's Advocacy Center*** is to ensure that children are not further traumatized by the intervention system intended to protect them. This program has many benefits, with an approach that allows for faster follow-up to child abuse reports, more efficient medical and mental health referrals, fewer child interviews, more successful prosecutions, and consistent support for child victims and their families. It is our goal to support them and meet their emotional needs.

CUSI and the ***CCAC*** investigate these crimes in Chittenden County which consists of a population of approximately 172,000 residents. On average, CUSI investigates over 280 cases a year; over 62% of those cases involve child victims. In recent years, we have noticed an increase in the complexity of cases given the substantial increase in computer usage and other mobile devices.

Case types include: Sexual assaults, lewd and lascivious conduct, serious child abuse, child fatalities, human trafficking, sex offender registry and violations, child pornography

July 1, 2015 through June 30, 2016 we have seen 288 cases which include 166 children and 122 adults.

During the course of the 2015 year, CUSI has continued to have a high amount of case referrals from both DCF as well as local law enforcement agencies. These cases continue to get more and more complex with new technology components being created on a fairly frequent basis. The investigations require the detectives to spend significant amounts of time gathering information from corporations like Facebook, Google, Yahoo, Snapchat, Plenty-o-Fish, Instagram, cell phone wireless carriers, etc. The amount of data that is gathered then requires the investigator to spend a significant amount of time reviewing the documents and gathering evidence. In order for detectives to have access to this information, it often requires the issuance of multiple subpoenas and the application of search warrants from a judge before we can even gather the documents that we need from these companies. The cases that we investigate are considered the most heinous crimes to investigate other than murder. The negative effects of these crimes stay with a victim for their entire life and, therefore, we do the best job we can to build the strongest case against the defendants that we investigate.



The Committee on Temporary Shelter (COTS) is grateful for the allocation we received in 2016 from the Town of St. George. COTS utilized this funding to help offset the cost of sheltering homeless individuals and families, and to break the fall for the many more people who are at risk of becoming homeless.

Support from the Town of St. George helped COTS achieve the following between July 1, 2015-June 30, 2016:

- COTS provided a safe, warm place to stay for 64 families (including 100 children) at our emergency family shelters;
- We served 579 individuals at our Daystation, a daytime shelter offering a free daily meal and access to additional support services;
- Our case management team provided outreach and support for 157 individuals and 163 families in shelter and transitional housing;
- Our Housing Resource Center helped 433 low-income households (925 individuals; 389 of whom were children) experiencing financial crisis avert homelessness and stay in their housing or to become rapidly rehoused;
- COTS provided overnight emergency shelter and a refuge from the streets for 220 individuals ranging in age from 18 to 75 (30% of whom were single women).

We provided homelessness prevention services to two families living in the Town of St. George.

Financial support received from the Town of St. George made the following outcomes possible:

- “Ben” had a great job as a medical technician working for the local hospital. “Emma” was working full time for a large corporate employer. They were looking forward to the birth of their fourth child in a few months, not expecting the challenges that lie ahead. After the birth of their baby, they learned that “Emma” had not been working for her employer long enough to qualify for paid maternity leave. The new baby had been born with a heart defect, making it impossible for “Emma” to return to work early. With medical bills piling up and the loss of a full-time income, the family started to fall behind on their rent and other expenses. “Ben” began working as much overtime as he could possibly manage to start paying down their debts. He was making progress, but they were too far behind on their rent, and their landlord began eviction proceedings. “Ben” came to COTS’ Housing Resource Center (HRC) looking for help, feeling exhausted and defeated. To prevent this family from falling into homelessness, the Opportunity Fund helped pay a large portion of their back rent and stabilized their housing. Their HRC housing specialist also provided key referrals to area resources to help the family access specialized affordable child care that enabled “Emma” to return to work part time. This additional income, coupled with a revised

household budget, has kept this family safely in their home and renewed their sense of hope for the future.

- “Maggie” was working as a nurse at a large private medical practice when her hours were cut. Shortly after that, office branches began to close, and it was not long before the entire practice she had worked at for three years closed for good. As a military veteran and single mother of three young girls, “Maggie” began feverishly applying for other nursing positions as well as accessing local resources for veterans. She was given small amounts of assistance here and there to keep her afloat until her unemployment insurance began, but she soon found her unemployment benefits were not enough to cover the monthly expenses for herself and her three girls. A HRC housing specialist met with “Maggie” to assess her situation and determined that she was eligible for assistance from the Opportunity Fund. COTS would subsidize half of “Maggie’s” rent for the next three months while she secured new employment and developed a plan to get back on her feet. “Maggie” came in to meet with a HRC housing specialist on a monthly basis to help her set goals and improve her budgeting skills. “Maggie” applied for dozens of jobs every week, but initially found it challenging to secure a new nursing position. By the end of the three months, “Maggie” had achieved all of her goals including enrolling in a training program to fulfill a lifelong ambition to become a paralegal. Toward the very end of her subsidy period, “Maggie” found employment as a nurse. She is also on her way to becoming a paralegal. She and her three children continue to live comfortably in their home.
- “Barry” came to COTS after a painful back injury left him unable to work for some time. With no income coming into the household, he was behind on his rent. “Barry’s” landlord felt he was a good tenant and did not want to evict him, but needed to receive the back rent or he and his family would have to vacate the unit. Due to a slow recovery, “Barry’s” doctor ordered him to not work for the next two months, which meant that he would fall further behind on his rent and other financial obligations. With money from the Opportunity Fund, we provided “Barry” with a three-month rental subsidy so he would be able to recover from his injury and keep his home. Over the next few months while recovering, “Barry” attended credit and budgeting classes through the Champlain Valley Office of Economic Opportunity’s Financial Futures program. Each month “Barry” would meet with his housing specialist to discuss the challenges he was facing during his recovery and how best to overcome those obstacles. During that time, the housing specialist also discussed with “Barry” how his injury might impact his professional future and how he could improve his long-term financial stability by considering a different career path. At the end of the three months, he was still struggling with his medical issues, but was able to return to work and begin envisioning a new future.

These are just a few examples of how COTS works to end homelessness – not just through temporary shelter but also through innovative prevention strategies. Our work is made possible in part by contributions like yours. We very much appreciate the support of the Town of St. George and its taxpayers.

Thank you so very much!

DOROTHY ALLING MEMORIAL LIBRARY

"I have found the most valuable thing in my wallet is my library card." – Laura Bush

If you live in St. George and have a library card, it is indeed an item of great value. The Dorothy Alling Memorial Library (DAML) is a vibrant and welcoming place that has a wonderful collection of books and CDs and also provides a variety of important services to people of all ages.

2016 Statistics

The library has 4,874 card holders (Williston and St. George) and patron visits are up 2% over last fiscal year. St. George has 212 registered patrons, which is 4% of the total registered. The library collection is extensive (39,338 items) and includes books, magazines, audiobooks and DVDs. St. George patrons borrowed 5,042 items, which is 4% of the total circulation. Wifi sessions (up 36% over last fiscal year) provide valuable access to the internet. The Community Room in the library is an active place with 54 groups holding 119 meetings. Additionally, the display cases and gallery walls provide exhibit space each month for an array of artists, photographers, and crafters.

The library continues its space reconfiguration and renovation in order to be as efficient and effective as possible. Updating the "zones" to reflect the changing library needs as well and changes in how the library is used is an ongoing process. Modular furniture in the teen has been used to create places where small groups can get together for quiet small group discussion, to work on laptops or watch a movie. New shelving in the children's picture book area has opened up more space and made the books easier to access. Changes in the adult section are planned for the future, as well. The new courtyard in front of the library has been completed and is a safe and welcoming entryway to DAML.

DAML staff worked with the schools to help fill the gap created when the schools release early every Tuesday. A rotating schedule of programs including Lego Club, movie presentations, drop-in programs on science, art, and cooking, and After-School Café keep students engaged if they choose to come to the library during this time. Other youth programs included a pet parade, pajama story hours, Reading with Therapy Dogs and Cats, Very Merry Theater, and game days. Adult programs included flower arranging, Shape & Share Stories with Recille Hamrell, local authors Frank Foley and Tim McKay, pastel painting, *Of Wheelmen, The New Woman, and Good Roads: Bicycling in Vermont, 1880-1920* (sponsored by the Friends of the Library), adult coloring and an energy series with Sustainable Williston. New this year was a community service initiative which including serving a meal at the Salvation Army. More adventures outside the library walls include nature hikes at Sucker Brook Hollow and the Isham Farm, disc golf, and a book discussion at a local restaurant. Programs for all ages inside and outside DAML provide unique learning opportunities and making connections in the community brings us all together.

Pictured is staff member Sarah Hibbeler during story time and Dinoman visiting the library with life-sized blow up dinosaurs.



Our wonderful Bookmobile, “Dottie”, is now at work year round. Dottie visits area daycare centers to introduce our youngest residents to youth programs and children’s books. On the other end of the spectrum, Dottie’s improvements make visiting our senior population easier for the library staff and allow for an increase in the number of items available to check out. The updated checkout system in the bookmobile also allows for better coordination between Dottie and the library. This summer the bookmobile was able to serve children and their parents with its expanded offerings, and the handicap-accessible ramp worked beautifully. DAML also partnered with the Williston Food Shelf and offered healthy snacks during Dottie’s summer routes. There were 30 total nights of bookmobile visits to neighborhoods with 10 visits to those in St. George. There were 97 St. George patron visits to the bookmobile, which is 10% of total Bookmobile patron visits. There were 126 items borrowed by St. George card holders, 21% of the total Bookmobile circulation.

The summer reading program this year tied into the Olympics, with “On Your Mark, Get Set, Read!” as the theme for children and “Get in the Game, Read!” for teens. Keeping students interested and exciting about reading over the summer is increasingly important. Activities over the summer such as archery, Fitness Fun Seuss Style, and a magic show kept literacy on the mind of many families. Here, Pat Mardeusz kicks off the Summer Reading Program with the annual parade around the town green.



This year has been exciting and productive. The Friends of the Library and the entire Williston community have been extremely supportive. There are a number of adult, student and Therapy Dog and Cat volunteers who lend their time and talent to DAML. The library staff and volunteers were entertained by the UVM Top at the annual Volunteer Breakfast in thanks for all they do.

We are all very grateful for the professionalism, knowledge and expertise shown by the library staff. The trustees want to thank Marti and all those who work at the library for all they do to make DAML a place where people with an interest find what they need. Respectfully submitted: DAML Board of Trustees, Karla Karstens, Chair, Kristin Caterer, Jeff Dannies, Kathy Fernee, Steve Perkins, Jude Hersey, and Barbara Mieder.



Greater Burlington Industrial Corporation (GBIC) Activities for FY 2016

Over the past year the Town of St. George and its residents have benefited in several ways from GBIC's initiatives. GBIC has worked with value-added and manufacturing businesses located in the area to facilitate their growth, and to ensure that their needs are met so that they are able to continue to provide high-paying jobs in Chittenden County. GBIC continues to work with the state and local government to strengthen the local economy and provide jobs for all residents.

GBIC also continued to work closely in cooperation with Vermont Technology Council and the Vermont Center for Emerging Technology (VCET) to develop the young businesses with dynamic growth potential to provide the future job opportunities for St. George and the region.

GBIC has worked on many initiatives for the benefit of our County and our region. In partnership with the Chittenden County Regional Planning Commission, GBIC updated the new Comprehensive Economic Development Strategy (CEDS) for Chittenden County. Updating the CEDS makes our county EDA compliant and potentially enables Chittenden County organizations and municipalities to apply for and receive up to 50% federal funding for projects that directly aid and support economic development. Working closely with municipalities and communities to ensure the inclusion of qualifying projects is an important component of building a meaningful CEDS.

Regional Contacts

During the past year GBIC conducted **132 visits/contacts** with our region's high value-added businesses and essential organizations and institutions critical to economic development in Northwestern Vermont and statewide. Our business visits/contacts during the past twelve months involved companies employing over **36,000** Vermonters.

Vermont Training Program

GBIC facilitated the award of **7 grant contracts, totaling over \$392,000**, from the Vermont Training Program to Chittenden County businesses. These contracts served to train new employees and retrain incumbent workers, and greatly contributed to our continued regional economic development.

Vermont Economic Development Authority

In FY16, **33** area businesses applied to VEDA for financing, resulting in over **\$5 million** dollars worth of VEDA commercial loans being closed in Chittenden County.

Vermont Employment Growth Incentive Program

In FY16, GBIC facilitated, through the Vermont Economic Progress Council, the approval of a Vermont Employment Growth Incentive award totaling over **\$525,000** for an expanding business in the Chittenden County region.

Lake Iroquois Association
2016 Annual Report

In recent years the Lake Iroquois Association volunteers have gathered data on nutrient levels in tributaries, written grants to remediate streams to reduce storm run off, run a greeter program, and numerous other initiatives. These efforts continue and are aiding in improving the water quality of Lake Iroquois. However, this year much of our energy has been focused on reducing the infestation of Eurasian Water Milfoil (EWM) in the lake.

EWM is a destructive invasive plant. It spreads easily by rooting from fragments and forms dense thickets that choke out native species and destroy fish spawning areas. For the past several years, the LIA has been researching ways to combat milfoil in the lake. We have learned that once introduced it will not go away completely, but it can be reduced and controlled. However, this takes consistent effort and funding over many years.

After more than a year of research and preparation, we developed a five year plan to tackle the milfoil problem. This plan is a multi-pronged approach which includes diver-assisted suction harvesting (DASH), careful use of herbicides, bottom barriers, plus spread prevention and education of lake users. The first step was taken this summer by conducting diver-assisted suction harvesting (DASH) of milfoil on the lake. Supported by grant funding and LIA membership dues, we were able to hire AB Aquatics to bring in their DASH boat and crew to harvest milfoil. The fishing access area was cleared first since boats entering the lake and churning through milfoil can fragment it and facilitate its spread. Milfoil can also clog boat propellers and can be carried on the boat to other water bodies. The DASH boat worked for two weeks and was able to clear a channel at the fishing access. While helpful for certain areas of the lake, we learned that DASH is too slow and expensive for an entire lakewide solution. We have, therefore, applied to the state for a permit to use a low dose herbicide to more fully address this problem.

Even as we worked on the milfoil problem, the LIA continued its many other projects this year. We once again sponsored the greeter program at the fishing access, supported by a grant from the state. We also received a grant from the Lake Champlain Basin Program to set up a boat wash station at the fishing access. This will be operational for the 2017 season and supports our efforts to further prevent the spread of invasives into and out of our lake. We continue to work with the Lake Iroquois Recreation District, the surrounding towns, and the state departments of Fish and Wildlife and Environmental Conservation on water quality issues and best management practices to enhance the health of the lake ecosystem.

Other projects included volunteers continuing to monitor the lake for blue-green algae outbreaks. We are happy to report that there were none this year. We also continue our education and outreach efforts with the regular publication of our newsletter, *The Lake Iroquois Monitor*, maintenance of our web site, www.lakeiroquois.org, the creation of our Facebook page, <https://www.facebook.com/lakeiroquois/>, and public meetings to discuss lake issues and gather feedback on the milfoil plan. In addition, we maintain our work on reducing nutrient levels in the lake. We have applied for an Ecosystem Restoration grant to remediate a lake tributary that is a high sediment and nutrient contributor to the lake. We also are researching other methods so reduce nutrients coming into the lake.

2016 has been a very busy year at the lake and we are looking forward to an even busier year in 2017. As an all-volunteer organization the LIA is grateful to the many people who have worked hard and given so much of their time to benefit all who use this valuable resource. And as always the support and help of the town has been invaluable in helping us to meet our goal of enhancing and improving the water quality of Lake Iroquois for all users.

Submitted by Pat Suozzi, President, Lake Iroquois Association

Hinesburg Community Resource Center

The Hinesburg Community Resource Center (HCRC) is a community based non-profit organization of neighbors helping neighbors. Our core programs include the Food Shelf, Friends of Families and an Emergency Assistance Fund, all of which have been utilized by St. George residents.

The Hinesburg Food Shelf had 952 visits from 195 families this past year, with an average family size of 3.2 people. St. George families made up 9% of the population we served. We are open twice per week, and families are able to visit once per month; we also offer a full Thanksgiving meal to families and offer extra times to pick up fresh produce when. We strive to offer the most nutritionally dense foods to our clients, including vegetables purchased or gleaned in cooperation with local farms and milk donated by Kimball Brook Dairy. Our staff of volunteers also offers healthy recipes and advice on ways to use the foods that are offered.

For those unable to meet basic needs, HCRC offers an Emergency Assistance Fund. This fund may provide assistance to families to help with utility bills, fuel oil, rent, car repairs and more. We coordinate with local churches and other area agencies to meet some needs and to refer families to other community supports. Additionally, we coordinate the donation of items to meet basic needs for clothing, bedding, diapers and baby and care items as needs arise.

Our Friends of Families playgroups serve as an important way to connect families with community resources. We hold three regular playgroups throughout the week. Our facilitators plan a weekly activity and healthy snack, as well as early learning concepts through song and circle time activities.

Medical Equipment Lending is offered to anyone in need. Donations of gently used equipment can be made to the HCRC and individuals can borrow this equipment as long as needed, free of charge.

HCRC received additional funding this year from SCHIP, Building Bright Futures, the Lion's Club, the Town of Hinesburg, area faith groups, and donations from individuals and businesses throughout the community. We are grateful to be a part of such a giving and caring community, and the continued support by the Town of St. George is truly appreciated.

Rachel Kring, Coordinator

THE VERMONT CENTER FOR INDEPENDENT LIVING
TOWN OF ST. GEORGE
SUMMARY REPORT

Request Amount: \$100.00

Since 1979, The Vermont Center for Independent Living (VCIL) has been teaching people with disabilities and the Deaf how to gain more control over their lives and how to access tools and services to live more independently. VCIL employees (85% of whom have a disability) conduct public education, outreach, individual advocacy and systems change advocacy to help promote the full inclusion of people with disabilities into community life.

In FY'16 (10/2015-9/2016) VCIL responded to over **2,7111** requests from individuals, agencies and community groups for information, referral and assistance and program services for individuals living with a disability. VCIL Peer Advocate Counselors (PACs) provided one-on-one peer counseling to **360** individuals to help increase their independent living skills and **24** peers were served by the AgrAbility program. VCIL's Home Access Program (HAP) assisted **196** households with information on technical assistance and/or alternative funding for modifications; **95** of these received financial assistance to make their bathrooms and/or entrances accessible. Our Sue Williams Freedom Fund (SWFF) provided **92** individuals with information on assistive technology; **35** of these individuals received funding to obtain adaptive equipment. **559** individuals had meals delivered through our Meals on Wheels (MOW) program for individuals with disabilities under the age of 60. VCIL is also now home to the Vermont Telecommunications Equipment Distribution Program (VTEDP) which served **35** people and provided **23** peers with adaptive telecommunications enabling low-income Deaf, Deaf-blind, hard of hearing and individuals with disabilities to communicate by telephone.

VCIL's central office is located in downtown Montpelier and we have five branch offices in Bennington, Chittenden, Lamoille, Rutland and Windham Counties. Our Peer Advocate Counselors and services are available to people with disabilities throughout Vermont. Also new this year, our Windham county office now houses the Vermont Interpreter Referral Service (VIRS) (previously under the VT Center for the Deaf and Hard of Hearing) and provides statewide interpreter referral services for sign language, spoken English and CART services for assignments in medical, legal, mental health, employment, educational, civil and recreational settings.

During FY '16, VCIL provided direct services to Vermont residents utilizing the following programs/services:

- Information, Referral and Assistance (I,R &A)
- Home Access Program (HAP)
- Meals on Wheels (MOW)
- Peer Advocacy Counseling (PAC)
- Sue Williams Freedom Fund (SWFF)

To learn more about VCIL, please call VCIL's toll-free I-Line at:
1-800-639-1522, or, visit our web site at **www.vcil.org**.



Town of St. George VNA Request for Funding FY 2018

Care Report for FY16:

The VNA cared for **11** people in St. George during our past fiscal year (July 2015– June 2016) with the following services:

VNA SERVICE	VISITS
Nursing	29
Physical Therapy	26
Speech Therapy	0
Occupational Therapy	10
Social Work, Social Service	2
Total	67 Visits

COST OF PROVIDING CARE	AMOUNT
Total cost of VNA services	\$11,973
Amount reimbursed by Medicare, Medicaid, private insurance, contracts and patient fees	\$11,151
Remaining balance	\$822

The VNA requests annual contributions from each city and town in our two-county region. Your contribution is critical to supporting the **\$1.54 million** of charitable care that we provided this year (this represents the gap between what we were paid and the actual cost of providing services).

Last year, the VNA cared for over 5,400 people of all ages, regardless of their ability to pay. Your contribution helps ensure St. George residents can access essential health care services at home to keep them healthy, independent and active members of your community.

The Town of St. George pledged \$1,224 for FY2017. Thank you.

FY18 Request:

For fiscal year 2018, the VNA is requesting a contribution of \$1,224.

December 8, 2016

Dear Community Members of St. George,

Thank you for your strong support of the work we do and the services we provide to survivors of domestic abuse in our community! Steps to End Domestic Violence (formerly Women Helping Battered Women) has been providing lifesaving services to residents of Chittenden County for over 40 years.

With your help, we provided needed services to a total of 5,086 individuals this past fiscal year, 2,119 adults and 2,967 children. We have confirmed that we provided services and support to three adult residents from St. George this past fiscal year. We also continued to develop our strong presence and relationship with the St. George community. This past fiscal year, our Education & Prevention Coordinator spent a great amount of time in the Champlain Valley Union High School providing education and prevention materials to St. George's young adults. The Educator provided workshops on the topics of Teen Dating Violence and Consent to eight Champlain Valley Union High School health classes, reaching a total of 215 students.

Along with enabling us to serve the town of St. George, your financial support helps us to fulfill our mission: To assist in the transition to a safe, independent life for all those who have been affected physically, sexually, emotionally, or economically by domestic abuse. To promote a culture that fosters justice, equity and safety.

Steps to End Domestic Violence provides a full spectrum of free and confidential services, which include:

- Emotional support, information and referrals, crisis intervention, safety planning and options counseling can be accessed through the **24/7 Hotline**.
- Safe and confidential emergency **Shelter** and **Safehome** programs for survivors who are homeless due to domestic abuse.
- Supportive and affordable **Transitional Housing** where survivors can live with their children for up to two years.
- **Legal Advocacy** including court accompaniment and systems navigation around Relief from Abuse Orders, child custody, immigration, and divorce.
- Weekly **Legal Clinic** co-facilitated by legal advocates and local attorneys.
- Playgroups, one-on-one mentoring, parenting support, advocacy, and crisis intervention is provided for **Children and Youth**.
- A weekly confidential **Support Group** enables survivors to share their story and receive support and information from others in a safe space.
- **Economic Justice Advocacy** is provided to help secure long-term housing, regain financial independence, and explore education and employment opportunities.
- The **Safe at Work Network** engages the business community in a proactive approach to addressing domestic abuse in the workplace.
- **Education and Outreach** is provided to raise awareness, disprove myths, and provide accurate information about domestic abuse to our community.

Once again we would like to thank you and to acknowledge that we could not have done this work without your support. Please do let us know about your ideas or suggestions for improving our services and outreach to the town of St. George.

Sincerely,

The Steps to End Domestic Violence Team

New Hampshire and Vermont Region

The American Red Cross of New Hampshire and Vermont is on call to help our community 24 hours a day, 7 days a week and 365 days a year. A local Red Cross volunteer is often the first "neighbor on the scene" after a disaster strikes offering a hot cup of coffee, a warm blanket and a glimmer of hope to those in need. Supported primarily by volunteers, the Red Cross provides emergency support for victims of fire, flood and other disasters as well as instruction in health, safety and aquatics courses. Whether we are helping one family recover from a devastating home fire, providing emergency shelter and supplies to hundreds of families after a major disaster, or food and water for first responders, we have historically been a vital part of the local community.

2016 was especially busy across our region and the Red Cross provided vital services to our community.

- Responded to 256 disasters/emergencies in our region, supporting 502 families and 1218 individuals. While St. George did not have any disasters last year, we responded to 20 incidents and served 113 individuals in Chittenden County as a whole.
- Collected 95,154 pints of blood and blood products from 52,370 people at over 2900 drives. 777 of these drives were in Chittenden County and collected 18,653 pints of life-saving blood.
- Empowered more than 1,200 trained volunteers to assist their neighbors during times of need, 247 of these volunteers call Chittenden County home.
- Trained 32,724 people in our various health and safety courses, including 1793 at 310 courses in Chittenden County specifically.
- Installed almost 1829 free smoke detectors in homes and worked with families to create fire-evacuation plans, 153 in Chittenden County.
- We connected **628** military members with their families and loved ones with the help of our Service to the Armed Forces department, including 21 Chittenden County residents who are currently serving.
- We are proud to have an efficiency rating of 91%, meaning .91 cents of every dollar goes directly to support the programs and services provided by the American Red Cross.

Since the Red Cross is not a government agency, we rely on individuals, businesses and local communities to support our efforts in helping to prevent, prepare for, respond to, and recover from emergencies. Toward that end, we are asking each community for a donation to support our work. We would greatly appreciate your support in the amount of \$250 for the next year. Your partnership will help ensure that the American Red Cross has the resources to support communities throughout Vermont and New Hampshire when they need it most.

If you or someone you know experiences a fire, flood or other disaster and needs assistance, please call (802) 660-9130 option 1, anytime 24/7.

Sincerely,

Claire Giroux-Williams
Development Specialist

VT-Alert - Public Portal: About VT-Alert

VT-Alert is part of the State of Vermont's ongoing commitment to provide Vermonters with information so that they will understand the risks and threats that they may face and know how to respond accordingly. Each of us has the responsibility to be as prepared as possible for any emergencies that may arise. One of the keys to preparedness is having up-to-date information.

VT-Alert contains critical emergency-related information including instructions and recommended protective actions developed in real-time by emergency service personnel. Concurrent with the posting to this website, that same information will be disseminated through various communications systems (e.g. email, cell phones, media outlets) to those who sign up.

The information posted on **VT-Alert** will include severe weather warnings, significant highway closures, hazardous materials spills, and many other emergency conditions. Additionally you will find information regarding response actions being taken by local and state agencies and protective actions that you should take to protect you, your family, and your property.

By signing up for **VT-Alert**, you can receive warnings and emergency information via the web, your cell phone, email, and other technologies. Signing up for VT Alert is free. Your information is protected and never shared with anyone else. You can modify what type of information you receive or unsubscribe at any time. It is a tool to provide you with critical information when you may need it most.

To sign up, go to vem.vermont.gov!

E-911

Vermont's 911 system works by connecting your land line telephone number to your locatable address. When a phone call is placed to 911, the computer automatically hooks up the phone number and the address. If the caller is unable to explain where they are or if they are unable to speak, the dispatcher will still know where the call is coming from. If the caller does not respond to the dispatcher, generally rescue personnel will be sent out to be sure that everything is ok. So it is vitally important that the phone numbers are linked with the correct addresses.

The 911 system rules say that if there are more than two addresses on the same driveway, that driveway must be turned into a private road with its own numbering.

If you are unsure of your actual location, please check with me. If any corrections need to be made, we would prefer to do them before there is an emergency.

Remember that dialing 911 is for emergencies only. If you need to contact the police, fire or ambulance for any other reason, please use the phone numbers listed below.

As usual, if you have experienced any problems using the 911 system, please let me know.

Maggie Kerrin
St George E911 coordinator

State Police: 878-7111
Fire: 878-5622
Ambulance: 878-5622



agewellvt.org
Helpline: 1-800-642-5119
P 802-865-0360
F 802-865-0363
76 Pearl Street, Ste. 201
Essex Junction, VT 05452

December 12, 2016

Age Well (formerly The Champlain Valley Agency on Aging) is a non-profit organization serving Northwestern Vermont. Our mission is to provide the support and guidance that inspires our community to embrace aging with confidence. Since 1974, we have provided aging Vermonters with the necessary support to manage their daily living needs, with the goal of keeping them active, healthy, and independent.

In 2015-2016, Age Well provided home-delivered meals, congregate meals, options counseling, wellness classes and access to our Helpline to the residents of St. George. Our wide array of services includes the following:

Nutrition Programs

Meals on Wheels

- Oversee over 60 community routes delivered by more than 350 volunteers five days a week
- Provides nutritious meals that take special diets into consideration
- Performs safety and wellness checks

Community Meals

- Serve meals at over 70 locations: senior centers, churches and community-based spaces
- Provides a gathering place that brings the community together

Restaurant Ticket Program

- Gives the opportunity to eat at a local restaurant
- Offers tickets to seniors who can make a \$5 donation to dine at one of the participating restaurants

Nutrition Counseling

- Performed by a Registered Dietician
- Specialized menus are developed to better meet each person's nutritional needs

Case Management Services

- Help individuals access services and benefits that will enhance their quality of life
- Assess for benefit qualification such as 3Squares, Medicaid, fuel assistance, supplemental insurance, housing options, SSI, Medicare, and assist in exploring long-term care options
- Help families and caregivers understand the range of care settings, services, and support programs



agewellvt.org
Helpline: 1-800-642-5119
P 802-865-0360
F 802-865-0363
76 Pearl Street, Ste. 201
Essex Junction, VT 05452

HomeMeds

- Perform risk screening to identify potential medication errors and medication-related problems
- Complete an assessment of the individual's condition and medication adherence using established guidelines
- Consult with a pharmacist to develop a plan of action
- Follow-up with physician and client to improve medication use and address "red flags"

SHIP (State Health Insurance Assistance Program)

- Offering free, confidential health insurance counseling to current or potential Medicare beneficiaries through specialized counselors

Volunteer Services

- Includes a network of over 900 volunteers
- Examples of volunteer services include
 - Deliver Meals on Wheels
 - Help with grocery shopping
 - Perform yard work/snow shoveling
 - Balance a checkbook
 - Complete handyman tasks
 - Provide transportation

Tai Chi: A Focus on Balance and Independence

- Offered in Addison, Franklin, Grand Isle, and Chittenden counties
- Beginner and advanced classes are available
- Classes are 8 weeks long and are open to adults 50 years old and over at no charge

Caregiver Support

- Dementia Respite Support grants to help pay for in-home services
- Caregiver Training: six-week, nationally recognized class focusing on mental and physical health

Senior Helpline

Help is one call away!

Toll-free, confidential service providing information, referrals, and assistance on community and statewide programs





agewellvt.org
Helpline: 1-800-642-5119
P 802-865-0360
F 802-865-0363
76 Pearl Street, Ste. 201
Essex Junction, VT 05452

The number of seniors is expected to grow exponentially over the coming years. Currently, there are over 40,000 Vermont seniors living alone --in or near poverty-- and more than half are threatened by hunger and isolation. We are committed to reducing barriers by providing access to healthy meals, in-home care, and community resources. With the support of staff and over 1,000 volunteers, Age Well's sought-after services are designed to meet the diverse needs of clients, families and caregivers.

Due to decreases in federal and state funding and increases in demand for services, we are extremely fortunate to have the opportunity to receive funding from the towns in which we serve. Thank you for your consideration and past support.

Sincerely,

Sara C. Wool
Director of Development & Communications
P 802-662-5229 F 802-865-0363
76 Pearl Street, Ste. 201, Essex Junction, VT 05452

State of Vermont
Department of Health
Burlington District Office
108 Cherry Street, STE 102
Burlington, VT 05402
<http://healthvermont.gov/>

[phone] 802-863-7323
[fax] 802-863-7571
[toll free] 1-888-253-8803

Agency of Human Services

Vermont Department of Health Report for St. George

Your local health district office is in Burlington at the address and phone number above. Come visit or give us a call! At the Vermont Department of Health, we are working every day for your health. With twelve district offices around the state, and state office and laboratory in Chittenden County, we deliver a wide range of public health services and support to your community. For example, in 2016 the Health Department:

Supported healthy communities: Worked with the schools in your community to support the school wellness policies, nutrition, physical activity and substance abuse prevention initiatives.

Provided WIC nutrition services and healthy foods to families: We served about half of all Vermont families with pregnant women and children to age five with WIC (Special Supplemental Nutrition Program for Women, Infants and Children). WIC provides individualized nutrition counseling and breastfeeding support. We partner with grocery stores across the state to enable participants to use a debit-like card to access nutritious foods. The average value of foods provided is \$50 per person per month.

Worked to prevent and control the spread of disease: In 2016 we responded to ~340 cases of infectious disease in Chittenden County. In 2016, \$13,916,297 of vaccine for vaccine-preventable diseases was distributed to healthcare providers statewide.

Aided communities in emergency preparedness: In July of 2016 staff at the Burlington District Office with support from Medical Reserve Corps participated in a large-scale exercise, Vigilant Guard, in Essex. The exercise was a practice of our procedures for distributing medicine to the public in case of a public health emergency.

For 2016/17, \$10,000 will fund training for Chittenden County Medical Reserve Corps (MRC) volunteers. The Chittenden County MRC is a group of health care and public health volunteers who are trained to provide support to the hospital, the Health Department, and communities. If you are interested in becoming an MRC volunteer, you can register at <http://www.ontcallforvt.org/>

In addition, \$58,560.00 will support emergency preparedness capabilities at UVM MC by supporting them to build capacity, provide training to staff and to prepare for public health emergencies.



2016 Annual Report

St. George Town School District



The Champlain Valley School District School Report including the 2016-2017 Annual Report Cards of the Chittenden South Supervisory Union and the CVU High School District is available in the following ways:

- Posted on the web at www.cssu.org,
- Mailed to each resident of the CVSD, or
- Picked up at your local school or town office.

This report includes information that is no longer in the local annual Town Report.

**OFFICIAL WARNING
ST. GEORGE TOWN SCHOOL DISTRICT
ANNUAL MEETING
March 6, 2017 and March 7, 2017**


The legal voters of the St. George Town School District are hereby notified and warned to meet at the Red Schoolhouse in St. George on Tuesday, March 7, 2017, at 6:00 p.m. to act upon the following articles:


- ARTICLE I: To elect a moderator.
- ARTICLE II: To hear and act upon the reports of the St. George School District Officers.
- ARTICLE III: To transact any other business proper to come before said meeting.
- ARTICLE IV: To elect one (1) Town School Board Director for a term of three (3) years, beginning in March, 2017.
- ARTICLE V: To elect one (1) Town School Board Director for a term of one (1) year, beginning in March, 2017.

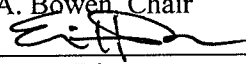
The legal voters of the St. George Town School District are further notified that voter qualification, registration and absentee/early voting relative to said special meeting shall be as provided in Section 552 of Title 16, and Chapters 43, 51 and 55 of Title 17, Vermont Statutes Annotated.

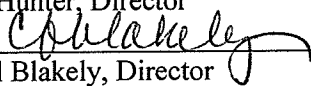
Adopted and approved at a duly noticed, called and held meeting of the Board of School Directors of the St. George Town School District on January 11, 2017. Received for record and recorded in the records of the St. George Town School District on January 19, 2017.

ATTEST:

 1-19-17
April Pillsbury, St. George Town Clerk

 1-11-17
Kelly A. Bowen, Chair

 1-11-17
Eric Hunter, Director


Carol Blakely, Director

**TOWN OF ST. GEORGE
SCHOOL BOARD 2016 ANNUAL MEETING
ST. GEORGE RED SCHOOLHOUSE
MARCH 1, 2016**

SCHOOL DIRECTORS: Kelly Bowen, Eric Hunter.
ADMINISTRATION: Robert Mason, CSSU Chief Operating Officer.
MODERATOR: Steve Faust.

CALL TO ORDER

Moderator Steve Faust opened the St. George 2016 Annual School Board Meeting at 6:41 PM and read the meeting warning.

Article I: To elect a Moderator

MOTION by Phil Gingrow, SECOND by Kelly Bowen, to nominate Steve Faust as Moderator. There were no other nominations.

VOTING ON ARTICLE I: unanimous; motion carried. Article I is passed.

Steve Faust is Moderator.

Article II: To hear and act upon the reports of the Town School District Officers

Kelly Bowen reported and answered questions on the school report as follows:

- The Act 46 Study Committee is looking at consolidation. St. George is part of Chittenden South Supervisory Union (CSSU) and that relationship will be formalized with consolidation.
- Consolidation will help keep 'per pupil cost' steady.
- Williston, Hinesburg, Shelburne and Charlotte must all vote in favor for consolidation to happen. St. George can vote for or against consolidation, but if all the other towns vote in favor of consolidation then St. George is part of the union regardless of the town's vote.
- Unless there is a program that is not offered by CVU high school aged children from St. George will attend CVU. High school students currently attending other schools can remain (grandfather clause).
- Grade school aged children will continue to attend Williston schools until the 10 year contract between St. George and Williston expires and then with consolidation the students can attend any school within the district. There will be no interruption of service.

Bob Mason highlighted:

- The largest budget item for St. George is tuition cost to Williston and CVU and Special Ed expenses.
- With the proposed budget, tuition cost to Williston decreased, but the number of children from St. George attending Williston schools increased.
- St. George is taxed based on the cost per pupil. Special Ed services have been consolidated by CSSU so St. George is seeing a lower cost.

MOTION by Phil Gingrow, SECOND by Caroline Jalbert, to approve Article II as presented.

DISCUSSION: None.

VOTING ON ARTICLE II: unanimous; motion carried. Article II is passed.

Article III: Shall the voters of the St. George School District authorize the Board of School Directors to pay tuition and transportation expenses in conformance with Vermont Statutes

and as authorized by the town for resident pre-kindergarten through Grade 6 students for the school year beginning July 1, 2016 and ending June 30, 2017 and for each school year thereafter until such time as the authorization is rescinded or revised by the voters
MOTION by Phil Gingrow, SECOND by Caroline Jalbert, to approve Article III as read.

DISCUSSION: None.

VOTING ON ARTICLE III: unanimous; motion carried. Article III is passed.

Article IV: Shall the voters of the St. George School District authorize the Board of School Directors to pay tuition and transportation expenses for resident students enrolled in Grades 7-12 in conformance with Vermont Statutes and in conformance with policies duly adopted by the Board for the school year beginning July 1, 2016 and ending June 30, 2017 and for each school year thereafter until such time as the authorization is rescinded or revised by the voters

MOTION by Phil Gingrow, SECOND by Caroline Jalbert, to approve Article IV as read.

DISCUSSION: None.

VOTING ON ARTICLE IV: unanimous; motion carried. Article IV is passed.

Article V: Shall the voters of the St. George School District approve the School Board to expend Two Million Three Hundred Thirty-Eight Thousand Seven Hundred Eighty-Eight Dollars (\$2,338,788) which is the amount the School Board has determined to be necessary for the ensuing fiscal year. It is estimated that this proposed budget, if approved, will result in education spending of \$16,570 per equalized pupil. This projected spending per equalized pupil is .4% higher than spending for the current year

MOTION by Phil Gingrow, SECOND by Caroline Jalbert, to approve Article V as read.

DISCUSSION: None.

VOTING ON ARTICLE V: unanimous; motion carried. Article V is passed.

Article VI: Shall the St. George School District authorize the Board of School Directors to allocate its current fund balance without effect upon the District tax levy as follows: assign Thirty-Five Thousand dollar (\$35,000) of the school district's current fund balance as revenue for the 2016-2017 operating budget and assign the remaining balance (\$125,395) as revenue for future budgets

MOTION by Phil Gingrow, SECOND by Caroline Jalbert, to approve Article VI as read.

DISCUSSION: None.

VOTING ON ARTICLE VI: unanimous; motion carried. Article VI is passed.

Article VII: Shall the voters of the St. George School District authorize the Board of School Directors to borrow and spend money to meet unanticipated expenses for the education of St. George students

MOTION by Phil Gingrow, SECOND by Caroline Jalbert, to approve Article VII as read.

DISCUSSION: There was brief explanation of the purpose of borrowing: to cover unanticipated expenses and to aid in cash flow.

VOTING ON ARTICLE VII: unanimous; motion carried. Article VII is passed.

Article VIII: Shall the voters of the St. George School District authorize the Board of School Directors to borrow money by issuance of bonds or notes not in excess of anticipated revenues for the next fiscal year

MOTION by Phil Gingrow, SECOND by Caroline Jalbert, to approve Article VIII as read.

DISCUSSION: None.

VOTING ON ARTICLE VIII: unanimous; motion carried. Article VIII is passed.

Article IX: To elect one (1) School Director for a term of three (3) years that begins March 2016 and expires March 2019

MOTION by Caroline Jalbert, **SECOND** by Phil Beliveau, to nominate Kelly Bowen as School Director for a term of three (3) years that begins March 2016 and expires March 2019. There were no other nominations.

MOTION by Caroline Jalbert, **SECOND** by Mary Alice Favro, to close the nominations and instruct the clerk to cast one ballot for Kelly Bowen as School Director for a term of three (3) years that begins March 2016 and expires March 2019.

DISCUSSION: None.

VOTING ON ARTICLE IX: unanimous; motion carried. Article IX is passed.

Kelly Bowen is School Director for a term of three (3) years beginning March 2016 and expiring March 2019.

Article X: To elect one (1) School Director for a term of two (2) years that begins March 2016 and expires March 2018

MOTION by Caroline Jalbert, **SECOND** by Kelly Bowen, to nominate Carol Blakely as School Director for a term of two (2) years that begins March 2016 and expires March 2018. There were no other nominations.

VOTING: The clerk was instructed to cast one ballot for Carol Blakely as School Director for a term of two (2) years beginning March 2016 and ending March 2018.

Carol Blakely is School Director for a term of two (2) years beginning March 2016 and expiring March 2018.

To transact any other business proper to come before said meeting.

There was no other business.

ADJOURNMENT

MOTION by Phil Beliveau, **SECOND** by Caroline Jalbert, to adjourn the St. George 2016 Annual School Board Meeting. **VOTING:** unanimous; motion carried.

The meeting was adjourned at 7:25 PM.

RScty: MERiordan

ST. GEORGE BOARD OF SCHOOL DIRECTORS ANNUAL REPORT 2017

March 2017

“Education is the most powerful weapon which you can use to change the world.”

Nelson Mandela

Dear Citizens of St. George:

As we reflect on the past school year and embark upon on the next, we would like to take a moment to acknowledge the teachers and staff who educate our children. Each and every day, their hard work and dedication directly inspire our students’ lives and, as a result, we all benefit from the possibility of a brighter future.

Your school board continues to work hard to ensure that we have the best educational resources available to our children. While St. George students were busy with the day to day of academics in action, 2015-2016 brought dynamic change to the structure of St. George School Board and the Chittenden South Supervisory Union. In June 2016, St. George voters overwhelming voted in support of a new consolidated school district. For the first time in recent history, St. George students will be recognized members of a preK-12 school system. In addition, St. George benefits from a full voting role within the new Champlain Valley School District (CVSD.) The combined resources of the new district will strengthen the programs and education services offered to our students.

What does this mean for the St. George School Board?

For this year, 2016-2017, the St. George School Board has been working alongside of the new CVSD Board. (Kelly Bowen remains Chair on the St. George School Board and Director on the Chittenden South Supervisory Board, in addition to her new role as Director on the Champlain Valley School District.)

St. George School Board remains in effect until the year-end 2017 with the completion of the 2016-2017 financial audit.

The CVSD Board, which was sworn in by the Vermont Secretary of Education in September 2017, has been tasked with the development of the combined district’s budget for the upcoming 2017-2018 school year. The CVSD Board comes online as a fully functioning board in July 2017 replacing individual town boards, the CVU Board, and the Chittenden South Supervisory Union Board.

As you will notice on this year’s Town Meeting Day, St. George voters will be asked to approve, by ballot vote, the proposed CVSD budget for the 2017-2018 school year. Each of the five towns in the district (Charlotte, Hinesburg, Shelburne, Williston & St. George) will vote. Ballots will be collected, comingled, and counted at CVU. Collectively, the combined district must approve the budget.

How has consolidation under Act 46 benefited the St. George taxpayers?

Year after year, I have come before you in collective frustration to explain the rising costs of education, and our inability to effect change in our growing cost per pupil. With your vote for consolidation, we have made an important step to put St. George on par with our surrounding communities.

		FY 2014	FY2015	FY2016	FY2017	FY 2018
Number of Students	of	112.51	115.81	116.56	125.03	3922
Spending Per Equalized Pupil		\$14,797.30	\$16,095.03	\$16,493.86	\$16,570.29	\$15,409.41
Homestead Rate Assessed		\$1.5221	\$1.7146	\$1.7441	\$1.7518	\$1.4915

As you will see in the details of the CVSD budget materials, our school district remains in strong shape. The 2017-2018 recommended budget is \$75,144,759. It is estimated that this will result in education spending per pupil of \$15,409.41 and reflects approximately a 16.2% DECREASE, in St. George taxes over the previous year. This year's proposed budget numbers and the tax savings to St. George are a direct benefit of the Act 46 district merger.

This tax decrease is certainly a cause for celebration, but the tax rate and the consolidation must be a call to action for St. George voters. Education spending continues to rise. More than ever, voices are needed in the process to maintain the standards and quality of service that we expect for our children. There are opportunities for people to get involved in the management and direction of the CVSD Board and the budget process.

St. George taxpayers must become a vocal and visible part of our new district. The fiscal and educational responsibility of our students should never rest on the willingness of one volunteer representative.

We all benefit from an educated community. I appreciate the opportunity to work on behalf of our students, families, and citizens.

Respectfully submitted,

*Kelly A. Bowen, Chair
Eric Hunter, Director
Carol Blakely, Director*

TRANSPORTATION REIMBURSEMENT REQUESTS

If you are a citizen living in the Town of St. George that has a child attending any elementary or secondary school that does not provide transportation, St. George will reimburse you an approved amount for the transportation of the child to school during the academic year.

FOR THE 2016-2017 SCHOOL YEAR

SEND A *WRITTEN* REIMBURSEMENT REQUEST

NO LATER THAN MAY 22

TO: Mr. Bob Mason, CSSU
5420 Shelburne Road, Suite 300
Shelburne, VT 05482

(Requests received after May 22, 2017 cannot be paid)



5420 Shelburne Road, Suite 300, Shelburne, VT 05482
Telephone 802-383-1234 Fax 802-383-1242

January 9th, 2017

Residents of the communities of:

St. George School District

Fiscal Audits of Chittenden South Supervisory Union and its member schools are now the responsibility of the Supervisory Union Board.

Audits for Fiscal Year 2015-2016 were completed, reviewed and approved by the School's Board Chair on January 9th, 2017.

Audit copies are available on the web:

<http://cssu.org/cms/lib5/VT01000775/Centricity/Domain/561/St.%20George%2016%20FS%20final%202.pdf>

They are also available by contacting the Chittenden South Supervisory Union Offices directly.

Respectfully Submitted,

Kelly Bowen
Board Chair, STG

Respectfully Submitted,

Robert Mason
Chief Operations Officer, CSSU



Dear CSSU Community,

Over the past ten years, three separate study committees, comprised of board and community members, considered governance consolidation of our schools. On June 7th, the communities of Charlotte, Hinesburg, St. George, Shelburne and Williston voted to form the *Champlain Valley School District*.

This historic outcome is having a profound positive impact on our ability to provide the most effective education system – one that provides all of our students the greatest educational opportunities, ensures equity across all of our schools, and provides operational efficiencies that will reduce our costs over time.

At the school level, we are engaged in fine-tuning our operations. While we have had coordinated, unified curriculum and assessment and professional development for the past 6-10 years, in our new structure, we're better equipped to ascertain the instructional support we provide for each student and school site. This allows us to have important discussions and make decisions about which areas are fundamental to a quality education and which are discretionary. In this way, we can assure that there is equity of resources for every student while maintaining a healthy level of local autonomy. Whereas past conversations about best practices ultimately resulted in important sharing without resultant changes, current discussions are ultimately focused on understanding the best components of each system and coming up with a collective model that truly is best practice and that truly ensures the best opportunities for our students.

I am personally enthusiastic about this work and am grateful to work in a system that has committed and engaged board members, devoted and exceptional staff, and a community that appreciates and supports its schools.

Finally, I want to acknowledge the enormous contributions of COO Bob Mason to the Chittenden South Supervisory Union. When Bob joined the CSSU central office in 2003, he embarked on a journey to provide a financial and operations systems overhaul that was based on consistency, collaborative planning, and efficient and effective use of all resources. His success is our legacy. CSSU is a highly functional, systems-based entity due in no small part to the work of Mr. Mason. We owe him our sincere thanks and appreciation.

Sincerely,
Elaine F. Pinckney
Superintendent of Schools

Schedule of Student Enrollment
St. George School District
Kindergarten, Grades 1-12, and EEE

Kindergarten and EEE	2012-13 Actual	2013-14 Actual	2014-15 Actual	2015-16 Actual	2016-17 Actual
Williston - EEE	3	0	0	3	2
Williston - K	6	11	3	3	6
Hinesburg - EEE	0	0	0	0	0
Hinesburg - K	0	0	0	0	0
TOTAL	9	11	3	6	8

Grades 1-8	2012-13 Actual	2013-14 Actual	2014-15 Actual	2015-16 Actual	2016-17 Actual
<i>CSSU Schools</i>					
Williston	60	59	70	73	64
Shelburne	0	0	0	0	0
Hinesburg	1	1	0	0	0
<i>Non-CSSU Schools</i>					
Burlington	0	0	0	0	1
TOTAL	61	60	70	73	65

Grades 9-12	2012-13 Actual	2013-14 Actual	2014-15 Actual	2015-16 Actual	2016-17 Actual
CVU	34	38	37	46	54
South Burlington	4	2	1	0	0
Vergennes	0	0	0	0	1
Holderness School	0	0	0	0	0
Vermont Commons	0	0	0	0	2
Waldorf High School	0	0	2	3	5
Mt. Mansfield	1	0	0	0	0
St. Johnsbury Academy	0	0	0	0	0
Vermont Academy	0	0	0	0	0
Burlington	1	0	0	0	0
Essex High School	0	0	0	0	0
Rock Point	0	0	0	0	0
TOTAL	40	40	40	49	62
TOTAL ALL STUDENTS	110	111	113	128	135



TOWN OF ST. GEORGE

21 Barber Road
St. George VT 05495
WWW.STGEORGEVERMONT.COM

PRSRT STD
U.S. Postage
PAID
Williston VT
Permit No. 56

ECRWSS
Postal Patron
St George VT 05495

TOWN MEETING: 6:00 PM
Little Red Schoolhouse