

# Net Energy Metering Policy

---

Senate Committee on Natural Resources and Energy

April 12, 2019

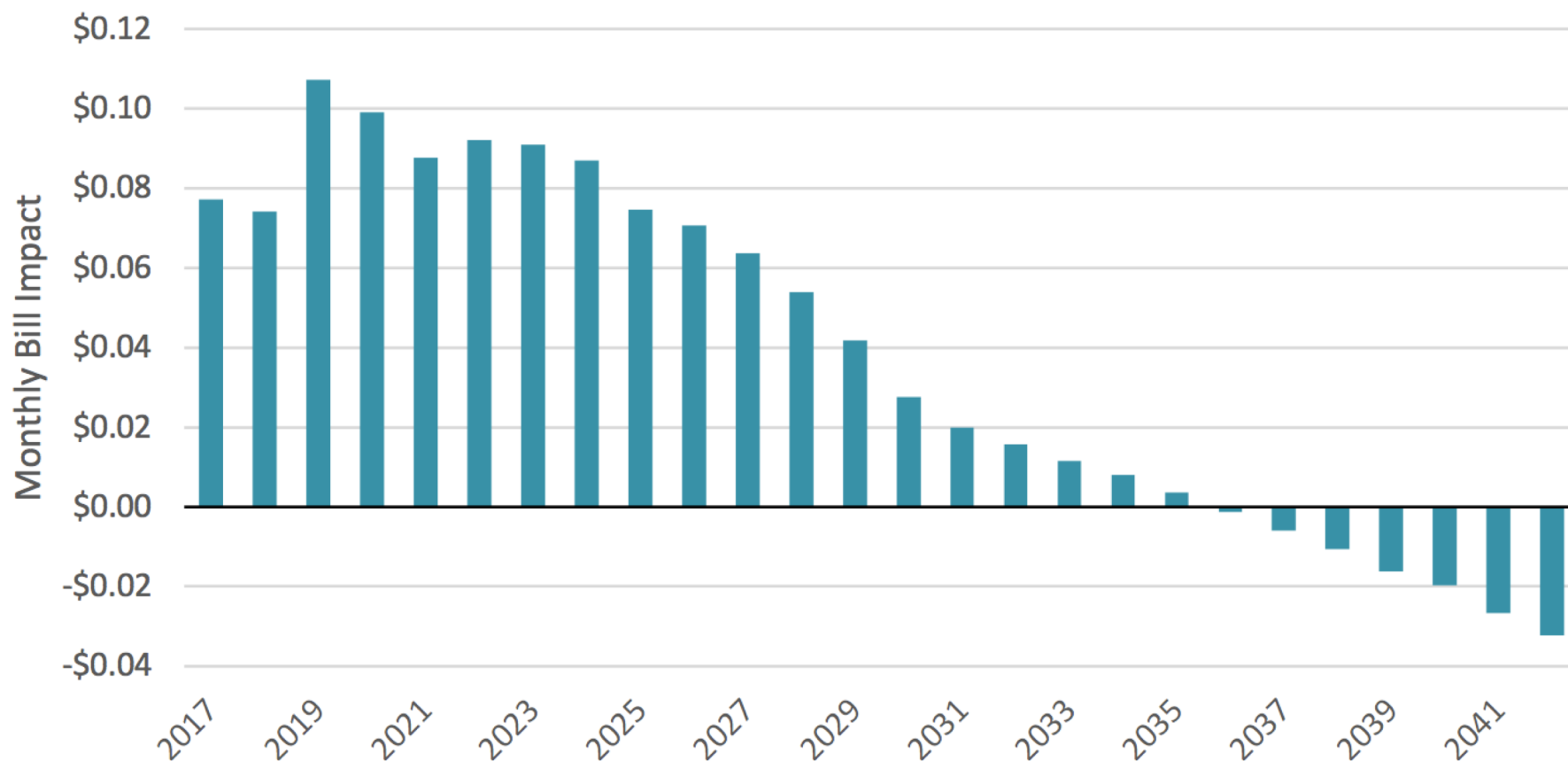
Thomas Vitolo, PhD

# Synapse Energy Economics

---

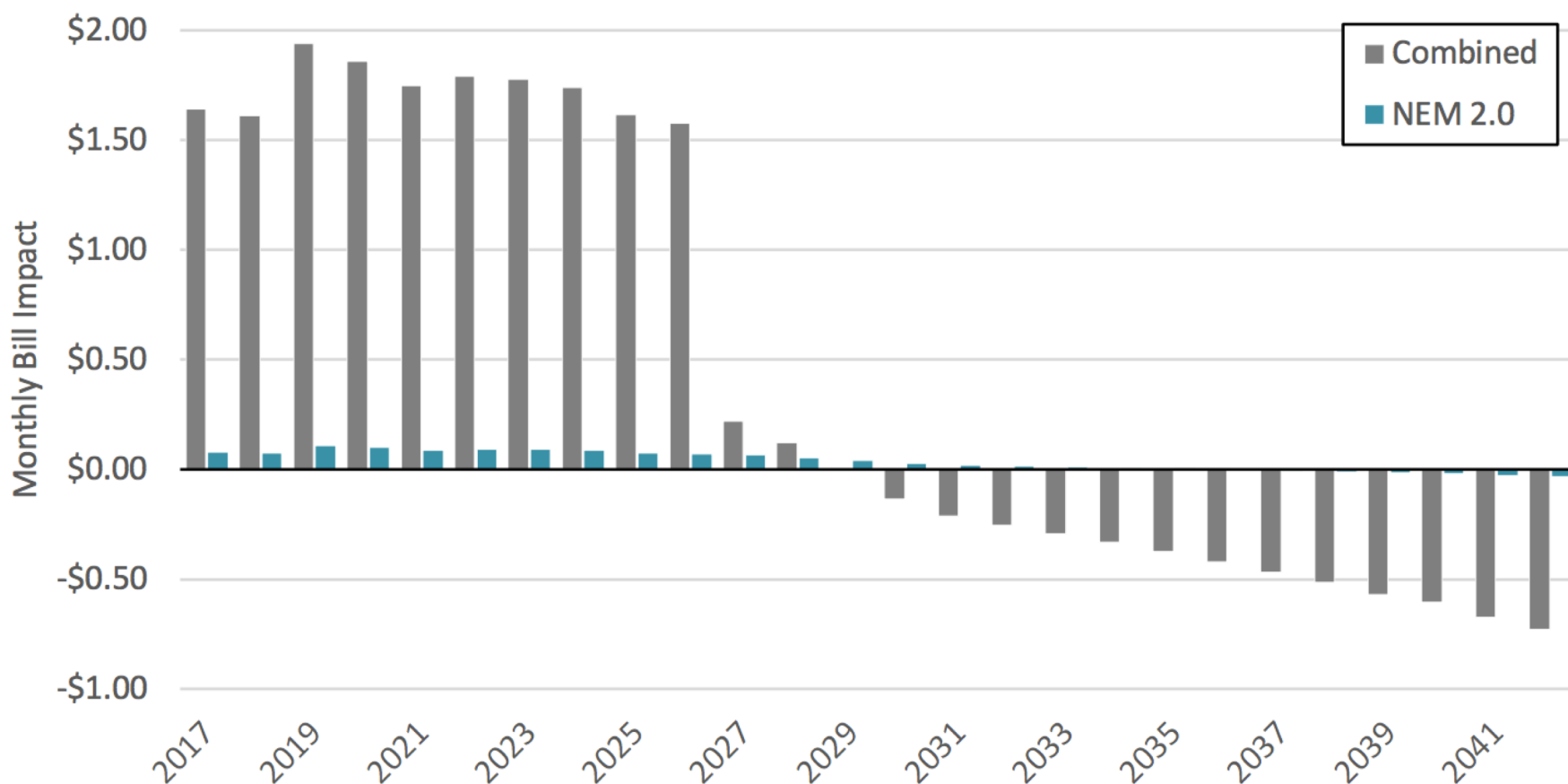
- Founded in 1996 by CEO Bruce Biewald
- Leader for public interest and government clients in providing rigorous analysis of the electric power sector
- Staff of 30 includes experts in energy and environmental economics and environmental compliance

# Residential Bill Impacts, NEM 2.0



Source: Thomas Vitolo and Melissa Whited, *Net Metering in Vermont*, March 15, 2018. Figure 2.

# Residential Bill Impacts, NEM 1.0 & 2.0



Source: Thomas Vitolo and Melissa Whited, *Net Metering in Vermont*, March 15, 2018. Figure 3.

# NEM as Policy in Vermont

---

- Fosters right-sized installations
- Fosters well-placed installations
- Success is shared throughout the state, not tied to a small number of installations
- Consistent with climate goals and Comprehensive Energy Plan goals
- Non-participants indifferent to cost
- Participants benefit from choice of electric supplier
- Requires no capital investment from utility or state government
- Maintains a popular program enabled by the legislature

# Contact Information

Dr. Thomas Vitolo  
[tvitolo@synapse-energy.com](mailto:tvitolo@synapse-energy.com)

The Honorable Tommy Vitolo  
[Tommy.Vitolo@mahouse.gov](mailto:Tommy.Vitolo@mahouse.gov)