



Lamoille Valley Rail Trail: Update on Construction, Sign Plan, Management Plan & Congressional Earmark

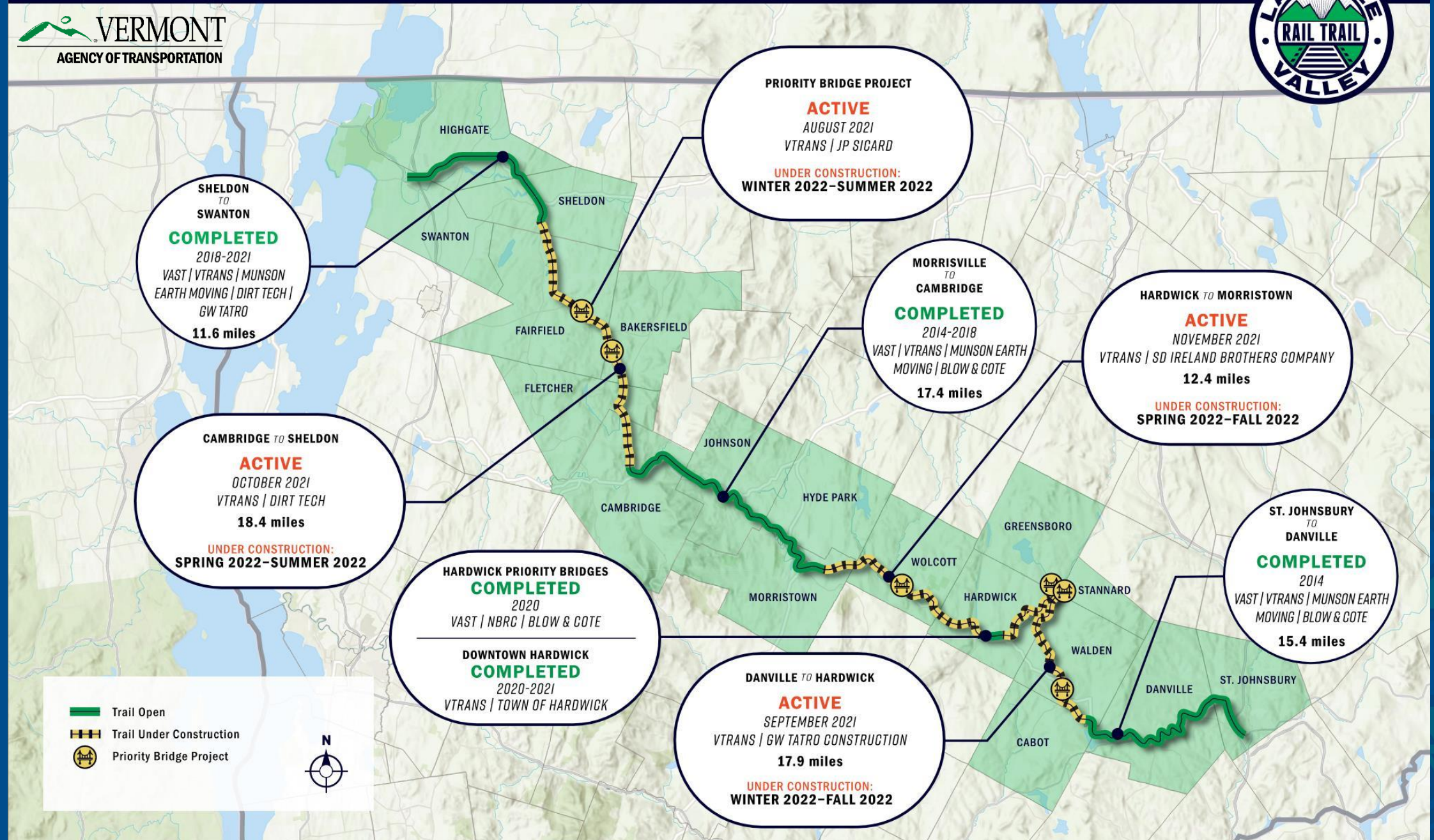
**Senate Institutions Committee
April 12, 2022**



Construction Update



Trail Construction Update



| Projects-Segments | 2014 | 2015 | 2016 | 2017 | 2018 | 2019 | 2020 | 2021 | 2022 |
|--|--|------|--|------|--|---|---|------------------------|------------------------|
| St. Johnsbury TO Danville 15.4 MILES | Completed by VAST/VTrans Munson Earth Moving Blow & Cote | | | | | | | | |
| Danville TO Hardwick 17.9 MILES | | | | | | Awarded: GW Tatro Construction, September '21 Under Construction | | ACTIVE VTrans | |
| Hardwick TO Morristown 12.4 MILES | | | | | | | Awarded: SD Ireland, November '21 Under Construction | | ACTIVE VTrans |
| Morristown TO Cambridge 17.4 MILES | | | Completed by VAST/VTrans Munson Earth Moving Blow & Cote | | | | | | |
| Cambridge TO Sheldon 18.4 MILES | | | | | | Awarded: Dirt Tech Company, October '21 Under Construction | | ACTIVE VTrans | |
| Sheldon TO Sheldon Junction 1.5 MILES | | | | | Completed by VAST/VTrans Munson Earth Moving | | | | |
| Sheldon Junction TO Highgate 6.2 MILES | | | | | | | Completed by VAST/VTrans Dirt Tech | | |
| Highgate TO Swanton 3.9 MILES | | | | | | | Completed by VAST/VTrans GW Tatro | | |
| Priority Bridges Project | | | | | | Awarded: JP Sicard, August '21 Under Construction | | ACTIVE VTrans | |

LVRT(10) – Bridge project; Contract awarded to J. P. Sicard, Inc.
Construction contract amount: \$3,472,258.50. Completion date August 31, 2022.

LVRT(11) – Sheldon Jct. to Cambridge; Contract awarded to Dirt Tech Company, LLC. Construction contract amount: \$2,476,651.15.
Completion date November 12, 2022.

LVRT(12) – Morrisville to Hardwick; Contract awarded to S. D. Ireland Construction. Construction contract amount: \$6,986,878.50.
Completion date November 10, 2022.

LVRT(13) – Hardwick to West Danville (Joes Pond); Contract Awarded to G. W. Tatro Construction, Inc. Construction contract amount: \$2,254,046.00. Completion date November 12, 2022

Sign Plan - What it IS



- Review of best practices from other trail systems throughout the country.
- Recommendations for a cohesive set of off-facility signs including how to find the trail from the State Highway and Local Roads and on-trail signs including mile markers, town lines, and geographic destinations.
- Solicitation of input from RPC's, VAST, VTrans and other important stakeholders.
- Development of plans, specifications and an estimate for this project be bid.



Sign Plan - What it is **NOT**

- Temporary traffic control during construction
- Signs pointing users to individual businesses, services or attractions.
- Interpretive signage detailing features of historic or environmental significance along the trail.

Sign Plan Timeline

- Complete review, outreach and development of plans, specifications and estimate Fall of 2022.
- Bid for construction Winter 2022/Spring 2023.
- Construction begins Spring 2023.

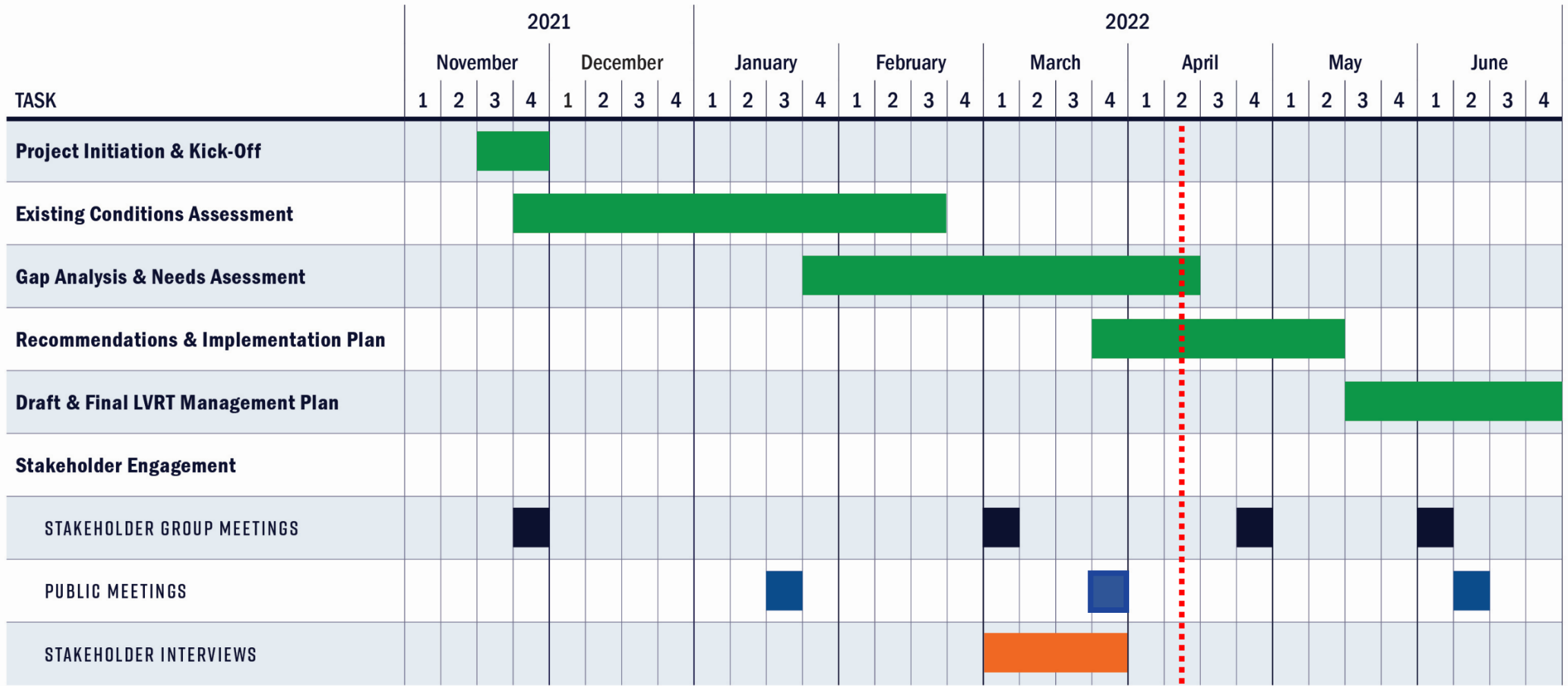
Development of the Management Plan



LVRT Management Plan

- Trail Completion in Fall of 2022
- Existing VAST Management Plan adopted in 2016
- Management responsibilities shifting from VAST to VTrans on July 1, 2022
- Management Plan needed to:
 1. Describe a cohesive vision for the completed trail
 2. Identify long-range strategies for the management, maintenance, and operations of the trail
 3. Support opportunities for community economic development efforts along the LVRT
 4. Provide a model Management Plan framework for the management of other rail trails in Vermont

Where we are...





Public Input to Date

- Public Hybrid Meetings (3) | Jan. 25, Mar. 29 and Apr. TBD
- Stakeholder Group Interviews (5) | February – March 2022
- Stakeholder Committee Mtgs (4) |
- Website & Crowdsourcing Input Tool | Ongoing

Stakeholder Sessions

- 5 Groups
- February – March 2022
 - Northeast Region
 - Lamoille County Region
 - Northwest Region
 - Outdoor Recreation and Transportation Organizations & Businesses
 - Open Session

START LVRT Stakeholder Session


Welcome to the LVRT Management Plan Stakeholder Session for the Northeast Region!

Meeting Goal:
Gather insights, ideas and concerns regarding the long term management of the 93-mile trail system.

Purpose of the Management Plan:
- Describe a cohesive vision for the completed trail
- Identify long-range strategies for the management, maintenance, and operations of the trail
- Support opportunities for community economic development efforts along the trail and in trailside communities
- Provide a framework for management of other rail trails in Vermont

Background

- Railroad built in 1877
- Railbanking approved in 2004
- VAST began rehabilitation of the corridor in 2006
- 2013-2018 VAST completed 33 miles of trail
- In 2018 VTrans assumed responsibility for construction of remaining segments
- July 1, 2022 the management shifts to VTrans
- Completion of the trail Fall 2022
- Corridor spans across 5 counties connecting 18 towns
- Once complete, the trail will be the longest rail trail in New England



Introductions

Please introduce yourself

- What is your name?
- What organization do you represent?
- What do you look forward to most regarding the completed LVRT?

| | | | | | | |
|--|---|---|--|--|--|--------------------------------------|
| David Snedeker Executive Director NVDA | Eric Bertisch Hardwick Selectboard Recreation Committee | Geoff Gervase Hardwick Community Development Coordinator | Dan Prud'homme Greenboro Planning Commission | Randolph Wilson Walden Selectboard | Ran Lindsay Danville Selectboard | Senator Jane Kitchel NVDA Board |
| Chad Whitehead St. Johnsbury Town Manager | Joe Karpman St. Johnsbury Acad. Town Manager | Joe Pile St. Johnsbury Academy Director/Head of VT Chamber of Commerce | Marie Rosemond Canaan Director/Head of VT Chamber of Commerce | Gillian Seaville St. Johnsbury Downtown Coordinator | Shirley McCracken Hardwick Recreation Committee | David Upson Hardwick Town Manager |

1

When construction on the trail is complete, what is the one project improvement/enhancement you see as most critical to your community?

★ ★ ★ ★ ★

2

What do you anticipate being a barrier to your community using the trail or benefiting from users on the trail?

★ ★ ★ ★ ★

3

Are there projects/improvements/enhancements that your community has planned for in anticipation of the trail being complete?

★ ★ ★ ★ ★

4

What concerns you the most about the completed trail? Are there issues you anticipate for your community?

★ ★ ★ ★ ★

5

Are there programs, educational opportunities, or events related to the trail that your community has planned for or you would like to see?

★ ★ ★ ★ ★

6

Is there anything else we should know or that you wish we had asked about?

★ ★ ★ ★ ★

Idea Prioritization


FINISH

Please reach out to us with any ideas, questions, or concerns.


Website: <https://vtrans.vermont.gov/lvrt/>

Contact Info:
Elisabeth Sundberg
esundberg@vnh.com

Crowdsource Input Tool



Crowdsource Input Tool



VERMONT
AGENCY OF TRANSPORTATION

LVRT Issues & Opportunities Feedback

Sign In ?

+

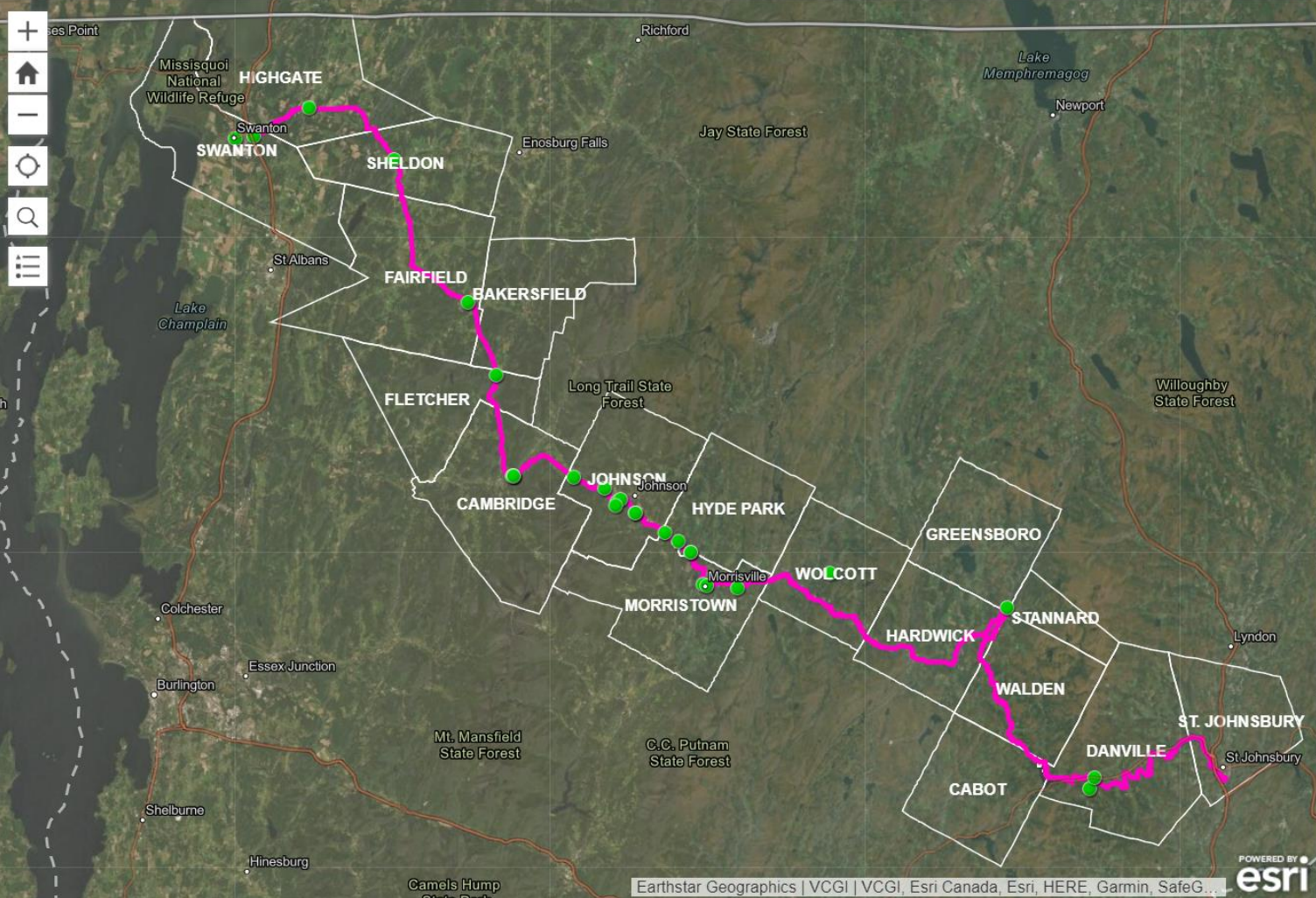
Home

-

Layers

Search

Menu



LVRT Comments

+ Add Comment

With a rail trail of this length it will be a desti...6♥

It might be a good idea to stress the opportu...4♥

The Sheldon junction connecting the MVRT a...4♥

Ongoing efforts to control invasive Japanese...3♥

With all the varied users, it makes sense for ...2♥

Public Bicycle Repair Station1♥

Highly suggest the trail be paved because it ...1♥

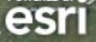
It would be wonderful to connect this to the ...1♥

Add signage for Cambridge Greenway0♥

Informal Parking- Approx. 6 spots0♥

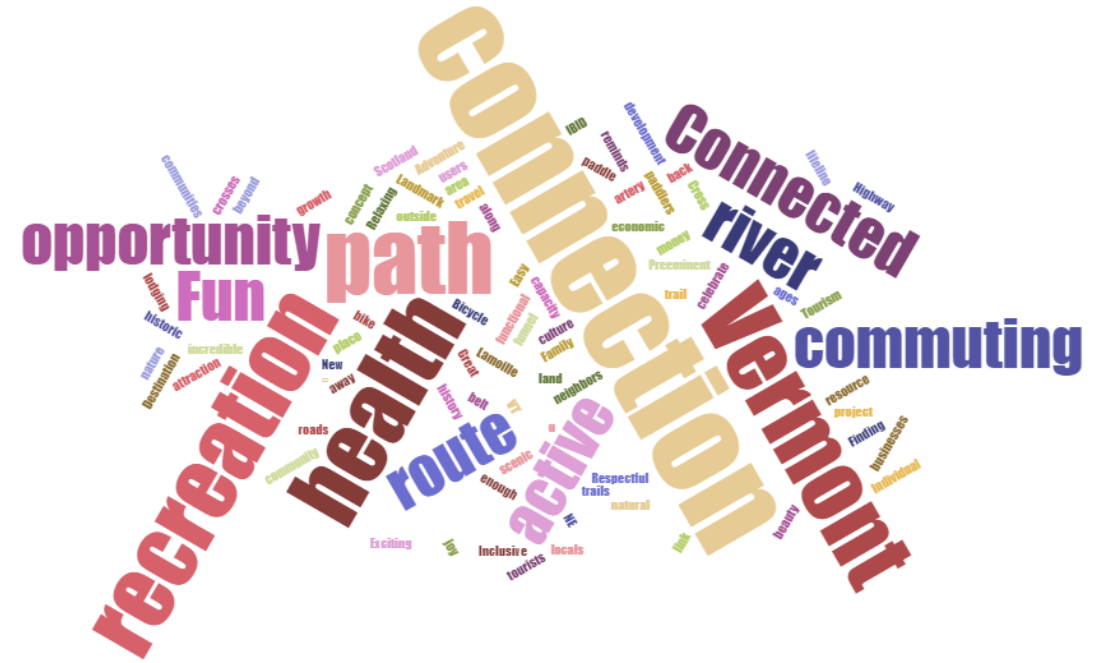
Formal Parking- Approx 50 spots0♥

Possible site for restored bridge to connect L...0♥

Earthstar Geographics | VCGI | VCGI, Esri Canada, Esri, HERE, Garmin, SafeG...

DRAFT Vision Statement

The Vision for the Lamoille Valley Rail Trail is a year-round, multiuse recreation and alternative transportation corridor that is well-maintained and supports economic vitality, fosters community connections, and promotes healthy lifestyles across scenic, northern Vermont.



Development of the Management Plan

1. Stakeholder Input



2. Summarize Input by Categories

- Recreation (26)
- Services (13)
- Trailside Amenities (13)
- Allowable Uses (13)
- Maintenance (13)

- Safety (10)
- Culture (9)
- Trans. Connections (8)
- Access / Trailheads (7)
- Health (6)

- Accessibility / Inclusivity (5)
- Town Centers / Villages (5)
- Construction (5)
- 30 Additional Comments

3. Screen Ideas through Vision & Goals

VISION & GOALS

4. Develop Recommendations



Management



**Maintenance &
Operations**



**Economic Development &
Community Connections**



Management

- Define Roles & Responsibilities
 - Statewide Rail Trail Manager
- Policies and Procedures
 - Planning & Budgeting
 - Right-of-Way Use Agreements
 - Special Uses & Permits
 - Allowable Uses & User Conflicts
- Coordination of Activities & Personnel
- Coordination with municipalities, trail and volunteer organizations, RPCs, contractors, and many others.



Maintenance & Operations

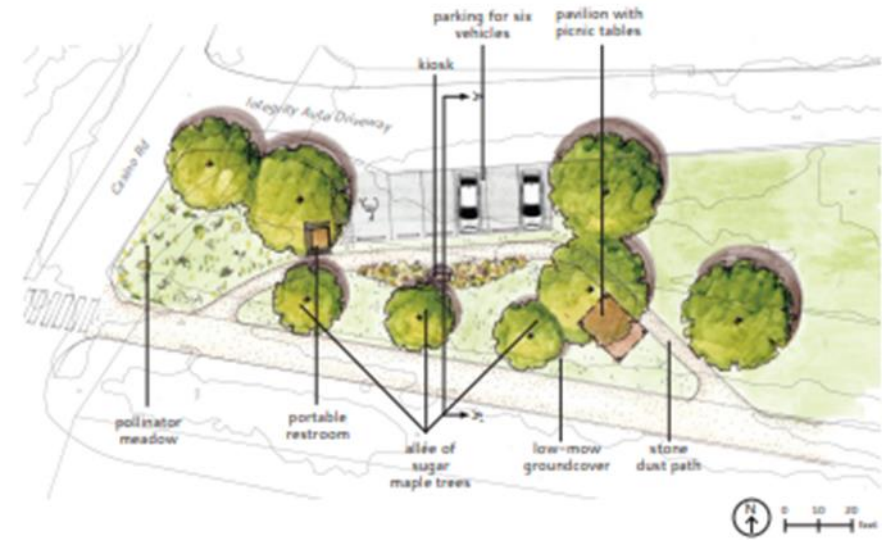
- Asset Condition Assessments
 - Frequency of asset inspection & routine maintenance
- Maintenance Plan
 - Seasonal Maintenance & Operations
 - Example: Mowing, tree clearing, surface management, grooming
 - Special Projects
 - Example: Surface management, bridge/culvert repairs, trail enhancements
- Trail Access, Trailheads, Trailside Amenities





Economic Development & Community Connections

- Community Connections
 - Trailheads & Trail Access Points
 - Connecting Paths, Sidewalks, Trails
 - Wayfinding
- Trip Planning & Information Sharing
 - LVRT Website
 - Mobile Apps
- Events & Programming



Congressional Earmark



Sanders Earmark – March 15th Notice from Senator Sanders' office

- \$2M awarded and now available
- Specifically, this investment will fund community projects to improve the function of the trail including but not limited to trail infrastructure, such as trailheads, picnic areas, kiosks, and connections to downtowns; signage; art and history installations; marketing efforts; and ambassador programs.
- Additionally, this investment could fund a study and 10-year overarching master plan for the trail, which will include a recommendation as to whether the trail should ultimately become a state park.



Amy Bell, VTrans Management Plan Project Manager

802-279-0783 | amy.bell@vermont.gov

Joel Perrigo, VTrans Construction Project Manager

802-595-4933 | Joel.Perrigo@Vermont.gov

Jackie Cassino, VTrans Rail Trail Manager

802-505-9193 | jackie.cassino@vermont.gov

<https://vtrans.vermont.gov/lvrt>

[Crowdsource Input Tool](#)

