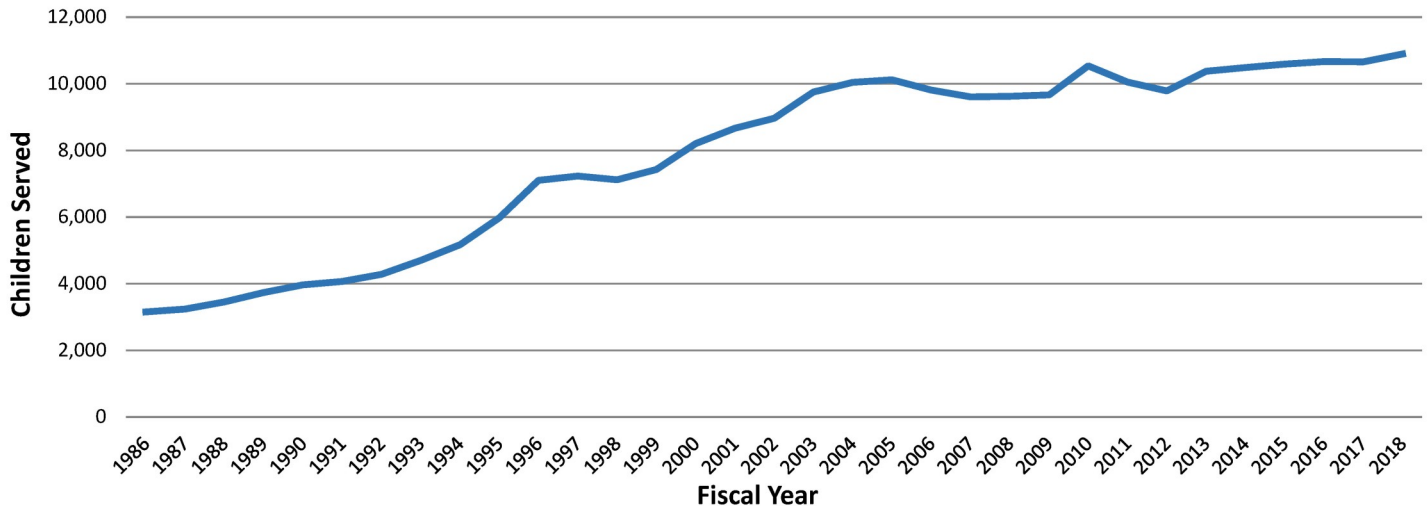


Agency of Human Services & Community Partners Exploratory Meeting : Data Overview

Child, Youth and Family Mental Health Services

Number of Children Served FY1986 - FY2018



Emergency Room Visits and Emergency Room Wait Times

Patient Type	Total # Discharges	Total # Bed Days	Length of Stay in Days (Mean)	Length of Stay in Days (Median)
Children (input ED)	32	13	0.4	0
Children (output ED)	1,628	1,392	0.9	0
Adults (input ED)	1,553	2,659	1.7	2
Adults (output ED)	6,886	4,677	0.7	0
Total	10,099	8,741	0.9	4

In total, Children's ED visits comprise both 16% of the total number of discharges (visits) and 16% of the total ED bed days. There were 32 inpatient ED records, which are likely children waiting in the ED with primary MH diagnosis who are admitted to the hospital for physical health concerns. On average, children waited almost one day before leaving the ED,

Patient Type	Total # Discharges	Total # Bed Days	Length of Stay in Days (Mean)	Length of Stay in Days (Median)
Children (voluntary)	1589	1180	0.7	0
Children (involuntary)	71	225	3.2	2
Total	1660	1405	0.8	2

When looking at legal status, children waiting involuntarily in EDs wait 3.2 days on average, with over 50% of children waiting 2 days or more. This population looks significantly higher than the voluntary figures, but the voluntary figures also include children in the ED who ultimately don't go to inpatient care. The waits for involuntary children (3.2 days) are similar to the waits recorded for all involuntary stays in EDs (3.1 days).

Youth Waiting for Placement CY 2014 – 2018

All Involuntary Waits in EDs - Regardless of Outcome Disposition/Outcome

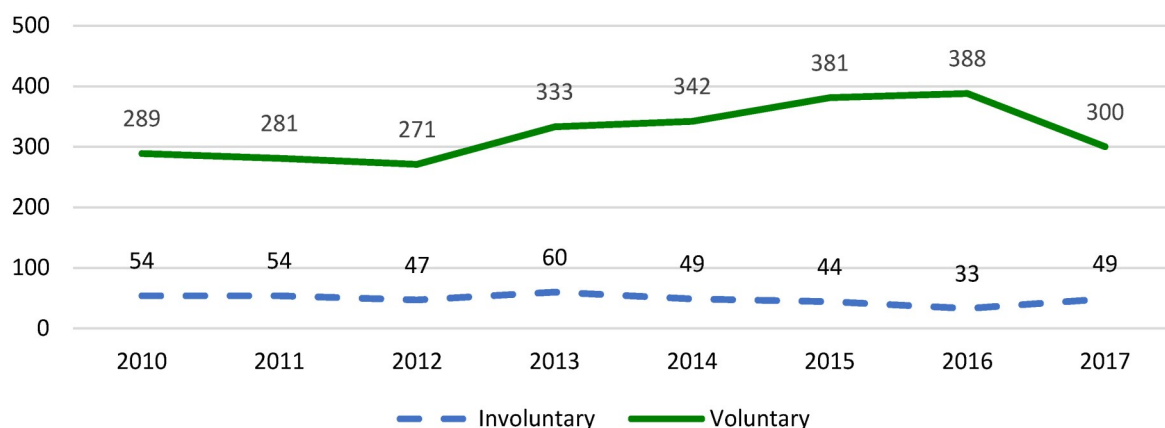
Disposition/Outcome	CY14	CY15	CY16	CY17	CY18	Total	% of Total	Mean Wait time in hours
Brattleboro Retreat	68	55	53	48	52	276	87%	48.56
Crisis Bed	0	1	0	1	0	2	1%	27.04
DOC	0	0	0	1	1	2	1%	171.79
Home/family/friend	5	1	8	10	13	37	12%	54.97
Other	0	0	0	0	1	1	0%	24
Residential Program	0	0	1	0	0	1	0%	716.85
Total	73	57	62	60	67	319		

Vermont Inpatient Capacity

	FY 2019
Inpatient Children/Adolescent (invol/vol)	30
Crisis Beds Howard Center	6
Hospital Diversion NFI North	6
Hospital Diversion NFI South (In Development Working Toward Capacity of 6)	4
TOTAL Inpatient and Hospital Diversion Capacity FY19	46

All voluntary and involuntary inpatient admissions and children's are paid for and managed by DVHA. There are several children's residential programs but DMH does not contract for a particular number.

Medicaid Paid Children's Inpatient Hospitalizations



Brattleboro Retreat

Children Inpatient Hospitalizations at the Brattleboro Retreat - FFY 2018 (October 1, 2017 – September 30th, 2018)^[1]:

Legal Status	Total # Admissions	Total # Discharges	Length of Stay in Days (Mean)	Length of Stay in Days (Median)
Involuntary	18	18	12.28	10
Voluntary	326	332*	13.59	9
Grand Total	344	350*	13.52	9

Data Notes: Analysis is based on the youth inpatient tracking spreadsheet maintained by the Department of Vermont Health Access (DVHA). DVHA only tracks admissions with primary Medicaid. This includes youth who had an involuntary or voluntary legal status at admission.

**The number of Total Discharges includes individuals who were admitted prior to the start of this reporting period. Most people who were admitted during this period discharged, as well as those who were admitted prior to the reporting period, resulting in a total number of discharges higher than admissions.*

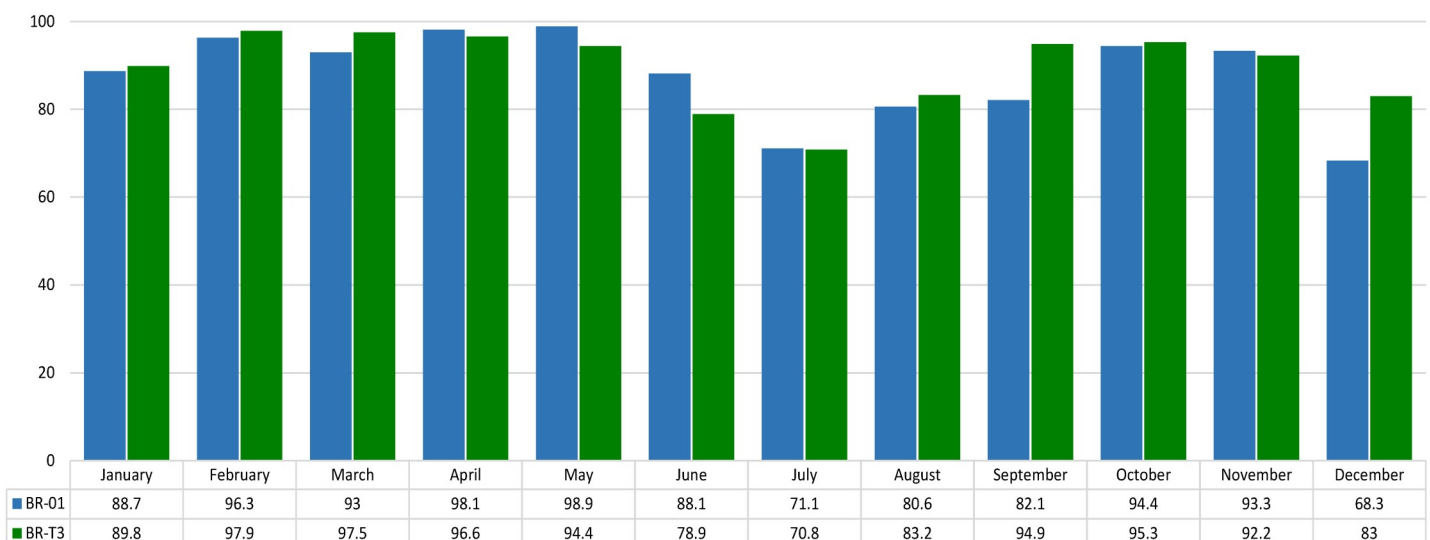
Example: Patient 1 is admitted September 2017 and discharged in October 2017. For purposes of this report, this patient would only be counted as a discharge.

Despite the relatively small population of children served in inpatient settings, demand for this level of care is high and current capacity is being fully utilized. See graphic below of occupancy rates in 2018.

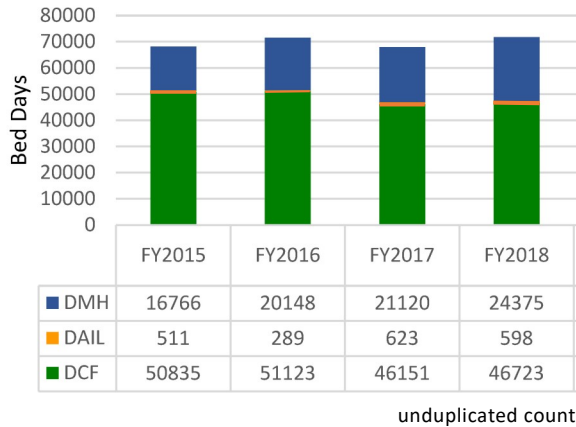
^[1] Excerpted from the Act 200 (2018), Section 7 legislative report submitted 1/31/19.

Brattleboro Retreat Inpatient Occupancy

Child/Youth Inpatient Occupancy 2018

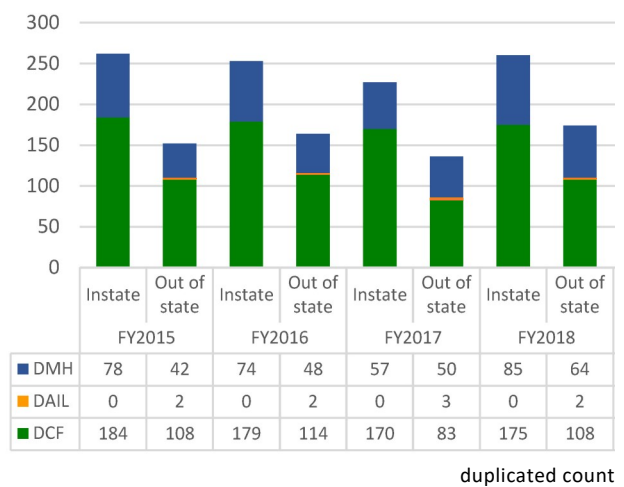
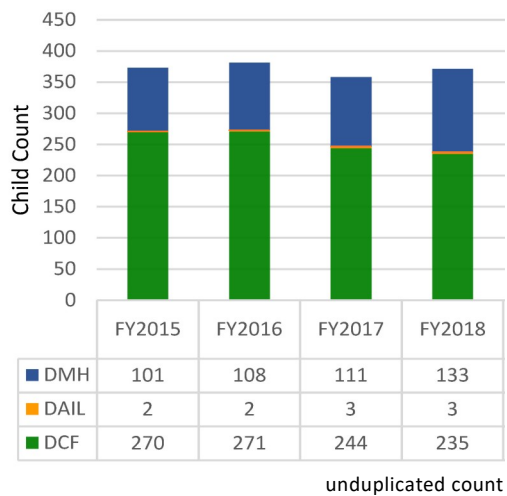


State Residential Data



Total Residential Bed Days by Department

Total Bed Days is the total number of days a child/youth stays overnight in a residential program. For the Total Bed Days chart, children who were placed in more than one program during the fiscal year are represented more than once so that all bed days are calculated.



Total Child Count Residential by Department

For the Total Child Count in Residential by State fiscal year, the number of children/youth is unduplicated within the fiscal year, meaning if a child/youth was placed in more than one residential program during the fiscal year, the child/youth is only counted once.

Instate and Out-of-State Residential Count

This chart represents the total number of in-state and out-of-state placements by funding department and by fiscal year. Children/youth who were placed in more than one facility or had a custody change in a fiscal year are duplicated in the count.

Percent of In-State Versus Out-of-State Placements

Residential
FY 2018

