

**PRELIMINARY BUDGET: PRESIDENT PRO TEM OFFICE**  
28 February 2014

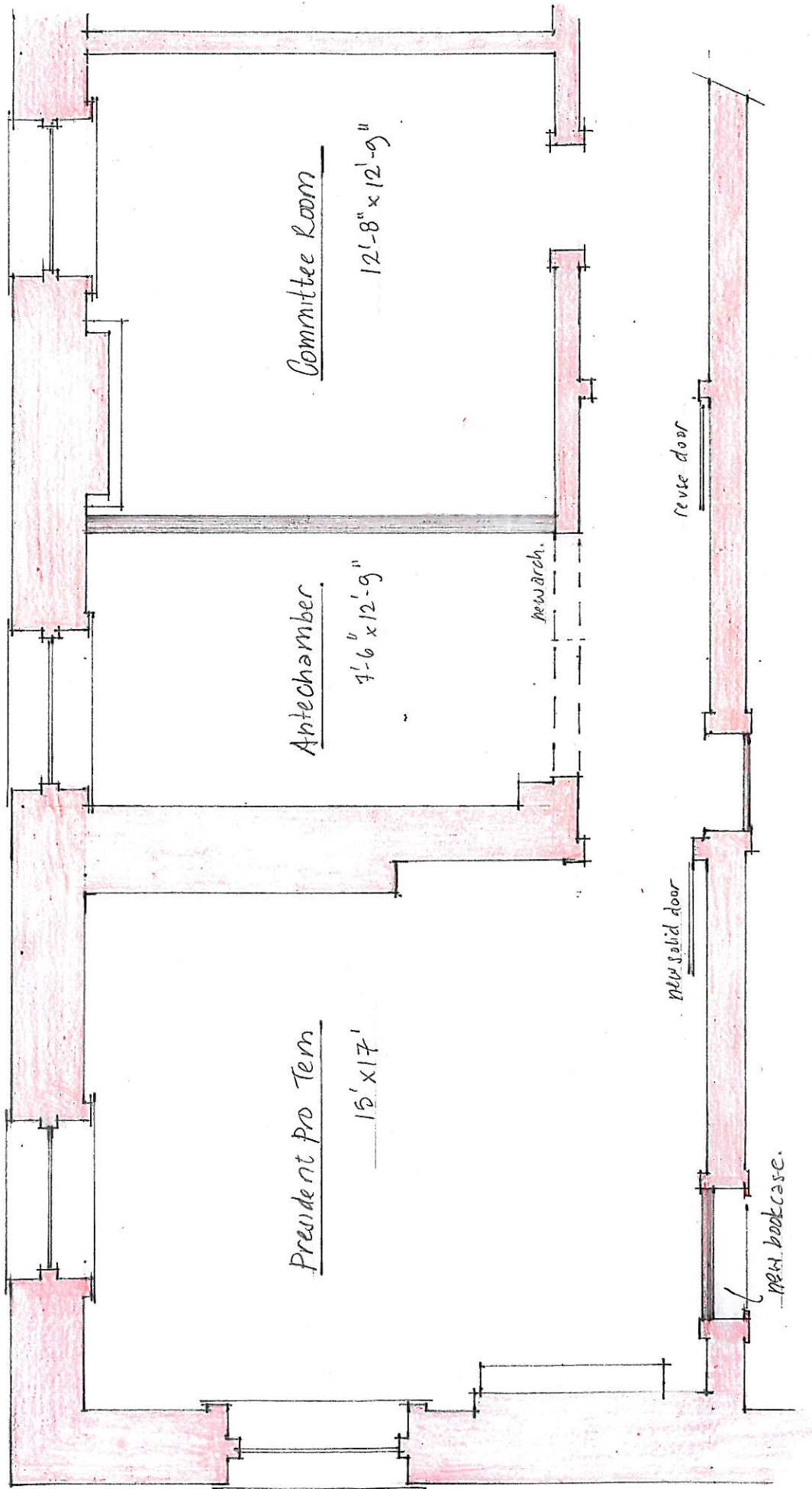
**Option One**

GC/labor and materials (incl. all rough and finish carpentry)	\$26,180
Mechanical	2,000
Electrical	3,000
Security/Data/Telecomm.	6,000
Paint	2,050
Carpet	<u>1,000</u>
COW	\$40,230
BGS admin & engineering	1,200
Bonds, 3%	1,200
Construction permit, 0.55%	200
Contingency, 10%	4,000
Furnishings (new table, chandelier)	<u>10,000</u>
PROJECT COST	\$56,830

**Option Two**

GC/labor and materials (incl. all rough and finish carpentry)	\$12,000
Mechanical	0
Electrical	2,000
Security/Data/Telecomm.	4,000
Paint	1,000
Carpet	<u>800</u>
COW	\$19,800
BGS admin & engineering	800
Bonds, 3%	600
Construction permit, 0.55%	100
Contingency, 10%	2,000
Chandelier	<u>500</u>
PROJECT COST	\$23,800

OPTION THREE Est is similar to Option Two.

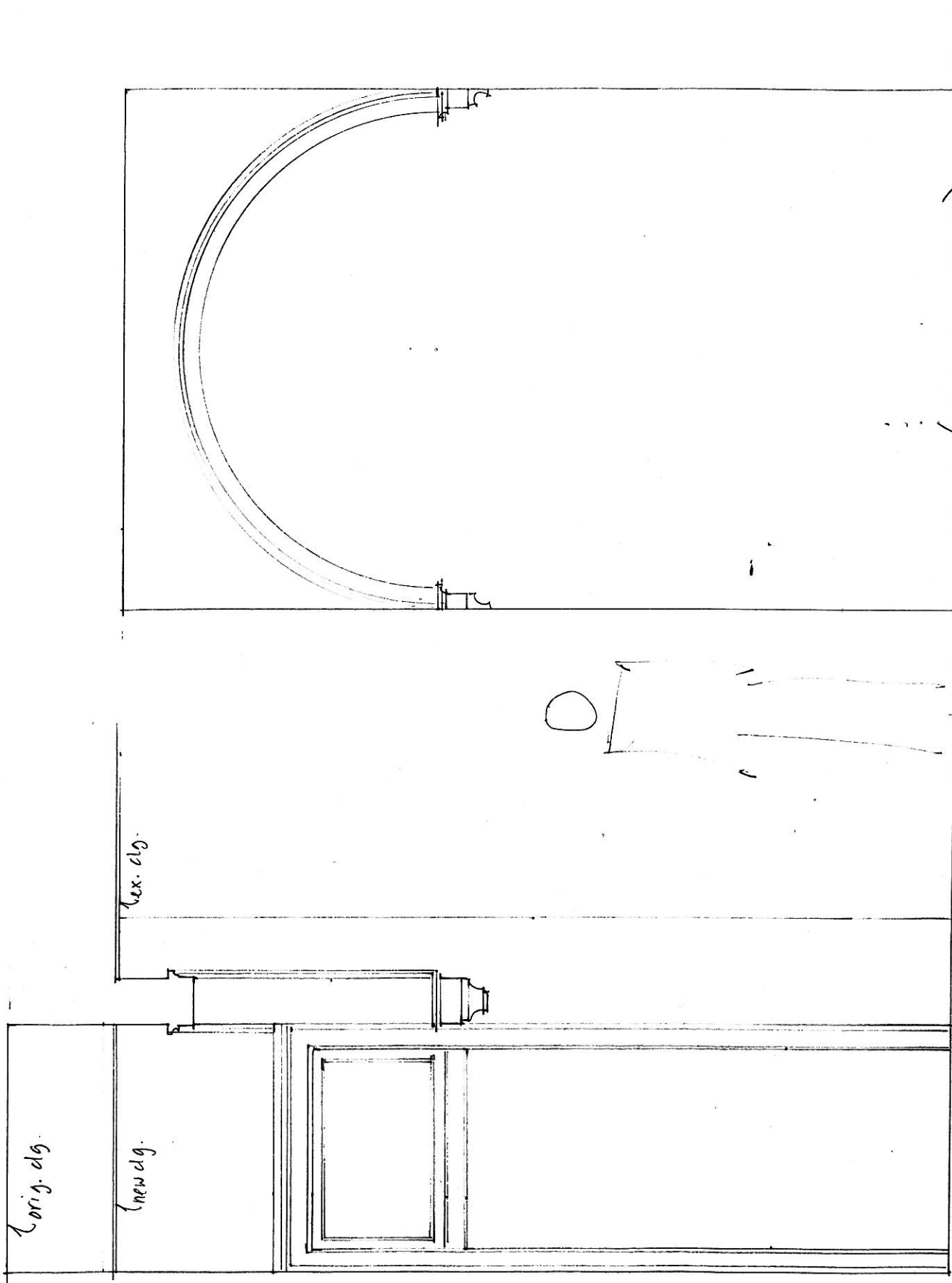


Proposal to Move the President pro Tem's Office

24 Feb 2014

BGS. 1/4" = 1'-0"

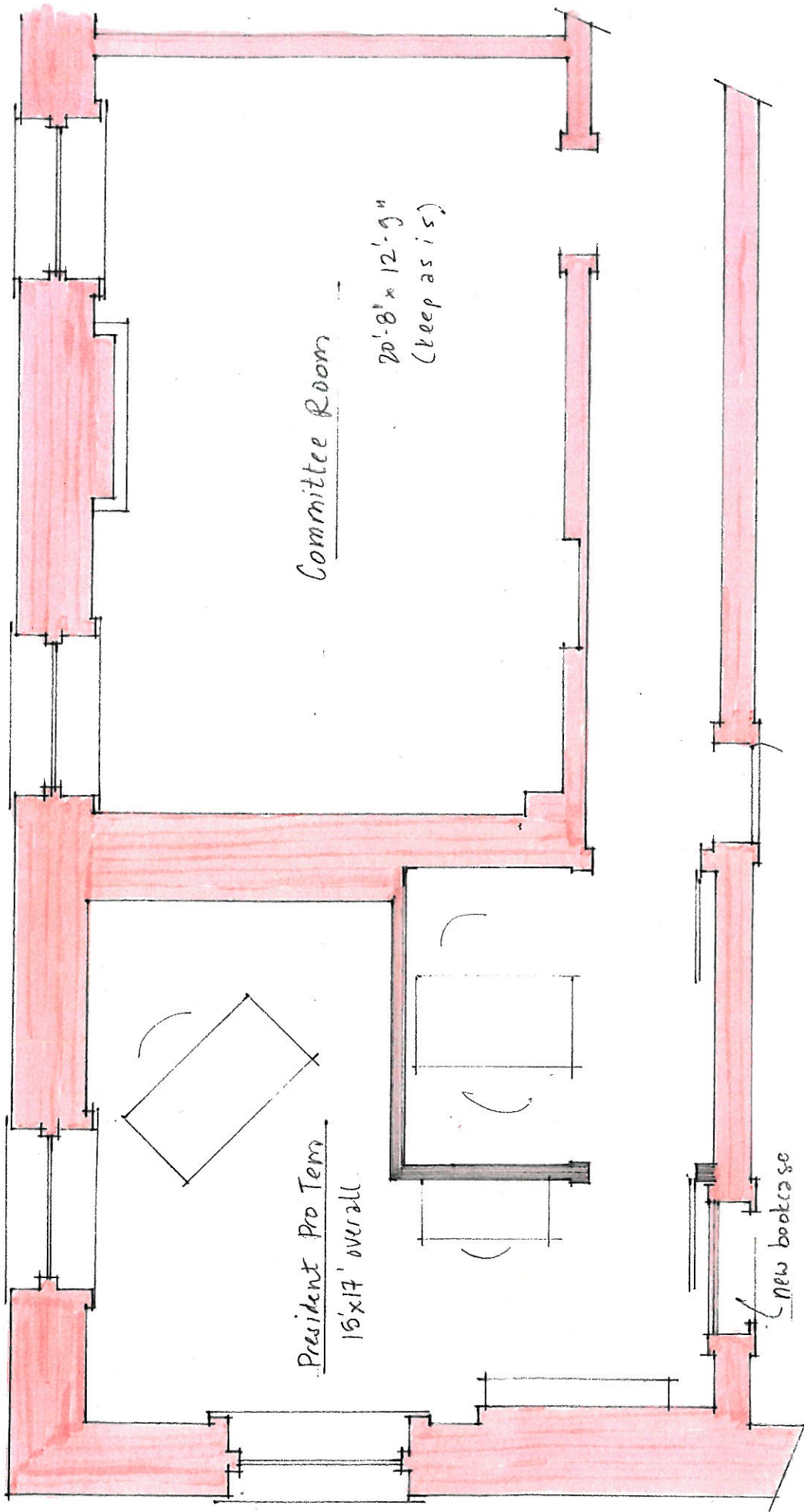
OPTION ONE



- 1/2" = 1'-0"

(OPTION ONE)

New Arch @ Antechamber. 24 Feb 14

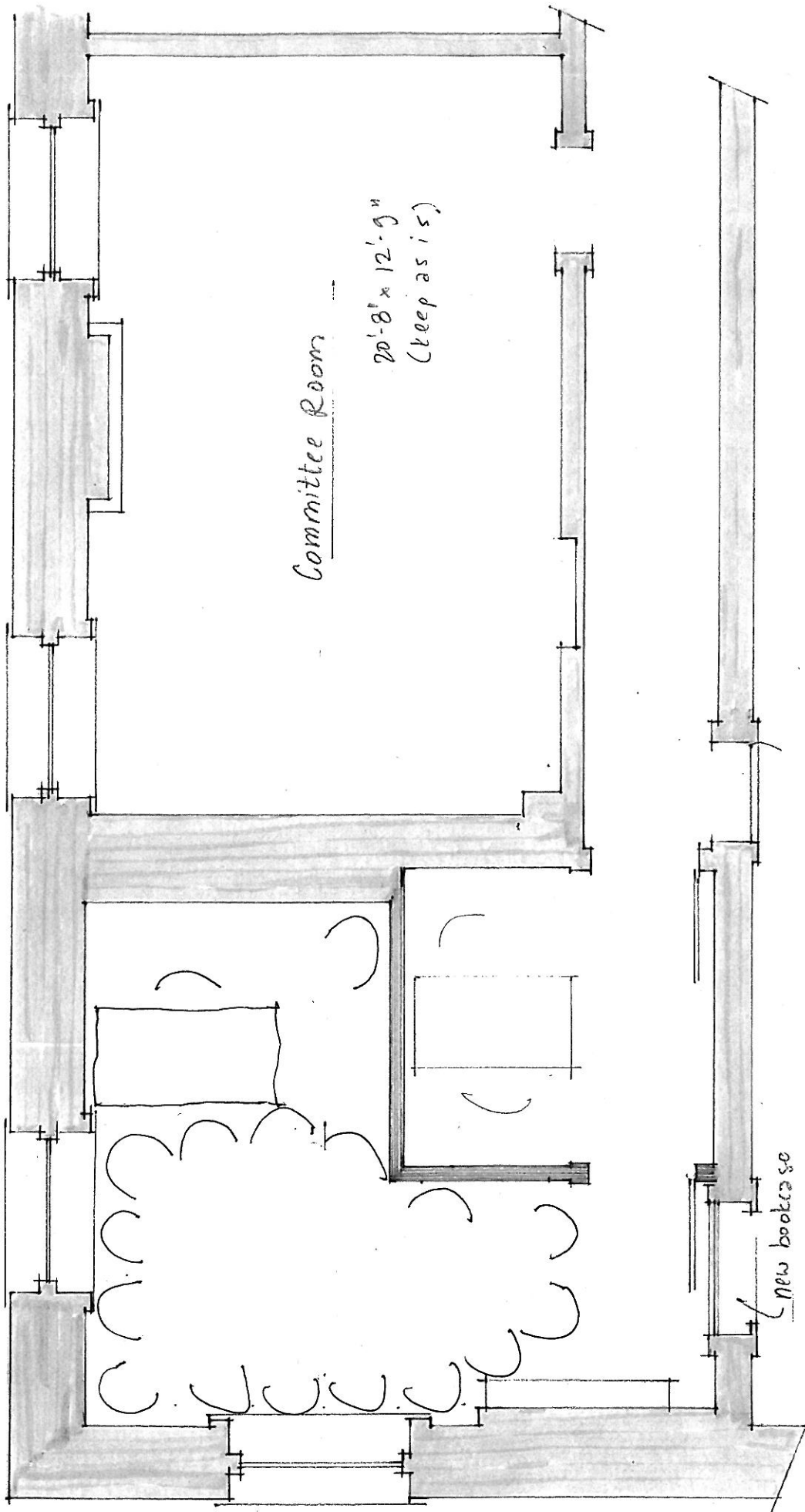


Alternate Proposal to Move the President Pro Tem's office

25 Feb 2014

BGS 1/4" = 1'-0"

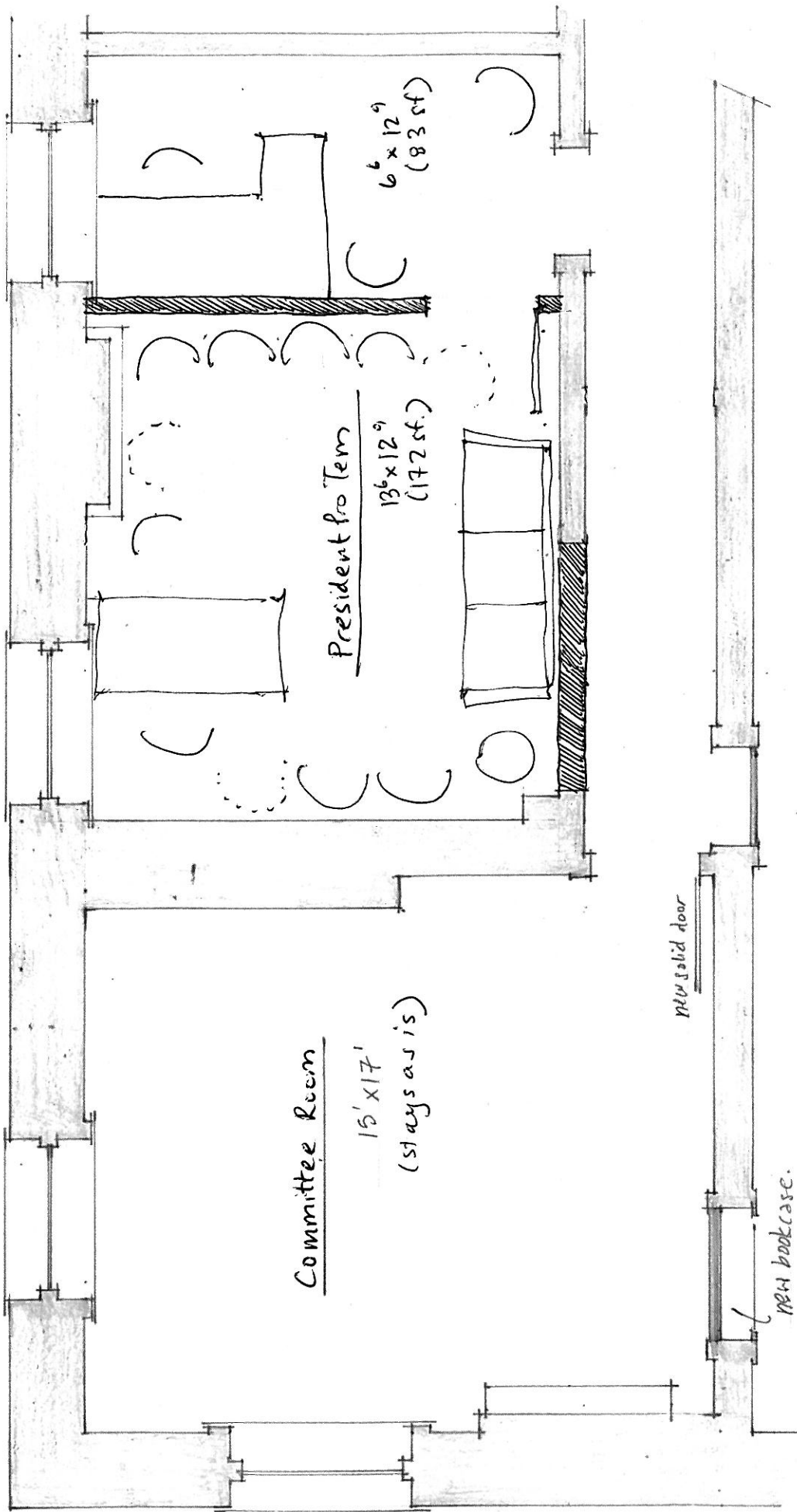
OPTION TWO



Alternate Proposal to Move the President Pro Tem's Office

25 Feb 2014

OPTION 2 SHOWING 15 SEATS



Proposal to Move the President Pro Tem's Office

24 Feb 2014

OPTION THREE

BGS. 1/4" = 1'-0"

# SPACE SIZES FOR ROOMS ASSOCIATED WITH MOVING THE PRESIDENT PRO TEM'S OFFICE

Current President Pro Tem's office	10'-6" x 16'-6"	173 sf
Current Education Committee room	15' x 17'	255 sf
Size with Option 2 reception area deducted	(deduct 8' x 8'-3" = 66 sf)	189 sf
Current Economic Development room	12'-9" x 20'-6"	261 sf
Smaller Committee room in Option 1	12'-8" x 12'-9"	162 sf
Reception/Antechamber in Option 1	7'-6" x 12'-9"	96 sf
Current Agriculture Committee room	11'-8" x 12'-9"	149 sf