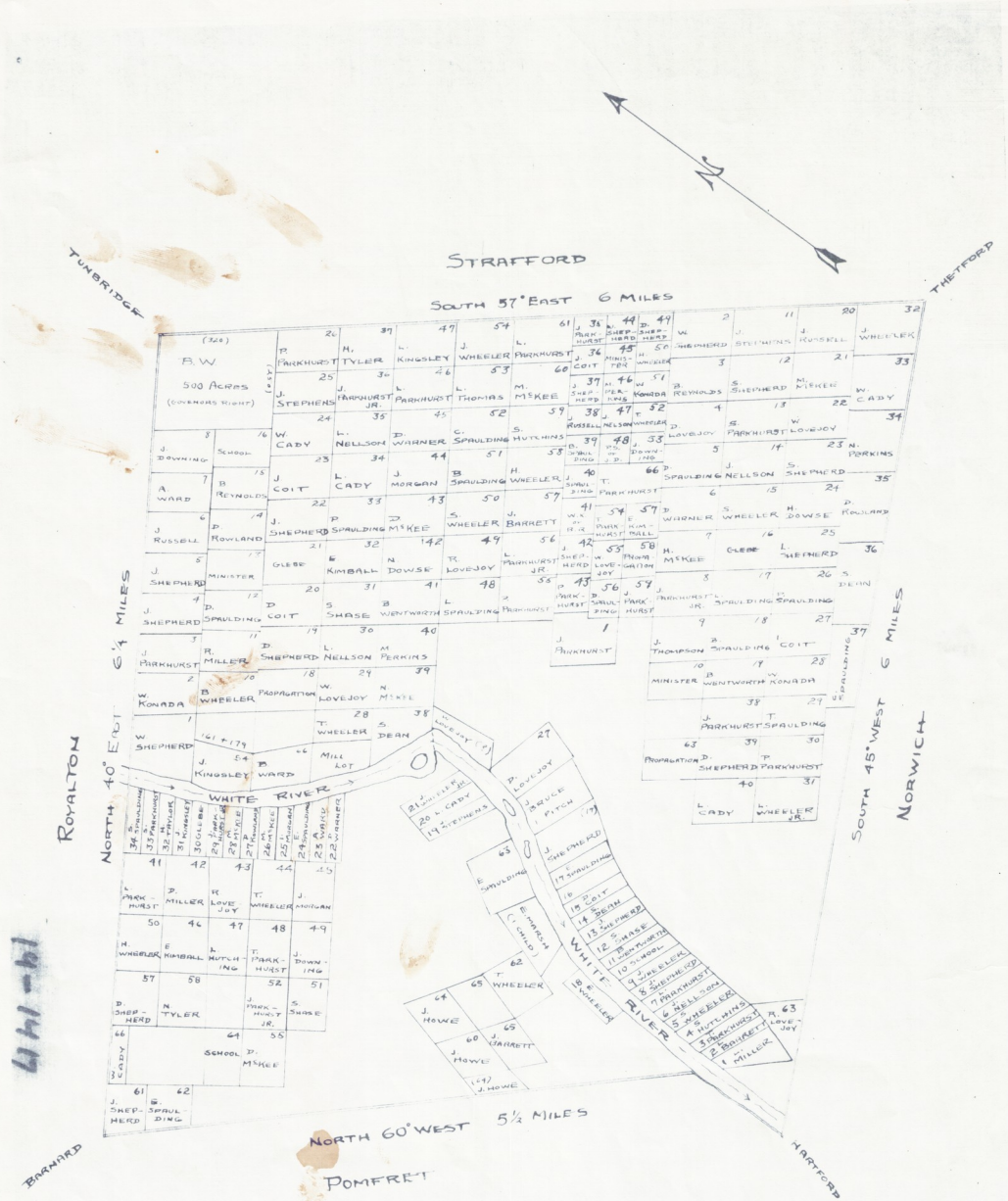


SHARON



SHARON
VT.

19-1417

TAKEN FROM THE ORIGINAL TOWN LOTTING
MAP IN THE OFFICE OF THE TOWN CLERK,
SHARON, VT.
OMITTED FROM THIS MAP ARE THE NAMES
OF THE ORIGINAL PROPRIETORS,
DATED BY RECORDS, 2/24/1950 VT. FOREST SERVICE