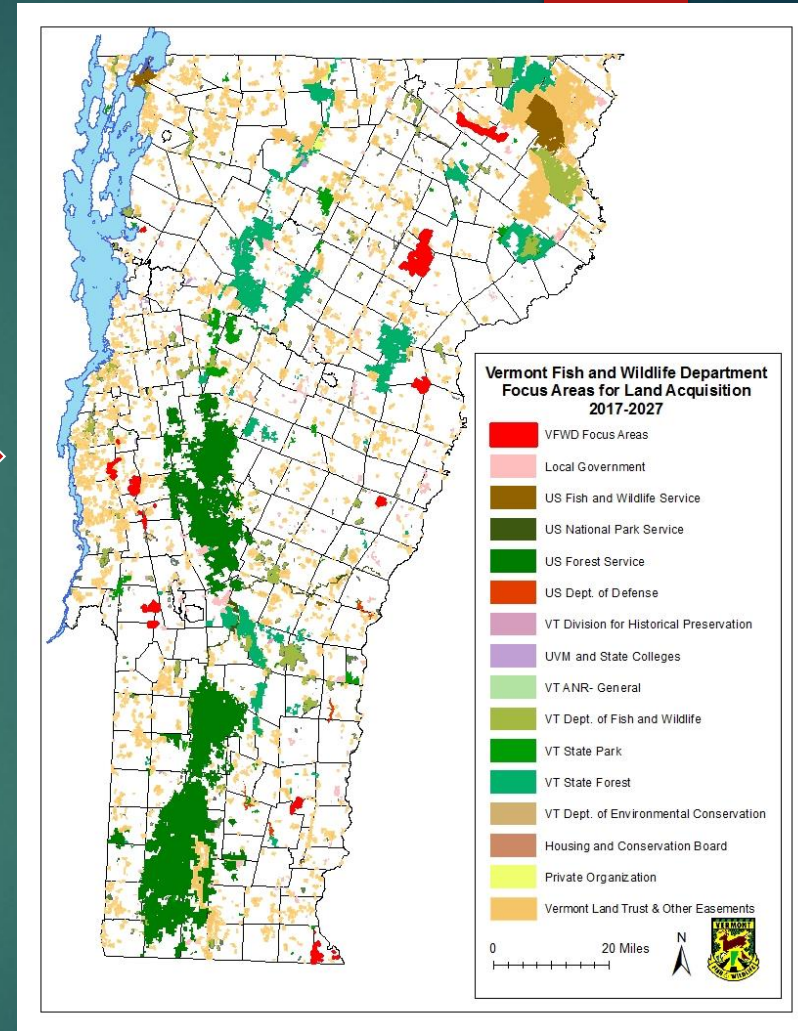
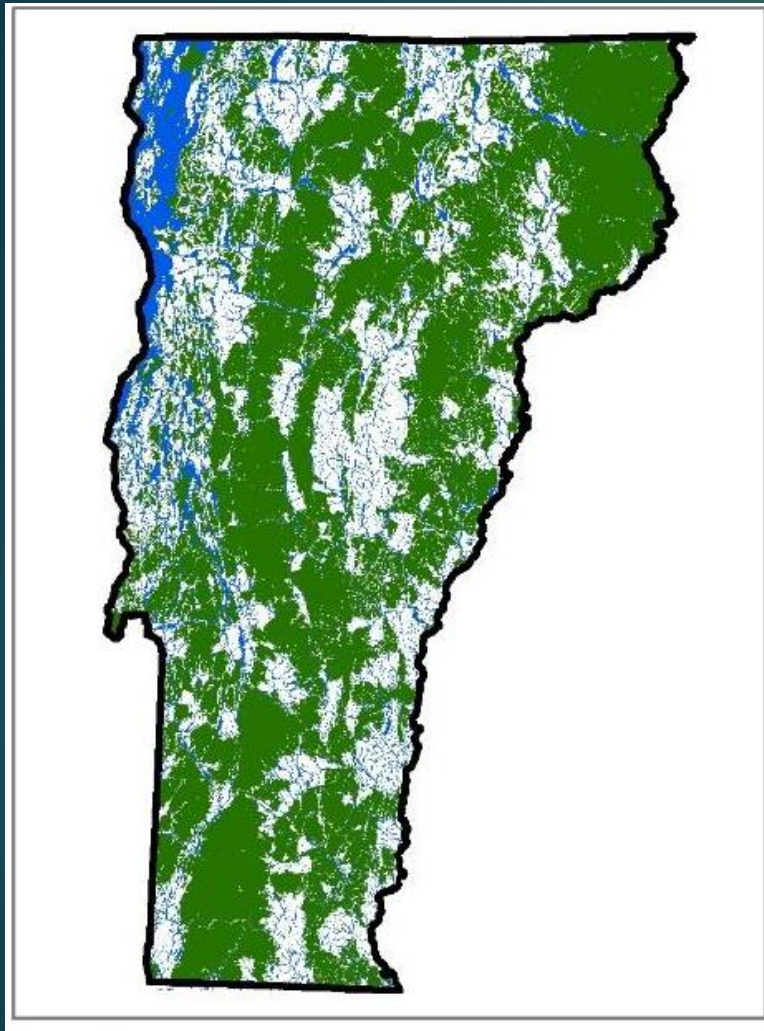


# VFWD Land Acquisition Efforts



John Austin, Lands and Habitat Program Manager  
Wildlife Division

# How can we ensure the conservation of all species?



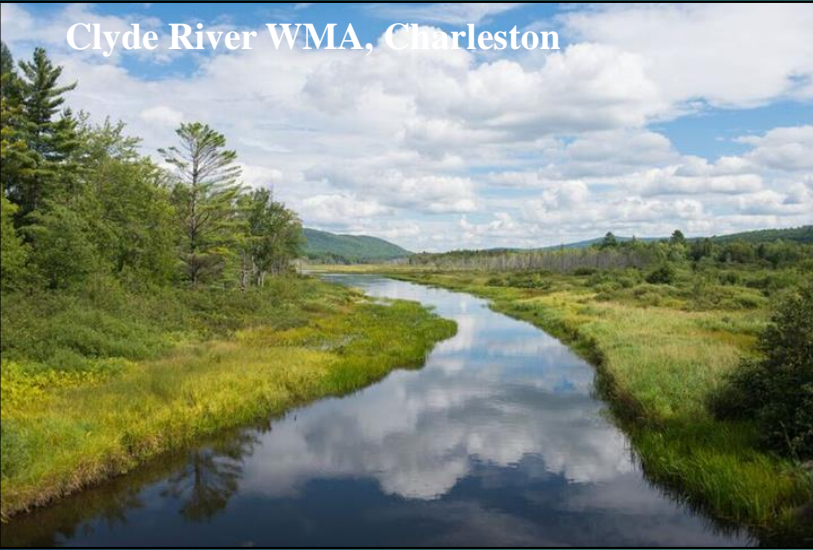




## Habitat Conservation is Fundamental to Wildlife Conservation

- Technical Support to Private Landowners
- **Habitat Protection through Act 250 & Sec 248**
- Conservation Planning Support to VT Communities
- **Public Land Management with ALL Partners**
  - Land Conservation

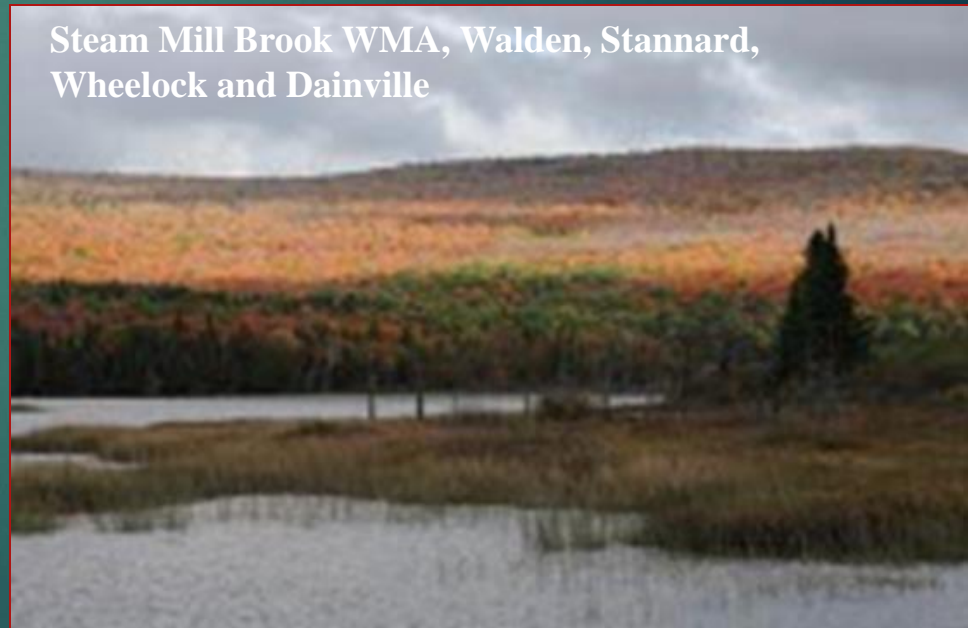
Clyde River WMA, Charleston



*The mission of the VFWD is the conservation of fish, wildlife, plants and their habitats for the people of Vermont.*

*Land conservation and management is an essential part of VFWD's ability to achieve its mission and fully represent the public's interests in fish and wildlife conservation.*

Steam Mill Brook WMA, Walden, Stannard, Wheelock and Dainville







Celebrating 100<sup>th</sup> Anniversary in the  
Summer of 2020 at Sandbar WMA

- In 1920, VFWD began what has become a rich history of land conservation with acquisition of Sandbar WMA.
- VFWD now owns 100 WMAs comprised of more than 130,000 acres.
- Also own and manage 5 fish culture facilities, 2 flag-ship conservation camps, 120 access areas, and hundreds of riparian properties.
- VFWD holds interest in several thousand acres of other important wildlife habitat and natural communities through more than sixty conservation easements.

# Unique Funding Sources

- ▶ **Pittman-Robertson**
- ▶ **Competitive USFWS funding**
  - Recovery Land Acquisition Grants, NAWCA
- ▶ **VFWD Funds**
  - Habitat Stamp and Duck Stamp Funds
- ▶ **Vermont Housing and Conservation Board**
- ▶ **Environmental Protection Agency**
- ▶ **Also influence other funding source outcomes**
  - Forest Legacy, LWCF, VHCB Farm Projects, NRCS





# VFWD Strategic Land Conservation Plan - 2017

The goals included the development of:

- WMA's as Focus Areas
- WMA's with specific acquisition needs
- New areas to focus conservation



# Criteria for Evaluating Land Acquisition Projects

- ▶ Ecological values
- ▶ Public use and access values
- ▶ Management value
- ▶ Funding
- ▶ Partners





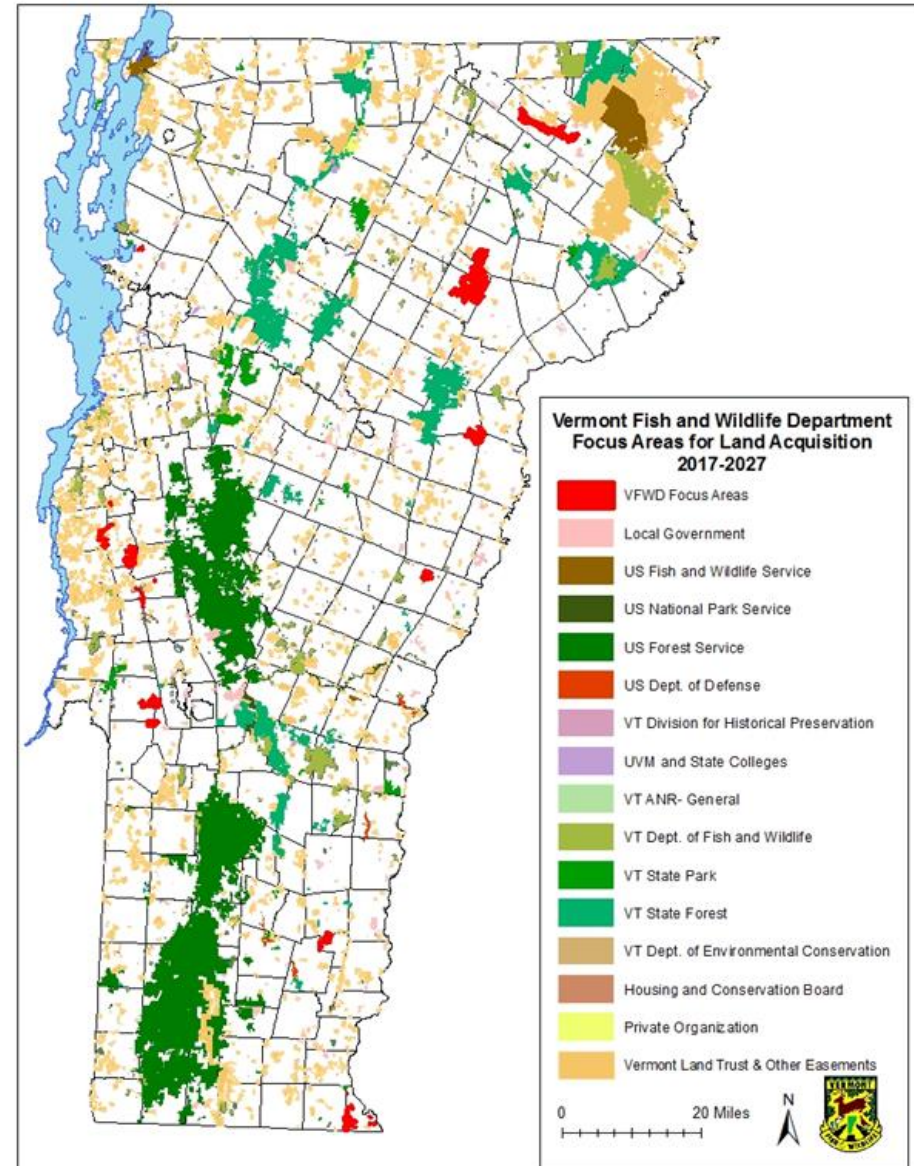
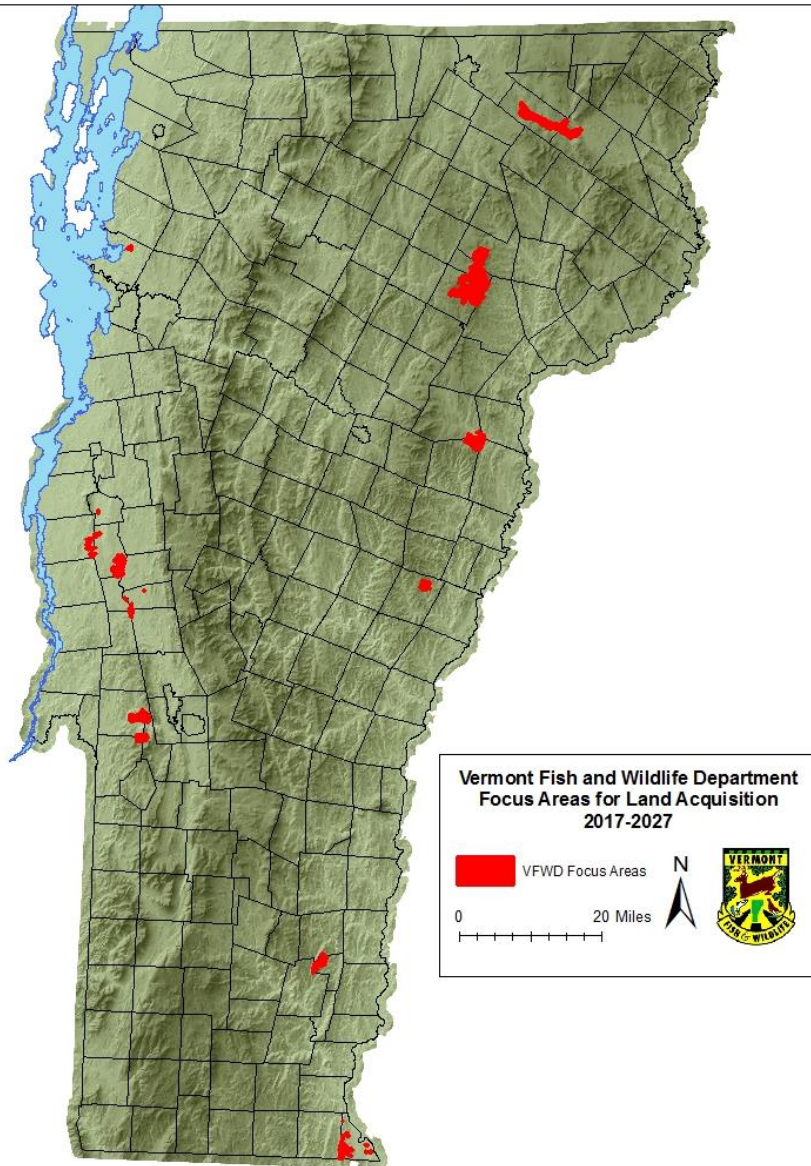
## Criteria for Establishment of VFWD Focus Areas

- 1) Existing partner conservation efforts;
- 2) Significant ecological areas unique within the broader context of Vermont biophysical regions;
- 3) Significant social benefits;
- 4) Building upon existing significant public investments of conserved land;
- 5) Acquisition of important inholdings within existing WMAs;
- 6) Available funding may provide conservation opportunities in certain regions of Vermont that fit the Department's interests.





# Statewide Focus Areas





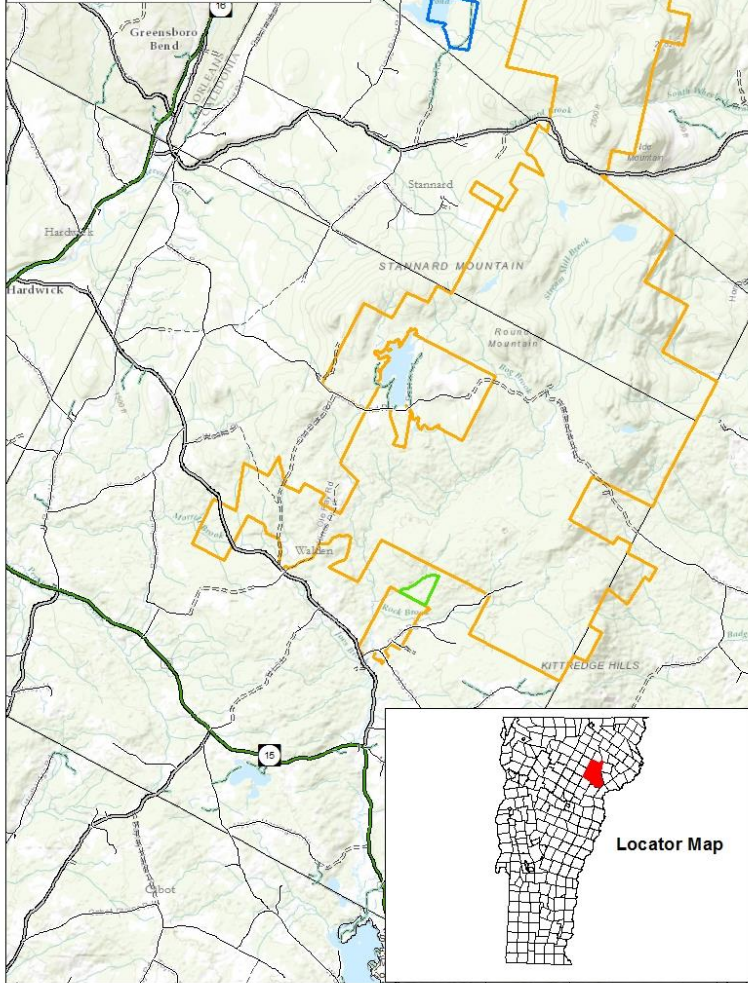
# Steam Mill Brook Focus Area

## Steam Mill Brook WMA Callan and Johnson Company Projects Walden and Wheelock

- Callan Property
- Johnson Property
- TNC-Owned Land and VLT Conserved
- Wildlife Management Area



0 1.3 Miles



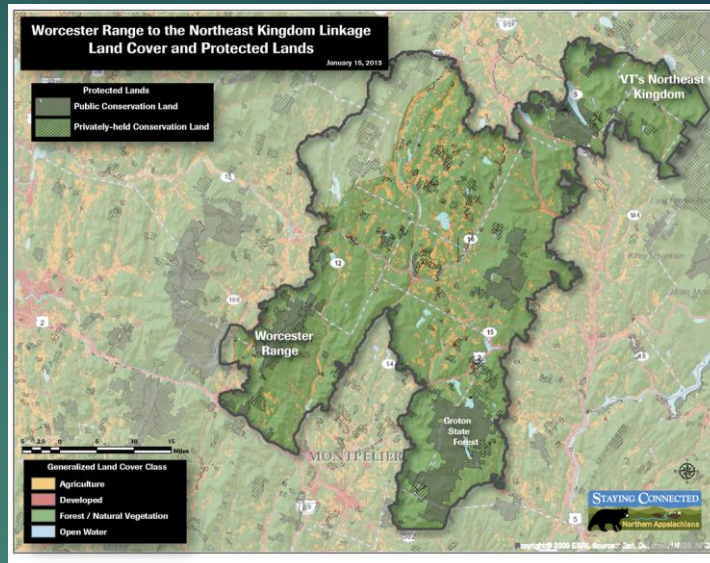
## Worcester Range to the Northeast Kingdom Linkage Land Cover and Protected Lands

January 15, 2013

- Protected Lands
- Public Conservation Land
- Privately-held Conservation Land

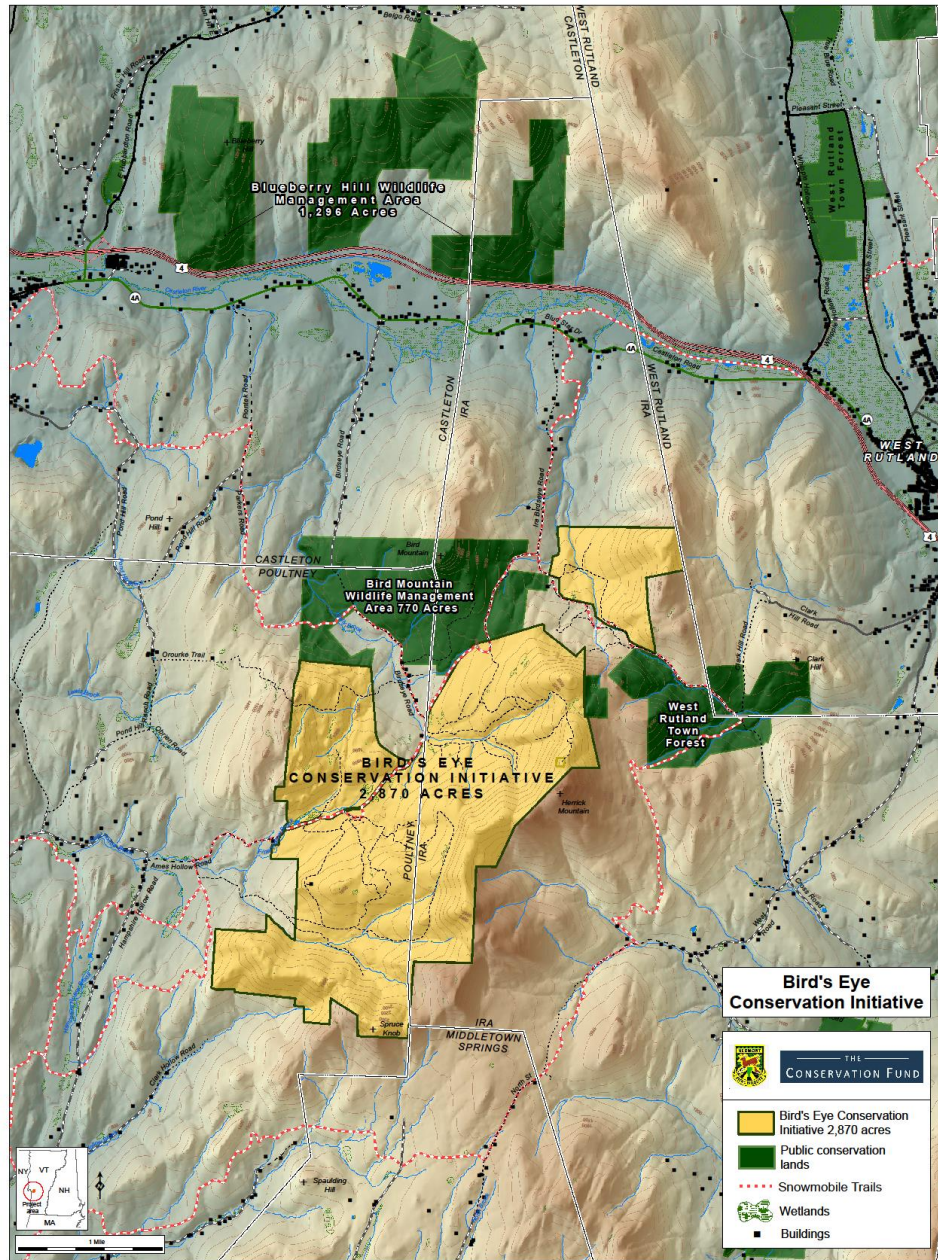
### Generalized Land Cover Class

- Agriculture
- Developed
- Forest / Natural Vegetation
- Open Water



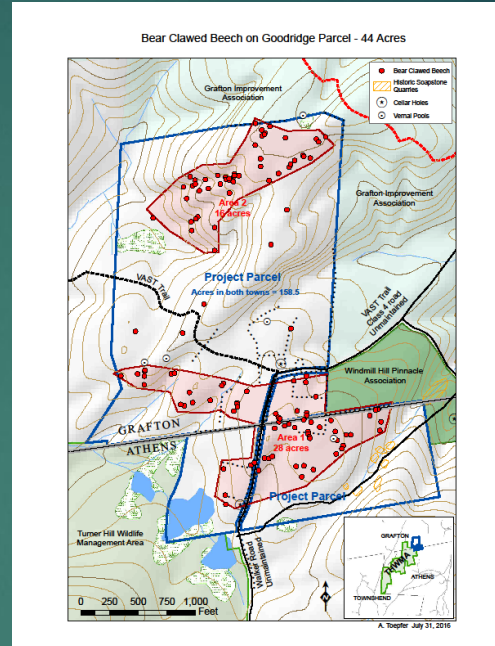
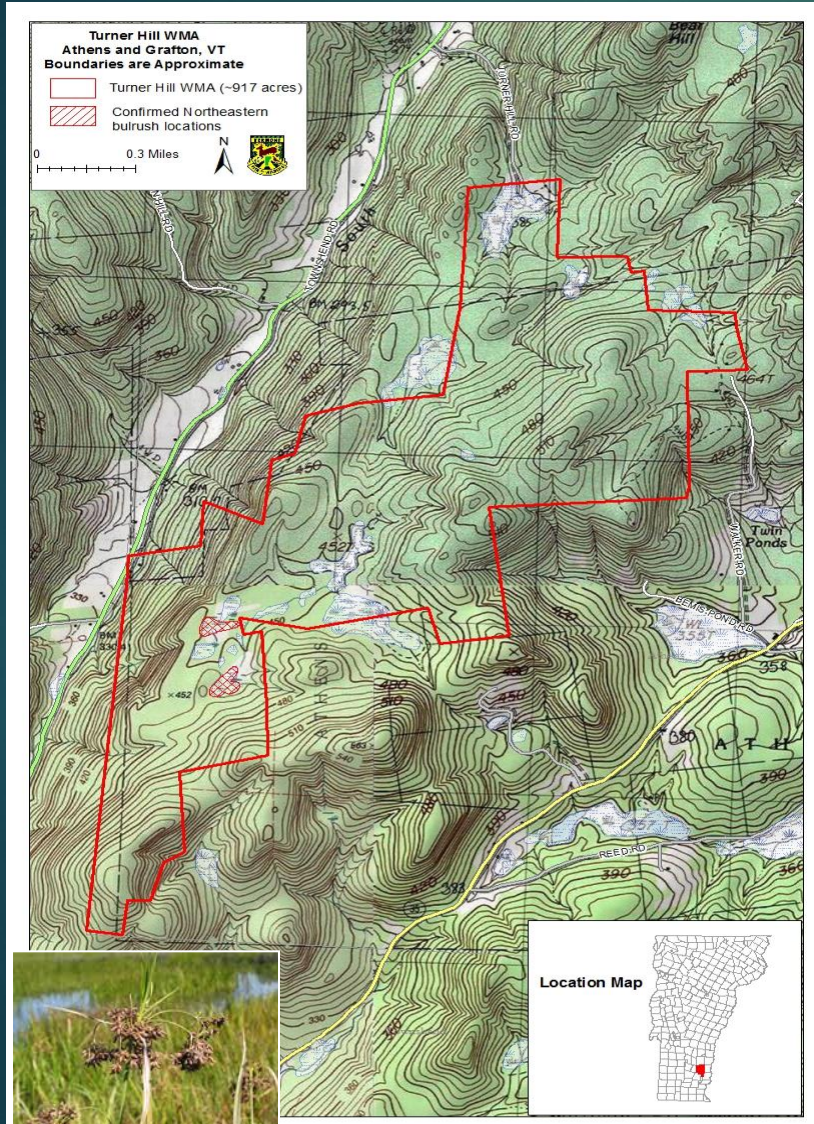


# Birdseye to Blueberry Hill Focus Area





# Turner Hill WMA In Grafton and Athens, VT





# Acquisition Highlights - 2020

- ▶ The VFWD closed 9 projects in 2020 including the 527-acre acquisition in Shrewsbury to develop our 100<sup>th</sup> WMA officially named Town Farm WMA.
- ▶ A total of 1,642.6 acres
- ▶ Many of the acquisitions were funded through the VFWD's new program focused on wetland acquisition and restoration in the Champlain Basin to enhance water quality in Lake Champlain, funded by the EPA.





# VFWD EPA-Funded Wetland Acquisition and Restoration

- Overview – How did this come to be?
- FY18, FY19 and FY20 total \$4.35 million
- Anticipate \$2 million for FY21
- Future Opportunities
- Minimum Requirements
- Steering Committee:  
Representation from DEC,  
Fisheries and Wildlife.



# Current Project Analysis

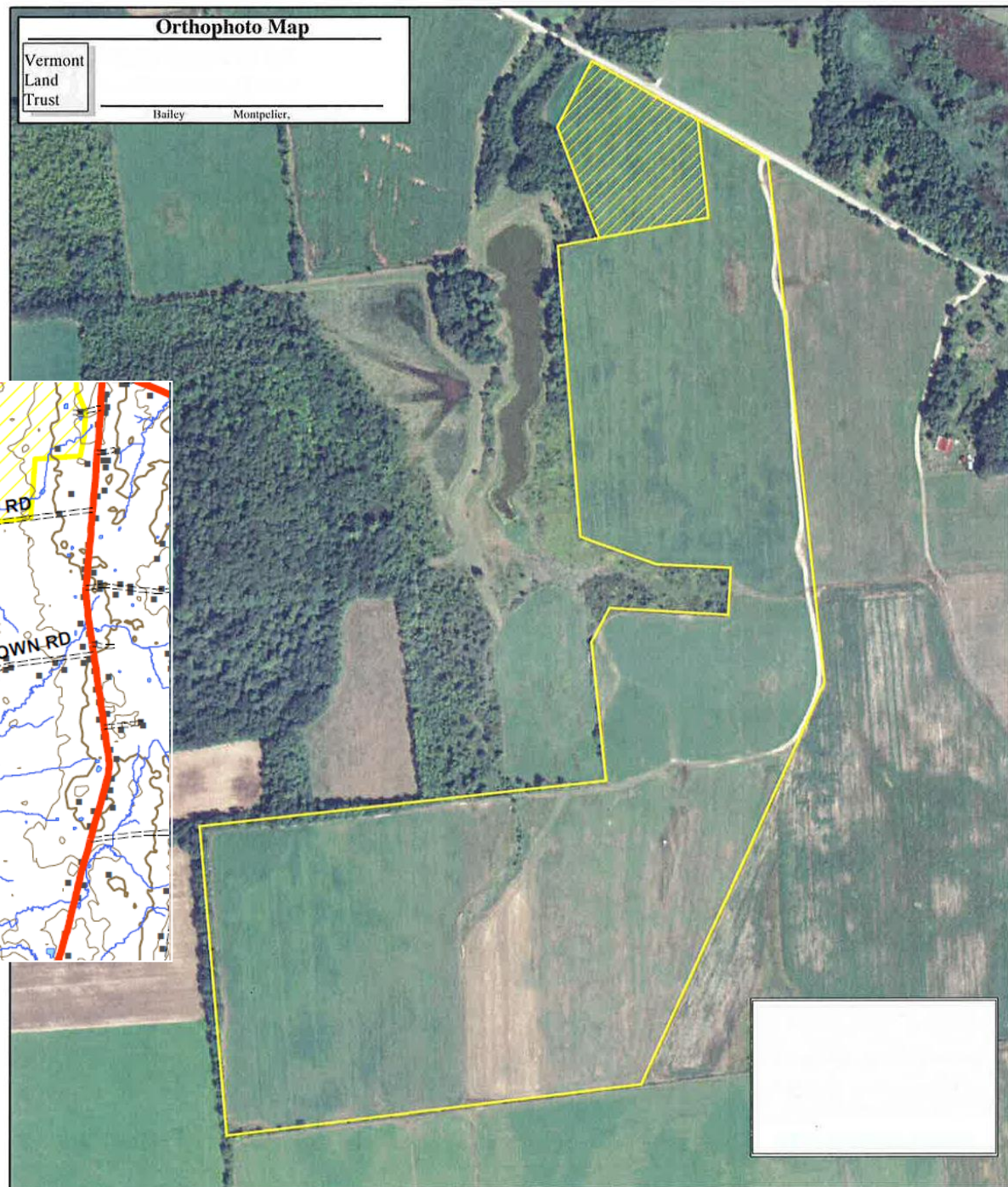
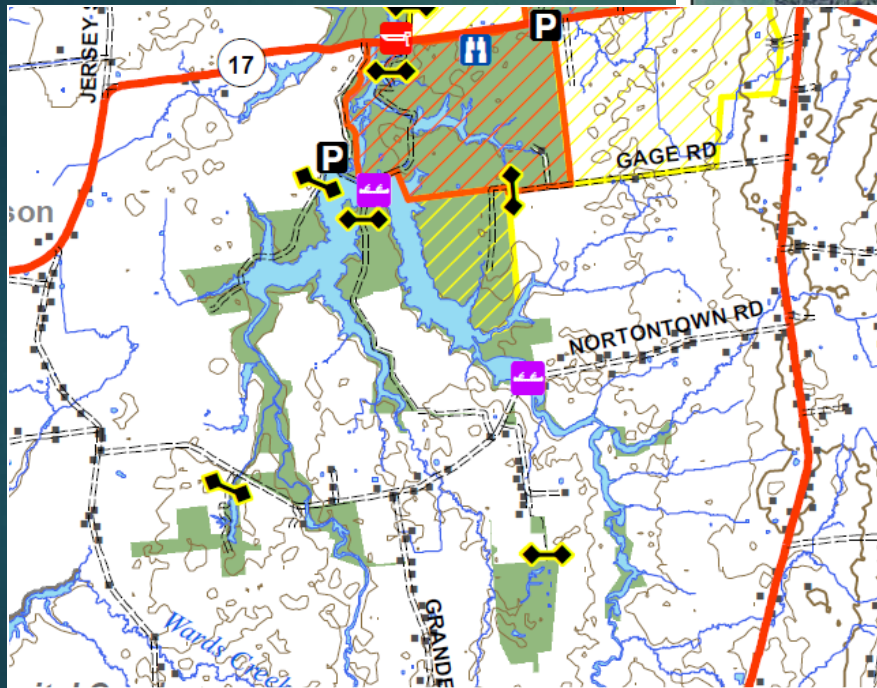
Project	Town	Restorable acres	Total acres	% restored	Status	Total Acquisition Cost	Cost to EPA Grant
Derosia-Rock River	Highgate	21	124	17%	Closed	\$ 289,000.00	\$ 289,000.00
Connor-Dead Creek	Addison	88	93	95%	Closed	\$ 215,000.00	\$ 215,000.00
Fitzgerald - Intervale	Colchester	100	124	81%	Closed	\$450,000-	\$-
Plouffe-Malletts Creek	Colchester	20	80	25%	Stalled	\$280,000-	\$-
Padvaiskas-East Creek	Orwell	10	38	26%	Closed	\$ 80,000.00	\$ 80,000.00
Senesac-Intervale	Colchester	104	142	73%	P&S	\$ 425,000.00	\$ 425,000.00
Jackson-Dead Creek	Panton	119	124	96%	Closed	\$ 346,000.00	\$ 346,000.00
Roorda-Dead Creek	Addison	194	214	91%	Appraisal	\$ 505,000.00	\$ 505,000.00
DeVos-Little Otter	Ferrisburg	97.81	330.8	30%	Appraisal	\$ 245,000.00	\$ 245,000.00
Deering-Lemon Fair	Bridport	267	427	63%	Closed	\$1,325,000	\$662,500
Hunt-Dead Creek	Addison		TBD				
Quesnel WRE-Lemon Fair	Cornwall	322	322	100%	P&S	\$104,000	\$ 104,000.00
Reynolds-Black Creek	St. Albans	0	76	0%	Under contract	\$10,000	\$10,000
Grand Total		1342.81	2094.8	64%			\$ 2,881,500.00



# Dead Creek WMA

## Connor Farm

98 acres





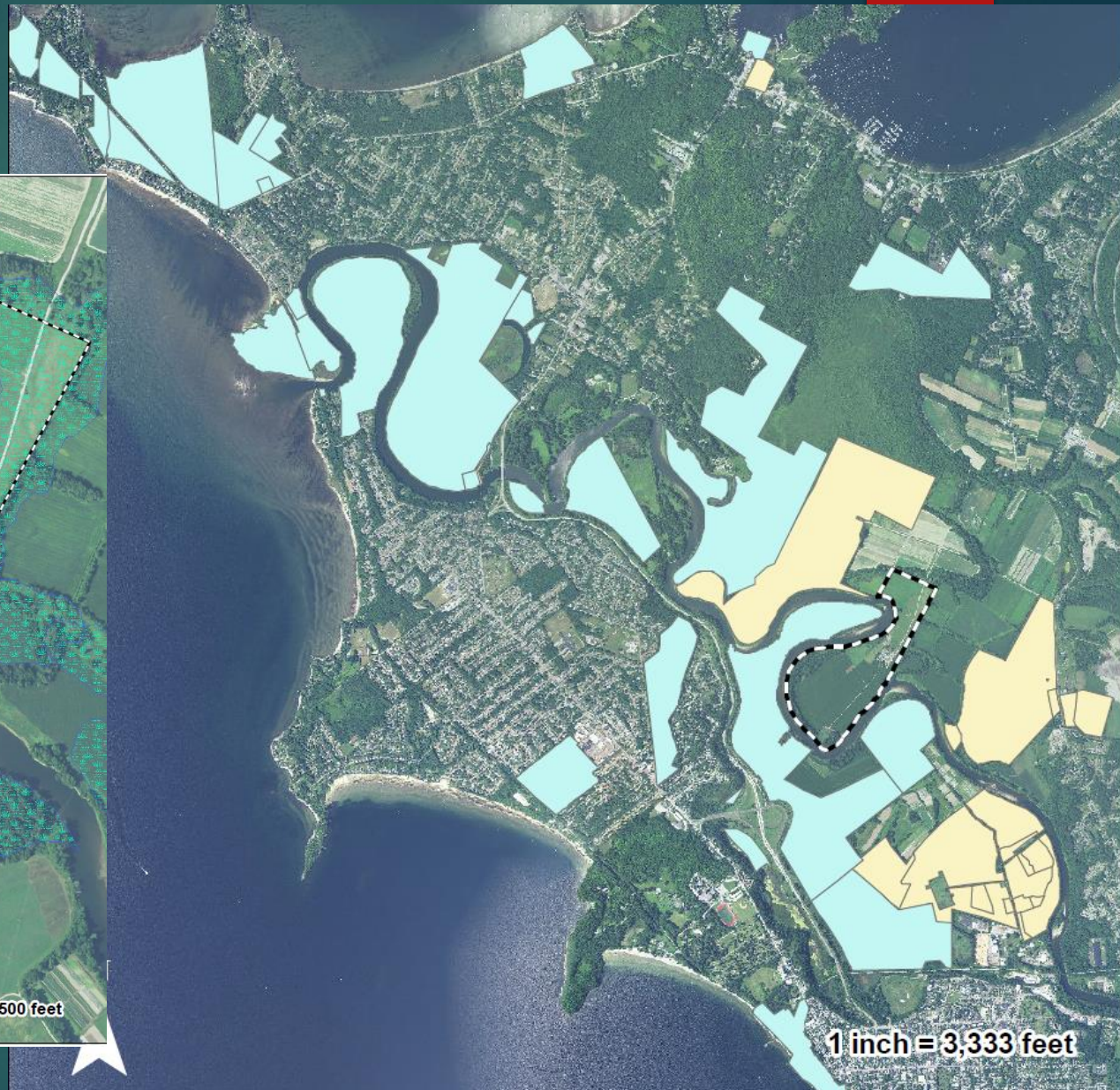
# Rock River WMA – Derosia, 124 acres





# Intervale WMA

## Fitzgerald, 124 acres









# Intervale WMA – Senesac, 142 acres





# Summary

- 10-year avg is to 7 prjts/yr
- Currently have more than 25 active projects in various stages
- Continue to revisit the strategic plan to consider new issues and opportunities such as endangered species, unique funds (EPA)
- Working on new Agency Land Conservation Plan

