

The Town of KILLINGTON, VERMONT 2003 Annual Report

Fiscal Year Ended December 31, 2003

TOWN OF KILLINGTON
 VERMONT
 2003 ANNUAL REPORT
 J. H. H. 1890

The Cover

Free Dump Day, Killington

The art was created by Alice Sciore for a juried show at the Chaffee Center for the Arts. The show was devoted to drawing, depicting Vermonters at Work off the Beaten Path. The accepted pieces were reproduced in a catalog then toured Vermont and other states as did the cover art. A legitimate opportunity to 'capture' the Dump.

Sciore as well as many other residents saw the Dump of those days as a richly colorful, Killington 'destination', at times its keepers shared this aura. One could discuss national or local politics, criticize fashion and dining trends, current events, theoretically and in fact pick-up more than we dumped off.

The Artist

A Graphics Designer/Illustrator, Sciore came to Killington, continued her work as Star Route Design and followed through with fine arts. Her paintings and sculpture have taken awards.

Sciore is a board member of the Chaffee Center for the Arts and the Killington Arts Guild, member of the Chaffee, Moonbrook and Vermont Watercolor Society. She is the Art Show/Gallery Co-ordinator for the Guild and maintains a small gallery at her residence.

TABLE OF CONTENTS

Auditors' Opinion	2
Dedication	3
TOWN REPORTS	
Town Manager's Report	4
Town Bonded Debt	7
Treasurer's Reports	8
Explanation of 2003 Grand List & Statement of Current Taxes	11
Statement of Delinquent Taxes & Delinquent Property Taxes	12
Gross Wages	15
General Fund Statement of Revenue & Receipts	17
General Fund 2004 Budget	18
General Fund Budget Summary & Anticipated 2004 Tax Rate	25
SCHOOL REPORTS	
Elementary School Principal's Report	27
School Director's Report	29
School Treasurer's Reports	30
Sherburne School District Receipts	31
Sherburne School District 2003-2004 Budget	32
Sherburne School District Balance Sheet	36
Sherburne Elementary School Salaries; School Bonded Debt	37
Three Prior Years Comparisons	38
OTHER GOVERNMENTAL REPORTS	
Sherburne Volunteer Fire Department	39
Sherburne Memorial Library	41
Recreation Commission	43
Sherburne Village Cemetery	44
Planning Commission	45
Zoning Activity	46
Trustees of Public Funds	46
Town Clerk Reports: Licenses and Vital Statistics	47
Green Mountain National Golf Course & O&M Budget Breakdown	52
New Garage Budget Breakdown	55
Inventory of Town Equipment and Fixed Assets	56
Five Year Comparisons	58
COMMUNITY AND COUNTY REPORTS	
Fire Warden	59
Friends of the Sherburne Memorial Library	60
Killington Arts Guild	61
Sherburne Historians	62
Rutland Mental Health Services	63
Rutland County Women's Network & Shelter	63
Visiting Nurse Alliance and Rutland Area VNA & Hospice	64
Rutland Regional Planning Commission	65
Regional Ambulance Service, Inc.	66
Southwestern Vermont Council on Aging	67
ARC - Rutland Area	68
Retired and Senior Volunteer Program	69
Rutland County Solid Waste District	70
Rutland Region Transportation Council	71
Vermont Coalition of Municipalities	72
Vermont League of Cities & Towns	73
Vermont Department of Health	74
Chateaugay No Town Conservation Project	75
Green-Up Vermont	76
Results of 2003 Town and School and Special Meetings	77
Warnings for 2004 Town and School Meetings	82-85
Appointed and Elected 2003 Town Officers	86, 87
Index	88
Miscellaneous Town Information	
	Inside Back Cover

AUDITORS' OPINION

In accordance with Vermont Statutes Title 24, Chapter 51, we have examined the financial statements and reports of the Town of Killington for the year 2003, and to the best of our knowledge they are accurate.

Respectfully submitted,


Gregory H. Becker


Bernard Riquier

Ron Riquier


William Ehmann
BOARD OF AUDITORS

DEDICATION

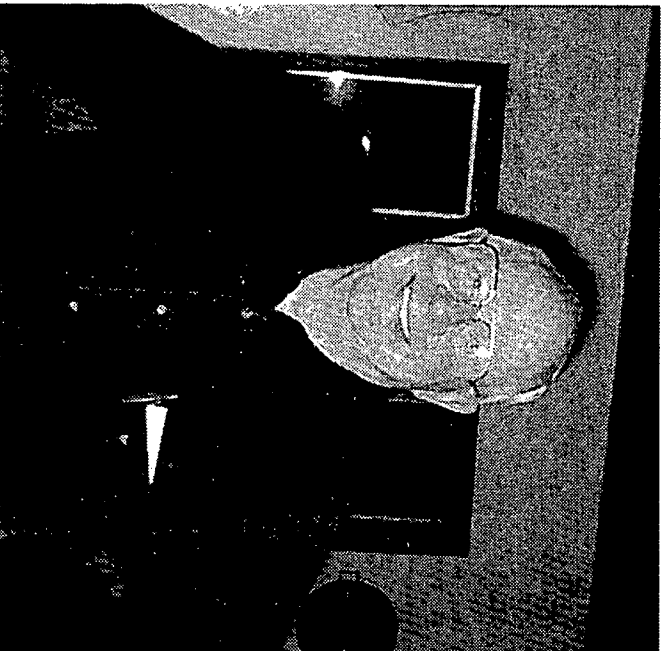
CHARLES A. WISE

We would like to dedicate this year's Annual Report to Charles Wise. With this limited space it is difficult to convey our appreciation to our neighbor, friend, local businessman, mentor and Town Father. We have seen, listened, learned from and admired Charles's dedication, thoughtful and forward looking perspective and concern for our town, and are changed forever because of it.

An unprecedentedly active resident of Killington since he first took up residency in the town in 1962, Charles began as a ski instructor, became a teacher in West Rutland and the owner of the Little Buckhorn Lodge, worked at Martin Associates Real Estate and finally began his own real estate company, Wise Associates.

Charles's numerous civic involvements concretely forged the shape of the Town of Killington and include Selectman (1963-1967); President, Sherburne Volunteer Fire Department (1966-1974); Woodstock Union High School Board (1968-1973); Zoning Board of Adjustment (1976-1979); Planning Commission (1977-1979, 1984-1985); Town Moderator (1977-1989); Grand Juror (1984-present); Rutland Regional Planning Commission (1984-1990); Rutland Regional Transportation Council (1995-1999); and Sherburne Elementary School Board (2003-present).

We are very fortunate to have had Charlie's involvement, dedication and concern working for our benefit. His clear thinking has enabled him to articulate the finest details clearly for us all and exponentially enrich our lives because of it, and we are deeply grateful.



TOWN MANAGER'S REPORT

INTRODUCTION

The myth of "local control," "grass-roots democracy" and "the best government is that closest to the people" has never been more shattered than with the ever broadening role of State and Federal government in the doings of your town and school activities, whether it involves mandates on educational operations, statewide property taxes or covering sand piles. State and Federal regulations and laws are usurping local authority to the brink of irrelevancy. Ironically, the State of Vermont, which historically has been depicted as the quintessential bastion of individualism and Town meeting democracy, provides far less independence and decision-making ability at the local level than most other states in the union.

It is hoped this erosion of democracy from the bottom up is only cyclical and will ultimately turn around if enough people express their unhappiness and dissatisfaction with the present situation.

ACT 60 / NEW HAMPSHIRE-BOUND?

Last fall the Vermont Supreme Court, with utter disregard to established legal precedent and judicial equity, callously overturned a thoughtful, well-reasoned Rutland Superior Court decision on the Act 60 Equalized Grand List methodology. By completely ignoring the lower court's 53 pages of detailed findings based on days of trial testimony and reams of evidence, the Supreme Court once again chose political philosophy as their guiding principle in finding that the State of Vermont has the right to do whatever it desires without any worry of successful legal challenge.

This Supreme Court abomination, coupled with the political reality of unsympathetic Executive and Legislative branches of Vermont State government, has led the Board of Selectmen to seriously consider the only option left for the Town of Killington to receive political, economic and judicial fairness; that being to seek admission in New Hampshire as a municipality of that state. Article 3 on this year's Town Meeting Warning requests permission to petition the State of New Hampshire.

ACT 68 & FINANCIAL

Last year the Vermont Legislature responded to the constant increase in school property taxes to municipalities as a result of Act 60 by passing a new law, so-called Act 68. This new law will take effect this year by lowering school property taxes in many communities, but in Killington it will dramatically raise State school property taxes, primarily due to rendering the Sherburne Education Foundation (SEF) ineffectual. Killington property taxpayers have, since Act 60 was adopted, avoided the annual "shark pool" assessments that would have amounted to \$3-5 million per year, adding about \$.90 to the tax rate. Over the past five years almost \$20 million in property taxes were saved due to the SEF fund raising, but Act 68 eliminated this ability. This year's State school property taxes will increase from \$6 million to \$10 million, necessitating a huge increase in the tax rate regardless of the outcome of the Sherburne School budget.

While Act 68 will cause State-wide school property taxes to skyrocket, municipal taxes will stay about the same as last year. An increase in Town taxes of only \$20,000 will actually cause the estimated municipal tax rate to decrease. Insurance premiums across the board, as well as a few departmental increases, were mostly offset by reductions in legal and school rental charges (no longer beneficial under Act 68), among others.

Another casualty of Act 68 appears to be our July 1 first installment due date for Town and School taxes. Since the State of Vermont will be calculating the Statewide school property tax rates and developing an insert that must be included with the tax bills, our ability to send out bills in early June will be impossible. Article 6 on the Town Meeting Warning changes the first installment due date to August 1st.

The final substantive change to be discussed at Town Meeting is Article 4, which proposes to change the date of future Town Meetings from its traditional Tuesday daytime meeting to Monday evenings prior to the first Tuesday in March. This article is presented to give voters an opportunity to decide whether a change from the Tuesday daytime meeting will encourage higher attendance.

CAPITAL

The new six/eight bay Town Garage was completed last December, allowing the Highway Department to move in before the onset of the worst of winter. Belden Company did a fantastic job on the project with regard to timing, quality and communications, along with keeping the cost to the original contract. Along with this work, the Highway Department completely rebuilt the Transfer Station area and access driveway, both of which were also paved.

Recreation Director Mike Coppinger's ability to secure substantial Vermont Housing and Conservation Grant funds helped purchase 4.8 acres from Ada Hall behind the Sherburne Memorial Library that will provide perpetual protection from development for the Library and eventually add athletic fields to the overburdened multi-use field by the pool.

This summer the Rabeck Road culvert will be replaced with a new bridge, using a \$108,000 State grant. Paving will be done on upper Roaring Brook Road, East Mountain Road and West Hill Road, while gravel resurfacing on Dean Hill, Cubs Concourse, Terrace Drive and Roundabout Road is planned.

The oldest dump truck and the 1996 backhoe were replaced in 2003 under the Equipment Replacement Program; this year only the replacement of a one-ton truck is planned.

GENERAL

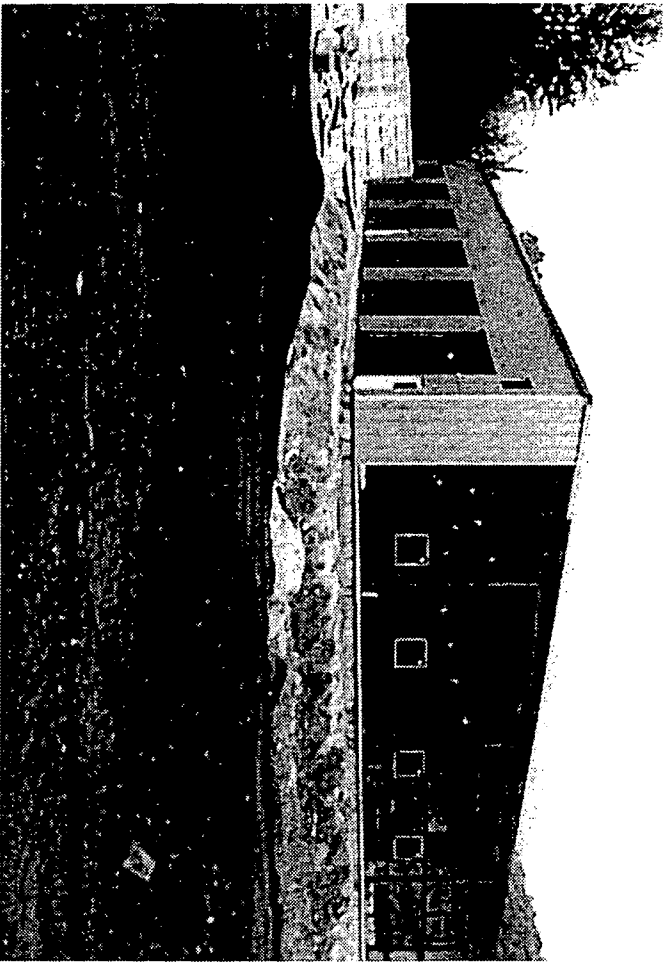
The P.E.G. (Public, Educational and Governmental) provider determination is still in limbo as SKATV has appealed to the Vermont Supreme Court the Public Service Board choice of RRCTV as the best provider for Killington.

Tim Gibbard became a Special Police Officer for the Town last year, which should help expand law enforcement activities and visibility throughout the community.

Whether it be the volunteers of the fire department, the Constables and Special Police Officers, the Listers, Planning and Recreation Commission members and all the other part-time employees and volunteers or the full-time Town Office staff, Librarians, Highway, Golf and Recreation Department employees, the Town of Killington taxpayers are extremely fortunate to have these dedicated public servants working on their behalf. In thirty years of local government service, I've seen numerous examples elsewhere of what is wrong with government at all levels, but I am proud to be associated with so many sincere, selfless individuals in this community who set such a high standard of competence and dedication.

Respectfully submitted,

David W. Lewis
Town Manager



NEW TOWN GARAGE LOOKING FROM TRANSFER STATION

TOWN BONDED DEBT

On December 14, 1993, \$5,500,000 of General Obligation Bonds was authorized by voters for purchase of land and construction of a municipal golf course. \$5,000,000 of long term debt was sold through the Vermont Bond Bank in August of 1995, which provides for a 30-year repayment schedule. The remaining \$500,000 was sold in July of 1998 through the Vermont Bond Bank, which provides for a 20-year repayment schedule. As of 12/31/03 a total of \$4,540,000 remains to be paid.

In July of 2003 \$545,000 of General Obligation Bonds for refunding a golf current expense note was sold through the Vermont Bond Bank, which provides for a 20-year repayment schedule. As of 12/31/03 a total of \$545,000 remains to be paid.

On December 9, 1997, \$950,000 of General Obligation Bonds was authorized by voters for purchase of land and construction of a new municipal library. This long term debt was sold in July of 1998 through the Vermont Bond Bank, which provides for a 20-year repayment schedule. As of 12/31/03 a total of \$700,000 remains to be paid.

On April 27, 1999, \$2,600,000 of General Obligation Bonds was authorized by voters for construction of sewer lines and pump stations along the Killington Road and U.S. Route 4 to connect to the Alpine Pipeline. This long term debt was sold in July of 1999 through the Vermont Bond Bank, which provides for a 20-year repayment schedule. As of 12/31/03 a total of \$2,240,000 remains to be paid.

On September 10, 2002, \$685,000 of General Obligation Bonds was authorized by voters for construction of a new Town Garage building. \$610,000 of this long term debt was sold in July of 2003 through the Vermont Bond Bank, which provides for a 20-year repayment schedule. As of 12/31/03 a total of \$610,000 remains to be paid.

TOWN LEASE AGREEMENTS

In December of 2001 the Town signed a five-year lease agreement with Caterpillar Financial Services Corporation for a Caterpillar Model 248 Skid Steer Loader at a total cost of \$43,082.47. The Town will own the Skid Steer at the end of the lease. As of 12/31/03 a total of \$17,207.56 remains to be paid.

In January of 2002 the Town signed a five-year lease agreement with Yamaha Motor Corporation for 68 Yamaha Golf Carts at a total cost of \$229,950.00. The Town will own the golf carts at the end of the lease. As of 12/31/03 a total of \$137,970.00 remains to be paid.

In July of 2003 the Town signed a five-year lease agreement with SymQuest Group, Inc., for three copier machines at a total cost of \$19,344.00. The Town will own the copiers at the end of the lease. As of 12/31/03 a total of \$17,732.00 remains to be paid.

TREASURER'S REPORTS

YEAR ENDED DECEMBER 31, 2003

GENERAL FUND ACCOUNTS

Beginning Balance January 1, 2003

Receipts

Disbursements

Balance December 31, 2003

Due from Golf Accounts (see pages 10 & 53)

Actual Balance December 31, 2003

	\$ 316,885.36
	<u>14,500,408.50</u>
	14,817,293.86
	<u>(14,578,375.73)</u>
	\$ 238,918.13
	<u>130,821.03</u>
	<u>\$ 369,739.16</u>

ALPINE DRIVE SEWER ACCOUNT

Beginning Balance January 1, 2003

Receipts

Interest Earned

Disbursements

Balance December 31, 2003

	\$7,415.12
	4,524.50
	<u>116.66</u>
	12,056.28
	<u>(4,278.14)</u>
	<u>\$ 7,778.14</u>

EQUIPMENT REPLACEMENT FUND

Beginning Balance January 1, 2003

Interest Earned

Disbursements

Balance December 31, 2003

	\$280,381.74
	<u>3,090.17</u>
	283,471.91
	<u>(57,692.18)</u>
	<u>\$225,779.73</u>

KILLINGTON ROAD/ROUTE 4 SEWER ACCOUNT

Beginning Balance January 1, 2003

User Assessments/Interest/Penalties

Loan Repayment

Interest Earned

Disbursements

Loan to General Fund

Balance December 31, 2003

	\$443,573.32
	166,536.25
	100,000.00
	<u>4,167.72</u>
	714,277.29
	<u>(229,851.66)</u>
	<u>(100,000.00)</u>
	<u>\$384,425.63</u>

S.V.F.D. CAPITAL FUND

Beginning Balance January 1, 2003

Transfer from General Fund

Interest Earned

Balance December 31, 2003

	\$268,535.78
	46,900.00
	<u>2,948.46</u>
	<u>\$318,384.24</u>

RESTRICTED FUNDS

Beginning Balance January 1, 2003

Killington Road Walkway	139,809.36	\$3,070,116.42
Bituminous Resurfacing	21,717.00	9,002.81
Planning Commission Technical Services	13,436.22	20,369.07
Zoning Deposits	4,047.06	
Land Records Restoration	19,221.75	1,840.00
Library Leggett Capital Fund	3,786.81	11,874.00
Library Freeman Grant	12,634.22	5,198.74
Bridge Repair	21,988.75	5,009.35
State Reappraisal Grants	81,622.93	10,652.71
Recreation Capital Improvements	38,796.43	18,519.93
Recreation Donations	2,865.59	
Garage Replacement Fund	147,343.43	
State-wide School Tax - 2003	2,562,846.87	
State-wide School Tax - 2004		
Town Office Capital Maintenance Fund	2,626,838.31	
Library Capital Maintenance Fund	2,000.00	
Topridge 2001 & 2002 Taxes, under appeal	1,000.00	
Harrick Tax Sale Extra	85,581.82	
Hansen 2004 Cobra	3,134.89	
Interest Earned - 2003	179.82	
	<u>25,037.08</u>	
	5,896,354.95	

Disbursements

Garage Replacement Fund	75,384.10
Refundable Zoning Deposits	1,714.26
Library - Leggett Capital Fund	2,834.10
Library Freeman Grant Expenses	11,781.50
Recreation Donation Expenses	1,976.35
Planning Commission Technical Services	388.59
State-wide School Tax - 2003 (FY02)	2,562,846.87
2003 Interest	<u>25,037.08</u>
	(2,681,962.85)
	<u>\$3,214,392.10</u>

Balance December 31, 2003

GOLF FUND ACCOUNTS are listed on page 53

FUND ACCOUNT SUMMARY DECEMBER 31, 2003

GENERAL FUND OPERATING ACCOUNT

\$ 238,918.13*

RESTRICTED FUNDS

Killington Road Walkway	\$148,812.17
Bituminous Resurfacing	42,086.07
Town Garage Replacement Fund	71,959.33
Zoning Deposits	4,172.80
Land Records Restoration	31,095.75
Library Leggett Donations	6,151.45
Library Freeman Grant	852.72
Bridge Repair	26,998.10
State Reappraisal Grants	92,275.64
Recreation Capital Improvements	57,316.36
Recreation Donations	889.24
Planning Commission Technical Services	13,047.63
Town Office Capital Fund	2,000.00
Library Capital Fund	1,000.00
Topridge 2001 & 2002 Taxes	85,581.82
Harrick Tax Sale Extra	3,134.89
Hansen Cobra for 2004	179.82
State-wide School Tax - 2004	<u>2,626,838.31</u>

3,214,392.10

OTHER DESIGNATED FUNDS

ALPINE DRIVE SEWER ACCOUNT	7,778.14
EQUIPMENT REPLACEMENT FUND	225,779.73
KILLINGTON RD/RT 4 SEWER ACCOUNT	384,425.63
S.V.F.D. CAPITAL FUND	318,384.24

GOLF ACCOUNTS *

GOLF PRO SHOP ACCOUNT	\$8,285.64
GOLF RESTAURANT ACCOUNT	<u>250.00</u>

GRAND TOTAL

8,535.64
\$4,398,213.61

* Note: Golf Accounts owe General Fund \$130,821.03 as of 12/31/03 (see pages 8 & 53)

Respectfully submitted,
Patricia A. Keim, Treasurer

EXPLANATION OF 2003 GRAND LIST

Fair Market and Listed Value of
Real Estate and Personal Property

\$603,527,293.00

Total 2003 Grand List (1% of above)

6,035,272.93

CATEGORY BREAKDOWN

REAL ESTATE:

Residential	726,038.05
Mobile Homes	3,160.00
Vacation Properties	3,756,102.15
Commercial	1,087,592.20
Utilities	54,839.46
Woodland	117,981.78
Government Land	2,507.50
Miscellaneous	<u>196,636.00</u>
TOTAL	5,944,857.14

PERSONAL PROPERTY: Cable Television

10,595.76

Subtotal - EDUCATION GRAND LIST

5,955,452.90

PERSONAL PROPERTY: Machinery & Equipment

79,820.03

TOTAL - MUNICIPAL GRAND LIST

6,035,272.93

STATEMENT OF CURRENT TAXES

FISCAL YEAR ENDED DECEMBER 31, 2003

TAXES BILLED:

R.E. & P. PROP.	TAX RATE	GRAND LIST	TAXES RAISED
School Fund	\$1.036	x 5,955,452.90	\$6,288,958.26
Town Fund	<u>0.306</u>	x 6,035,272.93	<u>1,846,793.52</u>
	\$1.362		\$8,135,751.78
		Taxes as Billed	<u>8,135,722.01</u>
		Difference	-29.77

TAXES ACCOUNTED FOR:

Real Estate & Personal Property
Current Tax Collections
Delinquents (as of delinquent date)

\$7,670,401.06
465,320.95

TOTAL 2003 TAXES ACCOUNTED FOR

\$8,135,722.01

STATEMENT OF DELINQUENT TAXES

YEAR ENDED DECEMBER 31, 2003

REAL ESTATE AND PERSONAL PROPERTY TAXES

	BALANCE JAN.1, 2003	DELINQUENT NOV.11, 2003	COLLECTIONS DEC.31, 2003	BALANCE DEC.31, 2003
2000	\$ 12,073.68		\$ 12,073.68	\$ 0.00
2001	8,552.91		8,552.91	0.00
2002	219,350.64		200,635.38	18,715.26
2003	0.00	\$465,320.95	244,778.86	220,542.09
TOTAL	\$239,977.23	\$465,320.95	\$466,040.83	\$239,257.35

DELINQUENT PROPERTY TAXES

**Tax Sale pending

* Denotes multiple delinquent properties.

+ Making partial payments.

①() amounts are result of State Appraiser decision, 1/2/02, which is still on appeal and are not part of totals.

Class A Members of Sunrise 2001 \$(2,452.56)①

	<u>2002</u>	
** Auty, David & Diane & Douglas	\$ 3,495.00	
** Bellerose, Lawrence J. & Arlene	2,255.60	
* Class A Members of Sunrise	(2,321.38)①	
** Eisler, Howard, Susan & Joseph & Mark Balizer	3,704.70	
** Godda, Roy E.	106.59	
** Holmberg, Jeffrey & Pati	2,306.70	
** Hummel, Gregory E.	1,034.52	
** Minard, David F. & Linnea R.	349.50	
** Minard, Linnea	1,048.50	
** Morey, W. Dunham & Martha	118.83	
** Moyrihan, T. Steven	978.60	
+ Neil, Roger I., Jr.	310.62	
** Rossi, Richard E.	2,376.60	
Paid through January 30, 2004	629.50	
Total	\$18,715.26	

<u>2003</u>	
Alpine Trails Lodge	\$ 7,014.30
Alvarado, William & Aida	4,154.10
Auty, David & Diane & Douglas	3,405.00

*	Bellerose, Lawrence J. & Arlene Cathoun, Rosaline	3,745.50
	+ Chandler, Foster T. & Erin D. Chang, Mun	1,157.70
*	Class A Members of Sunrise Coogan, Mark	3,750.18
	Cote, Lyman & Sheila	1,089.60
	Croker, Albert and Ahobala Rao	6,566.20
*	Desforges, Leonard	242.71
	DiMartino, Paul	1,123.65
	Distefano, Michael & Cheryl	136.20
	Donnelly, Michael	640.14
	Draghlin, Fred	408.60
	Engle, Susan J.	885.30
	Funia, Kenneth & Diane M. Mallett	681.00
*	Ginsberg, Morris I.	7.65
	Godda, Roy E. and others	784.40
	Hannah, Michael & Gwendolyn Helio Systems, Inc.	2,124.72
	Holland, Mary T.	735.48
	+ Holmberg, Jeffrey & Parti	340.50
	Howald, Gertrude Olga	1,143.00
	Howald, Arno R.	1,225.80
	Hummel, Gregory E.	2,681.97
	Kearns, John M. & Janet T. Kelly, William B.	2,996.40
	Keough, Raymond & Kathleen & Robert Keough	749.10
	Kosinski, John & Marie	749.10
	Latta, Robert D. & Kathleen	1,089.60
	Leggett, Robin M.	1,362.00
	Liddell, Garrett & Jan	340.50
	Maloney, Linda	2,587.80
	McCoy, James F., Jr.	4,086.00
	MGB, LLC	1,021.50
	Minard, Linnea	30.64
	Minard, David F. & Linnea R.	1,157.70
	Morey, W. Dunham & Martha Moynihan, T. Steven	1,021.50
	Murphy, Patrick J.	1,430.10
	Neil, Roger I., Jr.	2,383.50
	No. Internetworking	1,702.50
	Oney, Adam & Julie Wilcox	681.00
	+ Pollock, Bernard R. Trust	91.25
	Pruskowski, Jacqueline E. & Robert Hauck	61.29
	Quantum North, Inc.	738.64
	Rabeck, Thomas G. & Lauren	2.55
	Rail Fence Inn, Inc.	5,788.50
	Raimondo, Charles & Janice	5,107.50
	Redkey, H. Christopher	1,838.70
	+ Rippon, Dean	1,021.50
	Rome Family Corporation	709.54
*		86,079.16

Rossi, Richard E.	2,315.40
Saari, Randy L.	885.30
St. Peter, David R.	885.30
Sweeney, Helen	4,562.70
Taboada, Paul E.	2,247.30
Textron Financial Corp.	10.03
Thomas, Raymond	340.50
Wilson, Brian & Anna	681.00

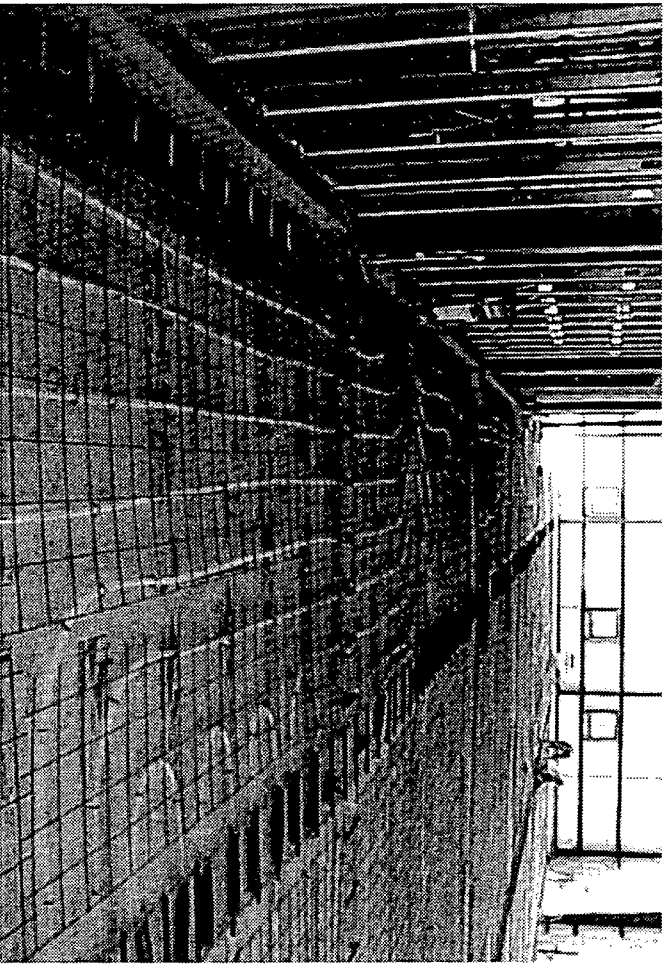
Paid through January 30, 2004

Total	<u>35,609.62</u>
	\$220,542.09

GRAND TOTAL AS OF DECEMBER 31, 2003 \$239,257.35

DELINQUENT KILLINGTON ROAD/ROUTE 4 SEWER ASSESSMENTS

Broder Development, Inc.	\$ 3,000.00
Harrick, Ltd.	1,200.00
Rome Family Corporation	49,200.00
Paid through January 30, 2004	7,800.00
Total	<u>\$61,200.00</u>



NEW TOWN GARAGE FRAME

GROSS WAGES GREEN MOUNTAIN NATIONAL GOLF COURSE

YEAR ENDED DECEMBER 31, 2003

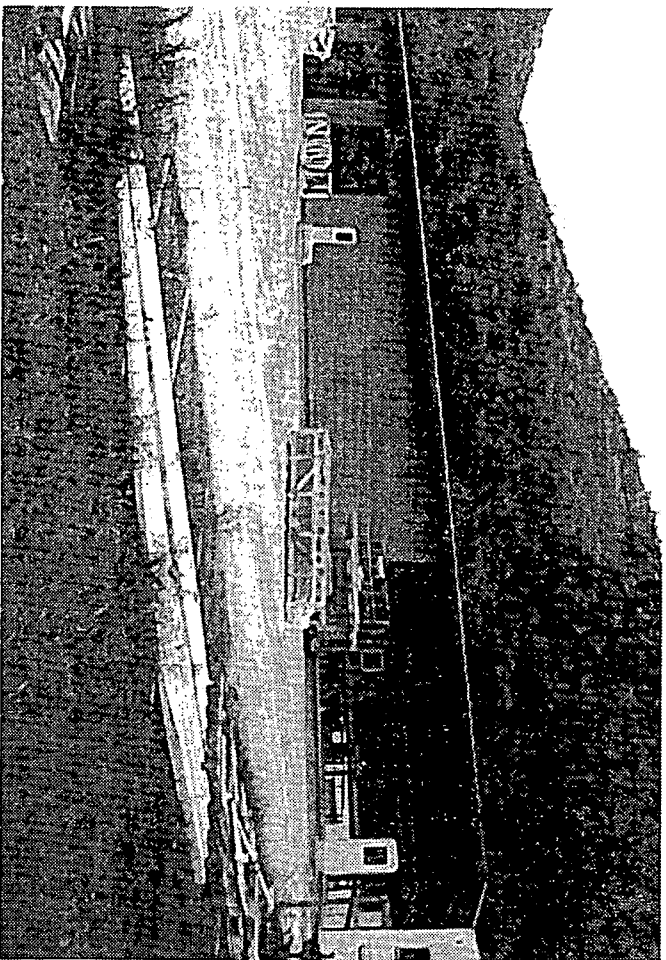
MAINTENANCE DEPARTMENT

Peter J. Bissell	\$ 64,000.00
W. John MacAulay	31,000.00
Seasonal staff	118,034.50

PRO SHOP

Jeffrey H. Hadley	58,562.12
Seasonal staff	56,386.78

RESTAURANT STAFF	37,464.25
------------------	-----------



NEW TOWN GARAGE LOOKING FROM RIVER ROAD

GROSS WAGES GENERAL FUND YEAR ENDED DECEMBER 31, 2003

David W. Lewis	\$67,600.00
Richard L. Horner	47,500.00
Kenneth L. Merrill	46,577.02
Patricia A. Keim	42,240.45
David R. Lenart	37,898.35
Gabrielle A. Weymouth	37,500.00
Ricky E. Bowen	37,406.25
Wayne H. Gifford	35,814.46
Robert E. Bowen	32,845.70
Michael J. Coppinger	32,500.00
Theresa Austin	28,076.40
Rodney L. Parker	25,737.30
Lucrecia N. Wonsor	25,219.91
Patrick B. McDonnell	24,716.25
Scott E. Bigelow	12,656.25
Constance Barbash	11,268.72
Robert W. Montgomery	9,109.80
Stephen W. Larson	6,442.50
Howard S. Zack	6,152.25
Sarah A. Bridges	3,192.10
Joseph P. Whelan	2,986.60

Timothy A. Gibbard	2,795.38
Helga T. Cognato	2,603.80
Jeff H. Hegewald	2,345.00
Linda D. Dentz	1,746.75
Walter J. Findeisen	1,500.00
Norman C. Holcomb	1,500.00
Michael E. Miller	1,500.00
David M. Proc	1,352.50
David Gouchberg	1,000.00
Jennifer M. Schomp	925.50
Patricia A. Linnemayr	904.20
Angela Noble	750.00
Scott Noble	750.00
Ronald Ottino	750.00
Mona B. Hickory	733.50
Kenneth L. Loeliger-Myers	570.50
Steven P. Finer	500.00
Scott V. Barkey	365.00
Ronald P. Riquier	82.50

RECREATION DEPARTMENT

Seasonal Staff	60,168.45
----------------	-----------

GENERAL FUND STATEMENT OF REVENUE & RECEIPTS YEAR ENDED DECEMBER 31, 2003

TAXES		2003	2003 ACTUAL	2004
2003 Current Real Estate Taxes			\$7,670,401.06	
2003 Delinquent Real Estate Taxes			244,778.86	
2000-2002 Delinquent Real Estate Taxes			<u>221,261.97</u>	
			\$8,136,441.89	
ESTIMATED & ACTUAL REVENUE		2003		2004
	EST.			EST.
Penalties & Interest-Taxes	\$ 60,000	68,374.67	65,000	
Liquor Licenses	6,500	6,720.00	6,800	
Dog Licenses	500	-610.00	600	
Town Clerk's Fees	55,000	97,450.87	70,000	
Copying & FAX Fees	7,500	11,414.02	9,000	
Zoning & Septic Fees	10,000	9,573.93	10,000	
Recreation Revenue	62,000	51,035.78	51,000	
Solid Waste User Fees	32,000	35,572.00	33,000	
State Aid - Highways	75,000	78,193.68	78,000	
Gifts & Contributions	81,000	86,891.62	83,000	
Federal & State Land Payments	70,000	74,317.18	72,000	
Traffic Ticket Fees	17,000	15,375.58	17,000	
Equipment Rentals	2,500	2,600.00	2,600	
Computer Revenue	1,000	487.20	500	
Miscellaneous Revenue	2,000	745.10	1,500	
Interest Income	<u>53,000</u>	<u>42,943.08</u>	<u>45,000</u>	
	\$535,000	582,304.71	\$545,000	
OTHER RECEIPTS				
Septic System Evaluations		3,928.20		
Misc. Revenue for Reimbursement		78,279.30		
Recreation Donations		2,796.14		
State portion--Town Clerk License fees		1,973.50		
Land Record Restoration Funds		14,294.00		
Refundable Zoning Deposits		2,220.52		
Alpine Drive & Route 4 Sewer Fund Transfers		229,214.17		
Restricted Funds Transfers		2,656,375.77		
Equipment Replacement Fund		57,692.18		
State Reappraisal Grant		18,528.00		
State Walkway Grant Refund		5,328.81		
Madden House Sale Proceeds		135,445.18		
Revised 2001 & 2002 Topridge Taxes		85,581.82		
Garage Bond		610,000.00		
Tax Sale Receipts		11,365.38		
Tax Anticipation Note		100,000.00		
Golf Receipts		<u>1,768,638.93</u>		
		5,781,661.90		
TOTAL			\$14,500,408.50	

2004 GENERAL FUND BUDGET

	2003 BUDGET	2003 ACTUAL	2004 BUDGET
LEGISLATING			
Salaries & Wages	5,000	6,079.50	6,400
Operating Supplies	200	49.95	100
Advertising	500	262.89	500
Postage & Mailings	100	0.00	50
Dues/Subscriptions/Meetings	700	374.80	700
Legal Services	<u>500</u>	<u>33.75</u>	<u>250</u>
	7,000	6,800.89	8,000
MANAGING MUNICIPALITY			
Salaries & Wages	62,400	62,400.00	64,900
Office Supplies	850	733.79	850
Advertising	600	0.00	500
Postage & Telephone	5,800	5,950.82	6,200
Dues/Subscriptions/Meetings	4,300	3,830.50	4,500
Legal Services	2,000	1,503.23	2,000
Travel & Transportation	<u>50</u>	<u>0.00</u>	<u>50</u>
	76,000	74,418.34	79,000
TOWN MEETING & ELECTIONS			
	1,000	325.00	4,000
TOWN & SCHOOL TREASURER			
	5,000	5,000.00	5,000
BOOKKEEPING & SECRETARIAL			
Salaries & Wages	34,000	32,177.75	36,000
Office Supplies	1,500	1,334.14	1,300
Travel & Transportation	<u>200</u>	<u>59.50</u>	<u>200</u>
	35,700	33,571.39	37,500
AUDITING			
Salaries & Wages	500	82.20	500
Print & Mail Town Report	2,000	1,432.35	2,000
Contracted Services	<u>6,000</u>	<u>5,900.00</u>	<u>0</u>
	8,500	1,714.55	2,500
LISTING			
Salaries & Wages	15,000	7,332.90	12,000
Postage & Supplies	900	490.28	800
Contracted Services	4,000	858.50	4,000
Travel & Transportation	<u>100</u>	<u>136.08</u>	<u>200</u>
	20,000	8,817.76	17,000
TAX COLLECTING			
Office Supplies	1,500	222.50	2,000
Postage & Mailings	<u>2,000</u>	<u>1,395.05</u>	<u>1,500</u>
	3,500	1,617.55	3,500

	2003 BUDGET	2003 ACTUAL	2004 BUDGET
TOWN CLERK			
Salaries & Wages	22,000	24,109.96	25,500
Office Supplies	800	567.04	800
Postage & Mailings	850	1,139.38	950
Dues/Subscriptions/Meetings	850	568.84	750
Printing & Binding	<u>3,000</u>	<u>4,350.80</u>	<u>3,800</u>
	27,500	30,736.02	31,800
INSURANCE	21,000	17,500.00	21,000
LEGAL SERVICES			
Pending Litigation	12,000	2,471.52	8,000
ENGINEERING SERVICES			
Board of Health	250	102.00	250
Capital Projects	3,000	0.00	1,000
General Town Matters	<u>1,000</u>	<u>170.00</u>	<u>250</u>
	4,250	272.00	1,500
PLANNING			
Salaries & Wages	4,000	2,486.05	4,000
Office Supplies	200	5.98	200
Advertising	1,000	524.16	1,000
Postage & Mailings	500	79.60	500
Legal Services	1,000	135.00	1,000
Printing & Copying	200	0.00	200
Travel & Transportation	<u>100</u>	<u>50.00</u>	<u>100</u>
	7,000	3,280.79	7,000
BOARD OF ADJUSTMENT			
Salaries & Wages	1,000	125.00	1,000
Office Supplies	25	0.00	25
Advertising	250	53.11	250
Postage & Mailings	50	63.40	50
Legal Services	200	0.00	200
Travel & Transportation	<u>75</u>	<u>0.00</u>	<u>75</u>
	1,600	241.51	1,600
ZONING ADMINISTRATION			
Salaries & Wages	4,600	4,567.25	4,700
Office Supplies	50	0.00	50
Postage & Mailings	150	95.60	100
Legal Services	700	0.00	500
Travel & Transportation	<u>50</u>	<u>80.50</u>	<u>50</u>
	5,600	4,743.35	5,400

	2003 BUDGET	2003 ACTUAL	2004 BUDGET
TOWN PLANNER			
Salaries & Wages	39,300	39,278.95	40,500
Office Supplies	50	13.87	50
Postage & Mailings	200	102.50	200
Dues/Subscriptions/Meetings	2,250	2,059.02	2,250
Legal Services	100	0.00	100
Travel & Transportation	<u>100</u>	<u>138.25</u>	<u>100</u>
	42,000	41,592.59	43,200
TOWN OFFICE			
Wages & Custodial Services	3,500	3,380.00	3,500
Operating Supplies	1,000	844.82	1,000
Repairs & Maintenance	3,000	2,097.87	3,000
Capital Maintenance Fund	2,000	2,000.00①	2,000
Utilities	<u>5,500</u>	<u>5,581.84</u>	<u>6,000</u>
	15,000	13,904.53	15,500
OFFICE EQUIPMENT			
Supplies	2,000	1,909.78	2,000
Repairs & Maintenance	7,000	6,008.32	7,000
New Equipment	<u>5,000</u>	<u>470.98</u>	<u>4,000</u>
	14,000	8,389.08	13,000
CONSTABLES			
Salaries & Wages	28,500	28,913.68	32,000
Operating Supplies	500	1,191.21	500
Equipment	4,000	2,818.95	6,500
Training	400	110.00	400
Repairs & Maintenance	500	1,151.00	1,000
Contracted Services	0	0.00	2,000
Travel & Transportation	<u>11,000</u>	<u>7,522.30</u>	<u>13,000</u>
	44,900	41,707.14	55,400
FIRE DEPARTMENT			
Salaries & Wages	6,000	6,000.00	6,000
Operating Supplies	4,500	1,522.07	3,100
Small Tools & Equipment	7,400	8,081.13	8,100
Dues & Training	6,100	3,122.97	5,600
Insurance	9,500	9,636.56	9,700
Equipment Maintenance	18,650	15,087.00	20,700
Travel & Transportation	25,000	20,010.00	24,000
Utilities	8,400	10,495.82	9,000
Vehicle Operation	1,750	1,959.99	2,000
Building Maintenance	6,000	7,714.20	9,000
New Equipment	15,400	8,629.99	20,900
First Response	2,500	1,780.10	800
Grant Matching Funds	0	0.00	1,000
Capital Fund	<u>85,000</u>	<u>85,000.00②</u>	<u>85,000</u>
	196,200	179,039.83	204,900

①\$2,000.00 transferred to Restricted Funds

②\$46,900.00 transferred to SVFD Capital Fund

	2003 BUDGET	2003 ACTUAL	2004 BUDGET
SUMMER ROADS			
Salaries & Wages	78,000	74,367.52	79,500
Operating Supplies	30,000	25,736.06	30,000
Rentals & Other Services	14,000	15,022.50	14,000
Beautification Projects	<u>25,000</u>	<u>24,058.63</u>	<u>25,000</u>
	147,000	139,184.71	148,500
WINTER ROADS			
Salaries & Wages	90,000	99,901.87	93,000
Operating Supplies	98,000	86,609.52	98,000
Rentals & Other Services	<u>18,000</u>	<u>18,249.50</u>	<u>18,000</u>
	206,000	204,760.89	209,000
TRAFFIC CONTROL DEVICES			
Salaries & Wages	2,000	735.95	2,000
Operating Supplies	2,500	1,545.08	2,400
Repairs & Maintenance	5,000	1,045.65	5,000
Utilities	<u>2,700</u>	<u>2,559.58</u>	<u>2,600</u>
	12,200	5,886.26	12,000
BRIDGE/LARGE CULVERT MAINT.			
Salaries & Wages	1,000	0.00	1,000
Supplies/Contracted Svcs/Capital Fund	<u>7,000</u>	<u>7,000.00</u> ③	<u>7,000</u>
	8,000	7,000.00	8,000
STREET & WALKWAY LIGHTS	33,000	29,677.56	32,000
RADIOS	5,000	3,928.00	4,500
TOWN GARAGE			
Salaries & Wages	3,000	5,960.47	3,500
Operating Supplies	900	1,600.60	1,000
Small Tools & Equipment	5,000	2,735.43	3,000
Repairs & Maintenance	4,000	3,625.18	4,000
Utilities	<u>9,500</u>	<u>12,713.48</u>	<u>11,000</u>
	22,400	26,635.16	22,500
VEHICLES			
Salaries & Wages	42,000	31,753.86	43,000
Operating Supplies	56,000	58,777.56	57,000
Repair Supplies	9,000	7,067.61	9,000
Repairs & Maintenance	<u>12,000</u>	<u>16,339.97</u>	<u>14,000</u>
	119,000	113,939.00	123,000

③ \$5,009.35 transferred to Restricted Funds

	2003 BUDGET	2003 ACTUAL	2004 BUDGET
SOLID WASTE DISPOSAL			
Salaries & Wages	11,000	11,308.25	11,750
Operating Supplies	300	128.57	250
Small Tools & Equipment	100	122.74	100
Repairs & Maintenance	600	608.00	600
Contracted Services - Solid Waste	34,000	32,894.90	34,000
Contr. Services - Recycling	5,500	5,447.75	5,500
Utilities - Electric	<u>700</u>	<u>1,224.09</u>	<u>1,200</u>
	52,200	51,734.30	53,400
RECREATION			
Salaries & Wages	103,500	94,177.55	96,500
Dues/Subscriptions/Meetings	1,000	779.54	1,700
Pool Supplies & Chemicals	6,000	3,636.44	6,000
Facilities Repairs & Maintenance	5,800	5,053.05	11,300
Programs & Special Events	32,500	33,216.89	26,000
Small Tools & Equipment	500	34.70	500
Advertising, Mailings & Supplies	1,600	1,111.38	2,000
Utilities	<u>10,000</u>	<u>8,951.87</u>	<u>10,900</u>
	160,900	146,961.42	154,900
LIBRARY			
Salaries & Wages	75,000	72,821.77	78,500
Supplies & Postage	5,000	4,681.35	4,000
Books	12,000	12,068.26	14,000
Magazines & AV Materials	7,000	6,995.82	7,000
Dues, Workshops & Travel	2,750	2,730.07	3,800
Programs & Special Events	500	460.95	500
Building Maintenance	9,000	13,131.12	10,500
Equipment Maintenance & Repair	3,950	5,436.42	4,400
Telephone & Telecom	2,300	2,134.20	2,300
Utilities	14,500	17,774.45	16,000
Computer Upgrade	0	0.00	4,000
Capital Maintenance Fund	<u>1,000</u>	<u>1,000.00</u> ④	<u>1,000</u>
	133,000	139,234.41	146,000
APPROPRIATIONS			
Rutland County Tax,	69,000	64,583.28	68,000
Cemeteries	4,000	4,000.00	4,000
Ambulance Service	4,650	4,654.00	4,650
Visiting Nurses & Hospice	3,200	3,200.00	2,300
Rutland Mental Health Services	1,200	1,200.00	1,200
Southwestern VT Council on Aging	800	800.00	800
Rutland Regional Planning Commission	500	500.00	500
Rutland County - A.R.C.	350	350.00	350
Rutland County Women's Shelter	350	350.00	350
Rutland County Humane Society	300	300.00	300
Retired Senior Volunteer Program	200	200.00	200
Fire Warden	<u>200</u>	<u>200.00</u>	<u>200</u>
	84,750	80,337.28	82,850

④\$1,000.00 transferred to Restricted Funds

	2003 BUDGET	2003 ACTUAL	2004 BUDGET
CAPITAL PROJECTS			
Bituminous Resurfacing	130,000	130,000.00⑤	140,000
Gravel Resurfacing	50,000	52,317.50	45,000
Equipment Replacement	90,000	90,000.00	90,000
Recreation Capital & Repairs Fund	35,000	35,000.00⑥	35,000
Town Garage Replacement Project	<u>35,000</u>	<u>35,000.00</u>	<u>0</u>
	340,000	342,317.50	310,000
EMPLOYEE BENEFITS			
Health Insurance	155,000	153,671.40	184,000
Social Security	53,000	52,330.87	54,500
Vacation/Holiday/Sick	49,500	50,470.00	52,000
Municipal Retirement System	49,500	48,936.36	52,500
Worker's Comp. Insurance	14,000	13,816.70	19,000
Unemployment Comp. Insurance	6,500	6,500.00	8,000
Uniforms	<u>2,000</u>	<u>1,498.02</u>	<u>2,000</u>
	329,500	327,223.35	372,000
BONDED INDEBTEDNESS			
Golf Course Land	82,000	82,000.00	82,000
Library Project	85,600	85,543.00	83,450
Town Garage	<u>10,000</u>	<u>7,888.57</u>	<u>55,900</u>
	177,600	175,431.57	221,350
ACT 60 & NH PETITION			
Legal & Other	25,000	58,201.36	20,000
ELEM. SCHOOL RENTAL			
	27,000	27,000.00	0
WUHS SCHOOL RENTAL			
	<u>19,000</u>	<u>18,700.00</u>	<u>0</u>
	46,000	45,700.00	0
TOTALS - GENERAL FUND	\$2,449,300	2,379,996.61	\$2,484,800

- ⑤ \$20,369.07 transferred to Restricted Funds
 ⑥ \$18,519.93 transferred to Restricted Fund

2003 ACTUAL

OTHER EXPENDITURES

School Assessments:

Elementary	321,043.00
High School	711,528.00
State-Wide Property Tax	2,626,838.31
State Tax (due June 2004)	2,626,838.31①
Septic System Permits	3,576.77
Reimbursable Miscellaneous Expenses	78,279.30
Recreation Donation Expenses	2,796.14
Refundable Zoning Deposits (2003 Permits)	2,220.52②
State Portion of Town Clerk Fees	1,973.50
Land Record Restoration Expenses & Transfer	14,294.00③
Alpine Drive & Route 4 Sewer Fund Expenses	229,214.17
Expenses from Restricted Funds	2,656,375.77
Equipment Replacement Fund Expenses	57,692.18
Tax Sale Reimbursements	11,365.38
TopRidge Taxes (under appeal)	85,581.82④
State Reappraisal Grant Expenses & Transfer	18,528.00⑤
State Walkway Grant Refund Transfer	5,328.81⑥
Garage Bond Expenses	610,000.00
Tax Anticipation Note	100,000.00
Golf Expenses	<u>1,899,459.96</u>
	12,198,379.12

TOTAL EXPENDITURES

\$14,578,375.73

Net Decrease in Cash on Hand
Jan. 1, 2003 to Jan. 1, 2004

(77,967.23)

TOTAL

\$14,500,408.50

- ① \$2,626,838.31 transferred to Restricted Funds
- ② \$1,840.00 transferred to Restricted Funds
- ③ \$11,874.00 transferred to Restricted Funds
- ④ \$85,581.82 transferred to Restricted Funds
- ⑤ \$10,652.71 transferred to Restricted Funds
- ⑥ \$5,328.81 transferred to Restricted Funds

TOWN & SCHOOL BUDGET SUMMARY

AND ANTICIPATED 2004 TAX RATE

	2003	2004
TOWN		
Expenditures - General Fund Budget	\$2,449,300	\$2,484,800
Revenues		
Non-Tax Revenues	(535,000)	(545,000)
Excess Cash on Hand - General Fund	(65,000)	(70,000)
TOTAL RAISED BY TOWN TAXES	\$1,849,300	\$1,869,800
SCHOOL		
Expenditures		
Elementary Budget	\$1,268,905	\$1,234,191
High School - Killington Share	711,528	822,204
Revenues		
Local Revenues	(197,364)	(278,030)
Block Grant - Statewide Property Tax	(866,910)	(977,228)
Other State & Federal Revenues	(243,302)	(216,928)
Non-governmental Grants, Gifts, & Donations	(551,675)	0
TOTAL ABOVE BLOCK GRANT SPENDING	\$ 121,182	\$ 584,209
Less Capital debt hold-harmless aid	(102,972)	(97,568)
Adjusted Above Block Grant Spending	\$ 18,210	\$ 491,641
STATE OF VERMONT		
Statewide School Property Tax (2003)	\$6,120,587	
Local Share School Tax to State (2003)	147,451	\$8,459,413
Non-Residential Statewide School Prop. Tax (2004)		1,261,024
Residential Statewide School Property Tax (2004)		
Estimated NON-RESIDENTIAL Education Grand List	5,015,768	5,500,000
Estimated RESIDENTIAL Education Grand List	730,000	800,000
(Ski Lifts & Snowmaking in Ed. G.L. 2003)	<u>210,200</u>	<u>0</u>
ESTIMATED TOTAL EDUCATION GRAND LIST	5,955,968	6,300,000
ESTIMATED MUNICIPAL GRAND LIST	6,040,311	6,550,000
(Including Ski Lifts & Snowmaking)		
Resultant TOTAL NON-RESIDENTIAL TAX RATE	1.362	1.824
Resultant TOTAL RESIDENTIAL TAX RATE	1.362	1.862
Total Tax Rate Breakdown:		
Town Tax Rate	0.306	0.285
Statewide School Tax Rate (2003)	1.028	
Local Share School Tax Rate (2003)	0.028	
Non-Residential Statewide School Tax Rate (2004)		1.538
Residential Statewide School Tax Rate (2004)		1.576

SCHOOL REPORTS

SHERBURNE ELEMENTARY SCHOOL 2003-2004

PRINCIPAL

Marion Withum

STAFF

Irene Gilles	Kindergarten
Melissa Knipes	Grade 1
Lisa Laird	Grade 2
Kathleen Carey	Grade 3
Maria Garland	Grade 4
Thomas Williamson	Grade 5
Barbara Kahler	Grade 6
Loren Pepe	Special Educator
Joan Wise	Discovery
Eileen Vaughn	Librarian
Debora Ledoux	Music
Gregory LaBella	Physical Education
Marte Anderson	French
Murray Ngoima	Art
Maureen Schillinger	Guidance
Dale Bartl	Nurse/Health Educator
Deborah Doenges	Administrative Assistant
Phebe Gordon	General Aide
Elizabeth Hike	General Aide
Patricia MacLaughlan	General Aide

SUPPORT STAFF

Gail Flynn
David Cleaves

Cafeteria
Custodian

ENROLLMENT

Grade	Resident	Non-Resident	Total
Kindergarten	10	3	13
Grade 1	4	4	8
Grade 2	8	2	10
Grade 3	6	6	12
Grade 4	8	1	9
Grade 5	13	2	15
Grade 6	<u>16</u>	<u>2</u>	<u>18</u>
Totals	65	20	85

ELEMENTARY SCHOOL PRINCIPAL'S REPORT

The 2003-04 academic year for Sherburne Elementary School began on September 2 with 85 students enrolled, 65 residents and 20 tuition students.

Amy Ladabouche was hired to replace Tom Williamson, fifth grade teacher, who retired ending a 33-year long career in education. Ms. Ladabouche is a recent graduate of University of Vermont and a member of the National Society of Collegiate Scholars. Murray Ngoima, who teaches art, replaced Todd Renninger. Ms. Ngoima, who also teaches art in Pomfret and Bridgewater, has a rich background teaching in Boston Public Schools as well as Nairobi, Kenya.

In keeping with our commitment to quality and continuous improvement, Vermont Institutes conducted a curriculum review of the school's math program, "Investigations in Numbers, Data and Space," which was implemented in 1999. The summary report identified a number of strengths. Recommendations were in keeping with the school's Action Plan. Although our math scores have risen significantly in the past four years, the sample size of less than 20 remains statistically unreliable. This measure was therefore taken to insure our students are progressing toward established goals.

New to the curriculum this year was fourth grade's participation in Starbase. This hands-on curriculum integrates science, mathematics, technology, physics and team building. The teaching environment varies with students spending time at the Rutland Armory and the Rutland Airport. Starbase receives federal funding from the Department of Defense. Additional resources from Starbase, Vermont, Inc. allow schools to participate at no cost to the local district.

Through Medicaid funding, we were again able to offer a summer session to support those students who would be at risk for maintaining skills in math and reading. The reinforcement students receive during the summer months also helps to reduce the amount of time spent on review when school resumes.

John Hopkins University Center for Talented Youth conducts a survey each year to identify, assess and recognize the academic abilities of high achieving students. To qualify, fifth and sixth grade students must score at or above the 97th percentile in reading, math or science on a nationally normed test. We were pleased that 41% of our fifth and sixth graders qualified for CTY.

In collaboration with SES, the Vermont Achievement Center opened an Early Education program and an After-School Enrichment program for the 2003-04 school year. The VAC, a social service and education agency serving Vermont families and children since 1937, has an excellent and longstanding reputation for providing programs of the highest quality. The Early Education program helps acclimate young children to the school. The After-School Enrichment program benefits working parents. Both programs are fee-based.

The Student Council represents the student body, helps the principal with school governance and models community service through ongoing activities. This year's officers are:

Student Council President, Dustin Finer
Vice President, Austin Blackman

Recorder, Melissa Werle
Treasurer, Tyler Hogstrom

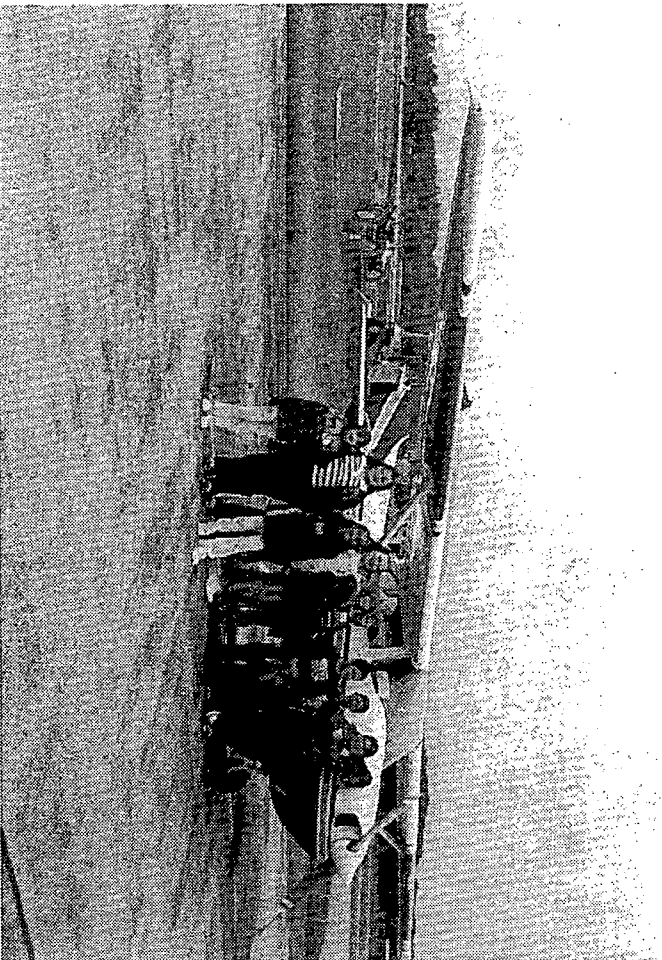
The reforms of Act 60, Vermont's education funding law continues to place an enormous burden on our school and the taxpayers of Killington. As we look to the future, we continually strive to provide high quality opportunities for student learning while controlling cost.

The benefits our students receive from volunteers are many. We thank them for sharing their time and talents on a regular basis.

The Board of School Directors, Principal, teachers and students thank all members of our community for their ongoing support as we continue to provide a solid educational foundation for all students.

Respectfully submitted,

Marion Withum
Principal



4th GRADERS AT STARBASE

ELEMENTARY SCHOOL DIRECTOR'S REPORT

Something very interesting happened as a result of the passage of Act 60. Residents and non-residents, business owners and staff people, voters and non-voters all decided that this bill was not in the best interest of our community. Since it adversely affected everyone in the town we made a choice. We decided to act as a community.

First we took advantage of a clause in the original law, which allowed us to keep some of the additional money the town was now required to raise. The state changed this part of the law the next year. The voters at town meeting put that money in an account, which could only be used to help reduce future tax impacts. Every year at town meeting any surplus from the previous year has been voted into that same account. Some of that money was applied to last year's budget and more will be applied in this year's.

Through the Freeman Foundation and the Sherburne Education Fund we were able to keep tax rates as low as the law would allow. The education fund would not have been successful without the support of the community. Residents, second homeowners and businesses all benefited from the fund. So did the children in our school.

Now with the passage of Act 68 we have been hit again. The education fund has been rendered ineffective. Any money they raise will be subtracted from what the state would have sent us under the law. Reductions in the budget will have no effect on business or second homeowner tax rates. These tax rates have been set by the state and can only be changed by the state. Act 68 has officially split our community.

Over the last seven years the school board and administration have sought to absorb increases in one area of the budget with cuts in another. This year's expenditures will be slightly less than they were seven years ago. We have been able to do this without going into direct instruction (classroom teachers).

This year we had more input during the budget process than at any time in recent memory. This year's budget is the result of trying to find a balance between the children's needs in the classroom and increasing tax rates. Some feel we went too far and others feel we didn't go far enough.

These discussions will not end here. As long as we operate under the current school funding structure we will have to make hard decisions. These decisions will get harder each year. We hope that the voters will continue to stay involved so that these decisions are made by an informed community of voters. Thank you for your continued support.

Respectfully submitted,
Stephen Finneron
Chairman

SCHOOL TREASURER REPORTS

JULY 1, 2002 - JUNE 30, 2003

GENERAL FUND

Beginning Balance July 1, 2002	\$ 194,180.93
Receipts	388,146.44
Town Tax	298,056.00
WUHS Tax	729,177.00
Sherburne Education Foundation	460,000.00
Interest Earned	2,809.91
	<u>2,072,370.28</u>
	(2,051,046.74)
Disbursements	\$ <u>21,323.54</u>
Balance June 30, 2003	

BUILDING RESERVE FUND

Beginning Balance July 1, 2002	\$17,382.12
Transferred from Tax Reduction Account	50,000.00
Interest Earned	<u>353.58</u>
	67,735.70
	<u>(32,946.97)</u>
Disbursed through General Fund	<u>\$34,788.73</u>
Balance June 30, 2003	

FUTURE TAX REDUCTION ACCOUNT

Beginning Balance July 1, 2002	\$266,391.15
Future Tax Reduction voted 3/4/03	51,002.67
From General Fund (2002 transfer error)	1,201.00
Interest Earned	<u>4,765.22</u>
	323,360.04
	<u>(50,000.00)</u>
Transferred to Building Reserve Fund	<u>\$273,360.04</u>
Balance June 30, 2003	

CONSTRUCTION ACCOUNT

Beginning Balance July 1, 2002	\$10,442.65
Interest Earned	<u>105.91</u>
	10,548.56
	<u>(2,968.53)</u>
Transferred to General Fund	<u>\$ 7,580.03</u>
Balance June 30, 2003	

Respectfully submitted,

Patricia A. Keim
Treasurer

**Sherburne School District
Revenue Report and Proposed Budget
2004-2005 Budget Year**

	Budget 2002-03	Actual 2002-03	Budget 2003-04	Proposed 2004-05
Local Revenue				
Prior Year Surplus Applied	\$118,799	\$118,799	\$91,675	\$75,000
Tuition	\$122,485	\$124,296	\$149,864	\$187,030
Bus Pass Receipts		\$68		
Food Service Revenue	\$16,000	\$15,564	\$15,000	\$15,000
Interest	\$4,000	\$2,810	\$2,500	\$1,000
Rental Income	\$28,180	\$27,466	\$30,000	\$0
Sherburne Education Foundation	\$460,000	\$460,000	\$460,000	\$0
Refund of Prior Year Expenses		\$170		
Miscellaneous		\$10		
VT Agriculture Grant		\$100		
State & Federal Revenues				
Special Ed Mainstream Block Grant	\$42,559	\$42,559	\$43,681	\$39,002
Special Ed Intensive Reimbursement	\$60,000	\$67,095	\$65,000	\$70,000
Special Ed EEE Grant	\$7,238	\$7,263	\$7,006	\$4,633
State Lunch Match	\$463	\$513	\$500	\$475
State Lunch Reimbursement	\$5,500	\$6,003	\$7,000	\$6,000
National Forest Land		\$904		
State Transportation Reimbursement.	\$47,982	\$47,982	\$46,709	\$46,818
State Transp. Reimb. - Prior Year		(\$427)		
Small Schools Fin. Stability Grant			\$17,518	
Sub-Total	\$46,838	\$46,838	\$55,888	\$50,000
	\$960,044	\$968,003	\$992,341	\$494,958
Local Education Spending				
Property Taxes - Education Fund		\$148,982		\$1,468,869
Transfer from Education Fund				\$92,568
Capital Debt Hold Harmless Aid	\$107,826	\$106,922	\$102,972	
General State Support Grant	\$859,112	\$860,170	\$866,910	
Local Ed Tax Retained	\$18,235	\$18,081	\$18,210	
Sub-Total	\$985,173	\$1,134,155	\$988,092	\$1,561,437
Total Revenue K-12	\$1,945,217	\$2,102,158	\$1,980,433	\$2,056,395

Sherburne School District
Expenditure Report and Proposed Budget
2004-2005 Budget Year

	Budget	Actual	Budget	Proposed
	2002-03	2002-03	2003-04	2004-05
DIRECT INSTRUCTION				
Teachers	\$361,201	\$372,461	\$382,935	\$371,257
Teacher-Early Retirement Incentive		\$16,850		
Classroom Aides	\$26,327	\$26,570	\$27,367	\$19,587
Substitutes	\$4,000	\$2,320	\$4,500	\$4,500
Music Residency Programs				\$4,000
Art	\$700	\$423	\$700	\$700
Language Arts	\$2,000	\$1,890	\$2,000	\$1,500
French	\$300	\$35	\$300	\$300
Physical Education	\$800	\$732	\$800	\$500
Math	\$3,000	\$2,708	\$2,500	\$2,000
Music	\$500	\$607	\$500	\$500
Science	\$3,000	\$1,769	\$2,500	\$2,000
Health Education	\$400	\$404	\$400	\$400
Reading	\$2,500	\$2,278	\$2,000	\$1,500
Social Studies	\$2,000	\$1,606	\$2,000	\$1,500
General	\$4,000	\$3,698	\$4,000	\$4,000
Discovery	\$500	\$539	\$500	\$500
Total Supplies/Materials	\$19,700	\$16,688	\$18,200	\$15,400
Total Direct Instruction	\$411,228	\$434,889	\$433,002	\$410,744

SPECIAL EDUCATION

Teachers Salary	\$34,530	\$34,991	\$36,257	\$39,430
Health Insurance	\$8,162	\$8,162	\$9,227	\$10,659
Social Security	\$2,642	\$2,491	\$2,774	\$3,016
Life Insurance	\$35	\$34	\$35	\$35
Workers' Comp	\$86	\$111	\$142	\$185
Continuing Education	\$640	\$640		
OT Equipment	\$100			
Assessment/Evaluation	\$2,400	\$5,425	\$3,000	\$3,000
Educational Materials	\$500	\$430	\$500	\$400
Pre-School Tuition	\$0	\$625	\$2,072	\$1,500
ESY Purchased Services	\$0	\$200		
ESY Salary	\$0	\$1,890		
ESY Social Security	\$0	\$145		
EEE ESY Purchased Services	\$0	\$63	\$432	\$4,320
EEE Purchased Services	\$0			
EEE ESY Transportation	\$0			
Total Special Education	\$49,095	\$55,206	\$54,529	\$62,545

GUIDANCE

Salary - Counselor	\$10,363	\$10,363	\$10,881	\$8,881
Materials/Supplies	\$300	\$424	\$300	\$300
Testing	\$500	\$288	\$500	\$500
Total Guidance	\$11,163	\$11,075	\$11,681	\$9,681

Sherburne School District
Expenditure Report and Proposed Budget
2004-2005 Budget Year

	Budget 2002-03	Actual 2002-03	Budget 2003-04	Proposed 2004-05
SCHOOL NURSE				
Salary - Nurse	\$21,881	\$21,882	\$22,976	\$7,813
Materials/Supplies	\$500	\$498	\$500	\$500
Total School Nurse	\$22,381	\$22,380	\$23,476	\$8,313
MEDIA				
Salary - Librarian	\$24,615	\$24,615	\$25,846	\$8,789
Media Supplies	\$1,000	\$952	\$1,000	\$1,000
Books & Periodicals	\$5,000	\$4,883	\$4,500	\$4,500
ELF/Other Programs	\$5,500	\$3,645	\$5,000	\$2,500
Repair of Equipment	\$1,500	\$1,373	\$1,500	\$1,500
Equipment - Computers	\$5,000	\$4,964	\$5,000	\$0
Audio Visual	\$400	\$250	\$400	\$400
Total Media	\$43,015	\$40,682	\$43,246	\$18,689
BOARD OF EDUCATION				
Salaries	\$1,797	\$1,799	\$1,797	\$1,797
Secretary's Salary	\$599	\$599	\$599	\$599
Legal Services	\$500	\$500	\$500	\$500
Treasurer's Expense	\$200	\$211	\$200	\$200
School Board Expense	\$1,000	\$227	\$1,000	\$500
Advertising	\$500	\$1,289	\$500	\$500
Audit			\$1,800	\$800
VSBA Dues	\$850	\$850	\$875	\$1,050
Total Board of Education	\$5,446	\$4,974	\$7,271	\$5,946
SCHOOL ADMINISTRATION				
Salary - Principal	\$52,963	\$52,963	\$55,611	\$56,734
Salary - Secretary	\$14,124	\$14,124	\$14,548	\$14,984
Professional Development	\$10,000	\$7,187	\$10,000	\$10,000
Prof. Developmt Non-Contract	\$2,000	\$1,720	\$2,000	\$0
Operating Expenses	\$11,000	\$11,422	\$11,000	\$9,000
Total School Administration	\$90,087	\$87,416	\$93,159	\$90,718
FISCAL SERVICES				
Health Insurance	\$107,542	\$102,646	\$117,690	\$121,837
Dental Insurance	\$9,370	\$9,882	\$9,458	\$9,575
Social Security	\$41,764	\$42,077	\$44,067	\$40,152
Life Insurance	\$630	\$605	\$635	\$565
Workers' Compensation	\$2,050	\$2,742	\$3,495	\$3,980
Municipal Retirement	\$3,153	\$3,153	\$3,247	\$3,344
TSA	\$2,000	\$2,000	\$2,000	\$2,000
Unemployment	\$0	\$7		
Property/Liability Insurance	\$5,528	\$6,307	\$7,500	\$8,707
School Board Legal Liability Ins.	\$434	\$699	\$900	\$1,490
Bond	\$175	\$221	\$300	\$265
Total Fiscal Services	\$172,646	\$170,339	\$189,292	\$191,916

Sherburne School District
Expenditure Report and Proposed Budget
2004-2005 Budget Year

	Budget 2002-03	Actual 2002-03	Budget 2003-04	Proposed 2004-05
OPERATION OF PLANT				
Salary-Custodians	\$30,458	\$30,458	\$31,372	\$32,314
Repairs/Contracted Services	\$5,000	\$6,406	\$5,000	\$5,000
Supplies	\$7,000	\$6,239	\$7,000	\$7,000
Equipment	\$1,000	\$915	\$1,000	\$1,000
Total Operation of Plant	\$43,458	\$44,018	\$44,372	\$45,314
UTILITIES				
Telephone	\$4,400	\$3,823	\$4,600	\$4,600
Propane Gas	\$2,530	\$1,871	\$2,700	\$2,500
Electricity	\$25,563	\$19,149	\$25,563	\$23,000
Heat	\$16,500	\$9,964	\$16,500	\$14,000
Sewer Fees	\$2,970	\$2,738	\$2,970	\$3,100
Refuse Removal	\$2,035	\$1,956	\$2,100	\$2,300
Total Utilities	\$53,998	\$39,500	\$54,433	\$49,500
TRANSPORTATION				
Contracted Services	\$99,065	\$97,537	\$101,034	\$116,189
Field Trips	\$2,500	\$3,087	\$2,500	\$2,500
Total Transportation	\$101,565	\$100,624	\$103,534	\$118,689
FOOD SERVICES				
Salary - Director	\$12,132	\$12,132	\$12,496	\$12,874
Salary - Substitutes	\$200	\$170	\$200	\$200
Equipment/Repairs	\$500	\$137	\$500	\$500
Supplies	\$15,500	\$12,255	\$15,500	\$15,500
Social Security	\$928	\$679	\$956	\$985
Group Health Insurance	\$7,587	\$7,587	\$9,029	\$9,909
Dental Insurance	\$650	\$709	\$780	\$803
Term Life Insurance	\$35	\$34	\$35	\$35
Municipal Retirement	\$607	\$607	\$625	\$644
Workers Comp	\$303	\$430	\$540	\$667
Total Food Services	\$38,442	\$34,740	\$40,661	\$42,117
CAPITAL OUTLAY				
Site Development	\$3,000	\$693	\$3,000	\$2,000
Equipment	\$2,500	\$2,136	\$2,500	\$2,000
Total Capital Outlay	\$5,500	\$2,829	\$5,500	\$4,000
WCSSU ASSESSMENTS				
Executive Administration	\$27,874	\$27,874	\$27,247	\$32,582
EEE	\$7,133	\$7,133	\$10,801	\$12,504
Special Education	\$15,063	\$15,063	\$14,038	\$17,050
OT	\$2,199	\$2,199	\$2,044	\$2,693
Curriculum Director	\$1,649	\$1,649	\$1,333	\$1,584
Total WCSSU Assessments	\$53,918	\$53,918	\$55,463	\$66,413
TOTAL OPERATING BUDGET	\$1,101,942	\$1,102,590	\$1,159,619	\$1,124,585

**Sherburne School District
Expenditure Report and Proposed Budget
2004-2005 Budget Year**

	Budget	Actual	Budget	Proposed
	2002-03	2002-03	2003-04	2004-05

DEBT SERVICE

Principal - Bond 1	\$55,000	\$55,000	\$55,000	\$55,000
Interest - Bond 1	\$39,793	\$39,793	\$36,768	\$33,743
Principal - Bond 2	\$15,000	\$15,000	\$15,000	\$15,000
Interest - Bond 2	\$2,625	\$2,625	\$1,898	\$1,151
Total Debt Service	\$112,418	\$112,418	\$108,666	\$104,894

TOTAL K-6 COSTS

Payments to Education Fund	\$1,214,360	\$1,215,008	\$1,268,285	\$1,229,479
Vocational Tuition	\$1,680	\$780	\$620	\$4,712
Total Budget to be Voted	\$1,216,040	\$1,364,770	\$1,268,905	\$1,234,191

HIGH SCHOOL COSTS

WUHS Assessments	\$729,177	\$729,177	\$711,528	\$822,204
------------------	-----------	-----------	-----------	-----------

TOTAL K-12 COSTS

	\$1,945,217	\$2,093,947	\$1,980,433	\$2,056,395
--	-------------	-------------	-------------	-------------



KINDERGARTEN CLASS AT HINTERLAND

Sherburne School District
Balance Sheet
30-Jun-03

Assets	
Checking Account	\$13,633
First Vermont Bank	\$2,611
First Vermont Bank	\$5,080
Bond Fund/Construction Account	\$7,580
Investments - Reserve Funds	\$273,360
Money Market - Maintenance Fund	\$34,789
Accounts Receivable	\$3,541
Prepaid Expense	\$930
Total Assets	<u>\$341,523</u>
Liabilities	
Accounts Payable	\$5,781
Accrued Payroll	\$18,139
	\$23,920
Reserves	
Reserve for Bond/Construction	\$1,430
Reserve for Encumbrances	\$4,423
Reserve for E-Rate Discounts	\$3,324
Reserve for Language Assessment Grant	\$4,025
Reserve for Maintenance	\$19,550
Total Reserves	\$32,752
Fund Balance	
Designated Fund Balance	\$273,360
Undesignated Fund Balance	
Balance Reported June 30, 2002	\$51,003
Prior Year Adjustments	\$3,279
	\$54,281
Voted for Future Tax Reduction	(\$51,003)
	\$3,279
Revenue 2002-03	\$2,102,158
Expenses 2002-03	(\$2,093,945)
Operating Surplus 2002-03	\$8,213
Undesignated Balance June 30, 2003	\$11,491
Total Liabilities, Reserves, Fund Balance	<u>\$341,523</u>

**Sherburne Elementary School
2003-2004 School Year**

Withum, Marion	\$55,611
Carey, Kathleen	\$49,592
Garland, Maria	\$49,592
Ngoima, Virginia Murray	\$8,980
Anderson, Marie	\$7,513
Gilles, Irene	\$33,338
Knipes, Melissa	\$42,697
Kahler, Barbara	\$44,458
LaBella, Gregory	\$18,020
Laird, Lisa	\$42,697
Ledoux, Debora	\$8,892
Ladabouche, Amy	\$32,321
Wise, Joan	\$27,772
Hike, Elizabeth	\$10,908
Gordon, Phebe	\$6,674
MacLauchlan, Patricia	\$11,547
Schilling, Maureen	\$10,674
Barl, Dale	\$22,538
Vaughn, Eileen	\$25,354
Doenges, Deborah	\$14,548
Cleaves, David	\$27,935
Flynn, Gail	\$12,499
Pepe, Loren	\$37,913

**Sherburne School District
Statement of Long Term Debt
30-Jun-03**

	Balance 7/1/2002	Principal Decrease	Balance 6/30/2003
Depository Trust Co. \$1,109,000 @ 5.79% Semi-annual interest payments Principal due Aug. 1 each year until 2014	\$715,000	\$55,000	\$660,000
VT Municipal Bond Bank \$170,000 @5.48% Semi-annual interest payments Principal due Dec. 1 each year until 2005	\$60,000	\$15,000	\$45,000

THREE PRIOR YEARS COMPARISONS

District: Sherburne	LEA: 188			
County: Rutland	SU: Windsor Central			
	FY2002	FY2003	FY2004	FY2005
Expenditures:				
Budget (local budget approved in prior years)	1,216,110	1,216,040	1,268,905	1,234,191
82% of base paymt per FTE to tech ctrs by State on behalf of District				3,067
S. U. Assessment (included in local budget)	59,754	53,917	55,463	66,413
Deficit (if included in local budget)				
Block grant pd by State to Tech Ctrs in prior year	2,016	2,059	1,627	0
Act 68 local adopted budget	1,218,126	1,218,099	1,270,532	1,234,191
Union School Assessment	614,007	729,177	711,528	822,204
Special Program Expense				
Gross Act 68 Budget	1,832,133	1,947,276	1,982,060	2,056,395
Revenues:				
Local Revenues	828,359	960,044	992,341	494,958
Capital Debt Aid	110,299	106,922	102,972	92,568
Special Programs Revenue				
Act 144 Revenues				
Fundraising				
Adjusted local revenues	481,801	606,966	635,313	567,526
Total Revenues	938,658	1,066,966	1,095,313	587,526
Education Spending (Act 68 Definition) #9-#16	1,350,332	1,340,310	1,346,747	1,468,869
Equalized Pupils	160.53	154.91	149.49	144.26
Education Spending per Equalized Pupil	8,412	8,652	9,009	10,182
Excess Spending per Equalized Pupil	n/a	n/a	n/a	0
Per pupil figure used for calculating Dist. Adj.				10,182
District spending adjustment	\$10,182/\$6,800	n/a	n/a	149.735%
Anticipated homestead tax rate, equalized	149.735% x \$1.10	n/a	n/a	\$1.647
Household Income % for income sensitivity	149.735% x 2.0%	n/a	n/a	2.99%

OTHER GOVERNMENTAL REPORTS

SHERBURNE VOLUNTEER FIRE DEPT.

As I look back on my first year as Chief, I would like to thank the department for its support. What everyone in town should know is what it takes to be a department. First and foremost are members, then equipment. When you see a fire truck respond to a call what you do not see is the hours of training and dedication of the membership.

This past year saw our members respond to less than 300 calls and partake in a variety of training, such as Self Contained Breathing Apparatus (S.C.B.A.), Hazardous Material training, CPR, and heavy rescue techniques.

Some of our new equipment was purchased through Homeland Security Grants. There are many hours put in just to keep our equipment ready for use. We meet every Tuesday evening 7:00-9:00. Stop by and meet your department; better yet, why not join and help yourself and others. You might like to be involved with our first response team doing medical or maybe becoming a fire fighter or both. Female or male, there is a role for both in each area. Remember, it might be someone you know or a property you own that you save when you join.

The Sherburne Volunteer Fire Department will be celebrating its 50th anniversary in 2005.

Respectfully submitted,

Steve Finer
Chief

S.V.F.D. FINANCIAL REPORT

Beginning Balance January 1, 2003			\$20,342.10
Restricted Donations			
First Response	2,661.00		
Sunrise	5,000.00		
Explorer Program	25.00		
Grant	<u>1,000.00</u>		
Total Restricted Donations		8,686.00	
Unrestricted Donations			
Wobbly Barn	5,525.00		
General	400.00		
July 4 th Fundraisers, net	<u>8,045.49</u>		
Total Unrestricted Donations		13,970.49	
Investment Income		173.29	
Billed Calls		4,452.03	
Reports		<u>15.00</u>	
			27,296.81
			<u>44,916.23</u>
Expenditures			
Capital Expenditures			
Aerial Truck	157.65		
Dress Clothing	380.00		
Equipment	<u>3,243.00</u>		
Total Capital Expenditures		3,780.65	
Good & Welfare Expenses	2,998.67		
Operating Expenses	9,199.66		
Donations	<u>1,136.00</u>		
Total Other Expenditures		<u>13,334.33</u>	
Total Expenditures			<u>(17,114.98)</u>
Balance December 31, 2003			<u>\$30,523.93</u>

Respectfully submitted,

Steve Finer
Treasurer

NOTE: The above account is separate and in addition to the SVFD budget within the Town General Fund.

SHERBURNE MEMORIAL LIBRARY

The Library continued to develop the many programs it had initiated in past years.

The core of the library's book collection continued to expand to meet the interests of the community. Thanks to the generous, yearly contribution from Diane and David Rosenblum, we have been able to increase the number of Large Print titles. The audio collection is expanding with titles in the CD format as well as tape.

Computer usage increased over 60% this past year. During the summer months we had our volunteer, Brittany Wonsor, act as computer time keeper to keep things running smoothly. We thank Barry Isaac for conducting beginner computer classes for the community.

The Children's Library Program continued to be very strong. The Summer Children's program "Summer Feast" was a great hit. Over 80 children participated. Parent volunteers helped to make this a special time for the children. Under the direction of Teri Austin, the library continued to offer Mother Goose Story Times for the newborns to 2+ group as well as Once Upon A Time for the Pre-K set. The After School Specials focused on Valentines, Owls, Tracking and A Dr. Seuss Birthday Party. Teri also initiated a Teens' Program. Children and teens continue to drop in after school, averaging about 18 children daily. Finally, the mural painted by Peter Gould in the children's bathroom is a real winner.

Our Director, Gail Weymouth, ran the Adult Programs. The Constitution and the Bill of Rights were the basis for topical readings and lectures for the summer program. Attendance was high; the meeting room was full to capacity. The Library also offered a monthly film series. The Library and the Recreation Department co-sponsored the Summer Concerts. These were made possible using the Freeman Foundation funds.

The Freeman Foundation funds also financed several community-based programs such as Community Conversations and The Community Bridge Project. The latter originated in the minds of Gail Weymouth and Mike Coppinger. This small bridge spans the stream that runs in front of the Library. Ken Keim spearheaded the project, with additional support from Rotary members and the road crew. A plaque dedicating this bridge to George Lyons was put in place this fall.

The first Judy Hansen Building Community Award, which grew out of the Community Conversations, was given to Beverly Anderson. A large group turned out for this presentation and a potluck dinner.

Naturally, The Board and the Library Staff continue to be impressed by the good will of the community. We have collected over \$7000 this past year. The donated card collection has provided us with much of this additional revenue. We are so grateful to the Friends of the Library and our faithful library volunteers, Edie Johnstone, Carol Giordano, Lynn Dentz, Judy Roberts, Betty Peabody, and Timmie Rome, who give of their time and are indispensable. Special mention goes to George Lyons who donated, designed and directed the planting of a memorial grove in honor of his late wife Maureen. Many thanks go to "The Dirty Girls" who keep our library gardens in good shape.

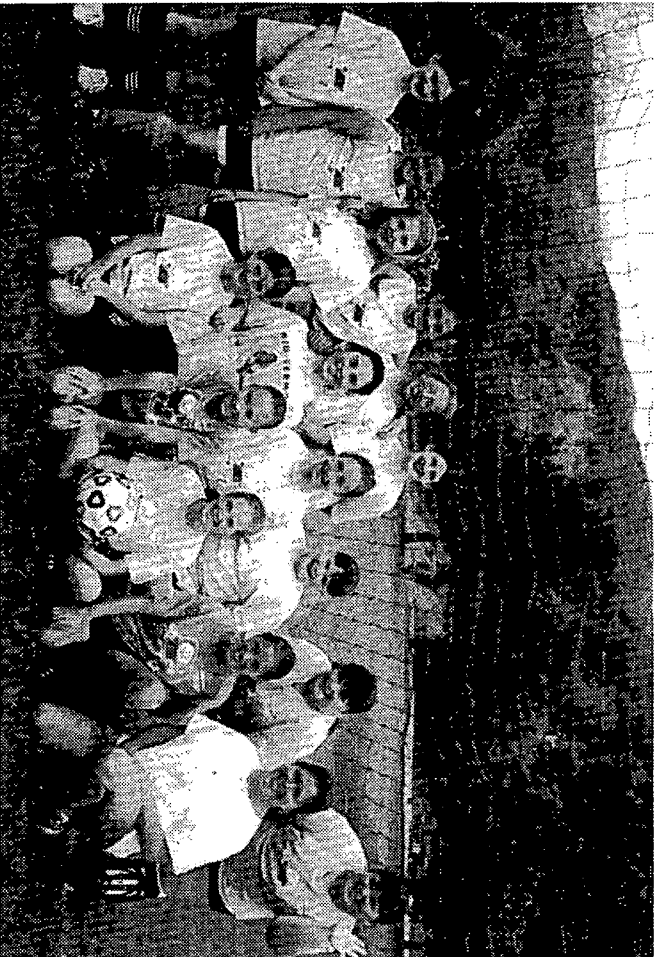
Lastly, we commend our staff. Connie Barbash, assistant librarian, has taken on the additional job of providing all technical services. Our Children's Librarian, Teri Austin was nominated as President of the Children Young Adult Librarians

Committee of the Vermont Library Association. She is a member of the Vt. Dept. Of Libraries Children's Advisory Board. Teri also worked on the VLA Conference Committee. Director Gail Weymouth received the prestigious Sarah C. Hager Award for Librarian of the Year in 2002. In addition to chairing the VLA Intellectual Freedom Committee, Gail was nominated recently to the American Library Association's National Intellectual Freedom Committee.

We congratulate Gail Weymouth our Library Director for 20 years of service! Under her guidance, we moved to a beautiful new facility and were awarded The Vermont Public Library and Freeman foundation grant monies. Under Gail's leadership the staff and volunteers provide the very best service to our patrons. And ever vigilant of the community's financial concerns, Gail and Teri are to be found washing windows, repairing equipment etc. We feel fortunate to have them.

Respectfully submitted,

Timmie Rome
Chairman



GIRLS SPRING SOCCER TEAM

1st row: Carli Lamb, Nicole LeBlond, Sarah Guth, Angela Lucian, Coach Leslie Guth
2nd row: Brittany Whittaker, Karly Acker, Molly Koch, Jennifer Koch, Annie Koch
3rd row: Karlin McCarthy, Jennifer Leggett, Olivia Merrill, Brittany Wonson,
Alessandra Hodulik, Kelsey McCarthy

RECREATION & PARKS DEPARTMENT

2003 marks the year that the Recreation Department completed the final steps to purchase the land behind the Sherburne Memorial Library. The Department was fortunate to receive a grant from the Vermont Housing & Conservation Board which covered $\frac{3}{4}$ of the sale price. The Recreation Commission is looking forward to moving along with the development plans for this property. The opportunity to make this land into usable athletic and opened field space will benefit the Killington community for years to come. I would again like to extend my heartfelt thanks to Ada Hall. Her cooperation and generosity made this acquisition possible.

My thanks go out to the local businesses that have donated money to sponsor some of our youth athletic teams and other projects. These businesses are: ERA Mountain Real Estate, The Swiss Farm Inn and, especially, Mogulis Sports Pub. As a result of the generous donation from Mogulis, the Department was able to purchase a brand-new swing set which was erected this fall at the recreation area. This swing set will get a lot of use throughout the year not only from the Recreation Department summer camps and visitors to the recreation area, but also the Sherburne Nursery School.

This past summer was the second year of the Library/Recreation Department's Summer Concert Series at the Sherburne Memorial Library. The concerts are on Thursday night's from 6pm-8pm. These events are made possible through a collaborative effort. My deep thanks to the Sherburne Memorial Library staff for their help during these shows. Credit for pulling together the necessary funds for making these concerts possible must go to Library Director, Gail Weymouth. Without Gail's dedication and tireless efforts, these great community events would not be possible.

Some highlights at the Recreation Department last year... First, the Recreation Commission, previously a 7 member board, has gone back to the original number of members which is 5. One new program that has grown in popularity with the teenagers in the area is the "Punk in the Peaks Concerts". Another new addition was the creation of a game room downstairs in the recreation office which was enjoyed throughout the summer by day campers. The Sherburne Elementary School 4th, 5th and 6th grade classes have enjoyed the three school dances that the Recreation Department offered throughout the school year. Finally, the Department was fortunate to receive a gift of an electric "GEM" car from Chrysler Motor Corp. This vehicle will be used by the Recreation Department for various tasks ranging from maintenance to transporting campers to summer school at the library.

If you'd like to stay up-to-date on all the programs offered by the Recreation Department, please feel free to browse through our web site. You can find it by going to the town web site at www.killingtontown.com. If at anytime you would like to register for a recreation program but are unable to stop by the office, you can obtain details and download a registration from the website and mail it to the Recreation Department.

Respectfully submitted,

Michael Copinger

SHERBURNE VILLAGE CEMETERY

Balance January 1, 2003

Chittenden Bank Perpetual Care CD Account
Keybank 6-month CD Account
First Vermont Operating Account

\$24,448.65
18,962.86
10,164.96
\$53,576.47

Receipts:

Interest CD accounts
Interest Operating Fund
Town of Killington

1,286.29
111.57
4,000.00

5,397.86
54,860.36

Disbursements:

Repairs/Supplies
Ground/Maintenance
Plot Refund

1,237.02
969.97
325.00

Account Balance December 31, 2003

(2,531.99)
\$56,442.34

December 31 account balance:

Chittenden Bank Perpetual care CD Account
Keybank 9-month CD Account
First Vermont Operating Fund

\$24,926.31
19,782.10
11,733.93
\$56,442.34

The Cemetery Commissioners again take this opportunity to thank the Sherburne Historians for their continued support in beautifying the cemetery entrance. It is certainly appreciated.

Respectfully submitted,

Lynn E. Bates
Truman A. Bates
Louis W. Grob
Cemetery Commissioners

PLANNING COMMISSION

The Planning Commission met 14 times in 2003 and held 16 public hearings for various development projects.

A petition was presented to the Commission requesting that the Business District, located along the lower portion of Killington Road, be changed to a Commercial District. The Commission held a public hearing at which several residents expressed both support and concern over the proposed changes. Because the change was supported by a petition, the Commission could make only technical changes and passed it along to the Selectboard. The Selectboard tabled the petition with a request to the Commission to fully study the issues raised.

The Commission is set this year to discuss changes to the zoning regulations that would include changes to the Business District. Even though it is not anticipated that the Business District would become a Commercial District, there is discussion to increase the number of allowed uses. In addition to zoning changes, the Town Plan is due for the five-year update. The Commission will update the Town Plan and hold public hearings to discuss proposed changes to the Plan.

Some of the issues the Commission hopes to address with the zoning changes are the inevitable conflicts between commercial uses and residential uses. As the number and intensity of both commercial and residential uses increase, the buffers of natural plantings and open space between uses are reduced, leading to increased conflict among various uses. The Commission will also encourage clustered development and increased use of the walkway. As the zoning and town plan changes are developed, the Commission will hold public hearings to gather input from town residents, businesses and other concerned persons.

The Commission would like to welcome Ken Austin and Howard Barbash as the newest members to the Planning Commission.

The Commission generally meets on the second and fourth Wednesdays of each month at 7:30 p.m. at the Town Office building on River Road. As always, the public is encouraged to attend and participate in these meetings.

Respectfully submitted,

Ted Olencki
Chairman

2003 ZONING ACTIVITY

ZONING PERMITS ISSUED:

New One and Two Family	18
Residential - additions/alterations	26
Commercial - additions/alterations	12
Signs	24
Tents	13
Subdivisions	10
Garages/sheds	14
Other	1

ZONING BOARD OF ADJUSTMENT: files opened 1

PLANNING COMMISSION: Site Plan Reviews 7
 Minor Status Reviews 4
 PUD 3

TOTAL FILES 133

Zoning Permit, Site Plan and PUD review applications and Commission and Board minutes are available on the Town Web page: www.killingtontown.com

Respectfully submitted,

Richard L. Horner
 Zoning Administrator

TRUSTEES OF PUBLIC FUNDS MAXHAM FUND

Balance January 1, 2003	\$831.86
Interest Earned	3.21
Balance December 31, 2003	<u>\$835.07</u>

Respectfully submitted,

George J. Krantz
 Howard Zack
 Truman Bates
 TRUSTEES

This fund of \$400 for the benefit of schools was established in 1908. \$300 came from the sale of the original Right 66 set aside for schools located near the West Bridgewater Cemetery. \$100 was a gift of Mr. Maxham, probably between 1841 and 1864. A description of the land is given in Book 11, page 739, in a mortgage given by Daniel W. Taylor March 27, 1883. It was on a 180-acre property on Shaw Hill.

TOWN CLERK'S REPORTS

LIQUOR LICENSE REPORT

45	First Class Licenses at \$95.00	\$4,275.00
21	Cabaret Licenses at \$95.00	1,995.00
10	Second Class Licenses at \$45.00	450.00
	Total	<u>\$6,720.00</u>

DOG LICENSE REPORT

56	spayed/neutered dogs at \$5.00	\$ 280.00
8	not spayed/neutered at \$9.00	72.00
75	late spayed/neutered at \$7.00	525.00
15	late not spayed/neutered at \$13.00	195.00
154	licenses	<u>\$1,072.00</u>
	Town Clerk: 154 licenses x \$2.00	(308.00)
	Vermont rabies control program:	
	154 licenses x \$1.00	<u>(154.00)</u>
	Total	<u>\$ 610.00</u>

MARRIAGES

January 16 Herbert William HARTMAN, Jr. and Izabela GIERACH, both of Merion Station, Pennsylvania

2003 VITAL STATISTICS

February 1 Phillip Brent TURNER and Susan Marie TOMANIO, both of Ridgefield, Connecticut

February 6 Brian Anthony WASICKI and Elaine Catherine PURDAY, both of Stamford, Connecticut

February 14 Christopher Maurice COOPER and Antonia Helen DEELEY, both of Doncaster, England

February 22 Gregory Antoni WASOKA and Heather Amber PIERCE, both of Naugatuck, Connecticut

March 8 Michael Edward WHITE and Elizabeth Ann HIRTH, both of Butler, New Jersey

March 9 Alexandre Rodrigues GUMARAES and Susan Delores POOLER, both of Leominster, Massachusetts

March 17 James Thaddeus DOYLE and Christine TARDIBUONO, both of Bronx, New York

March 29 David Wayne TAYLOR and Melissa Rose MALAVENDA, both of New Fairfield, Connecticut

April 14 Andrew James GORDON of Killington, Vermont and Katherine DAVISON of Wyeleaf, Surrey, UK

May 9	James Thomas LeSAGE and Kathleen Marie CULLINS, both of Killington, Vermont
May 10	Polydore Joseph AUBIN and Sharon Jeanne FARBER, both of Putnam, Connecticut
May 24	John Matthew SASSATELLI and Jeanette Paula PREMO, both of St. Paul, Minnesota
May 25	James Francis BRENNAN and Brenda Jean WELCH, both of South Boston, Massachusetts
May 25	Martin John HANNAN and Valerie REED, both of Killington, Vermont
June 10	Ioan David Joseph SAID of Lapraire, Canada and Nicola Jane EDWARDS of Frodsam, Great Britain
June 21	Bryan Robert TOWNSEND and Jane Marie ROBERTSON, both of Charlotte, North Carolina
June 21	Andrew David MILLER and Donna Marie CHURCH, both of Emeryville, California
June 28	Matthew William RHOADES and Melinda Sue JONES, both of Somerville, Massachusetts
July 5	Christopher Louis GROB and Sara YOUNG, Both of Winchester, Virginia
July 12	Cory Lee BARTSCH and Patricia Ann SMITH, both of Worcester, Massachusetts
July 12	Jean-Pierre DeFRANCESCO and Kathleen Brook SIAS, both of Killington, Vermont
July 19	Timothy Eric PADGETT of Newton, Massachusetts and Lisa Marie DeSISTO of South Boston, Massachusetts
July 26	Michael David D'ONOFRIO and Kathleen Marie FALLON, both of Rosindale, Massachusetts
August 2	James Patrick HUBER and Heidi Christine WEIERSTALL, both of Hoboken, New Jersey
August 2	Thomas Eric HIGGINBOTHAM and Rachel Elisabeth MIKSAD, both of Arlington, Massachusetts
August 9	Brian Eugene MCKAHAN and Christina Mary BRASDA, both of Grayslake, Illinois

- August 16 Joseph Gerard LOBUONO, Jr. of Everett, Massachusetts and Kaite Ellen PATTERSON of Watertown, Massachusetts
- August 16 Gordon Manuel GOES and Sammi Kae JOHNSON, both of Killington, Vermont
- August 30 Michael Elliot SLADE of Quincy, Massachusetts and Kim Lee VIERA of South Dartmouth, Massachusetts
- September 17 Wilfred Thomas BIGL of Tolland, Connecticut and Judith Ann DUBEK of Manchester, Connecticut
- September 20 Brian Paul STEELE of Fayetteville, North Carolina and Nakari Marina GARCIA of Charlotte, North Carolina
- September 27 James Patrick CORBETT and Meaghan Lawless O'BRIEN, both of Montague, Massachusetts
- September 27 Dean Scott DICKINSON of Tolland, Connecticut and Jennifer Elizabeth DISABELLA of New Britain, Connecticut
- October 4 Steven Eric JOHNSON and Nancy Josephine SCHMID, both of New York City, New York
- October 10 Chad Jason CONTALDI and Mary Catherine PEARSALL, both of Lempster, California
- October 10 Kris James KAMPS and Teresa Ellen CROUSE, both of Tallmadge, Ohio
- October 14 Jonathan Paul YOUNG of Deerfield, New Hampshire and Tara Marie McCUE of Concord, New Hampshire
- October 18 Paul Dominic VETRO of Branford, Connecticut and Christina A. MURATTI of New Haven, Connecticut
- October 25 Kevin Kincaid MERRILL and Patricia MURRAY, both of Killington, Vermont
- October 25 Scott Orville ADAMS of Stamford, Connecticut and Shakila ABDOL of Bronx, New York
- November 10 Tyler John BURKE of Killington, Vermont and Desire' Lynn HOMMEL of Stockbridge, Vermont
- December 6 Roger I. NEIL, Jr. and Michelle A. DeCOTA, both of Killington, Vermont

CIVIL UNIONS

May 22 Valeria Ann ADKINS and Melissa Irene TAYLOR, both of Princess Anne, Maryland

- May 23 Patrick Angel PERALTA and Adam Henry LEEDS, both of Silver Spring, Maryland
- June 7 Misty Kay ROCKWOOD and Teri Lee REYBURN, both of Geary, Oklahoma
- June 13 Paul Aaron MOSS and Craig Robert MILLER, both of White Bear Lake, Minnesota
- August 1 Debra J. KRUSE and Robin J. BLUMENTHAL, both of Berea, Ohio
- September 6 Marcy J. BALUNAS and Kimberly Christine DIVER, both of Oak Park, Illinois
- September 6 William Carl JOHNSON and Paul Bernard L'ABBE, both of Killington, Vermont
- September 13 Richard Vincent WERNER and Paul Andrews BARUNAS, both of New Hope, Pennsylvania
- September 24 Dana Lyn MARTIN and Tammy Jean TITTLE, both of Guthrie, Oklahoma
- October 17 Wanda Marie STEINER and Dawn Marie GWYN, both of Akron, Ohio
- November 5 Warren Francis GOFF and Mark Edward SCHIFFMAN, both of Provincetown, Massachusetts
- November 21 Ursula Savaughn BATTLES and Alnisa COBB, both of Newark, New Jersey

BIRTHS May 22

- June 18 Devin Claytin DUPUIS, son of Teresa Marie (Dean) Felix and Ronald Patrick Roland Dupuis
- June 18 Maeve Keenan HAFF, daughter of Mary Ellen Keenan-Haff and James Herbert Haff
- September 15 Evan Daniel JOAQUIN, son of Danyelle Louise Ryan and Paul Daniel Joaquin

The following births were inadvertently omitted from the 2002 Annual Report:

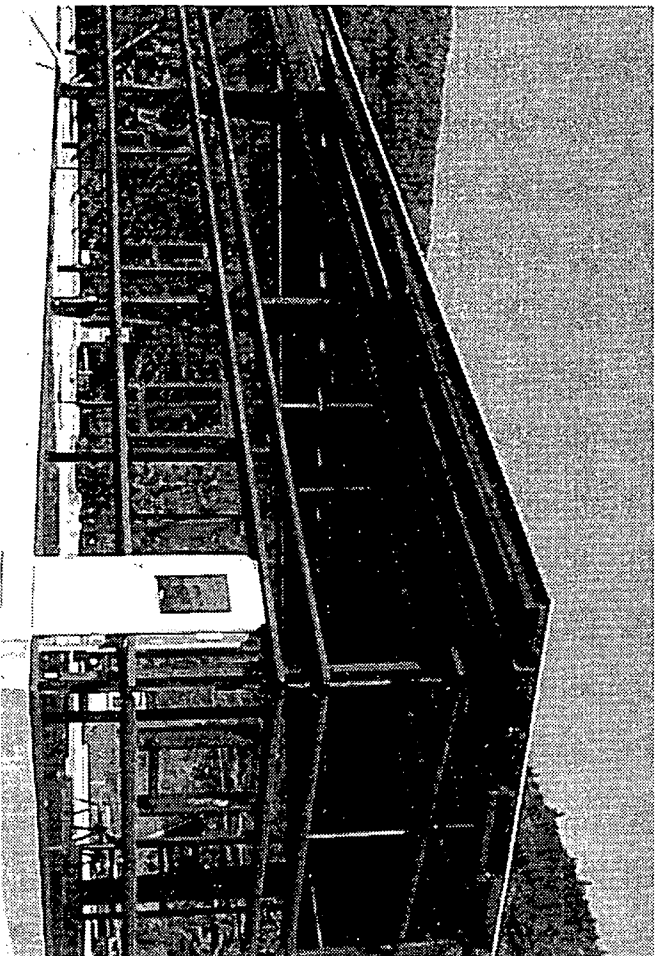
- February 25, 2002 Sophia Anna JOHNSTON, daughter of Sarah Ann (Deering) and Joseph Gordon Johnston
- April 25, 2002 Lily Zade HOLDING, daughter of Jane Helen Aiken and John Edward Holding

DEATHS

January 3	Maureen Lyons, born October 2, 1926
January 19	John R. Poland, born September 23, 1935
April 3	Elizabeth Merrill, born December 3, 1931
May 12	Ada V. Bishop, born February 19, 1908
May 19	Florence T. Hall, born March 12, 1915
May 23	Faustina Romanini, born June 10, 1909
October 3	Edgar John Staples, born June 5, 1930

Respectfully submitted,

Lucrecia Wonsor
Town Clerk



NEW TOWN GARAGE FRAME

GREEN MOUNTAIN NATIONAL GOLF COURSE

For the second consecutive year, Green Mountain National struggled through a sub-par summer financially. Greens Fee revenues were 7% lower than in 2002 and 12% off our peak in 2001. Due to this reduced play, other income sources such as carts, pro shop and restaurant revenues also declined, resulting in a larger than expected year-end shortfall. The Golf Accounts were projected to end the year with a deficit, but the -\$122,285.39 was about \$65,000 more than anticipated. While this amount of deficit on a \$1.5M annual budget is not overwhelming, next year could see this almost triple if revenues don't improve dramatically. **Article 9** of the Town Meeting Warming requests authority to borrow money to cover these deficits.

The Board of Selectmen together with Head Pro Jeff Hadley and Superintendent Peter Bissell have embarked on a plan to turn around the golf course fortunes to avoid more drastic measures in the future if revenues don't improve. We hope these efforts coupled with an improving regional and national economy will encourage more visitations to Green Mountain National Golf Course this summer.

On the positive side, once again Peter Bissell and his crew have done a marvelous job keeping the course in tip-top shape throughout difficult weather conditions. Jeff Hadley and Food and Beverage Manager Roger Stevens and their staffs continue to provide customers with a quality experience.

Respectfully submitted,

David W. Lewis
Town Manager

Check out the Green Mountain National Golf Course web site at
www.greenmountainnational.com

GREEN MOUNTAIN NATIONAL GOLF COURSE

O&M BUDGET BREAKDOWN

	2003 <u>ACTUAL</u>	2004 <u>BUDGET</u>
REVENUES		
Greens Fee Revenue	\$ 608,308.45	\$ 688,500
Cart Fee Revenue	225,354.38	252,000
Season Pass Revenue	89,200.00	94,800
Pro Shop Revenue	94,373.92	110,000
Restaurant Revenue	150,827.51	155,000
Golf School/Lessons	10,230.12	10,500
Practice Range Revenue	38,750.64	40,000
Town General Fund Debt Payment	82,000.00	82,000
Club Rentals & Miscellaneous Revenue	4,791.80	5,000
Sales Tax Collected	15,940.51	21,480
TOTAL REVENUES	\$1,319,777.33	\$1,459,280
EXPENSES		
Golf Course Maintenance		
Personnel	\$ 213,034.50	\$228,500
Operating Expenses	19,484.17	25,000
Pesticides, Fertilizer, Sand, etc.	47,085.31	63,000
Maintenance Buildings & Equipment	47,184.62	56,300
Operations Expense		
Personnel	114,948.90	122,375
Operating Supplies	38,264.41	43,500
Clubhouse Building	18,030.41	19,000
Marketing Expense	23,422.28	25,000
Cost of Goods/Pro Shop	64,418.67	82,500
Sales Tax to State of Vermont	16,047.98	21,480
Restaurant Expense	126,598.08	126,400
Employee Benefits	84,636.69	89,902
Course/Clubhouse Improvements	5,314.45	12,000
Equipment Replacement Fund	41,488.00	55,000
Golf Cart Lease	45,990.00	46,000
Golf Course Debt Service	601,228.18	625,792
TOTAL EXPENSES	\$1,507,176.65	\$1,641,749
NET REVENUES	(\$187,399.32)	(\$182,469)
Golf Accounts Beginning Balance	<u>\$65,113.93</u>	<u>(\$122,286)</u>
Golf Accounts Ending Balance	(\$122,285.39)	(\$304,755)

Note: For Related Golf Accounting see pages 8 & 10

TREASURER'S REPORTS

YEAR ENDED DECEMBER 31, 2003

GOLF PRO SHOP ACCOUNT

Beginning Balance January 1, 2003		\$ 64,863.93
Receipts		989,263.08
SGSC Loan Repayment		8,000.00
Interest Earned		<u>1,961.80</u>
		1,064,088.81
Disbursements		
Transfer to General Fund	1,035,736.25	
Loan to SGSC	8,000.00	
Credit Card fees & discounts	12,021.42	
Charges (deposit books)	<u>45.50</u>	
		(1,055,803.17)
		<u>\$ 8,285.64</u>

Balance December 31, 2003

SHERBURNE GOLF SERVICE COMPANY/RESTAURANT

Beginning Balance January 1, 2003		\$ 250.00
Loan from Golf Pro Shop Account		8,000.00
Receipts		148,695.04
Interest Earned		<u>177.65</u>
		157,122.69
Disbursements	79,206.06	
Loan Repayment	8,000.00	
Credit Card fees & discounts	512.00	
Transfer to General Fund	<u>69,154.63</u>	
		(156,872.69)
		<u>\$ 250.00</u>

Balance December 31, 2003

Respectfully submitted,

Patricia A. Keim
Treasurer

NEW KILLINGTON TOWN GARAGE

		2003-2004	2003
		PROPOSED BUDGET	ACTUAL
Permits, Legal	\$ 2,550.00	\$ 2,550.00	
Town Engineer fees	11,500.00	10,770.36	
Construction & Design			
Base Design Contract - (Russell)	15,935.00	15,935.00	
Base Construction Contract - (Belden)	769,044.00	730,994.85	
Alternates:			
Personnel Door Canopies (2)	4,000.00	0.00	
Well Pump & Water System	7,000.00	6,992.00	
Trucking & Gravel Deducts (G. F. Exp.)	(6,636.00)	(6,636.00)	
Asphalt Credit	(1,425.00)	(1,425.00)	
Electrical & Other Minor Change Orders	1,000.00	0.00	
Town Construction Costs			
Container Rental & other temp. expenses	3,500.00	3,121.55	
Truck Lift	41,000.00	39,252.52	
Compressors (2)	4,000.00	3,660.00	
Grease/Oil/Air Hose & Reel System	5,500.00	4,968.23	
Pressure Washer	4,000.00	3,695.00	
New Well & Temporary Water	7,600.00	7,599.82	
Gravel, Culverts, Fence, Guard Rail, Paving	35,000.00	23,534.89	
Landscaping (topsoil, seed, mulch)	3,000.00	2,678.00	
Furniture & Equipment	15,500.00	3,740.49	
Miscellaneous Revenues	(350.00)	(350.00)	
Contingency	1,323.04	0.00	
TOTAL EXPENSES	<u>\$923,041.04</u>	<u>\$851,081.71</u>	
REVENUES TO PAY TOTAL BUDGET AMOUNT			
Madden House Sale Net Revenues	\$130,697.61	\$130,697.61	
General Fund 2003 Appropriation	35,000.00	35,000.00	
General Fund Restricted Fund	147,343.43	75,384.10	
Vermont Bond Bank (\$685,000 max.)	<u>610,000.00</u>	<u>610,000.00</u>	
TOTAL REVENUES	<u>\$923,041.04</u>	<u>\$851,081.71</u>	

INVENTORY OF TOWN EQUIPMENT & FIXED ASSETS

OFFICE EQUIPMENT

Fireproof File Cabinet
IBM Wheelwriter 6 - 2; Calculators - 2
Work Desks - 6; Tables - 10
Office Chairs - 22; File Cabinets - 18
Samsung Telephone System
Canon FAX-1/700
Altos 930 Computer Server
Altos Personal Computer System- 6
Okidata Printers w/stand - 3
Pool Laptop Computer
Epson 1520C Color Printer
Computer Work Centers - 4
Optech IIPE Voiting Machine
Land Record Book Shelves
Recorded Map Cabinets
6-stall Voiting Booths
Air Conditioner System
Refrigerator & Microwave Oven
Chairs, Tables, Cabinets

REAL ESTATE

Town Office
Town Garage - 8 bays; Addition - 3 bays
Salt & Calcium Chloride Building
Recreation Area & Land behind Library
Library
Recreation Department Office Building
Winter Sand Storage Area
Solid Waste Transfer Station
Welcome to Killington Region Sign Site
Parcel 23-37 Mill Lot Route 4

LAW ENFORCEMENT

Kustom Moving Radar - 2
Decatur Radar - 1
Motorola Mobile Radios - 4
Portable Radios - 4
Mobile Video Cameras - 2
Strobe Light - 2
Alcosensor - 3; Electronic Sirens - 2
File Cabinet
Guns and Holsters - 3
Safariland Armour Vests - 3

PUBLIC WORKS

1996 Caterpillar 143H Grader
1998 Mack RD690P Dump Truck
1999 John Deere 544H Loader
1999 John Deere 6310 Tractor
1999 Mack RD690P Dump Truck
2000 Mack RD690P Dump Truck
2000 Dodge 3500 4WD 1 Ton Truck
2001 Mack RD690P Dump Truck
2001 Toyota 4WD Highlander
2001 Caterpillar 248 Skid Steer (lease)
snowblower, reversible plow bucket
2002 Mack RD690P Dump Truck
2002 Dodge 3500 4WD 1 Ton Truck
2003 John Deere 410G Backhoe
2004 International 7600 Dump Truck
Hydraulic Tailgate Sanders - 7
Reversible Plows - 6
Wing Plows - 5; Pick-up Plows - 2
Mobile Town Radio Network
Valby CH-231HF Wood Chipper
Tiger TRB-60C Mower
Sweepster AH-H Power Broom
Chainsaws - 2; Power Pruner
Karcher HDS 1000 Pressure Washer
PowerMaster Pressure Washer
Air Compressors - 3
Vibrating Plate Compactors - 2
Millermatic 251 Welder
Lincoln Air Lube Assemblies - 2
York Rakes - 2
Calcium Chloride Spreader
Clemco Sand Blaster
Mohawk Truck Lift
Recycling Containers - 2
Traffic Control Signals - 3

RECREATION AREA
Bath House with Pool Heater
Swimming Pool & Winter Cover
Baseball/Soccer Fields
Playground Climbing Equipment
Spring Toys & Play Digger
Horsehoe Pits - 2; Swing Set
Picnic Shelter Area
Picnic Tables- 11; Grills - 4
Tennis Courts - 3; Basketball Court

Baseball Bating Cage
Pitching Machine
Youth Soccer Goals
Toro #325D Mower
Self-propelled walk-behind lawn mower
Bicycle Rack; Benches
Air Hockey, Foosball, Ping-pong tables
2002 Chrysler GEM Electric Car
Office Refrigerator & Microwave Oven
Fax Machine

LIBRARY FURNITURE

Regs chairs - 10
Tempus arm chairs - 14
Tempus tables - 3; Side tables - 4
Reader's Roost; Beckwith Piano
Children's display table
Task chairs - 16; Guest chairs - 12
Adirondack chairs - 4
File cabinets - 5; Desks - 3
Stacking chairs - 58; 2 Chair caddies
Folding tables - 10; Shelving
Depressible Book Return Cart
Exterior Book return

LIBRARY EQUIPMENT

GBC Laminator; GBC Shredder
Brother Word Processor
Minoita Copier, Brother FAX
Okidata laser printer
BJ220 color ink jet printer
HP 550C deskjet printer
HP Color Laserjet 4600
Acer Altos 930 Server
6 PC Work Stations
Gateway Pentium 4 Computers - 4
Canon Imagerunner copier
1 pb spinner
Cannon A20 Digital Camera
HP Scanjet 7400C
IBM PC300GL
16-port hubs - 4
Acer P4 Multimedia Computers - 2
Dell Latitude Notebook C810
Epson receipt printer
Worthington Bar code wands - 5
Zenith TV, VCR & AV Cart
Sony DVD Player, InFocus Projector
Microwave/convection oven
Hot Point refrigerator
Bicycle rack
Footbridge

GOLF COURSE

234 Acre property
Clubhouse & Maintenance Buildings
Golf Lift

Chemical/Pesticide, Pumphouse & Range
Buildings

3-Bay Pole Barn & Waspad Structure
Barrows House (Hole #3)
1993 Ford F350 4WD Dump Truck
1995 Ford #2120 Backhoe/Loader
1999 Ford 1920 Loader/Tractor
2000 Toyota Tundra 4WD Pickup
Rainbird Maxi 5 Irrigation System
2001 Toro #3100 Greensmowers - 2
2001 Jacobsen Walking Greensmowers-6
2001 Toro #5500-D Fairway Mower
2002 Toro #5400D Fairway Mower
2002 Toro #5020 Sand Pro
2003 Jacobsen AR2500 Rough Mower
2003 National 8400 Rough Mowers - 2
Toro #3500D Rough Mower
Turco Sod Cutter & Edge-R-Rite
Toro Walking Greensmowers - 2
Jacobsen T422D 4WD Mower
Mower Trailers - 8
Giant-VAC Blowers - 2
Jacobsen B-40 Blower
Fairway 5-Gang Unit
Jacobsen 548-100 Overseeder
Jacobsen 810 Utility Truck
Yamaha Utility Carts - 3
EZ Go 1200 (2) & ST350 (1) Utility Vels.
1996 Cushman 4-wheel Trucksters - 3
1999 Club Car Turf II Utility Car
Green Care Core Master 12 Aerifier
Ryan GA-24 Greens & Fairway Aerators
Ryan Mat-A-Way Overseeder
Vicon & Lely Fertilizer Spreaders
Hollrock B-8 Ball Dispenser
Hollrock QP9E Ball Picker
Smithco Sprayers - 2
Allen Flymowers - 2
Neary 300 Back Lappers - 2
Grinders - 3
Aerway Fairway Aerator
Altos 330 Server & Computer System-4
Ice-O-Matic EUC-200 Icemaker
Restaurant Kitchen Equipment
J.C. Video System
Arrens Snowblower

GENERAL FUND

FIVE YEAR COMPARISONS

	<u>2003</u>	<u>2002</u>	<u>2001</u>	<u>2000</u>	<u>1999</u>
Total Tax Rate	1.362	1.398	1.477	1.476	1.25
Municipal Grand List	6,035,273	5,750,243	4,946,044	4,703,709	4,633,526
Total Taxes Billed	\$8,135,723	\$7,956,021	\$7,228,610	\$6,860,923	\$5,746,471
<u>INCOME</u>					
Actual Tax Income	\$7,915,180	\$7,736,670	\$6,998,504	\$6,626,708	\$5,552,402
Old Delinquent Taxes	221,262	245,598	211,269	195,404	142,116
Gifts/Contributions	86,892	79,156	88,520	74,591	76,343
State Aid - Highways	78,194	74,614	77,636	73,977	84,029
Fed. & State Land Payments	74,317	72,667	69,854	64,228	78,970
Town Clerk Fees	97,455	64,419	50,703	47,086	42,785
Interest Income	42,943	53,765	164,525	128,979	72,522
Recreation Revenue	51,036	61,330	53,066	44,904	35,770
Solid Waste User Fees	35,572	32,726	30,301	33,174	31,571
Due from Other Town Accounts	130,821	0	0	0	0
Short Term Borrowing	100,000	50,000	0	0	0
<u>EXPENDITURES</u>					
Town General Fund	2,379,997	2,378,579	2,442,428	2,325,440	2,212,622
Direct School Payments	1,032,571	1,027,233	1,027,256	1,011,804	995,613
State of VT School Taxes	5,253,677	5,125,693	4,489,652	4,153,644	3,258,073
Short Term Loan Repayments	100,000	50,000	0	0	0
Year-End Change	+52,854	+20,719	-169,112	-164,750	-294,629
Balance December 31	\$369,739	\$316,885	\$296,166	\$465,278	\$630,028

COMMUNITY AND COUNTY REPORTS

FIRE WARDEN

The 2003 fire season proved to be a wet one keeping fire occurrence low. As usual, the majority of fires in Vermont occurred during the spring while we were busy monitoring fuel conditions, the weather, and issuing permits. After green-up in May, plenty of rain kept fuels (i.e., trees, grasses, brush, etc.) wet for the rest of the season in most parts of the state.

The State of Vermont received 101 reports of fires that burned nearly 100 acres this year. Thank you for your vigilance. Once again there were no fires in Killington this year.

For your information we thought you might be interested in the following 2003 chart that lists the number of fires and acres burned by their cause.

# of human caused fires	100.00
# of lightning caused fires	1.00
# of acres burned caused by human	92.70
# of acres burned caused by lightning	3.00
Total # of fires	101.00
Total # of acres burned	95.70
10 year total average # of fires	142.00
10 year total average # of acres burned	243.00

Patrick McDonnell has taken his dad's place as Assistant Fire Warden in Killington. We would like to thank Terry McDonnell for his many years of service. Patrick and I would also like to thank everyone for calling to request burning permits. But remember please to call for burning permits year round and burn only untreated wood in a safe area. Remember that even though you have a permit, you are responsible for your fire.

Respectfully submitted,

David Gouchberg, 422-3760
Patrick McDonnell, 422-3879, 353-0083

FRIENDS OF THE SHERBURNE MEMORIAL LIBRARY

The Sherburne Friends of the Library has continued to fulfill its mission to assist the Sherburne Memorial Library by providing funds for unbudgeted programs. This past year The Friends fund raising activities included a rummage sale (which was organized by Jim and Mareem Stein, whom we dearly miss), three book sales, an American Girl Doll raffle and contributions from our members.

We are proud to have sponsored the Children's Summer Feast-2003 entitled "A Book for Every Taste" which included a delightful performance by Gary Rosen. In conjunction with the Killington Arts Guild, the Friends brought storyteller Michael Caduto to present "Story and Song for Environmental Awareness and Cultural Appreciation." Along with the Library and the Vermont Council on the Humanities, the Friends sponsored "Dorothy Canfield Fisher: A Vermontor for the World," a living history presentation by Helene Lang.

Although active Friends are only a small group, we are essential as a support for our library. We enthusiastically welcome new members to participate in our activities and greatly appreciate all those who contribute to our cause by providing funds through annual membership.

Once again, the Friends would like to take this opportunity to remind the residents of Killington of the invaluable resources the Sherburne Memorial Library provides to us under the responsible and dedicated stewardship of its managing staff. In this time of heightened awareness of the town's operating budget we ask you to share the vision of keeping the library the "living room of the community" by becoming a member of the Sherburne Friends of the Library.

Respectfully submitted,

Kathleen Hubbard
President

KILLINGTON ARTS GUILD

The Killington Arts Guild was founded with the purpose of developing awareness that the Arts are present and enrich every moment of our daily lives.

General meetings are held monthly from April to December at the Sherburne Memorial Library. Topics include music, writing, poetry, painting, photography, physical expression and gardening.

The Guild holds workshops for artists and craftsmen who bring work in progress and share guidance and instruction as well as workshops on poetry and art. Exhibits have been provided for local lodges, as well as various community events.

A calendar and news letter are sent to members and others to inform them of opportunities and activities in which they may participate, as well as notices in the local newspapers .

Membership is open to art supporters and artists and craftsmen of every variety and everyone is invited to attend our workshops and meetings. All events are offered without charge as a public service; however, there is a minimal fee for some special workshops.

The Killington Arts Guild is incorporated as a non-profit (501-C3) organization for cultural, educational, literary, civic and social purposes.

Respectfully submitted,

Ann Wallen, President
Alice Sciore, Vice President
Betty Little, Secretary
Marianne McGee, Treasurer

Directors at Large: Maurie Harrington, Mildred Seeley, Jerry LeBlond, Marilyn Copson, Sally Curtis, Pat Cushing, Michael Young

SHERBURNE HISTORIANS

Dear Killington Residents:

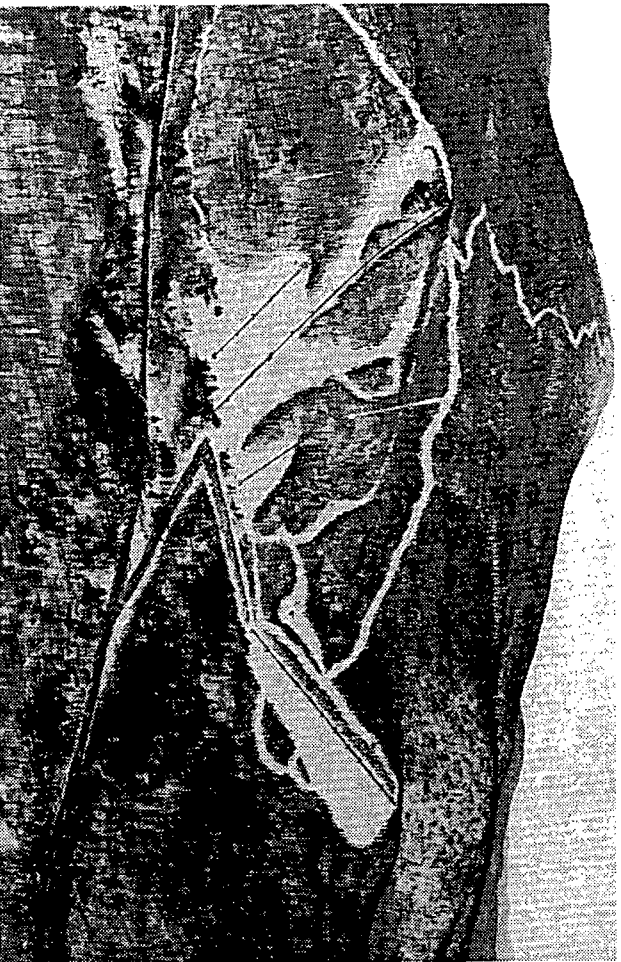
The Sherburne Historians' mission is to preserve the local history of our town. Our main goals are to preserve the artifacts that we currently have, make them more available to the public by way of public display and continue to solicit donations of items with historical importance. Through the years we have collected and acquired numerous artifacts and now we will be able to display a portion of them in the Vermont room and throughout the new library. One of our main long-term goals is to find a suitable place to display and protect the majority of artifacts we have collected and are continuing to acquire.

We hope everyone will come by and visit our display area in the library and if you have any antiques or memorabilia pertaining to Sherburne/Killington that you would like to donate or loan us, we would be honored to have and display it.

Anyone interested in becoming a member please contact me or any member.

Sincerely,

Margaret A. Mowle
President



PICO PEAK — AERIAL VIEW — NORTH
AMERICA'S FIRST ALPINE CHAIR LIFT

RUTLAND MENTAL HEALTH SERVICES

In the year 2003, 27 towns in Rutland County supported the work of Rutland Mental Health Services through town giving. Our agency is committed to providing quality services regardless of an individual's ability to pay. The generous support of towns such as Killington assures that quality services are available for their families, friends and neighbors. Town giving dollars support services which include:

Individual Counseling for Children, Adults and Families
Substance Abuse Treatment Services
Emergency/Crisis Services

During fiscal year 2003, RMHS provided 167 hours of services to 19 Killington area residents. We value our partnership with the Town of Killington in providing these much needed services and thank you for your continued support.

Mark G. Monson
President and Chief Executive Officer

RUTLAND COUNTY WOMEN'S NETWORK AND SHELTER

The Rutland County Women's Network and Shelter is a non-profit agency working within Rutland County to provide safety and support services to victims of domestic violence and sexual assault. We have been in Rutland County for almost 25 years serving men, women, and children who live in danger.

This year the shelter has been constantly busy. In addition to families needing immediate housing for their safety, we have counseling and other support services to well over 2400 people. We assist people with counseling, support group help with relocation, are available on a 24-hour crisis line for domestic violence and rape, assist with family court advocacy, and other services necessary to keep families safe.

The families, volunteers, and staff of the shelter thank the voters of Killington for their continued support of our program. Because of your consistent support we are able to continue to provide a safe haven for those survivors of domestic violence from your Town.

Sincerely,

Rebecca Roguen,
Assistant Director

VISITING NURSE ALLIANCE OF VT & NH HOME CARE, HOSPICE & FAMILY HEALTH SERVICES

The Visiting Nurse Alliance is like the local police and fire departments--a strategic part of the community's safety net--with services that must be continuously available for anyone in need. The need varies dramatically from month to month and year to year. The VNA provides a comprehensive range of care, requisitioned by hospital staff and physicians, for everyone, regardless of ability to pay.

We value the continued partnership with the Town of Killington to help us meet your residents' home care, hospice and family health needs. Town funding accomplishes the following:

- * Enables your family, friends and neighbors to remain independent and at home as they receive skilled clinical services during times of injury, recovery from surgery or accidents, disability, whether for short-term and chronic illness. For many such patients, many are addressing multiple medical, emotional and social issues at the same time.
- * Provides emotional support plus pain and symptom management during terminal illness. Hospice care extends to family members as well. More and more patients want to be at home during their end of life, and through hospice they have that control.
- * Provides community-wellness programs and assistance to young families at risk. Clients range from fathers and/or mothers who want to be more effective parents through learning parenting skills or providing a balanced diet; infants who require hi-tech health care; and children who grow and learn through play groups that offer interaction with other children.

The VNA provided the following services this past year:

	<i>Visits (July 1, 2002, through June 30, 2003)</i>	
Skilled Nursing	64	
Physical Therapy	23	
Occupational Therapy	14	
Medical Social Worker	5	
Home Health Aide	145	
Total Visits	251	
		<i>Hospice VNH</i>
		Patient/Families served 1

On behalf of the people we serve in your community, thanks for your continued confidence.

Respectfully submitted,
Susan H. Larnan, BSN, MBA
President and Chief Executive Officer

RUTLAND REGIONAL PLANNING COMMISSION

The Commission's Mission is "*To provide leadership and technical expertise to encourage cooperative planning with and among the region's communities and area wide interests; and, strive to improve the quality of life for people in the region by promoting harmony among sustainable economic development, environmental interests and other planning issues.*"

In pursuit of its Mission, the RRPC continued to work closely with the region's 27 communities on a wide range of projects:

- Continued the RRPC's very successful **cooperative purchasing program** with municipal and non-profit entities in towns, saving Killington substantial amounts on its diesel and gasoline purchases.
- Used **GIS [Geographic Information System]** tools to work on transportation, watershed planning, and emergency management initiatives. Also continued involvement of GIS in planning projects, the RRPC intern program, and community training.
- Provided **technical assistance** on community development issues—including assisting in the update and implementation of town plans, zoning and subdivision regulations, telecommunications ordinances in virtually every member community.

For the sixteenth consecutive year, dues will remain at \$500. All communities are voting members of the Commission regardless of whether or not they pay dues. Dues paying members receive discounted technical services and are able to participate in the cooperative fuel purchasing program.

REGIONAL AMBULANCE SERVICE, INC.

We are pleased to present our 20th annual report to the citizens we serve. Regional Ambulance Service, Inc., (RAS) has continually provided emergency and non-emergency ambulance service for 20 years. This past year, ending June 30, 2003, the service responded to a total of 6,754 ambulance calls in our 12 communities and an additional 1,875 "Medic One" paramedic intercept calls.

In February 2003 a fire destroyed one ambulance, damaged our remaining vehicles and caused extensive damage to our facilities. Our staff has done an outstanding job coping with the situation and continue to provide the excellent service that our communities deserve. We would like to thank the Rutland City Fire Department for their outstanding response and quick suppression of a fire that could have been even more devastating. Although the fire severely damaged our facilities, our employees pulled together and put us back into service in three and one half hours. At the end of the fiscal year we were still undergoing repairs to our building. Our insurance covered the cost of repairs to our vehicles and building

With the continued support of the citizens, our employees and community governing bodies, we have been able to level fund or lower our assessment rate for the past 19 years. Our current assessment rate is \$4.25 per capita and remains unchanged for the next fiscal year. The public support of our Membership program, direct donations, memorials and estate gifts has been vital to our continued success.

This past year a new ambulance was put into service to replace an older one with over 100,000 miles of service on it. The garage was remodeled to accommodate the 6th ambulance that had been put into service due to the increase in call volume.

Our motto "Serving People First with Pride, Proficiency and Professionalism" is demonstrated by our employees' commitment to continuing EMS training. Each year we have special training in Critical Care Paramedicine, Advanced Cardiac Life Support, Basic Life Support, Prehospital Advanced Trauma Life Support, Pediatric Advanced Life Support, Emergency Vehicle Operations, Bloodborn Pathogen and a variety of continuing education programs. Our professional staff is extremely capable and dedicated.

Monthly C.P.R. classes are taught at R.A.S. Last year, through the R.A.S. Training Center, 1,303 people were certified in C.P.R. Tours, lectures, demonstrations, and C.P.R. classes are available for the general public. For information call 773-1746.

The public is encouraged to visit and talk to the employees and administrator at our Stratton Road facility. Please feel free to contact James Finger, Administrator, or your representative, if you have any question concerning the service. We are proud of our accomplishments and look forward to serving you in the future. The Board of Directors, Administration and employees of Regional Ambulance Service, Inc., will continue working to provide the highest quality of emergency ambulance care at the lowest possible cost to all of the citizens we serve.

Sincerely,
Paul Kniig, President
Board of Directors

Peggy Pelleier
Killington Representative

SOUTHWESTERN VT COUNCIL ON AGING

This report provides information about the different ways the Southwestern Vermont Council on Aging helped elders in Killington during the past year. These included:

Senior Meals: The Council provided funding support for meals served to elder residents of Killington. Prepared meals were available for delivery to the homes of older persons in your community who were in need of special meal support. This service, provided through contract, is often referred to as "Meals on Wheels". We also supplied "Blizzard Bags" to Meals on Wheels participants and other isolated elders, provided "shelf-stable" meals for use in a weather related or other emergency situation. Thirty-seven elders participated at one or more of the luncheon sites available in our region, enjoying 563 meals.

Case Management Assistance: Elder residents of your community were served by SVCOA Case Management staff who provided help with applications and problem solving around programs such as Fuel Assistance, SSI, Medicaid, Food Stamps, etc. Case Managers also helped frail elders with long term care needs, helping those who wished to remain independent identify options and connect with the available services and supports.

Other Services: The Council on Aging also made available the following services to help support older persons in your community: 1) Telephone support through our "Senior Helpline" (786-5991 or 1-800-642-5119). This service provided easy phone access to elders, and others in need of information about available services and supports; 2) Health benefit counseling information and form filing assistance through our SHIP Program; 3) Legal service support through a contract with the Vermont Senior Citizens Law Project; 4) Provision of information related to elder issues through the "Elder Connection" column written by Barbara Hanson appearing weekly in the Rutland Herald; 5) Nutrition education and counseling provided by a Registered Dietician who worked on an individual basis with older persons who needed to improve their dietary intake; 6) Senior Companion support on a one on one basis for frail, homebound elders; 7) Elder Care Clinician outreach services to elders struggling with a variety of mental health issues provided through a contract with Rutland Mental Health; 8) Transportation assistance through Elders on the Go and the One-2-One; 9) Community Development assistance, and 10) Caregiver information and support for family members and others who are providing help to elders in need of care.

ARC - RUTLAND AREA Advocacy, Resources & Community

Our mission is to advocate for the rights of individuals and families with developmental disabilities to be regarded as valued citizens with the same entitlements as a non-disabled individual, including the right to lifelong opportunities for personal growth and full participation in the community.

In 2003, we were representative payee for about 65 clients referred to us by Social Security and mental health centers. We assisted these clients in managing within their budget limitations; quite an accomplishment for people living on the limited resources of SS and SSI. We were involved in every operation from payment of bills, rent, etc., to dispensing personal expenses monies on a weekly basis. We negotiated and mediated between landlords, service providers and businesses in cases where a client was unable to resolve an issue independently. The man hours involved in managing one's case averages from several hours monthly to 3-4 hours weekly, dependent on need. As well, we assisted about 12 clients in filling out annual accounting forms for probate court.

Six dances were provided and over the year these events were attended by over 200 people with developmental disabilities, friends and families. There are also ongoing weekly events such as the art class and the music & movement class.

ARC - Rutland Area supports the local Self-Advocacy group for people with developmental disabilities by doing the minutes and preparing the agendas for the group and then helps with facilitating the meeting. The Self-Advocates have currently been trained in a Disability Awareness Training and have presented the training at Rutland High School. They will be going into elementary schools around the county as well. Many citizens are getting to know the self-advocates better through this service and they are gaining valuable public speaking and advocacy skills. This year the self-advocate group also helped out at the annual Green Mountain Self-Advocates' Voices and Choices conference in Killington, by helping people find their way around.

Our Executive Director is a member of the Rutland Family Support Network and is on the Local Standing Committee of Community Access Program. By staying in touch with other state level organizations and working collaboratively with local advocates, families and organizations ARC-Rutland Area stays on top of the services being provided to people with developmental disabilities and has an outlet to advocate for those services that are not being offered.

On behalf of the Board Members, friends, and families, we are grateful for the support and continued assistance from the citizens of Killington. We receive neither state nor federal funding, and our main sources of income continue to be United Way, Rutland City and other towns such as Killington. In 2003 there was a total of 411 residents in Rutland Area who took advantage of all the services we offer. Our 2004 request for funding from Killington is again \$350.

Lisa S. Lynch
Executive Director

RETIRED and SENIOR VOLUNTEER PROGRAM

RSVP is an "Invitation to Serve" program for people of all ages who want to meet community needs through meaningful use of their skills, talents, interests and knowledge in volunteer service to non-profit organizations. Needs are met in critical areas such as human service, health, state and local government, education, literacy, and the arts, just to name a few. RSVP involves individuals in service that matches their personal interests and makes use of their varied life and professional experiences. Through such efforts, RSVP is meeting the needs that strained local budgets cannot afford. RSVP enables seniors to contribute to their communities and feel good about themselves through the rewarding experience of volunteering. Additionally, over the past five years RSVP has implemented new programming to address pressing community needs. These programs include an American Reads program aimed at enhancing literacy among elementary school children, an osteoporosis prevention program, and a program to restore and refurbish donated dolls for needy children.

Locally, **RSVP is the largest program of coordinated volunteer services** serving the people of Rutland County with **700+ volunteers**. From July 1, 2002 through June 30, 2003, volunteers in Rutland County provided **68,870 hours of community service**. The cost benefit to the communities of Rutland County in terms of cost of services provided equals \$1,027,540.

The monies we are requesting this year will be used to help defray costs of providing volunteer placements, support, insurance, transportation, and recognition. RSVP continues to strive to provide needed and supplemental services that enhance the quality of life for citizens of all ages throughout Rutland County.

Currently RSVP volunteers donate their services to over 100 non-profit organizations including, RRMCC, Rutland Area Art Association, Eden Park and Pleasant Manor Nursing Homes, RSVP Goodtime Singers, Meals on Wheels, Sherburne Elementary School, Rutland High School, American Red Cross, Vermont Association for the Blind, Crossroads Arts Council, Godnick Senior Center, American Cancer Society, Art in the Park, United Way of Rutland County, area libraries, and many more.

The volunteer services they provide include knitting and sewing clothes for children, tutoring and mentoring in area schools, mailings, teaching and performing arts and crafts, greeting people, courting at RRMCC and providing information at the front desk, clerical assistance, delivering and preparing meals, mailings, tax counseling, computer instruction, and special projects sponsored by RSVP such as *Rutland County Reads*, *Operation Doll*, and exercise leaders for the *RSVP Bone Builders* osteoporosis prevention program.

On behalf of RSVP I would like to thank the residents of Killington for their support in the continuation of the RSVP program. As financial constraints affect more and more non-profit organizations, the need for volunteers increases. With your help, RSVP will continue to respond to this need.

Sincerely, Nan M. Hart, Director

RUTLAND COUNTY SOLID WASTE DISTRICT

The Rutland County Solid Waste District offers a variety of solid waste, recycling, waste education, household hazardous waste, composting and administrative support programs for our 16 member municipalities. In addition, the District operates a regional drop-off center and transfer station at Gleason Road in Rutland City. District program, facility and rate information is now available on our web site, rcswd.com.

Waste Disposal: During 2003 residents and businesses in our member municipalities disposed of approximately 37,000 tons of municipal solid waste, nearly all of it through the District's master disposal contract with Casella Waste Management. The cost of disposal, handling and transportation from the District Transfer Station on Gleason Road to the landfill was \$68.04 per ton. State taxes, district surcharge and the Rutland City Host Community Fee totaled \$23.97, for a final disposal cost of \$92.01 per ton.

Recycling: The District owns a Material Recovery Facility (MRF) or recycling center off West Street in Rutland City. The MRF accepts 17 recyclable commodities from transfers stations, commercial haulers and large generators for processing and sale for re-use.

Household Hazardous Waste (HHW): RCSWD operates an extensive HHW program for district residents. The program operates year-round from the Gleason Road facility, and scheduled collections at 20 town transfer stations on Saturdays between spring and fall. The HHW program collects and safely disposes of dozens of hazardous, flammable and toxic materials such as anti-freeze, pesticides, used motor oil, asbestos, fluorescent tubes, computers and electronics.

Other Programs: The District also offered other waste management, education and reduction programs, including construction and demolition waste, yard waste, clean wood, food waste and concrete and asphalt "earth materials" recycling. The District is continuing with its "Merry Mulch" program in collecting and processing over 1,200 Christmas trees annually. The District's food waste program is operated in cooperation with the Rutland County Natural Resource Conservation District. Customers include supermarkets, greenhouses, restaurants, and produce distributors. The District also received a grant from the Agency of Natural Resources to offer a "clean sheetrock" waste drywall program for contractors and homeowners.

Planning, Other Improvements: As required by the new state solid waste plan, the District updated its "Implementation Plan," which serves as a business plan for the next five years. This plan was approved by the Board of Supervisors in April and sent to the state for their review. The District is anticipating the State's comments on the plan soon with a revision ready for public review sometime in 2004.

James O'Gorman,
District Manager

RUTLAND REGION TRANSPORTATION COUNCIL

Formed in 1992, the Rutland Region Transportation Council (RRTC) provides a forum for the development of regional planning and transportation projects that may have regional impacts. In addition, it coordinates policies and priorities with the Vermont Agency of Transportation (VAOT) and promotes cooperation on transportation issues in the Rutland region. The Council is the primary method for public involvement in transportation planning. State and federal funds are obtained by the Rutland Regional Planning Commission which provides support for the Council. The Planning Commission also provides planning, administrative, and geographic information system staff.

All municipalities in the Rutland Region are encouraged to be active in the Transportation Council and those with representatives named to the Council may vote on any issues. Municipalities are not obligated to participate in the Council and those that do participate may cease their involvement at any time.

Over the last fiscal year (October 2002-September 2003), the Rutland Region Transportation Council and its staff have been working for improved transportation planning in Rutland County in the following and other ways:

- Continued to assess the Rutland Region's top transportation problems including whether planned projects conform to the Rutland Regional Plan. From a regional perspective, improvements to the Route 7 and 4 corridors are always high priorities.
- Provided comments to the Vermont Agency of Transportation on the development of Vermont's FY 2004 Transportation Capital Budget and Program and the FY 2004-2006 State Transportation Improvement Plan (STIP);
- Continued to assist towns with road network (culvert, bridge and road condition) inventories.
- Continued to address seasonal transportation problems along VT 103, VT 100 and US 4 by working with staff of neighboring Regional Planning Commissions and ski area representatives;
- Distributed reports, bulletins, fliers, and newsletters, and maintained the Council's web page.

In the current federal fiscal year the Rutland Regional Transportation Council is continuing many of these efforts. A stronger focus on access management is expected in the coming year.

Meetings of the RRTC are held once each month, normally on the fourth Thursday, in Rutland. All those with an interest in transportation and related issues are invited to attend. Questions about the Transportation Council may be directed to the following individuals: Susie Leonard or Susan Schreiblemen, Senior Planners (775-0871) or Richard Baker, Chairman (247-6366).

VERMONT COALITION OF MUNICIPALITIES

The organized effort to substantially reform Act 60 and reduce the reliance on the property tax to fund education is not over. Despite the recent enactment of Act 60 reform, we believe the promise of lower education property taxes will be short term.

We contend that in July of 2004, when this new law goes into effect, the property taxes will be a good deal higher than estimated and will continue to rise rapidly over the next two years. When the rising tax impact is felt, the pressure to reform the statewide property tax system will greatly increase.

In a letter to all legislators in May of 2003, we stated the following reasons for our opposition to the changes in the reform legislation because it still retained many of the onerous features that were a part of Act 60 such as:

- Over-dependence on the property tax to fund education;
- Reliance on a flawed property valuation and equalization system;
- Rapidly rising property values, which under the Common Level of Appraisal system, increase tax rates;
- A system based on tax rate instead of tax burden;
- Lack of cost controls over rising education costs; and
- Tax policy inhibiting economic development and job creation.

As noted above, there continue to be serious problems with the state system of financing education. The Coalition intends to continue to be an organized force fighting for property tax relief. In the coming year we also intend to monitor closely the studies on cost containment and grand list issues established by the law.

We will also work through the legislature and the administration to correct the inequities in the education equalization system and the problems caused in the way property values are determined.

VERMONT LEAGUE OF CITIES AND TOWNS

Vermont local government. Most government services used by Vermonters on a daily basis are those provided by its cities and towns. These include highways, police, fire, recreation, sewer and water. Vermont municipal officials are responsible for raising and expending nearly one-half of the non-federal taxes raised in the state.

In large part, volunteer elected and appointed municipal officials lead these governments. VLCT provides the following services to its member cities and towns, to strengthen the ability of these officials to provide quality services at affordable levels of taxation:

- * Advocacy representation before the State Legislature, administration and judiciary, ensuring that municipalities have the resources and authority to serve their citizens. VLCT is a leader in the education finance debate and in securing revenues for town highway and bridge maintenance programs.

- * Training, technical assistance and publications to strengthen the ability of municipal officials to serve their communities. In the past year, we have responded to almost 50,000 telephone calls, 21,200 of them from local officials on the toll-free telephone line available to them. Our Municipal Assistance Center and Group Services staffs provided over 750 workshops and small group training sessions attended by over 4,000 municipal officials and answered over 2,300 legal questions posed by municipal officials. VLCT distributed over 575 copies of local government publications and distributed over 3,200 hard copies or electronic mail versions of VLCT's Weekly Legislative Report to municipal officials each week during the legislative session.

- * Purchasing opportunities to provide needed services at the lowest cost. These include an array of municipal insurance programs, among many others. Examples of how this saves local taxpayers dollars are the securing of municipal employee health insurance and liability coverage for town operations. The VLCT Health Trust represents the most affordable option available to provide health insurance to municipal employees. The value of VLCT PACIF to all our members was made painfully clear last year when the major re-insurer for the largest private sector option available for municipal property and casualty insurance was declared insolvent by the State of Pennsylvania, threatening the payment of claims made under those policies.

All 246 Vermont cities and towns are members of VLCT, along with 140 other municipal entities including villages and fire districts. Membership dues are \$.72 per capita plus a \$250 service fee per year. VLCT maintains its offices in Montpelier and employs 42 staff members. It has an annual operating budget of approximately \$3.0 million.

Individuals interested in finding out more about Vermont League of Cities and Towns, including reviewing its audited financial statements can visit its Web site at www.vlct.org.

VERMONT DEPARTMENT OF HEALTH

The Vermont Department of Health works to protect and promote the health of all citizens. The following are some of the essential services available:

- **Bioterrorism - Emergency Preparedness:**

The Vermont Department of Health is actively working with local, state and federal agencies to assure a rapid and effective response to bioterrorism and other public health threats or emergencies. Local health department response may include: finding and identifying disease early; investigating and source of the disease; providing accurate and timely information to the public and health professionals; and collaborating with other agencies during biological, environmental or weather events. The Rutland District Office has become a contributing member of the Local Emergency Planning Committee for the Rutland Region. In the past year we have established ties with many of the emergency response agencies. We have also provided training to town health officers, worked closely with the Rutland Regional Medical Center to increase active surveillance, and participated with local and statewide partners in a table top exercise on October 3, 2003. This exercise tested our ability to interact correctly in the event of a regional emergency incident.

- **WIC (Special Supplemental Nutrition Program for Women, Infants and Children):**

One of the most effective ways to improve the health of the overall population is to improve nutrition and physical activity. WIC improves the health of pregnant and postpartum women, infants and young children by assuring access to health care, teaching families about good nutritional practices, and providing an individually designed package of nutritious food to eligible individuals. During 2003 29 women, infants and children living in Killington received foods as well as health screening and individualized nutrition education through this program. The average value of foods provided is \$35.00 per person per month.

- **West Nile Virus Surveillance:**

West Nile Virus first appeared in the U.S. in New York City in 1999 and has become well established in the Northeast. Birds, mammals and people can get WNV from the bite of an infected mosquito. The Vermont Departments of Health and Agriculture conduct surveillance for WNV each year from June until cold weather limits mosquito activity in the fall. As of October 21, 2003, 76 birds and three horses have tested positive for WNV. Three human cases of WNV have been confirmed in the state. In Rutland County from June 12 to October 17, 2003, 88 dead birds were reported, 61 were tested, and seven birds were found to be infected with WNV. There were no human or equine cases reported during this same time period for Rutland County.

If you would like more information about these efforts, or if you have a health concern, please call the Rutland District Office at 786-5811. Please visit our website at www.healthvermonters.info for *Healthy Vermonters 2010*, our state's blueprint for improving public health, new releases and other general public health information.

CHATEAUGUAY-NO TOWN CONSERVATION PROJECT

The Chateaugay-No Town (CNT) Conservation Project is a partnership of people representing the Towns of Bridgewater, Barnard, Stockbridge, and Killington, landowners, land trusts, and the Two-Rivers-Ottawaquechee Regional Commission. Organized as a group in 1997, the Project's purpose is to conserve productive forest lands, sustain critical wildlife habitats, and regain recreational opportunities within the 56,000-acre CNT Area. To accomplish this, Project Committee members remained focused on permanent conservation of land by talking with people about the importance of this area for the future generations to use and enjoy as we are now and have in the past.

Through the collaborative efforts of the Vermont Land Trust, The Conservation Fund, Appalachian Trail Conference, other land trusts, and landowners, the Project promotes voluntary conservation of land by limiting development, while keeping land protected for forestry and recreation, now and forever. To do this, our group supports keeping land in the Area in private ownership and use of a legal tool called "conservation easements" which provide the means to ensure that land is protected over time in accordance with landowner desires.

During 2004, the Committee focused its efforts on educating landowners and the general public about the unique character of this largely upland remote area, comprising portions of the four towns participating in the project. Work continued with several landowners to explore long-term conservation options specific to their properties. A Natural Resource Inventory was completed, giving us baseline information on the range of biodiversity existing in the Area. Landowners and parcel databases were updated, additional GIS mapping of the area completed, and bear habitat assessment studies commenced. This information will help all involved in conserving this Area, better understand the importance of retaining it for largely what it is being used for today.

The Committee recognizes that attaining our goals will be slow and take many years to accomplish. I am, however, very pleased to report that support for our efforts remains very strong. Again, I appreciate the involvement of each of the partners and look forward to a successful year in 2004.

For more information on the Project, contact the Two Rivers-Ottawaquechee Regional Commission at 457-3188 or e-mail me at jerry10310@aol.com.

Gerald K. Fredrickson, Chair
Barnard

GREEN UP VERMONT

Thirty-three years strong, "Green Up Day" is a special day when Vermonters clean and spruce up their communities. We were the first state in our nation to designate a day for such cleaning of the entire state. Working together, we can keep our unique Green Up spirit growing for Vermont.

Green Up Vermont is the not-for-profit 501(C)(3) organization that promotes litter-free communities by supporting Green Up Day, civic pride and education.

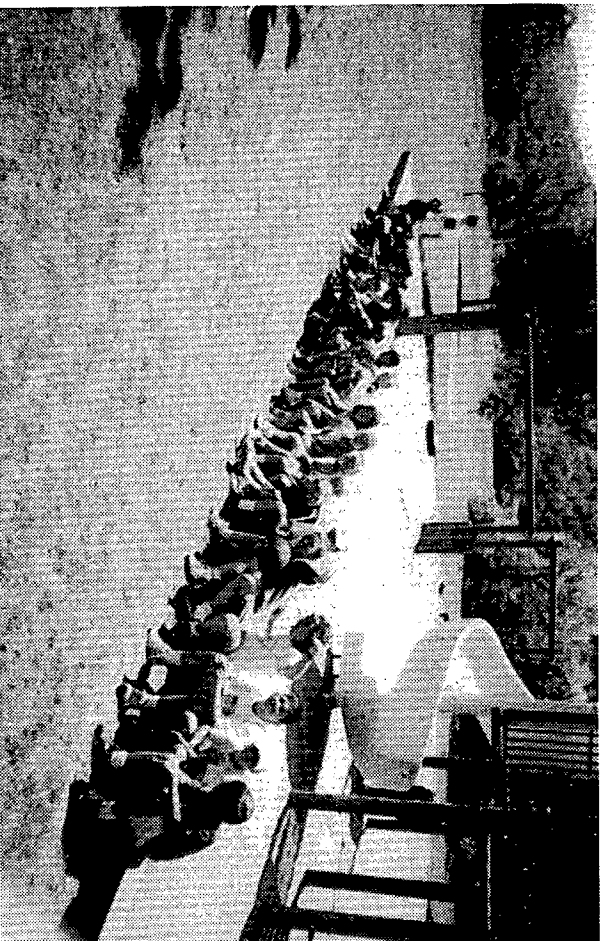
Over 13,000 Vermonters participated in Green Up Day 2003, using over 33,000 Green Up bags, collecting over 200 tons of trash, piles of mixed metals and tires. Green Up Vermont arranged widespread promotional support in excess of \$25,000.

The success of Green Up for Vermont depends upon two essential ingredients. One is the combined efforts of individuals and civic groups who volunteer to make it all possible; and two, the financial support given by the public and private sectors throughout Vermont.

With your town's help, we can continue our unique annual Vermont tradition of taking care of our beautiful landscape and promoting civic pride so our children group with Green Up.

Sincerely,

F. Sheldon Prentice
President



Some of the many kids who attended Camp Loads of Fun at the Johnson Recreation Area, summer 2003

RESULTS OF SHERBURNE SCHOOL MEETING

Tuesday, March 4, 2003

The meeting was called order at 9:00 a.m. by Moderator Horace "Red" Glaze. Approximately 60 people were in attendance.

ARTICLE 1. To elect a moderator.

Ken Keim nominated Horace "Red" Glaze. The nomination was seconded. A motion was made, seconded, and carried to cease nominations.

One ballot was cast for Horace "Red" Glaze as School District Moderator. Sworn in by Lucrecia Wonsor. The Pledge of Allegiance was recited.

ARTICLE 2. To act on reports submitted.

Craig Hogstrom moved to accept the reports as submitted. The motion was seconded.

Principal Marion Withum commented that the students of Sherburne Elementary continue to perform well, and in many cases above average, in comparison to students throughout the State of Vermont. With the use of grant monies, the school offered a summer session in 2002 which concentrated on helping students maintain skills. Seventeen students took advantage of this program. A computer lab was added and equipped with computers donated by the community. Each spring the Kindergarten has one full day of school per week and this will be increased to two full days next year. Due to the success of the Sherburne Education Foundation, the school has been able to maintain programs and move forward. She expressed her gratitude to the community for their generosity and support of the school.

Carried

ARTICLE 3.

To elect one School Director to the Sherburne Elementary School Board, for a Term of three years, who shall be elected by ballot.

Ken Keim nominated Stephen Finneron. The nomination was seconded. A motion was made, seconded and carried to cease nominations.

One ballot was cast for Stephen Finneron. Sworn in by Lucrecia Wonsor.

ARTICLE 4.

Shall the voters of the Sherburne School District appropriate \$1,268,905 (One Million Two Hundred Sixty-eight Thousand Nine Hundred Five Dollars as the amount necessary for the support of its school for the year beginning July 1, 2003?

George Krantz moved to approve the article and the motion was seconded.

Paul Buhler gave an explanation of the budget. He fielded questions regarding per student cost, the impact declining enrollment has had on the budget, the cost charged to tuition students, and whether the Board has considered the possibility of combining our resources with other schools. Marion Withum cautioned against comparing our per student cost to that set by the State. She pointed out that our cost includes expenses such as transportation and special education which are not in the figure set by the State. Both Paul Buhler and Marion Withum stressed that the focus of the School staff and the Board is to provide excellent education and they invited

and encouraged members of the community to attend School Board meetings. Charlie Wise reported that contributions to the Sherburne Education Foundation were on target. The Foundation anticipates committing \$460,000 to the School Board. M.B. Neisner noted that 15 of the condominium properties are now contributing 100% and 6 more have promised 100% participation. Only 70% of residents have contributed. On a whole contributions to the Foundation are 5% ahead of last year. Because of the Foundation's efforts, Killington has again avoided having to participate in the shark pool.

Carried

ARTICLE 5.

Shall the voters of the Sherburne School District reserve the amount of \$51,002.67 (Fifty-one Thousand Two Dollars and Sixty-seven Cents) (the unreserved fund balance at June 30, 2002) for the future tax reduction to be applied at the discretion of the School Board.

George Krantz moved to do so. The motion was seconded. Carried

ARTICLE 6. To conduct any other business that may properly come before the School District Meeting.

Paul Buhler recognized Stephen Finneron for his 12 years of service to the School Board. He presented Steve with a Certificate of Appreciation for his leadership as Chair.

The meeting was adjourned at 10:00 a.m.

RESULTS OF KILLINGTON TOWN MEETING

Tuesday, March 4, 2003

The meeting was called order at 10:10 a.m. by Moderator Horace "Red" Glaze. Approximately 100 people were in attendance.

Representative Harry Chen gave a brief update on issues being discussed in the Legislature. He explained the proposed Senate Bill H-187 to amend Act 60 as well as a concept that is being developed in the House Ways and Means Committee. Mr. Chen asked for feedback and fielded various questions from the floor.

ARTICLE 1. To elect a moderator.

Ken Keim nominated Horace "Red" Glaze. The motion was seconded. A motion was made, seconded and carried to cease nominations.

One ballot was cast for Horace "Red" Glaze for moderator. Sworn in by Lucrecia Wonsor.

ARTICLE 2. To act on the reports of the Town Officers for the year ended December 31, 2002.

Craig Hogstrom moved to accept the reports. The motion was seconded. Mike Miller read a letter from Secretary of State, Deb Markowitz to the Town of Killington in tribute to Judy Hansen. John Hansen expressed his thanks to the community for all their support during this difficult time.

David Lewis noted that there is an insert correcting pages 82 and 83 of the Town Report. He also advised that an outside audit for Fiscal Year 2002 will be

done this April or May. This is a requirement of the Vermont Bond Bank in order to sell bonds for the Town Garage.
Carried

ARTICLE 3. To elect the following Town Officers and fill any vacant office:

- a. **A Town Clerk for a term of two years who shall be elected by ballot.**
Steve Finer nominated Lucrecia Wonsor. The nomination was seconded. A motion was made, seconded and carried to cease nominations. One ballot was cast for Lucrecia Wonsor. Sworn in by Howie Zack.
- b. **One Selectman for a term of three years who shall be elected by ballot.**
M.B. Neisner nominated Norman Holcomb. The nomination was seconded. A motion was made, seconded and carried to cease nominations. One ballot was cast for Norman Holcomb. Sworn in by Lucrecia Wonsor.
- c. **One Lister for a term of three years who shall be elected by ballot.**
Charlie Wise nominated Sarah Bridges. The nomination was seconded. A motion was made, seconded and carried to cease nominations. One ballot was cast for Sarah Bridges. Sworn in by Lucrecia Wonsor.
- d. **One Auditor for a term of three years who shall be elected by ballot.**
Greg Becker nominated William Ehnann. The nomination was seconded. A motion was made, seconded and carried to cease nominations. One ballot was cast for William Ehnann. Sworn in by Lucrecia Wonsor.
- e. **A First Constable for a term of two years.**
Paul Stiles nominated Scott Bigelow. The nomination was seconded. A motion was made, seconded and carried to cease nominations. One ballot was cast for Scott Bigelow. Sworn in by Lucrecia Wonsor.
- f. **A Grand Juror.**
Ken Keim nominated Horace "Red" Glaze. The nomination was seconded. Howie Zack nominated Craig Hogstrom. The nomination was seconded. "Red" Glaze chose to withdraw. A motion was made, seconded and carried to cease nominations. One ballot was cast for Craig Hogstrom. Sworn in by Lucrecia Wonsor.
- g. **A Town Agent.**
David Rosenblum nominated Ken Keim. The nomination was seconded. A motion was made, seconded and carried to cease nominations. One ballot was cast for Ken Keim. Sworn in by Lucrecia Wonsor.
- h. **One Trustee of Public Funds for a term of three years.**
Ken Keim nominated Truman Bates. The nomination was seconded. A motion was made, seconded and carried to cease nominations. One ballot was cast for Truman Bates. Sworn in by Lucrecia Wonsor.
- i. **One Cemetery Commissioner for a term of three years.**
Sally Bridges nominated Lynn Bates. The nomination was seconded.

A motion was made, seconded and carried to cease nominations.

One ballot was cast for Lynn Bates. Sworn in by Lucretia Wonsor.

j. **One Library Trustee for a term of five years.**

Timmie Rome nominated Richard Matteson. The nomination was seconded. A motion was made, seconded and carried to cease nominations.

One ballot was cast for Richard Matteson. Sworn in by Lucretia Wonsor.

ARTICLE 4.

To see if the Town will have property taxes paid as voted last year, being in two installments, the first due July 1 and overdue and subject to interest July 11, the second due November 1, with the total tax to be delinquent November 11.

Ken Keim moved to have property taxes paid as voted last year. The motion was seconded. Carried

ARTICLE 5.

To see if the Town will direct the Selectmen to set wages as in the past.

Ken Keim moved to do so. The motioned was seconded. Carried

ARTICLE 6.

To see if the Town will raise money by taxation on the Grand List and to authorize the Selectmen to borrow money to pay current Town expenses.

Ken Keim moved to do so. The motioned was seconded. Carried

ARTICLE 7.

To see if the Town will use the funds received from the sale of the Spaulding lot and house to reduce the amount to be bonded for the new Town Garage if the house is sold prior to the Garage Bond sale.

Ken Keim moved to do so. The motioned was seconded. David Lewis advised that the house was sold for \$144,000 and the Town expects to net approximately \$130,000 after all expenses are paid. Art LaMontagne inquired whether the monies could be used to continue the Killingtton Road Walkway. David responded that there is enough money in the Restricted Fund for the Walkway project. The Selectmen have recently decided to put the Walkway project back on the agenda for possible 2003 construction.

Carried

ARTICLE 8.

To see if the Town will adopt the recommended 2003 operating budget of \$2,449,300 which will be reduced by \$535,000 in 2003 estimated non-tax revenues and \$65,000 in Excess Cash on Hand of the December 31, 2002, General Fund balance, as proposed by the Selectmen in the Town Report.

Ken Keim moved to do so. The motioned was seconded. David Lewis, gave an overview of the budget as presented. Overall, the budget is up by 2% and no Town tax rate increase is anticipated.

Ray Foley questioned the source of revenue in the Recreation Department Budget. Upon hearing David Lewis' response, he commended the Recreation Department and Commission on their financial contribution to the Town.

Carried

ARTICLE 9. To transact any other business properly to be brought before said meeting.

David Lewis advised that the Recreation Department will be holding a public hearing on March 31, 2003 at 7:00 p.m. at the Sherburne Memorial Library to give residents the opportunity to learn about and comment on the Recreation Department's development plans for the parcels the Town has under option to purchase.

Recreation Department Director, Michael Coppinger, presented the Ken Krantz Volunteer of the Year Award to Paul Buhler. Michael also presented Diane Miller with a gift in appreciation for her years of service on the Recreation and Parks Commission.

Fire Chief, Steve Finer, noted that Killington, Ltd. has made its last payment on the tower truck. He expressed his thanks to Killington, Ltd. for its support of the Fire Department over the years.

Several announcements were made.

The meeting was adjourned at 12:10 p.m.

Respectfully submitted,
Lucretia Wonsor, Town Clerk

**RESULTS OF SPECIAL SCHOOL DISTRICT MEETING
Tuesday, April 22, 2003**

The meeting was called order at 4:00 p.m. by Stephen Finneron.

ARTICLE 1. To elect one School Director to the Woodstock Union High School Board, for a Term of three years, who shall be elected by ballot.

Marcia Foley nominated Marianne McGee. The nomination was seconded. A motion was made, seconded and carried to cease nominations.

One ballot was cast for Marianne McGee. Sworn in by Lucretia Wonsor.

The meeting was adjourned at 4:02 p.m.

WARNING FOR TOWN MEETING

TUESDAY, MARCH 2, 2004

THE LEGAL VOTERS OF THE TOWN OF KILLINGTON IN THE COUNTY OF RUTLAND AND STATE OF VERMONT ARE HEREBY NOTIFIED AND WARNED TO MEET AT THE SHERBURNE ELEMENTARY SCHOOL ON TUESDAY, MARCH 2, 2004, AT 10:00 O'CLOCK IN THE FORENOON TO TRANSACT THE FOLLOWING BUSINESS:

ARTICLE 1.

To elect a moderator.

ARTICLE 2.

To act on the reports of the Town Officers for the year ended December 31, 2003.

ARTICLE 3.

WHEREAS, Chapter 1, Article 4th of the Vermont Constitution provides that "every person within this state ought to find a certain remedy, by having recourse to the laws, for all injuries or wrongs which one may receive", and

WHEREAS, Chapter 1, Article 9th of the Vermont Constitution provides that "previous to any law being made to raise a tax, the purpose for which it is to be raised ought to appear evident to the Legislature to be of more service to the community than the money would be if not collected", and

WHEREAS, the Vermont Legislature, in 1997, adopted Act 60, so called, under which the Town has been required to raise more money than has been necessary for the good of the community, using a state taxing scheme which the Rutland Superior Court found to be arbitrary and capricious, an abuse of the state's discretion, and results in disproportionate and inequitable taxation, and

WHEREAS, on an appeal of that decision, the Vermont Supreme Court provided, in effect, that neither the Town nor its inhabitants would ever have any meaningful recourse to the laws in order to remedy the injustices visited upon them by the state, acting through its tax department, in the administration of Act 60, and

WHEREAS, this same Supreme Court decision employed a standard which renders it virtually impossible for either the Town or its inhabitants, in seeking review of the actions of state officials, ever to have meaningful recourse to the laws for any injuries or wrongs visited upon them by the state, and

WHEREAS, Chapter 1, Article 7th of the Vermont Constitution provides that the community has "an indubitable, unalienable, and infeasible right, to reform or alter government, in such manner as shall be, by that community, judged most conducive to the public weal", and

WHEREAS, the Town having no recourse under the laws of this state for the injustices visited upon it, believes it must avail itself of its rights under Chapter 1, Article 7th of the Vermont Constitution to alter its form of government, and

WHEREAS, the Town was originally chartered in 1761 as a township of what was then known as the Province of New Hampshire, and

WHEREAS, the Town believes that, in light of the injustices visited upon it, the public good of the Town and its inhabitants would best be served if the Town were again to become a part of the State of New Hampshire.

NOW THEREFORE, it is hereby resolved as follows:

RESOLVED, that the Killington Selectboard is authorized to petition the proper officials of the State of New Hampshire that the Town of Killington become a municipality of the State of New Hampshire, and

RESOLVED, that in the event such petition receives favorable consideration, the Killington Selectboard is authorized to file such further petitions with governmental authorities, including, but not limited to, the Vermont Legislature and the Congress of the United States, and to take such further actions as may be necessary, so that the Town of Killington may become a municipality of the State of New Hampshire.

ARTICLE 4.

To see if the Town will hold its annual Town and School Meeting at 6:00 p.m. on the Monday preceding the first Tuesday in March.

ADJOURN TO SCHOOL MEETING

ARTICLE 5.

To elect the following Town Officers and fill any vacant office:

- a. A Town Treasurer for a term of two years who shall be elected by ballot;
- b. One Selectman for a term of three years who shall be elected by ballot;
- c. One Lister for a term of three years who shall be elected by ballot;
- d. One Auditor for a term of three years who shall be elected by ballot;
- e. A Second Constable for a term of two years;
- f. A Grand Juror;
- g. A Town Agent;
- h. One Trustee of Public Funds for a term of three years;
- i. One Cemetery Commissioner for a term of three years;
- j. One Library Trustee for a term of five years.

ARTICLE 6.

To see if the Town will have property taxes paid as voted last year, being in two installments, the first due August 1 and overdue and subject to interest August 11, the second due November 1, with the total tax to be delinquent November 11.

ARTICLE 7.

To see if the Town will direct the Selectmen to set wages as in the past.

ARTICLE 8.

To see if the Town will raise money by taxation on the Grand List and to authorize the Selectmen to borrow money to pay current Town expenses.

ARTICLE 9.

To see if the Town will authorize the Selectmen to borrow money to cover the Actual 2003 and the anticipated 2004 year-end Golf Accounts deficits as shown on page 49 of the Town Report.

ARTICLE 10.

To see if the Town will, pursuant to 24 V.S.A. §2804, establish the Reserve Funds as shown on page 7 of the Town Report and to authorize the Selectmen to use these funds for the purposes for which each was established

ARTICLE 11.

To see if the Town will authorize the Selectmen to spend unanticipated funds, such as grants and gifts, for the purposes for which these grants and gifts were intended.

ARTICLE 12.


To see if the Town will adopt the recommended 2004 operating budget of \$2,484,800 which will be reduced by \$545,000 in 2004 estimated non-tax revenues and \$70,000 in Excess Cash on Hand of the December 31, 2003, General Fund balance, as proposed by the Selectmen in the Town Report.

ARTICLE 13.

To transact any other business properly to be brought before said meeting.



Walter J. Findeisen



Michael E. Miller



Norman C. Holcomb
BOARD OF SELECTMEN

January 26, 2004

WARNING FOR SCHOOL DISTRICT MEETING TUESDAY, MARCH 2, 2004

THE LEGAL VOTERS OF THE SHERBURNE SCHOOL DISTRICT ARE HEREBY NOTIFIED AND WARNED TO MEET AT THE SHERBURNE ELEMENTARY SCHOOL ON TUESDAY, MARCH 2, 2004, AT 10:00 O'CLOCK IN THE FORENOON TO TRANSACT THE FOLLOWING BUSINESS:

ARTICLE 1.

To elect a moderator.

ARTICLE 2.

To act on the reports submitted.

ARTICLE 3.

To elect one School Director to the Sherburne Elementary School Board for a term of three years, who shall be elected by ballot.

ARTICLE 4.

To elect one School Director to the Sherburne Elementary School Board for the remaining one year of a three year term, who shall be elected by ballot.

ARTICLE 5.

To elect one School Director to the Woodstock Union High School Board for a term of three years, who shall be elected by ballot.

ARTICLE 6.

Shall the voters of the Sherburne School District appropriate \$1,234,191 (One Million Two Hundred Thirty-four Thousand One Hundred Ninety-one Dollars) as the amount necessary for the support of its school for the year beginning July 1, 2004?

ARTICLE 7.

Shall the voters of the Sherburne School District appropriate an amount not to exceed \$60,000 for roof repairs/replacement.

ARTICLE 8.

To do any other business which may legally come before the meeting.


Stephen Finneron


Charles Wise


Diane Miller
SHERBURNE SCHOOL BOARD

January 26, 2004

2003 APPOINTED OFFICERS

ASSISTANT TOWN CLERK
Helga Cognato

ASSISTANT TOWN TREASURER
Lucrecia Wonsor

TOWN MGR. & TAX COLLECTOR
David Lewis

TOWN PLANNER & ZONING ADM.
Richard Homer

PLANNING COMMISSION
Walter Linnemayr 2004
David Rosenblum 2005
Ted Olencski 2005
Ken Lee 2006
Mark Werle 2006
Ken Austin 2007
Howard Barbash 2007

ZONING BOARD OF ADJUSTMENT
Steven Foley 2004
Howard Zack 2004
Richard Godfrey 2004
Mary Furlong 2005
Steve Malone 2005
Carol Ehmann 2006
Ron Riquier 2006
ALTERNATES:
Peter Lynch
Louis Grob

DIRECTOR OF RECREATION
Michael Coppinger

RECREATION COMMISSION
James Blackman 2004
Patty McGrath 2004
Michael Young 2005
Leslie Guth 2005
Pat Cushing 2006

**RUTLAND REGION
TRANSPORTATION COUNCIL**
Bob Wolven 2004

TOWN SERVICE OFFICER
Debbie Burke 2004

HEALTH OFFICER
M. B. Neisner, Jr. 2005

RUTLAND REG. AMBULANCE SVC.
Peggy Pelletier 2004

RUTLAND REG. PLANNING COMM.
David Rosenblum 2004

RUTLAND COUNTY SOLID WASTE
Ken Lee 2004

ENERGY COORDINATOR
Kenneth Keim 2004

FENCE VIEWERS
Truman Bates 2004
Louis Grob 2004
Kenneth Keim 2004

INSP. OF LUMBER/SHINGLES/WOOD
Truman Bates 2004
William Ehmann 2004
Scott Bigelow 2004

TREE WARDEN
William Ehmann 2004

WEIGHERS OF THE COAL
Truman Bates 2004
William Ehmann 2004
Kenneth Keim 2004

TOWN FOREST FIRE WARDEN
David Gouchberg 2004

ASSISTANT FOREST FIRE WARDEN
Patrick McDonnell

SPECIAL POLICE OFFICER
Howard Zack 2004
Timothy Gibbard 2004

2003 ELECTED OFFICERS

MODERATOR				
Horace "Red" Glaze	2004	CEMETERY COMMISSIONERS		
		Louis Grob	2004	
TOWN CLERK		Truman Bates	2005	
Lucrecia Wonsor	2005	Lynn Bates	2006	
TOWN TREASURER				
Patricia Keim	2004	LIBRARY TRUSTEES		
		Diane Rosenblum	2004	
SELECTMEN		Mary Hogstrom	2005	
Walter J. Findelsen	2004	Joan Wise	2006	
Michael Miller	2005	Timmie Rome	2007	
Norman Holcomb	2006	Richard Matteson	2008	
LISTERS		SCHOOL DIRECTORS		
J. Pat Whelan	2004	Diane Miller	2004	
Patricia Linnemayr	2005	Charles Wise	2004	
Sarah Bridges	2006	Stephen Finnern	2006	
AUDITORS		WOODSTOCK UNION HIGH SCHOOL DISTRICT 4 REPRESENTATIVES		
Gregory Becker	2004	Marcia Foley	2004	
Ron Riquier	2005	Marianne McGee	2006	
William Ehmann	2006			
FIRST CONSTABLE		* JUSTICES OF THE PEACE		
Scott Bigelow	2005	Theodore Bridges	2004	
		William Ehmann	2004	
SECOND CONSTABLE		Judy Findelsen	2004	
Robert W. Montgomery	2004	M.B. Neisner, Jr.	2004	
		Howard Zack	2004	
GRAND JUROR		* All justices serve as members of the Board of Civil Authority and the Board of Abatement.		
Craig Hogstrom	2004			
TOWN AGENT		STATE REPRESENTATIVE, RUTLAND 3		
Kenneth Keim	2004			
TRUSTEES OF PUBLIC FUNDS				
George J. Krantz	2004	Harry Chen	2004	
Howard Zack	2005			
Truman Bates	2006			

INDEX

Auditors' Opinion	2
Budget - Town General Fund	18
Budget - School District	32
COMMUNITY AND COUNTY REPORTS	
Ambulance Service	66
ARC - Rutland Area	68
Arts Guild	61
Chateaugay No Town	75
Coalition of Municipalities	72
Council on Aging	67
Fire Warden	59
Friends of the Library	60
Green-Up Vermont	76
Health Department	74
Historians	62
League of Cities & Towns	71
Regional Planning Commission	65
RSVP Program	69
Rutland Mental Health Services	63
Solid Waste District	70
Transportation Council	71
Visiting Nurses, Rutland VNA & Hospice	64
Dedication	3
OTHER GOVERNMENTAL REPORTS	
Cemetery	44
Fire Department	39
Golf Course	52
Inventory	56
Library	41
Planning Commission	45
Recreation Commission	43
Town Clerk: Births, Deaths, Licenses, Marriages	47
Trustees of Public Funds	46
Zoning Activity	46
Results of 2003 Town, School, & Special Meetings	77
SCHOOL REPORTS	
Balance Sheet	36
Director's Report	29
Estimated Receipts & Budget	31, 32
Elementary School Salaries	37
Principal's Report	27
Treasurer's Report	30
Town Information - Miscellaneous	
Town Officers, Appointed and Elected, 2003	Inside Back Cover
TOWN REPORTS	86, 87
Actual and Estimated Revenue & Receipts	17
Bonded Debt	7
Budget	18
Budget Summary & Anticipated 2004 Tax Rate	25
Delinquent Property Taxes & Delinquent Tax Statement	12
Explanation of 2003 Grand List, Statement of Current Taxes	11
Gross Wages	15
Town Manager's Report	4
Treasurer's Reports	8
Warnings for 2004 School and Town Meetings	82-85

TOWN PHONE NUMBERS

EMERGENCY PHONE

911

TO CALL THE STATE POLICE

773-9101

AMBULANCE

773-1700

TOWN MANAGER'S OFFICE

422-3241

TOWN PLANNER & ZONING ADMINISTRATOR

422-3242

TOWN CLERK

422-3243

TOWN OFFICE FAX

422-3030

TOWN RECREATION DEPARTMENT

422-3932

FIRST CONSTABLE

422-3935

SECOND CONSTABLE

422-5091

SPECIAL OFFICER

422-3825

SHERBURNE LIBRARY

422-9765

422-4251

FAX 422-4323

GREEN MOUNTAIN NATIONAL GOLF COURSE

422-GOLF

SHERBURNE ELEMENTARY SCHOOL

422-3366

KILLINGTON POST OFFICE

775-4247

FIRE WARDEN

422-3760

422-2773

TRANSFER STATION

APRIL - OCTOBER: SATURDAY & MONDAY

8 a.m. to 2 p.m.

NOVEMBER - MARCH: SATURDAY & MONDAY
SUNDAY

8 a.m. to 4 p.m.
8 a.m. to noon

TOWN CALENDAR

BOARD OF SELECTMEN:

Mondays as posted, 7:30 p.m.

TOWN CLERK:

Monday thru Friday, 9 a.m. to 3 p.m.

PLANNING COMMISSION:

Wednesdays as posted, 7:30 p.m.

RECREATION COMMISSION:

Mondays as posted, 7:00 p.m.

SCHOOL BOARD:

2nd Tuesdays, S.E.S., time as posted

LIBRARY:

Monday

10 to 5:30

Thursday 1 to 5:30

Tuesday

1 to 5:30

Friday

10 to 5:30

Wednesday

10 to 8:00

Saturday 9 to 1:00

TOWN OF KILLINGTON, VT
P.O. BOX 429
KILLINGTON, VT 05751

PRSRT STD
U.S. POSTAGE
PAID
Permit No. 1
Killington, VT
05751

State Library
State of Vermont
Montpelier, VT 05602

PLEASE BRING THIS TOWN REPORT WITH YOU TO TOWN MEETING.