



# ORTHOPHOTOGRAPHY ACQUISITION

2/18/2022

John E. Adams, VCGI Director

Agency of Digital Services

Senate Committee on Corrections & Institutions

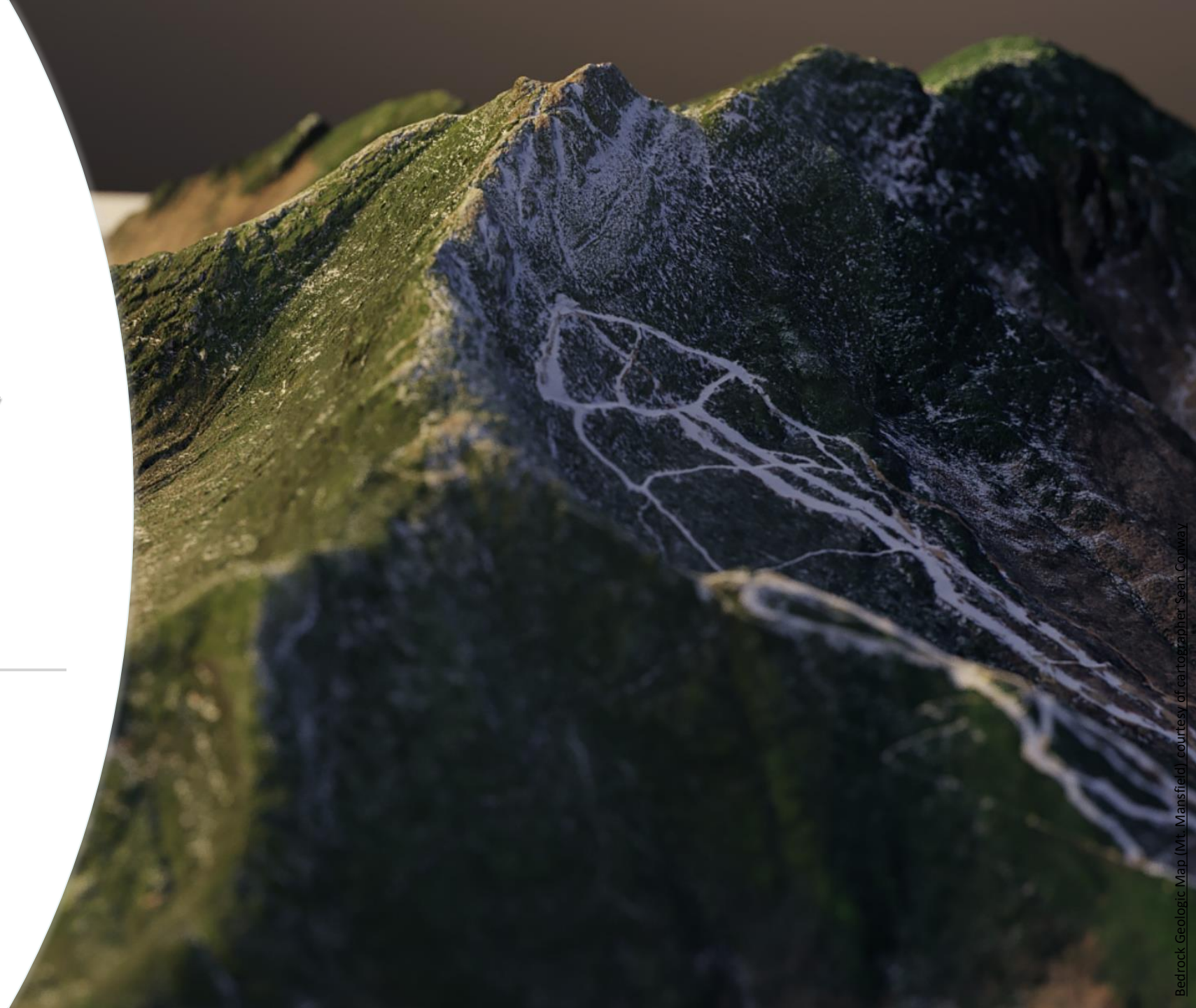
---



VERMONT CENTER FOR GEOGRAPHIC INFORMATION



VERMONT CENTER FOR GEOGRAPHIC INFORMATION







## Orthophotographic Imagery

An orthophoto is an aerial photograph or geometrically corrected ("orthorectified") such that the scale is uniform: the photo or image follows a given map projection. Unlike an uncorrected aerial photograph, an orthophoto can be used to measure true distances, because it is an accurate representation of the Earth's surface, having been adjusted for topographic relief, lens distortion, and camera tilt.





# Orthophotographic Imagery

## 2021-2025 ACQUISITION PLAN

- Annual request of \$125k

## SPECIFICATIONS

- Color and Infrared
- Leaf-Off, No Snow, No Clouds
- Accuracy within 73.4cm meeting NSSDA accuracy
- 30cm resolution (15cm targeted area)
- Independent QA/QC

# History of Orthophotos in Vermont

**1974**  
Orthophotographs



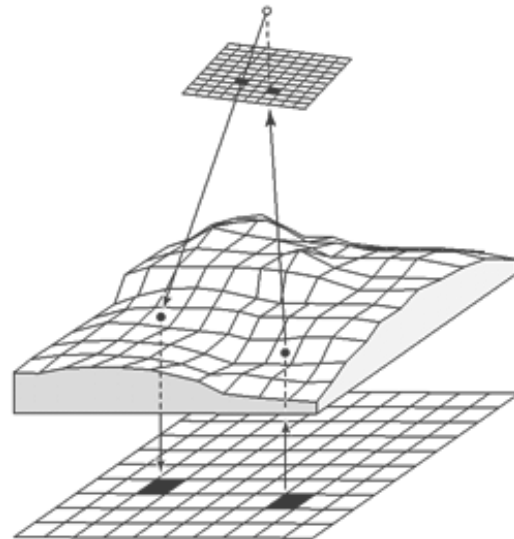
Figure 2 - Color Infrared showing bare earth

**2016**  
VCGI Officially  
takes over duties  
from Tax Dept

**2011**  
Color Infrared

**1994**  
Digital  
Orthophotos

**1968**  
Vermont Mapping  
Program

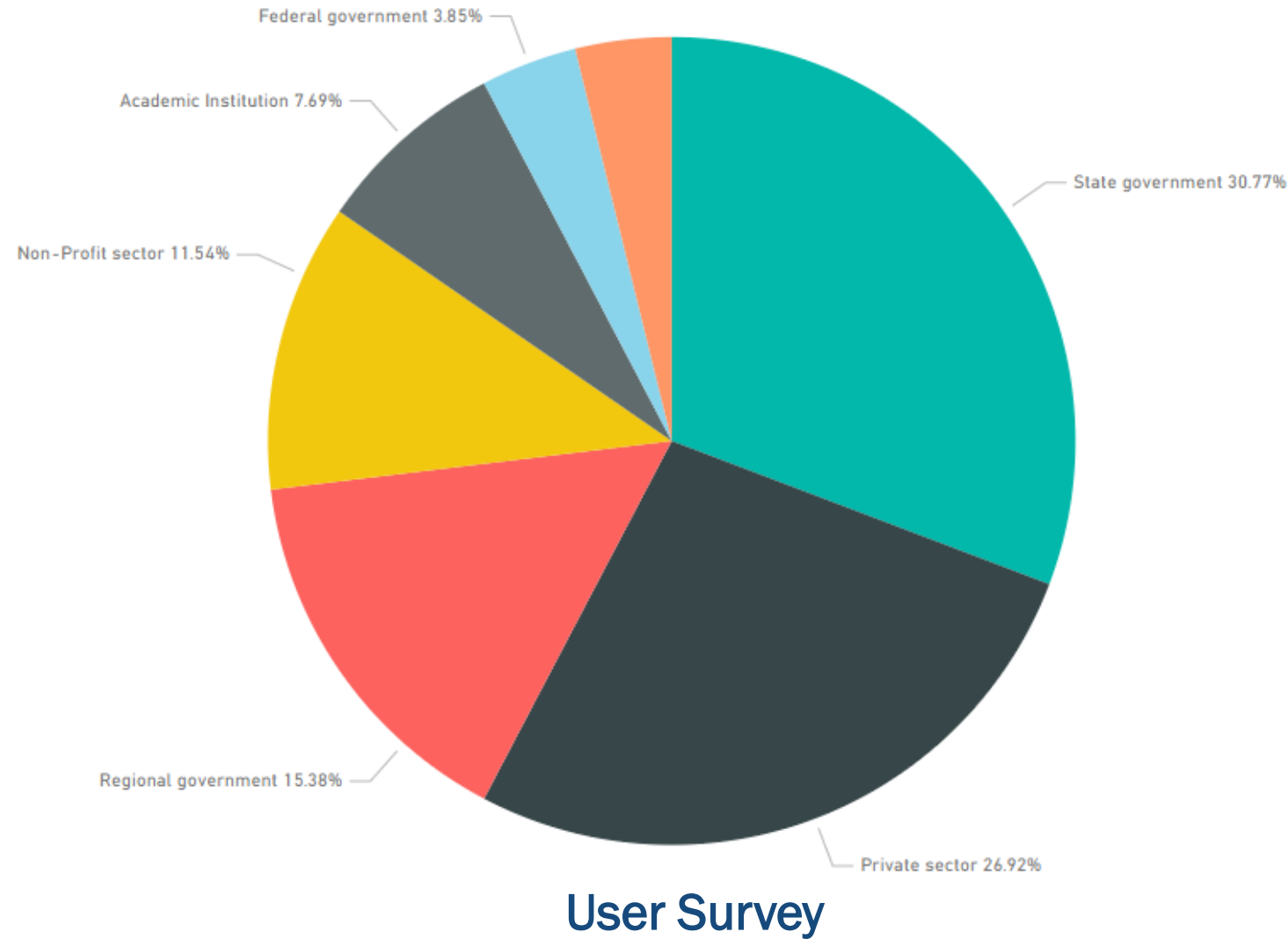




# Orthophotography Workgroup

## Members

- Steve Sharp - VCGI
- Erik Engstrom - ANR
- Johnathan Croft + Brad Herring - VTrans
- Jeremy McMullen + Tyler Hermanson - E911
- Pam Brangan - VADPA/Regional Planning Commissions
- Jarlath O'Neil-Dunne (UVM)
- Bill Hegman (Middlebury)
- Mark Day – Vermont Society of Land Surveyors

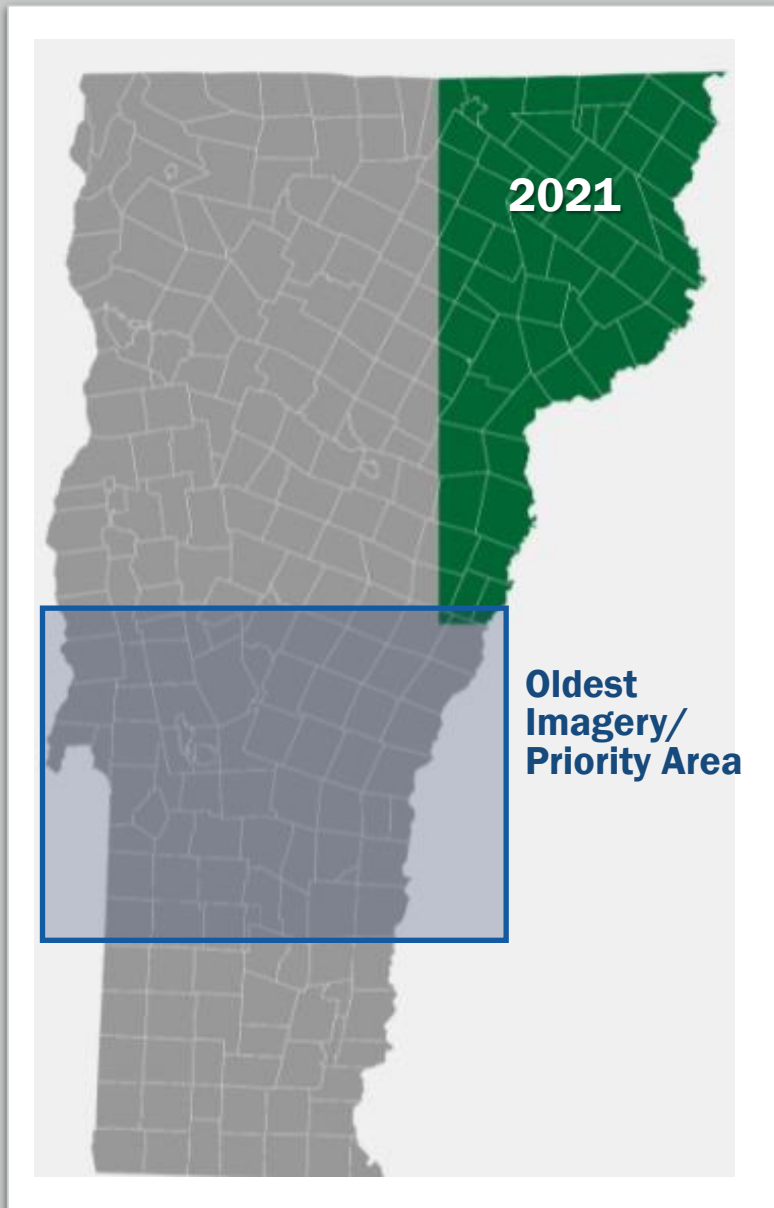




50cm resolution



15cm resolution



## 2021 Acquisition

2022?

Weather and ground conditions (snow/leaf-out/flooding) will determine what we can collect.

# Availability and Users

## AVAILABILITY

- Free for use by all (including commercial uses)
- Imagery available for download & web service
- Uncompressed available on hard drives

## USERS

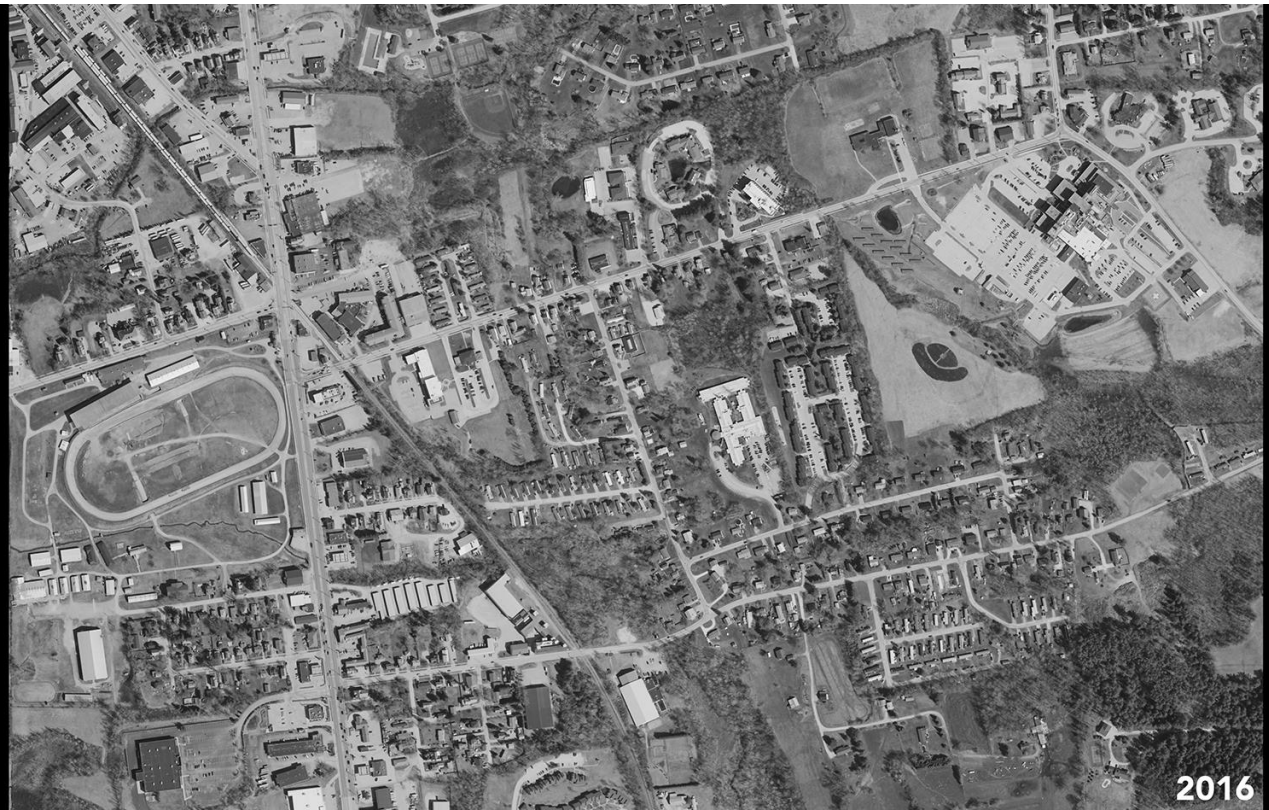
- State Agencies (AOT, DPS, Tax, ANR, AHS, E911, PSD, ACCD)
- Municipalities, RPCs and Federal Agencies
- Academia
- Private Sector (Engineers, Surveyors, Foresters, Attorneys, Landscape Architects Ecologists, and many more. )



[Download Imagery](#)



# Historic Imagery



[Learn more & access 1962 imagery](#)





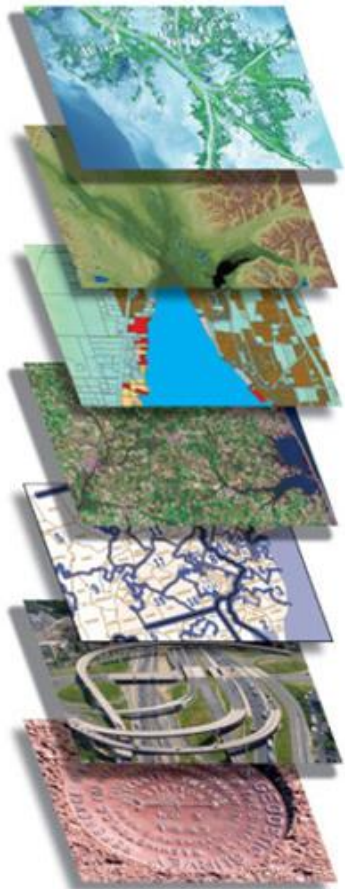
# Historic Imagery

VCGI is working with VTrans and VSARA to scan historic aerial photos. The focus is currently on holdings held by VTrans, which includes statewide 1:20,000 scale photos from 1974. Work on this project is planned for this summer.





# Spatial Data Infrastructure



Elevation

Governmental Units

Cadastral (Parcels)

Land Cover

E911 Addresses

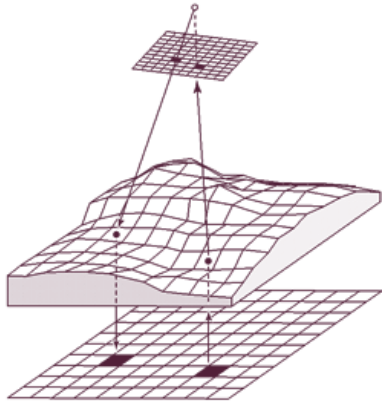
Transportation

Hydrography

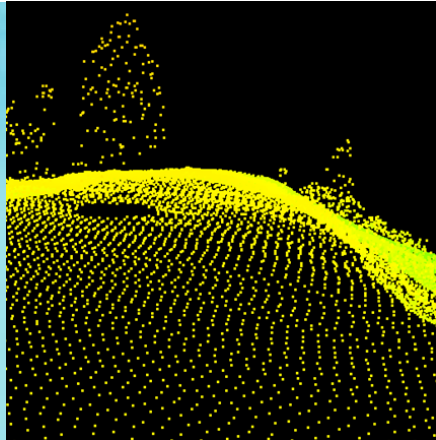
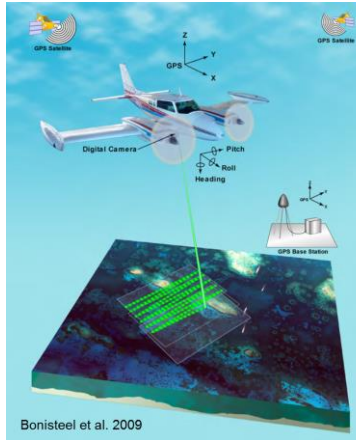
**Orthophotography**



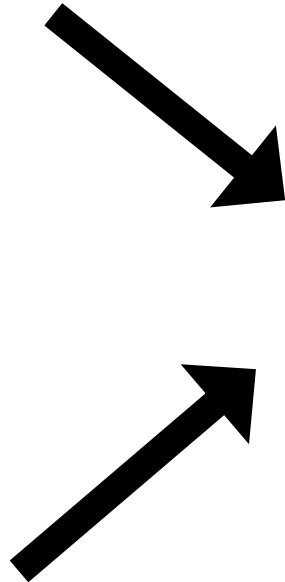




ORTHOIMAGERY

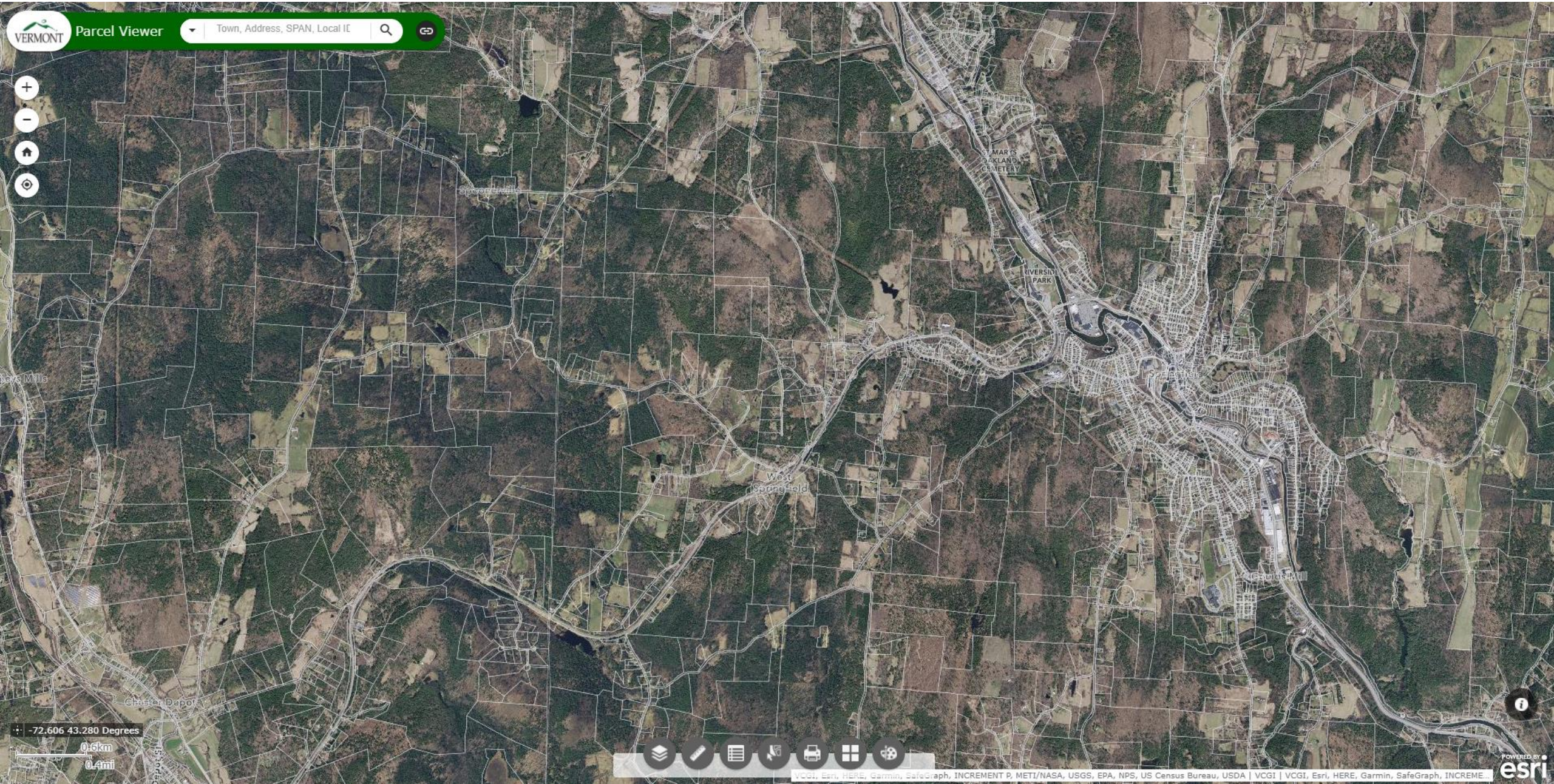


LIDAR





Access Parcel Viewer with Orthoimagery (zoom in to see imagery)





## COVID-19: RESOURCES FOR TAXPAYERS

[Home](#)

[COVID-19 Resources](#)

**Individuals**

[Forms & Instructions](#)

[Check My Refund Status](#)

[Who Needs to File?](#)

[Types of Filers](#)

[Filing Season Updates](#)

[How to File](#)

[Free File](#)

[Free Tax Preparation Assistance](#)

[File an Extension](#)

[Paying Tax Owed](#)

## School Property Account Number (SPAN) Finder

1 BALDWIN ST, MONTPELIER, VT, 05602



Results: 1

Multiple results may appear below, particularly for condominium properties. If this is the case, please review the list and identify your particular unit. Please contact your landlord if you can't find your unit.

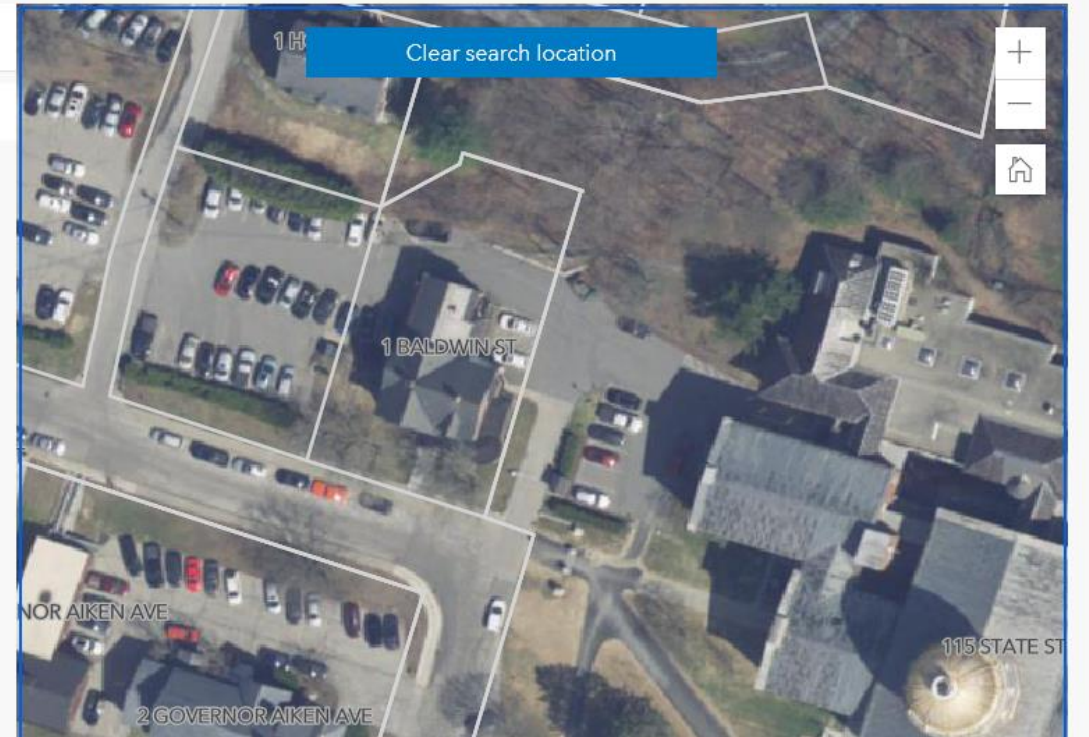
Property Information

1

**1 BALDWIN ST, MONTPELIER**

**SPAN: 405-126-13202**

DESCRIPTION: 0.27 AC & OFFICE BLDG





# Learn More

- [2021 GIS Year in Review](#)
- [Interactive Map Viewer](#)
- [Tax Parcel Data Viewer](#)
- [Census: High Cost of a Low Count](#)
- [Historic Imagery](#)
- [Download Imagery](#)
- [vcgi.vermont.gov](http://vcgi.vermont.gov)

[john.e.adams@vermont.gov](mailto:john.e.adams@vermont.gov)

